



**2004-07 GM Silverado/Sierra 1500 V8, 4.8/5.3L
BlackHeart Cat-back Exhaust System, 409SS
705014160RHKR
Installation Instructions**

***2004-07 FITS ALL CREW CABS & EXT. CAB w/ 6.6 FT. BED (143 WB)
*2004-07 FITS CREW CAB w/ 5.75 FT. BED AND EXT. CAB w/ 6.6 FT. BED (143 WB)**

THIS KIT IS DESIGNED TO FIT WITH THE OE HIDDEN HITCH. IT MAY NOT FIT AFTERMARKET HITCHES!!!!



Thank you for making HOOKER HEADERS your choice in a high-performance exhaust system. Extensive dyno/track testing has enabled HOOKER to offer the most advanced design in exhaust systems. The installation, while not complex, will take a certain amount of time. However, the additional horsepower and improved performance will more than justify your efforts. Proper installation and maintenance will ensure long life and maximum performance from your HOOKER HEADER exhaust system.

BEFORE STARTING:

Your vehicle must be raised a minimum of 36 inches. A floor hoist is ideal. If no hoist is available, we strongly urge the use of axle stands as a safety measure. Please read these instructions in their entirety before attempting installation.

CAUTION! WORK ONLY ON A LEVEL SURFACE. USE JACKS /JACKSTANDS OF SUFFICIENT CAPACITY TO LIFT AND SUPPORT YOUR VEHICLE. NEVER WORK UNDER A VEHICLE SUPPORTED BY A FLOOR OR BUMPER JACK.

INCLUDED HARDWARE:

P/N	Qty.	Description
556R22	4	Band Clamp, 2.5" x 1.25" Wide, 4.0 SS Torca
556R23	1	Band Clamp, 3.0" x 1.25" Wide, 4.0 SS Torca
505R60	2	10mm x 1.5mm x 55mm Bolt
539R25	2	10mm x 1.5mm Nut
516R77	1	1/2" 2-Hole Rubber Isolator
516R216DW	1	Assembly, Bracket Hanger
599R94	2	Decal - Blackheart 4" x 2"

INSTALLATION:

1. Disconnect the negative cable from the vehicle battery.
2. If necessary, lift the vehicle and secure on jack stands.
3. Remove the (x2) nuts securing the OE exhaust system to the OE Y-pipe.

4. Remove the OE exhaust off all rubber isolators and remove OE exhaust.
5. Drive out the (x2) studs in the OE Y-pipe flange where the exhaust system connects.
6. Remove (x2) 21mm nuts securing the left side hitch and install the supplied hanger bracket using the original 21mm nuts and tighten. **NOTE:** The hanger rod should be pointing away from the spare tire. Slide the supplied rubber isolation mount on the supplied hanger bracket.

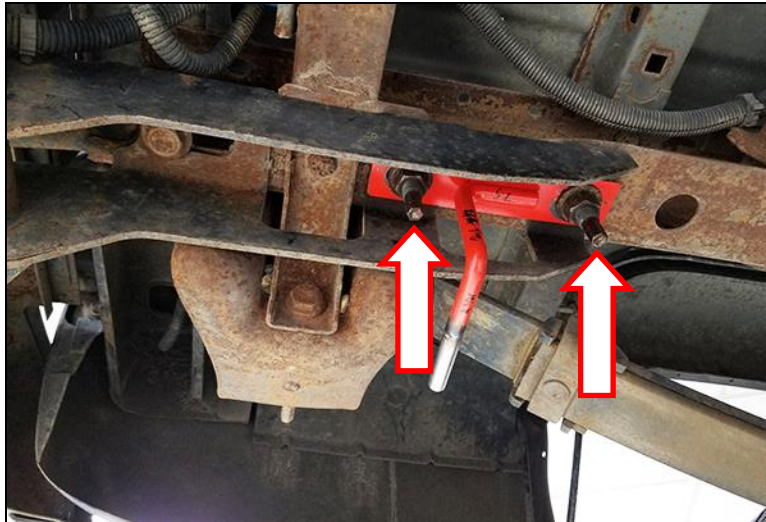


Figure 1

7. Using (x2) supplied 55mm bolts and (x2) nuts, install the BlackHeart Mid Pipe with floating flange to the OE Y-pipe and secure through the rubber isolation mount. Lightly tighten bolts at this time.
8. Using (x1) supplied 3.0" band clamp, install the BlackHeart Muffler Assembly over the BlackHeart Mid Pipe. Do not tighten the band clamp.
9. Using (x2) supplied 2.5" band clamps, install the left (secure through rubber isolation mount) and right side BlackHeart Over-Axle Pipes to the muffler assembly, but do not tighten the band clamps.
10. Using (x2) supplied 2.5" band clamps, install the left and right side BlackHeart Tailpipes over the over-axle pipes, but do not tighten the band clamps. Secure the left side to the supplied rubber isolator and the right side tailpipe to the chassis using the original rubber isolator.
11. Align the BlackHeart Exhaust System and tighten all clamps from steps 8, 9, and 10, along with nuts and bolts from step 7.

NOTE: Exhaust system hangers should be level where they pass through the rubber isolators when system is aligned properly.

12. Connect the battery, start the engine, and check for leaks.
13. Re-check your work.
14. Remove the jack stands and lower the vehicle.
15. After 150 miles, re-check and tighten all bolts.

NOTE: It is normal for the Blackheart Exhaust System to emit smoke for the first few minutes during break-in period.