



Installation Instructions
717947
 1994-02 RAM 1500/2500/3500
 3.9L, 5.2L & 5.9L ENGINE
 2/4 Wheel Drive & All Wheelbases

OVERVIEW:

1. Take a moment to read and understand these instructions before installing your Flowmaster performance system.

NOTE: Please inventory all parts now before continuing and if necessary, report any missing items to our tech line. This will avoid potentially stranding your vehicle until any missing replacement parts arrive.

ITM #	PART #	DESCRIPTION	QTY.
N/A	PK1046	Hardware Package includes:	1
7	522HA	Front Clamp Hanger	1
8	523HA	Rear Clamp Hanger	1
9	465HA	Front Clamp Hanger	1
10	208HA	Rear Hanger	1
11	MC300BS	3" Stainless Band Clamp	2
12	MC250BS	2½" Stainless Band Clamp	2
13	HA168	Red Rubber Hanger	1
14	HW204	¼"-18 x 1 Bolt	1
15	HW102	¼"-18 Nut	1
16	HW308	¼" Lock Washer	1
17	HW202	¼"-20 x 1 Bolt	1
18	HW306	¼" Split Lock Washer	1
19	HW101	¼"-20 Nut	1
20	HW502	¼" Hanger Keeper	6
21	HW216	¾ x 1¼" Shoulder Bolt	1
22	HW303	¾" Flat Washer	1

ITM #	PART #	DESCRIPTION	QTY.
1	TB230M	Adapter Pipe	1
2	86093M	Extension Pipe	1
3	71249-Z	Muffler	1
4	26811M	Rear Pipe	1
5	26812M	Exit Pipe	1
6	ST509B	Tip	1

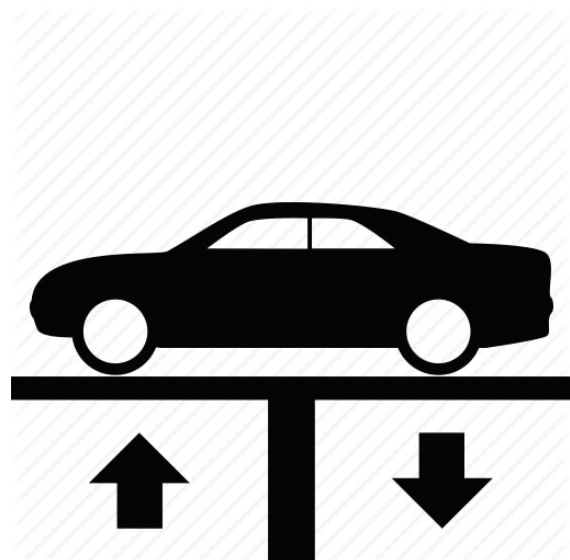
REMOVE STOCK EXHAUST SYSTEM:

2. Raise vehicle up on a hoist or rack to working height. If you don't have access to a hoist or rack, support vehicle with jack stands.

WARNING:
 Avoid serious burns! Allow your vehicle time to cool completely before touching any factory engine components.

To ease preparation and installation of your new kit:

- Apply penetrating lubricant to mounts, bolts and clamps before you remove them.
- Use stands as necessary to support parts as you detach them from your vehicle and again as you install new parts.



- Using a hacksaw or sawsall, cut stock tailpipe off where it exits muffler.



- Separate wire hangers from isolators behind muffler. Remove bolt and hanger connecting stock tailpipe to vehicle frame. Remove tailpipe section from vehicle.



- Remove clamp on muffler inlet, then remove muffler and set aside.

NOTE: Because connection may be significantly crimped by clamp, it may be necessary to heat it for ease of removal. If this does not work, use a hacksaw or sawsall to cut muffler off right after inlet pipe hydrosize, then remove excess.



INSTALL FLOWMASTER EXHAUST SYSTEM

- Remove nuts from stock and Flowmaster clamps, apply anti-seize compound to bolts and re-install nuts.

NOTE: The image in this step is intended for illustrative purposes only and may or may not accurately reflect components included in your kit.

- Every slip fit connection in this kit must seat 3" deep except for muffler connections which must seat 2" deep. Find all slip fit components in your kit and mark them accordingly so your Flowmaster exhaust system fits properly onto your vehicle.



- Identify your vehicle within the specifications listed, then apply the corresponding modifications or assembly combinations to ensure this kit will install properly.

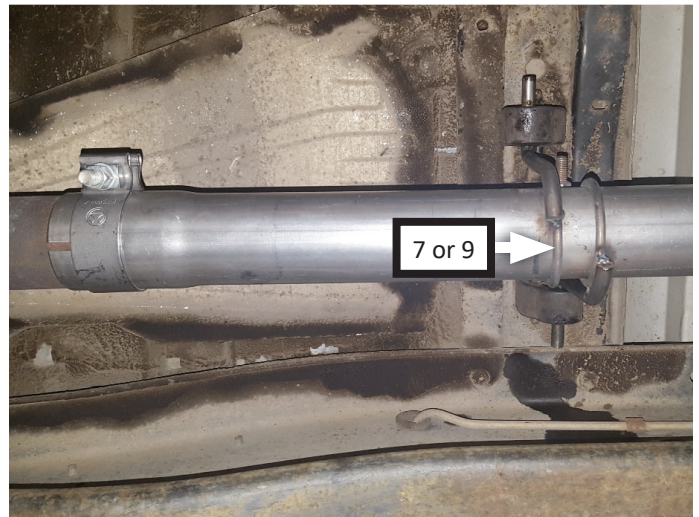
WHEEL BASE	INLET ASSEMBLY:	MODIFICATION
119"	Adapter Pipe	No modification necessary.
135"	Extension + Adapter Pipe	Trim 20" from extension pipe.
139"	Extension + Adapter Pipe	Trim 16" from extension pipe.
155"	Extension + Adapter Pipe	No modification necessary.

- If applicable, place **clamp (12)** onto **extension pipe (2)** then connect it to stock front pipe, lining extension notch up to stock pipe tab. Tighten clamp just enough to allow for adjustment.

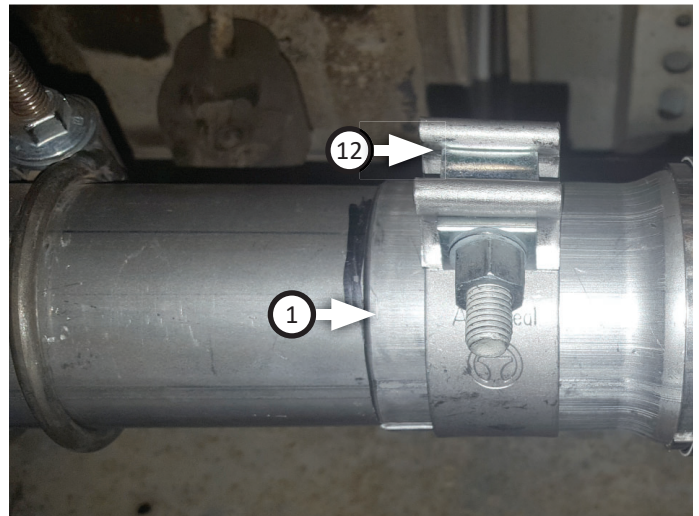


NOTE: If your vehicle has a 135" wheelbase, use **front clamp hanger (7)**. Otherwise, use **front clamp hanger (9)**.

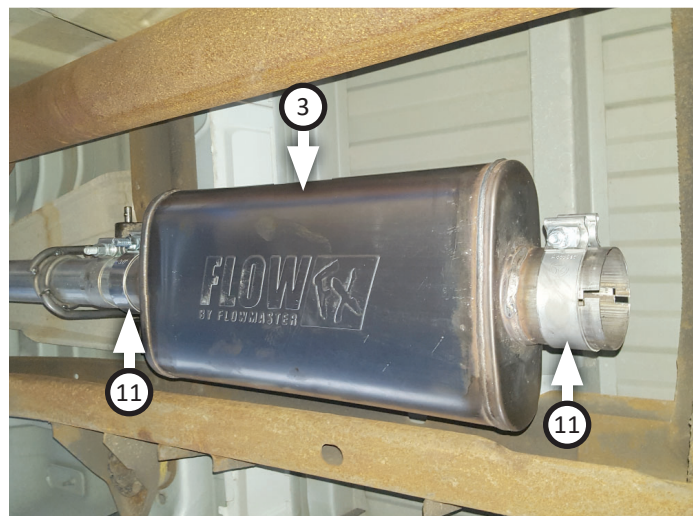
10. Place **front clamp hanger (7 or 9)** onto extension pipe then connect them to isolators.



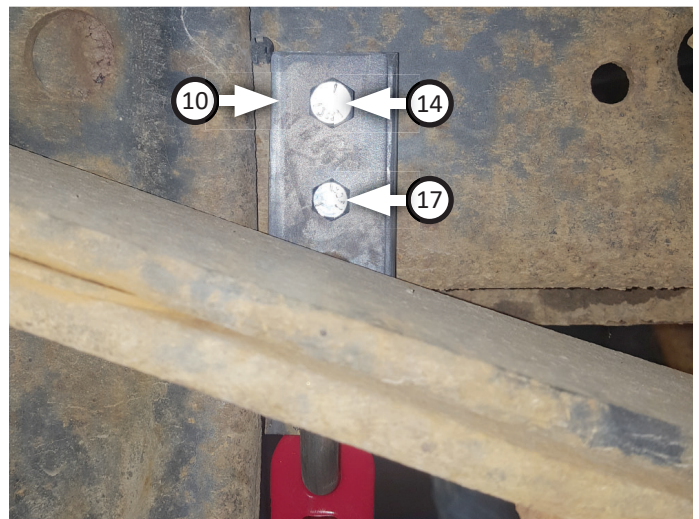
11. Place **clamp (12)** onto **adapter pipe (1)** then connect it to extension or factory exhaust. Tighten clamp just enough to allow for later adjustment.



12. Place (x2) **clamps (11)** onto **muffler (3)** and connect it to adapter pipe. Tighten front clamp just enough to allow for adjustment.

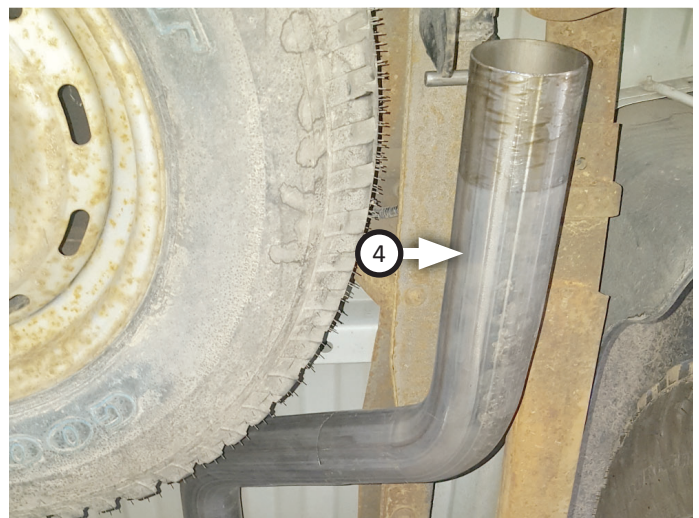


13. Mount **rear hanger (10)** on passenger side of vehicle with **bolts (14, 17)**, **nuts (15, 19)** and **washers (16, 18)**.

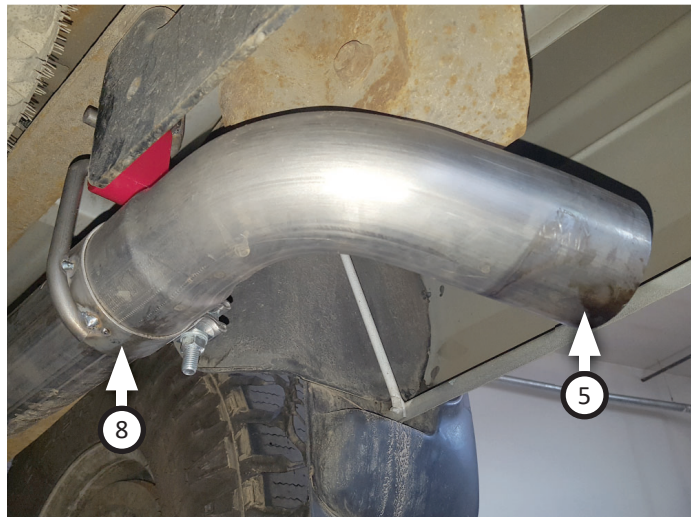


NOTE: If you have an aftermarket tow hitch (such as Drawtite), we have included a **bolt (21)** that will allow you to fasten **rubber hanger (13)** directly to side of tow hitch. There are (x2) holes located on side of hitch where mounting arms narrow toward front of vehicle. Place **rubber hanger (16)** up to forward hole and insert bolt with **flat washer (22)** through rubber hanger from inside of hitch.

14. Route **rear pipe (4)** over axle then connect it to muffler. Insert wire hangers into isolators then tighten clamps just enough to allow for adjustment.



15. Place **rear clamp hanger (8)** onto **exit pipe (5)** then connect it to rear tailpipe and hang wire into isolator.



16. Place **tip (6)** onto exit pipe and tighten inlet. Complete step on left rear tailpipe.
17. Adjust exhaust components for fit; maintaining ½" clearance and compensating for suspension, travel and vibration, then tighten all clamps. Finally, fit (x6) **hanger keepers (20)** onto each sideways hanger.
18. Recommended: Secure slip-fit connections with a 1-inch tack weld then spray high-temp paint over each weld to prevent rust and premature corrosion.

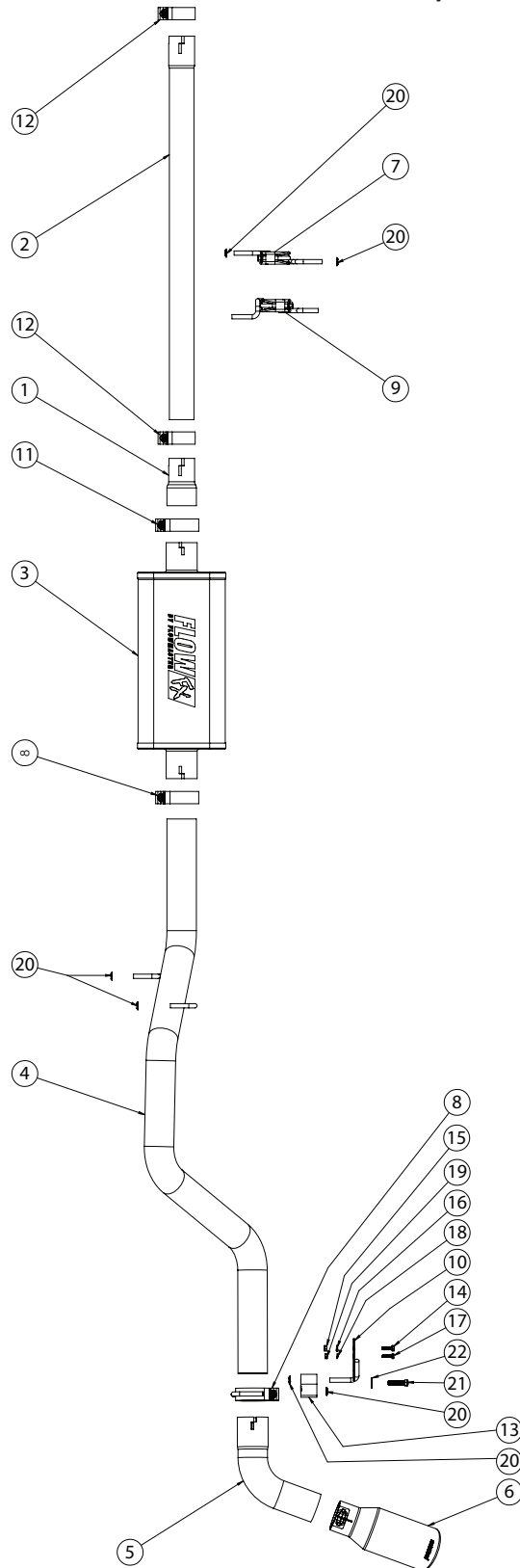


Congratulations, the installation of your FLOWMASTER performance exhaust system is now complete!





Installation Diagram
717947
1994-02 RAM 1500/2500/3500
3.9L, 5.2L & 5.9L ENGINE
2/4 Wheel Drive & All Wheelbases



Discover other performance exhaust systems on our website.