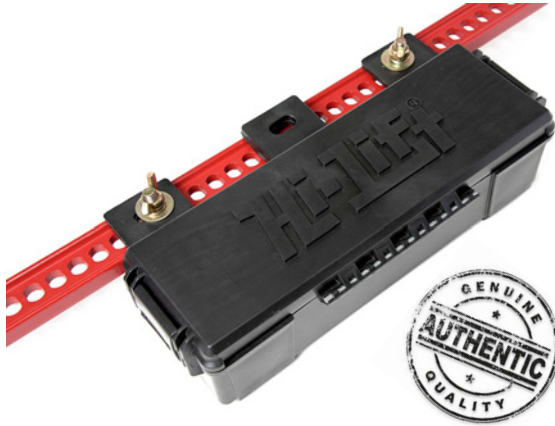




WHAT'S NEW?

Hi-Lift® GEAR BOX

*Convenient Storage for Hi-Lift® Accessories,
Recovery Gear, Tools, etc.*



Part #GB-525

- Mounts directly to the Hi-Lift® Jack Bar for easy access
- **Lockable**—Safely secure Gear Box to the Hi-Lift® while also securing the contents of the Gear Box (**LOCK NOT INCLUDED**—Use padlock or Hi-Lift® Versatile Locking Knob (Part #VERS-LK))
- Water-resistant to protect contents from the elements
- Metal reinforced plastic provides strength and durability
- Inside dimensions—15-1/2" x 5-1/8" x 4"





Hi-Lift® “REFLECTIVE LOOP” RECOVERY STRAPS

Ideal for winching and recovery use with a Hi-Lift® Jack



3 Strap Options:

3” x 30’ 30,000lbs (13607kg)
Part #STRP-330 /

2” x 30’ 20,000lbs (9071kg)
Part #STRP-230

3” x 15’ 30,000lbs (13607kg)
Part #STRP-315

- Polyester material for a controlled pull and to reduce dangerous recoil
- Designed for slower, more exact extraction requirements
 - Reflective loops make night recovery easier
 - With minimal light, the loops reflect and “shine” making it easier to see both connecting points during the night recovery process



JACK COMPANY

WHAT'S NEW