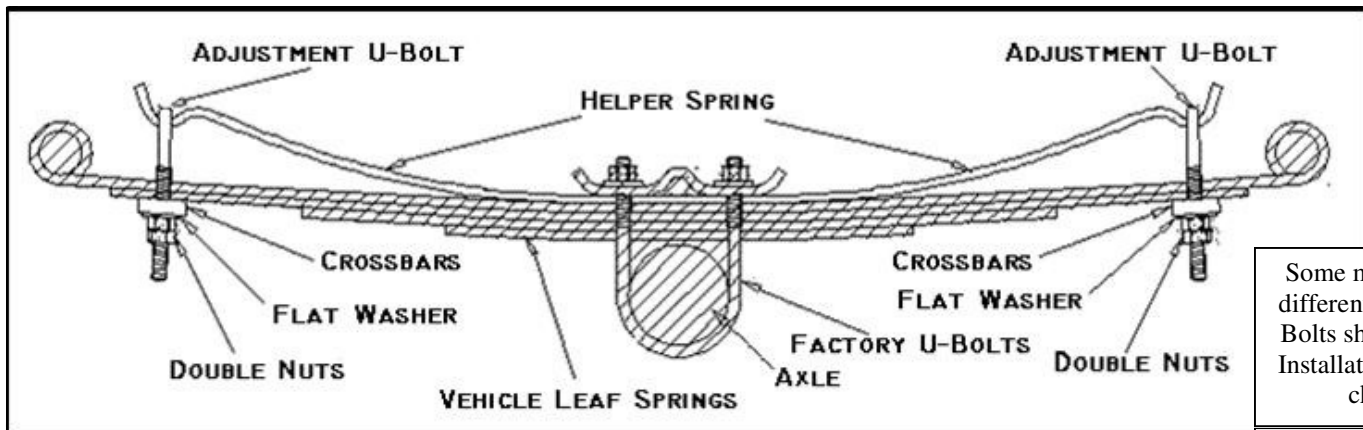


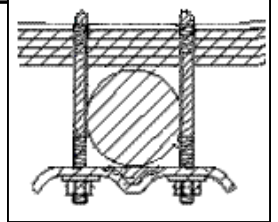
## INSTALLATION INSTRUCTIONS ADD A LEAF HELPER SPRING

Thank you for purchasing a quality Hellwig Product.

PLEASE READ THIS INSTRUCTION SHEET COMPLETELY BEFORE STARTING YOUR INSTALLATION



Some models have different Factory U-Bolts shown below. Installation does not change



### TORQUE TABLE

**BOLT SIZE:** 3/8" = 20-30 ft. lbs. - 7/16" = 35-45 ft. lbs. - 1/2" = 50-70 ft. lbs. - 9/16" = 70-90 ft. lbs.

**NOTE:** DO NOT INSTALL THIS UNIT ON ANY VEHICLE WITH COMPOSITE (Plastic) LEAF SPRINGS

**NOTE:** IF THIS UNIT IS TO BE INSTALLED ON ANY DODGE VAN OR MOTORHOME CHASSIS MODEL NUMBERS, B300, B400, MB300, MB400, F30, F40, OR F44 WITH THE PLASTIC MOLDED GAS TANK, A SPECIAL CLEARANCE BRACKET IS REQUIRED AND IS AVAILABLE THROUGH YOUR LOCAL DEALER OR THROUGH HELLWIG PRODUCTS CO.

**NOTE:** Your spring may have a small hole in the end, this is for our manufacturing process and will not be used.

1. On the driver's side rear spring, remove U-bolts at axle and place the helper spring on top of the main spring and orient spring for best fit. Reinstall the factory U-bolts and tighten to the manufacturer's torque specification. Repeat process for passenger side. **DO NOT REMOVE U- BOLTS FROM BOTH SIDES AT THE SAME TIME.**
2. Raise the vehicle by the frame so the wheel is slightly touching the ground, be sure to use jack stands and to chock tires.
3. Install adjustment U-bolts with the crossbars, washers and nuts.
4. Return the vehicle to the ground and adjust the U-bolts to desired height and tension. Double nut the U-bolts after adjusting. The clearance between the helper spring and the truck spring should be no less than 1/4 inch.
5. Repeat process for the other side.
6. Bounce the vehicle checking for clearance on all undercarriage components, brake lines, fuel lines, wiring, etc. Re-check your installation after one week of driving and periodically on a regular basis.

**IMPORTANT NOTE:** This unit is designed to increase the level load carrying capacity of your vehicle. Never load the vehicle this unit is installed on beyond the manufacturer's maximum gross vehicle weight rating.