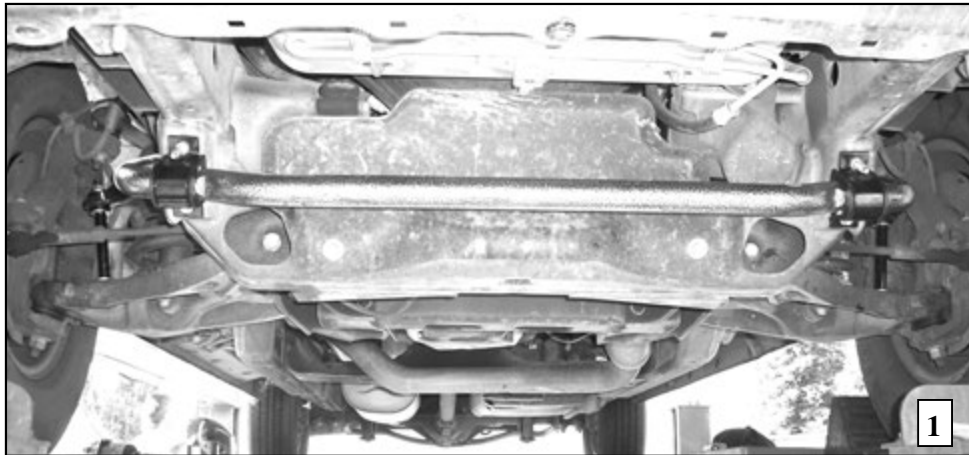


Hellwig PRODUCTS

INSTALLATION INSTRUCTIONS Front Sway Bar

Thank you for purchasing a quality Hellwig Product.

PLEASE READ THIS INSTRUCTION SHEET COMPLETELY BEFORE STARTING YOUR INSTALLATION



SAFETY: BEFORE BEGINNING INSTALLATION BE SURE TO SET THE PARKING BRAKE AND CHOCK THE WHEELS.

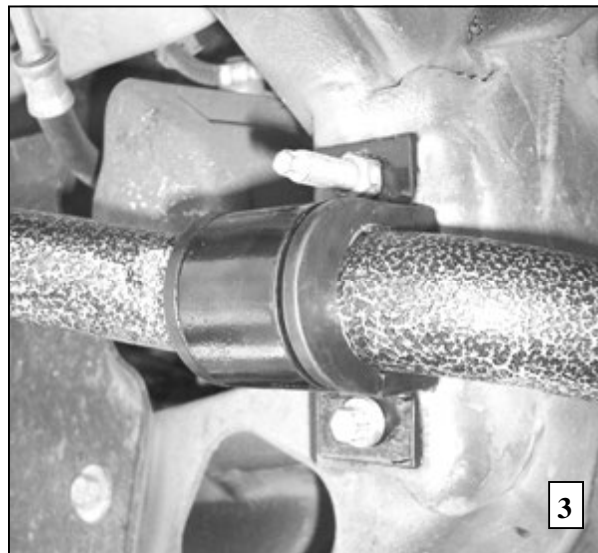
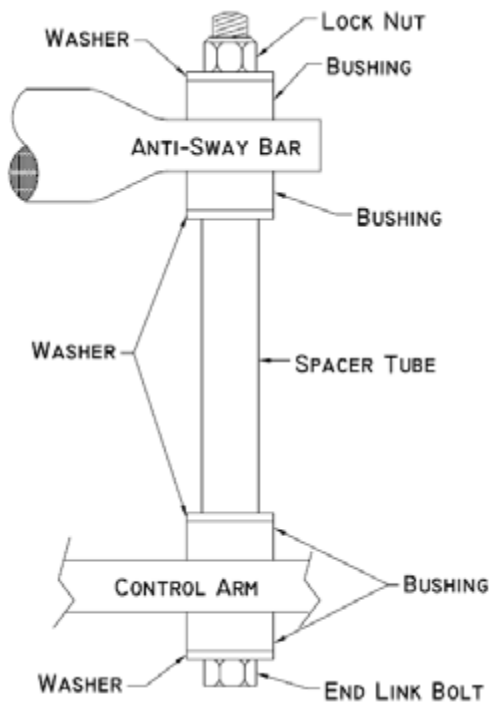
NOTE: TO EASE INSTALLATION AND PROPERLY ADJUST THE BAR, THE WEIGHT OF THE VEHICLE MUST BE ON THE SUSPENSION AS IF DRIVING DOWN THE ROAD. DO NOT RAISE THE VEHICLE BY THE FRAME.

TORQUE TABLE

Bolt Size 3/8"— 35 ft lbs * Bolt Size 7/16"— 45 ft lbs* Bolt Size 1/2"—75 ft lbs *Bolt Size 9/16"— 90 ft lbs

1. Remove factory front sway bar and end links. Keep the factory hardware since some of it will be reused.
2. Lubricate the insides of the D-shaped polyurethane bushings and place them on the Hellwig sway bar. Then place the U-plates over the bushings.
3. Assemble end links on lower control arm following the diagram and Photo 2 leaving off the final bushing, washer and nut.
4. Place the bar on the end links with arms going up.
5. Bolt the U-plates to the stock location using the factory bolts as shown in Photo 3. Leave loose at this time.
6. Place the final end link bushing and washer and tighten the lock nut until the donut bushings just start to bulge. Tightening this nut too much can cause damage to the bushings.
7. Make sure the bar is centered and torque the U-plate bolts.
8. **Bounce the vehicle with the wheel turned full lock left and right checking for clearance on all under carriage components: fuel tank, shocks, exhaust, differential, brake and fuel lines, etc.**
9. Test drive the vehicle and recheck all clearances and the installation alignment. Adjust as needed. Re-check your installation after one week of driving and periodically on a regular basis.

Hellwig PRODUCTS



Maintenance and Inspection:

Your Hellwig Suspension Product is built to last. However, as with all vehicle systems, it requires routine inspection. Inspect your Hellwig installation looking for secure hardware and tight fitting brackets and bushings. If you do not perform this inspection, have your professional mechanic inspect as described.