

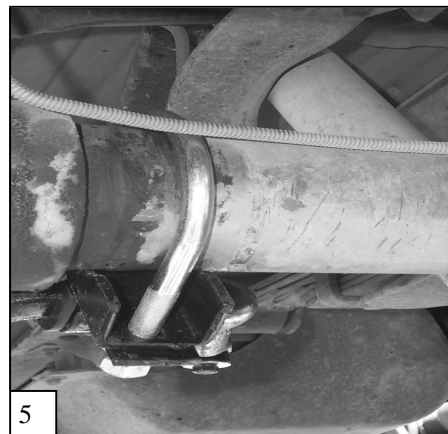
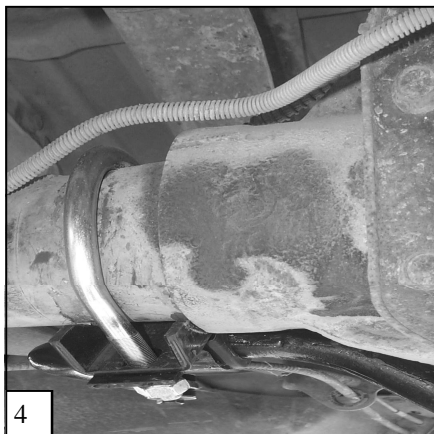
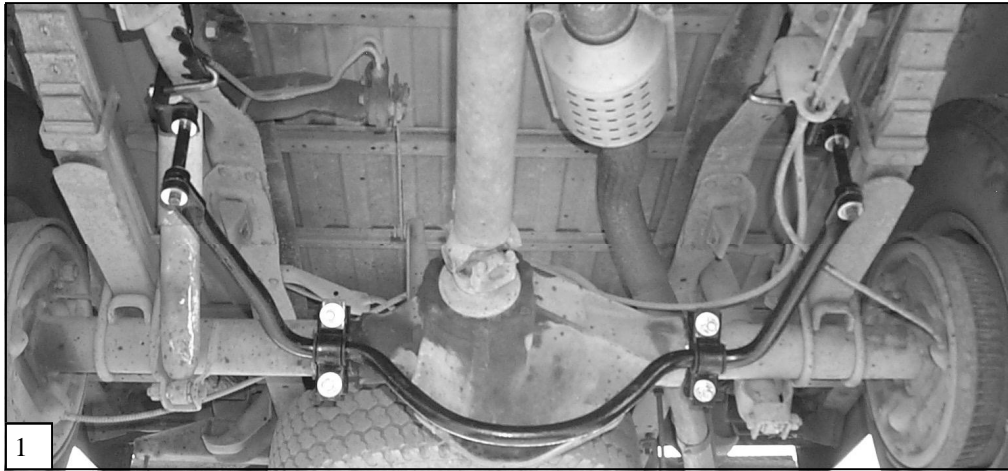
Hellwig PRODUCTS

INSTALLATION INSTRUCTIONS REAR STABILIZER BAR

84-87 C/K 10-20

Thank you for purchasing a quality Hellwig Product.

PLEASE READ THIS INSTRUCTION SHEET COMPLETELY BEFORE STARTING YOUR INSTALLATION



Hellwig PRODUCTS

TORQUE TABLE

BOLT SIZE: 3/8" = 20-30 ft. lbs. – 7/16" = 35-45 ft. lbs. – 1/2" = 50-70 ft. lbs. – 9/16" = 70-90 ft. lbs.

SAFETY: BEFORE STARTING YOUR INSTALLATION, BE SURE TO SET PARKING BRAKE AND CHOCK TIRES.

NOTE: TO EASE INSTALLATION AND TO PROPERLY ADJUST THE BAR, THE WEIGHT OF THE VEHICLE MUST BE ON THE SUSPENSION, AS IF DRIVING DOWN THE ROAD. DO NOT RAISE VEHICLE BY THE FRAME.

NOTE: THIS SWAY BAR IS DESIGNED TO MOUNT BELOW THE AXLE TUBES WITH THE ARMS OF THE SWAY BAR FAGING TOWARDS THE FRONT OF THE VEHICLE.

NOTE: IN SOME APPLICATIONS IT MAY BE NECESSARY TO REVERSE THE MOUNTING OF THE SWAY BAR TO ALLOW FOR THE BEST FIT FOR YOUR PARTICULAR VEHICLE.

NOTE: THIS KIT INCLUDES LOCK NUTS WHICH REQUIRE TIGHTENING WITH A WRENCH AFTER BEING STARTED BY HAND.

1. Install the D-shaped poly bushings on the sway bar between the center hump and the arms of the sway bar.
2. Position the sway bar on the rear axle . SEE PHOTO ONE (1).
3. Install the U-bolts over the axle tubes with the legs pointing towards the front of the vehicle. Position the saddle brackets over the legs of the U-bolts. The saddle brackets will be in front of the rear axle. Position the sway bar on the rear axle align the D-bushings to match the U-bolts and saddle brackets on the axle assy. Install the U-plates over the D-bushings and fasten with mounting hardware provided. **Leave loose at this time to allow for adjustment later.** (Make sure that the U-bolts are under the brake lines on the axle). SEE PHOTOS FOUR (4) AND FIVE (5).
4. Locate the hole on the trucks frame just behind the forward spring hanger on both sides. SEE PHOTO TWO (2) AND THREE (3). Install the angle frame brackets using the (1/2" x 1-1/2") cap screw and mounting hardware provided. The J-bolt will hook the lower lip of the frame and extend through the second hole on frame brackets.
5. Assemble the end link assemblies and attach to the brackets attached to the frame. Tighten until the bushings begin to bulge slightly. **Do not over tighten our damage will result to the end link bushings.**
6. Raise the sway bar arms up to the end links and finish assembling the end links. Rotate the sway bar on the axle to be centered and level with the ground and so the end links are straight up and down as possible. There should be no less than (1/4") clearance on the differential housing and the hump of the sway bar.
7. Once the sway bar has been centered and the end links are straight up and down as possible torque all the mounting hardware to the specified rate.
8. Bounce the vehicle checking for clearance on all under carriage components. Be sure all nuts and bolts are securely tightened and double nuts are used where provided.
9. Recheck your installation, look for clearance on wiring, exhaust, fuel and brake lines etc.. After one week of driving recheck your installation readjust if necessary. Recheck on a monthly regular basis thereafter.

Hellwig PRODUCTS

PARTS LIST
RSB KIT # 7549
“84-87” C/K 10-20

PART #	QTY	DESCRIPTION
20217549	1	1-1/8” SWAY BAR
20907549	1	COMPLETION KIT
111000486	2	1-1/8” POLY BUSHING
20800378	2	U-PLATE
20800871	2	SADDLE BRACKET
118020366	2	1/2” X 3-5/8” X 5” ROUND U-BOLT
20800555	2	ANGLE BRACKET
20800627	2	J-BOLT
101500157	2	7/16” X 6” END LINK
125030336	1	BUSHING BAG # BG-336
111000389	8	END LINK BUSHING
125020188	1	SMALL PARTS BAG # BG-188
101500124	2	1/2” X 1-1/2” CAP SCREW
102529043	2	1/2" LARGE AREA FLAT WASHER
107521044	2	1/2" LOCK NUT
107401042	4	7/16" LOCK NUT
102520043	4	1/2” FLAT WASHER
20800812	2	1/2” X 2-3/4” END LINK SPACER
105521044	8	1/2" HEX NUT
102400043	14	7/16” FLAT WASHER
135007549	1	INSTRUCTION SHEET (R-238)