

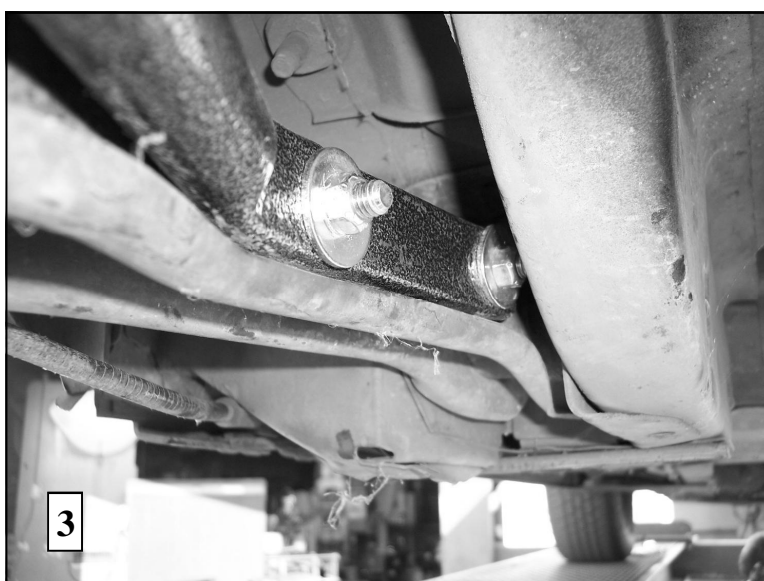
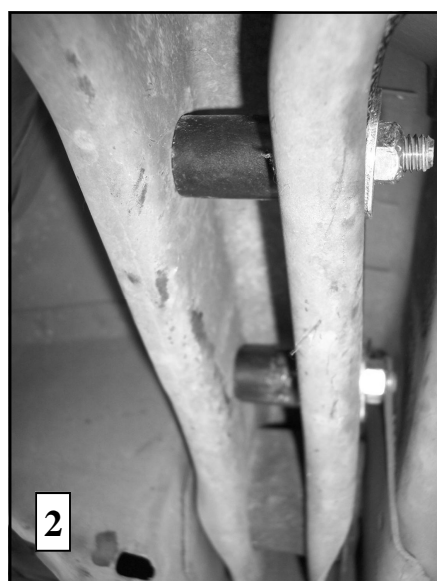
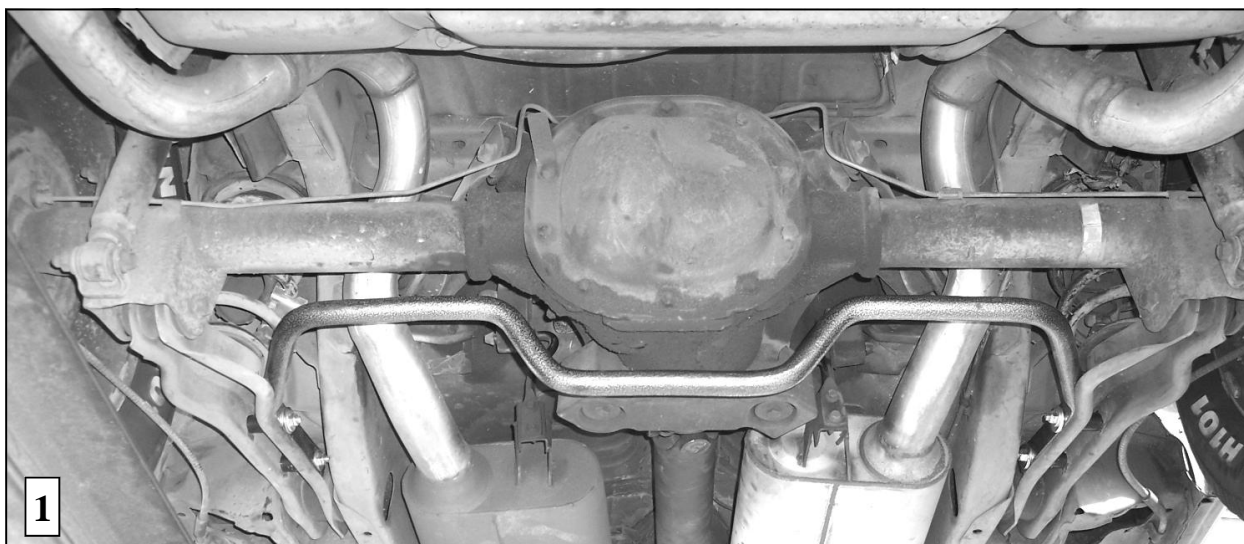
Hellwig PRODUCTS

INSTALLATION INSTRUCTIONS

Rear Stabilizer Bar 6801

1979-2004 Ford Mustang Rear Sway Bar

Thank you for purchasing a quality Hellwig Product.



Hellwig PRODUCTS

TORQUE TABLE

Bolt Size 3/8"— 35 ft lbs * Bolt Size 7/16"— 45 ft lbs* Bolt Size 1/2"—75 ft lbs *Bolt Size 9/16"— 90 ft lbs

SAFETY: BEFORE BEGINNING INSTALLATION BE SURE TO SET THE PARKING BRAKE AND CHOCK THE WHEELS.

1. Ensure that the vehicle is secure and stable before working under the vehicle.
2. If vehicle is equipped with factory rear sway bar, remove factory rear sway bar.
3. Install spacers in control arm as shown in photo (2). The spacers may need to be ground down to fit between the walls of the control arms. They are made slightly long to accommodate variations in the factory control arms. Spacers must be used to avoid crushing the control arms when the bolts are tightened.
4. Attach sway bar to control arm using supplied hardware. Install large washers on surface of sway bar as shown in Photos Two (2) and Three (3).
5. Torque bolts to 35 ft-lb
6. **Bounce the vehicle checking for clearance on all under carriage components.** Test drive the vehicle and re-check all clearances and the installation alignment. Adjust as needed. Re-check your installation after one week of driving and periodically on a regular basis.