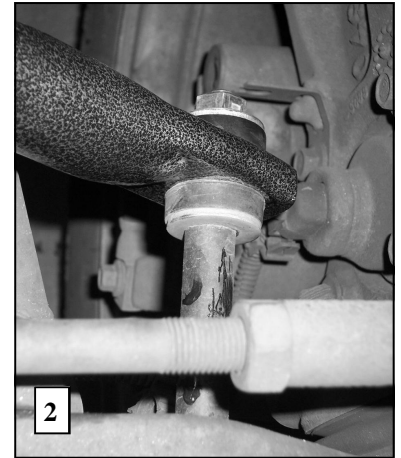
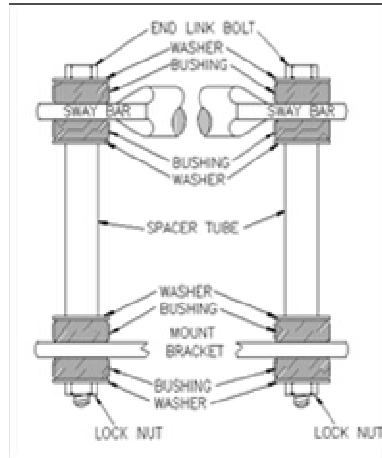
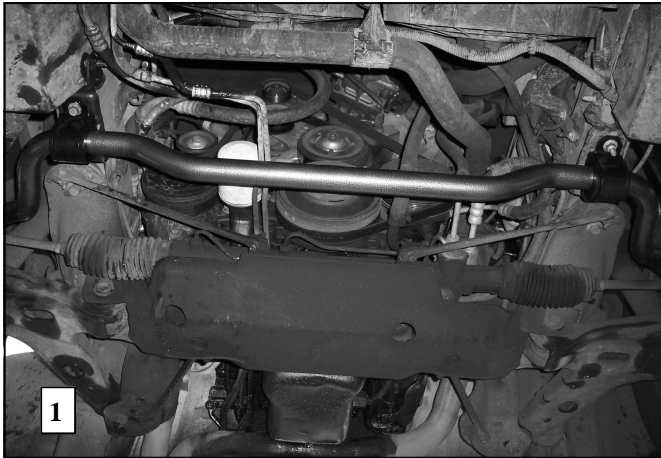


Hellwig PRODUCTS

INSTALLATION INSTRUCTIONS FRONT STABILIZER BAR 93-02 CAMARO & FIREBIRD

Thank you for purchasing a quality Hellwig Product.

PLEASE READ THIS INSTRUCTION SHEET COMPLETELY BEFORE STARTING YOUR INSTALLATION



TORQUE TABLE

BOLT SIZE: 3/8" = 20-30 ft. lbs. - 7/16" = 35-45 ft. lbs. - 1/2" = 50-70 ft. lbs. - 9/16" = 70-90 ft. lbs. - 5/8" = 120 ft. lbs.

SAFETY: BEFORE STARTING YOUR INSTALLATION, BE SURE TO SET PARKING BRAKE AND CHOCK TIRES.

NOTE: TO EASE INSTALLATION AND TO PROPERLY ADJUST THE BAR, THE WEIGHT OF THE VEHICLE MUST BE ON THE SUSPENSION AS IF DRIVING DOWN THE ROAD. DO NOT RAISE VEHICLE BY THE FRAME.

NOTE: THIS SWAY BAR IS A REPLACEMENT FOR THE FACTORY INSTALLED FRONT SWAY BAR.

NOTE: THIS KIT INCLUDES LOCK NUTS WHICH REQUIRE TIGHTENING WITH A WRENCH AFTER BEING STARTED BY HAND.

1. Remove the front sway bar along with all mounting hardware. Do not discard the frame mounting bolts, as you will need them to complete the installation of the new front sway bar.
2. Install the D-shaped poly bushings on the new sway bar in approximately the same location as the old sway bar. SEE PHOTO ONE (1).
3. Locate the predrilled mounting holes on the lower control arms of the vehicle. Install the end link bushings on the end links. Attach the end link assemblies to the lower control arms of the vehicle. SEE Diagram and PHOTO TWO (2). **Leave loose at this time.**
4. Raise and position the sway bar on the frame. Install the U-plates and attach using factory mounting bolts from step 1.
5. Position the arms of the sway bar over the end link assemblies and install the end link bushings. The sway bar should be centered and the end link assemblies are to be straight up and down as possible. Tighten end links until bushings bulge slightly. **Do not over tighten.** SEE DIAGRAM and PHOTO TWO (2).
6. Tighten the frame bolts to factory specifications.
7. Bounce the vehicle and check for clearance on all undercarriage components; wiring, springs, brake and fuel lines.
8. Turn the wheels full lock left then right check clearance on the wheels, tires and steering components.
9. After one week of driving recheck your installation. Recheck on a monthly regular basis thereafter.