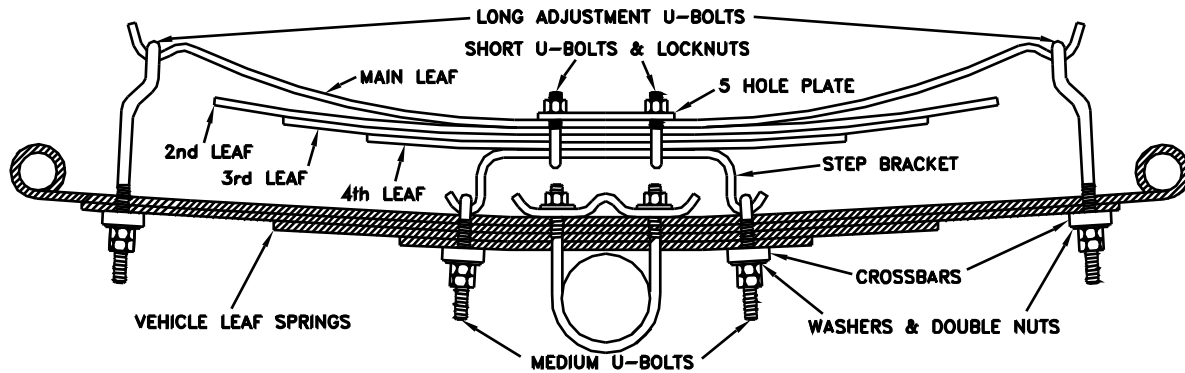


Hellwig PRODUCTS

INSTALLATION INSTRUCTIONS

Thank you for purchasing a quality Hellwig Product.

PLEASE READ THIS INSTRUCTION SHEET COMPLETELY BEFORE STARTING YOUR INSTALLATION PROCEDURES.



TORQUE TABLE

BOLT SIZE: 3/8" = 20-30 ft. lbs. - 7/16" = 35-45 ft. lbs. - 1/2" = 50-70 ft. lbs. - 9/16" = 70-90 ft. lbs

SAFETY: PARK YOUR VEHICLE ON A FLAT LEVEL SURFACE, SET THE PARKING AND CHOCK THE FRONT TIRES.

NOTE: THIS KIT INCLUDES LOCK NUTS WHICH REQUIRE TIGHTENING WITH A WRENCH AFTER BEING STARTED BY HAND.

IMPORTANT NOTE: IF YOUR VEHICLE IS EQUIPPED WITH A FACTORY CONTACT OVER LOAD SPRING IT MUST BE REMOVED BEFORE INSTALLING THE NEW HELPER SPRINGS.

1. Raise the rear of the vehicle by the frame so that the rear tires are just slightly contacting the floor. Be sure to block the front tires and use Jack Stands to support the vehicle by the frame. This will increase the vehicle's spring arch to ease installation.
2. Lay out the spring leaves into two (2) sets. Each will consist of a long, medium and a short leaf. LP-35 kits will include a short 4th leaf.
3. Stack the leaves so that the short leaf is on the bottom and the long leaf is on the top. Use the (3/8") bolt, nut and lock washer that are provided to tighten the spring stack tightly. **Tighten this center bolt completely.**
4. Place the spring stack on top of the Step Brackets and install the (5) hole plate on top of the spring stack. Using the small U-bolts and nuts that are provided mount the spring stacks to the Step Brackets with the (5) hole plate. LP-35 kits include longer U-bolts in the leaf spring box. **Tighten completely.** Be sure that the springs are straight in line with the Step Bracket. SEE DIAGRAM.
5. Place the assembled spring on top of the truck springs. Front to rear adjustment may be needed to position the Helper Springs and clear any vehicle components or spring alignment clamps. It may be necessary to reposition the driver side emergency brake tab for clearance to the step bracket. This tab can be flexed outboard to provide clearance.
6. Install the medium U-bolts over the ends of the Step Brackets and install the crossbar with the washers and double nuts to connect the Step Brackets to the truck springs. **Leave loose at this time.**
7. Place the offset U-bolts on the ends of the Helper Springs as shown with the offset away from the ends of the spring. Install the crossbars with the washers and double nuts. **Leave loose at this time.** A C-clamp may be needed to compress the helper spring ends to attach the crossbars and start the threads of the nuts.



8. Align the U-bolts and the Helper Springs to be centered and in line with the truck springs. Tighten the medium length U-bolts on the Step Bracket completely and double nut.
9. Lower the vehicle to the ground and tighten the end U-bolts to attain the desired height and tension. Double nut the U-bolt or loosening will result. Tightening the end U-bolts will increase and loosening will relieve tension. **Be sure to double nut after each adjustment.** Be sure to check for clearance above the Helper Spring to the body, fuel filler hose etc..
10. The minimum tension adjustment is having enough tension on the end U-bolts so that they do not loosen or rattle and move when the vehicle is driven over rough or bumpy surfaces. The maximum is having the end U-bolts tightened so that the ends of the Helper Springs are no closer than (1/4") above the vehicle springs.
11. Check your installation for clearance on all undercarriage components; wires, fuel and brake lines. Test drive the vehicle and recheck your installation, adjust as needed. Recheck on a monthly regular basis thereafter.

IMPORTANT NOTES, WARNINGS AND TIPS

READ THIS INSTRUCTION SHEET COMPLETELY BEFORE STARTING YOUR INSTALLTION

IMPORTANT NOTE: CHECK YOUR INSTALLATION. ARE ALL NUTS AND BOLTS SECURELY TIGHTENED AND DOUBLE NUTTED WHERE PROVIDED? BOUNCE THE VEHICLE CHECKING FOR CLEARANCE ON ALL UNDERCARRAIGE COMPONENTS, MUFFLERS, GAS FILLER PIPES, BRAKE LINES, EMERGENCY BRAKE CABLE, AIR CONDITIONING LINES, RUBBER BOTTOMING PADS, ETC.

Before attempting the installation of any Hellwig Accessory Spring , be sure and identify the vehicle to which the accessory spring will be installed as either being or not being equipped with height sensing brake fluid proportioning valve. If a vehicle is equipped with the brake fluid proportioning valve on the rear axle, it is recommended that any Hellwig Full Time Accessory Spring **NOT** be installed. Only the Progressive Rate Accessory Springs are to be installed on these vehicles. Some of the vehicles manufacturers (FORD, GM, DODGE) have recommended an adjustment or modification of the brake system. If the vehicles height or weight requirements have been changed due to the suspension modifications or unusual load situations, contact your local dealer for correct adjustment after installation.

If you have any questions about the application, please contact Hellwig Products Company inc.

IMPORTANT NOTE: Hellwig helper springs are designed to increase the “ Level Load” carrying capacity of your vehicle. Never load the vehicle that this unit is installed on beyond the manufacturer’s maximum gross vehicle weight rating.