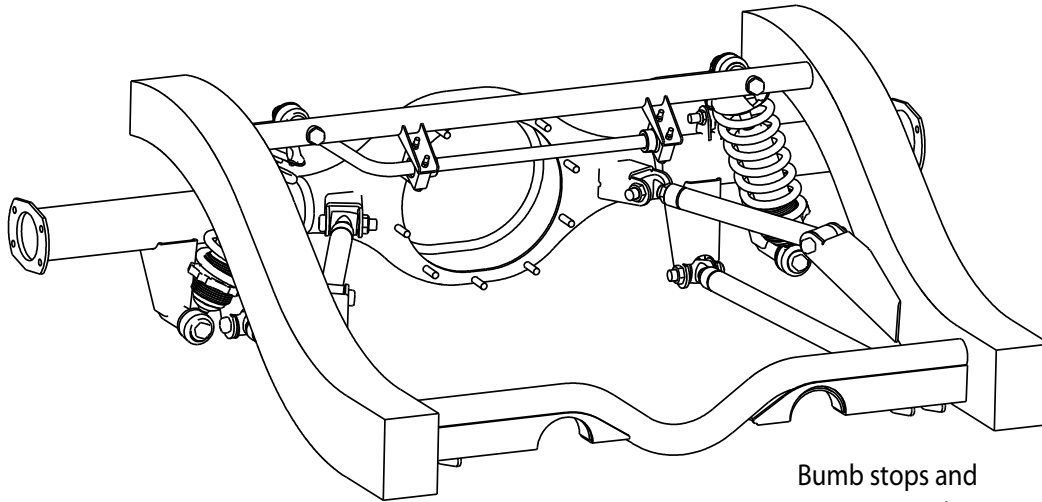


55-57 CHEVY

TRI-FIVE TRIANGULATED 4-LINK KIT

HEXTTK13



Bump stops and mounts not shown.

PARTS LIST

- (1) Upper Crossmember
- (1) Lower Crossmember
- (2) Frame Angle Mounts (L&R)
- (2) Bump Stops
- (2) Bump Stop Mounts
- (2) Axle Shock Mounts
- (2) Axle Sway Bar Mount Tabs
- (2) Axle Lower Link Mounts
- (2) Axle Upper Angle Mounts
- (4) Adjustable Links
- (1) Hardware Pack

ASSEMBLY

1 Install the axle brackets onto the axle housing (Figure 1 & 2)

Please note the axle brackets are symmetrical with the centerline of the housing. It is not uncommon for your housing "banjo" to be off center. Measure from the outside edge of each outer flange and mark the halfway point to locate the center of your housing, Please note your housing should be pointed down by 2 degrees from vertical, at the same time all of the mounts (except for the angle brackets) should be vertical (Figure 2). The angle brackets top face will be horizontal. Once in correct, tack weld the brackets into place.

2 Install the lower crossmember (Figure 3)

1" Below the body mounts and 5/8" down from the top of the frame rail is the crossmember (Figure 3). It is not uncommon to trim equal amounts both ends of the crossmember to fit. Test fitment and be sure the sides are exactly vertical before tack welding into place.

3 Mock up the suspension (Figure 3)

Use the 4 link bars to locate the triangulated frame mounts to your frame. Adjust pinion angle until it is 2 degrees down. Please note the center of the hole ("Hole A" in Figure 3) should be 4-5/16" when measured vertically from the center of the top hole on the lower crossmember, and 13-3/8" measured horizontally. For proper suspension geometry, do not modify these dimension.

NOTICE: Bars may require shorter length then supplied. Verify the length of the bars necessary for installation, trim to fit, then weld in bungs.

4 Upper Crossmember (Figure 3)

Temporary install the coil over shocks to the lower crossmember and the triangulated frame mounts. Please note they should be vertical Front-to-back, and at an inward angle when viewed from the front. See top figure. This will locate the approximate position for the upper crossmember. Once located be sure to shock mounts and crossmembers are level and then tack weld the upper crossmember in place. (Fig 3)

5 Mount Bump Stops (Figure 3)

To locate the bump stops mounts remove the shocks and lift the axle housing until it reaches the frame 100%. Once completed tack weld the bump stop mounts so that they are flush with the bottom of the frame for the outside frame rails.

6 Wrap it up

At this point you should double check all measurements, and fitment. Once confirmed remove the links, coil-overs and axle housing, and permanently weld all the components to the correct part. Once completed install axle and coilovers.

55-57 CHEVY TRI-FIVE TRIANGULATED 4-LINK KIT

HEXTTK13



FIGURE 1

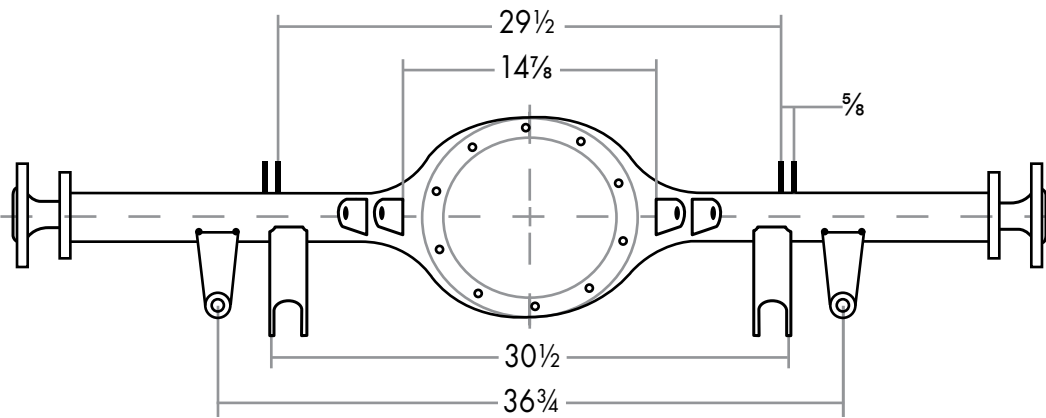


FIGURE 2

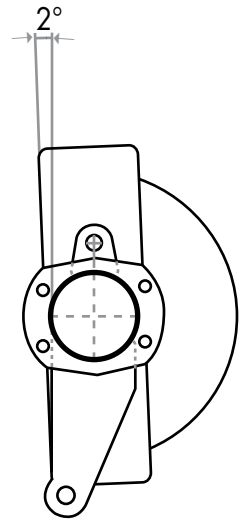
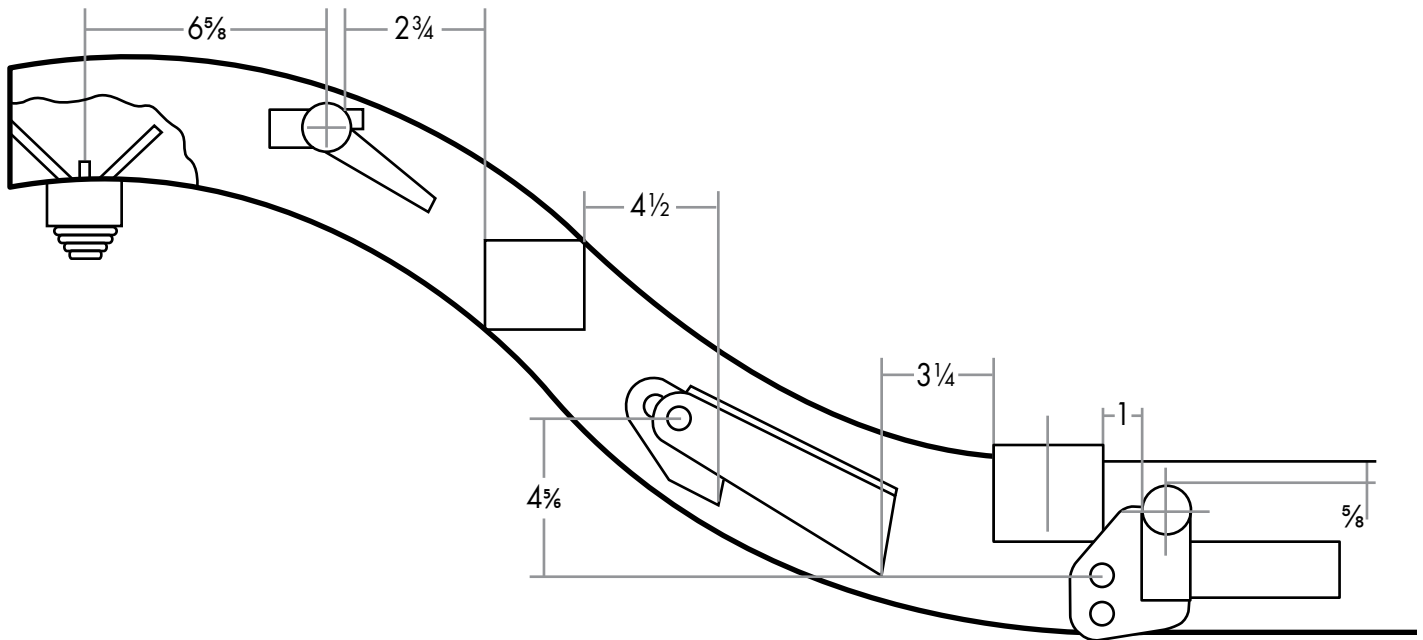


FIGURE 3



HEXTTK13

WITH OPTIONAL SWAY BAR

- 7 Sway bar components**
Slide on the 6 components that go on the sway bar – the mounting blocks, rubber bushings and locking collars. See Figure 4.
- 8 Mount**
Mount the mounting blocks onto the upper crossmember. See Figure 5.
- 9 Adjust**
Adjust the sway bar links all the way inward to the end of the thread (do not forget the lock nut), and back out about $\frac{3}{8}$ ". This allows for adjustment both ways. Using axle tabs, mount the bottom of each onto the axle. Attach the sway bar to the other end of the link on one side only.
- 10 Wrap it up**
After installing the third member, spindles, exles, brakes and bearings, set the car down onto a flat and level surface, and hook up the last sway bar link. This ensures that there is no pre-load on the sway bar, which would cause it to tweak suspension.

FIGURE 4

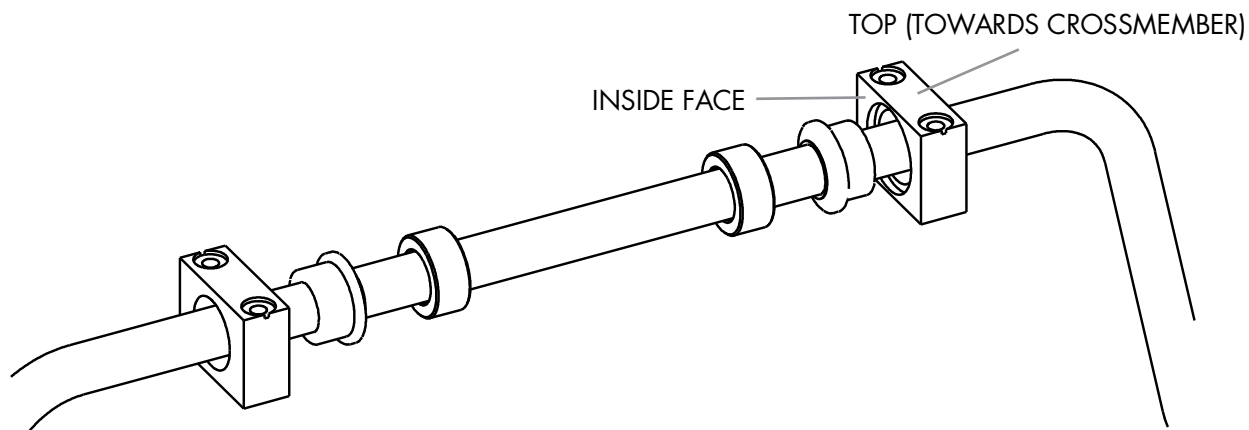


FIGURE 5

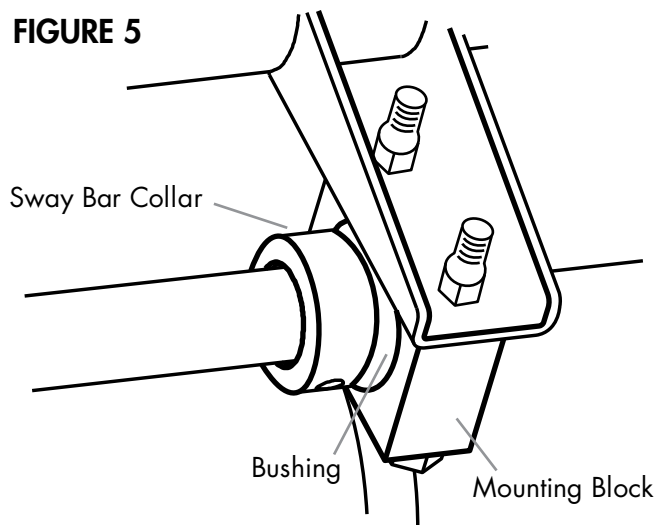
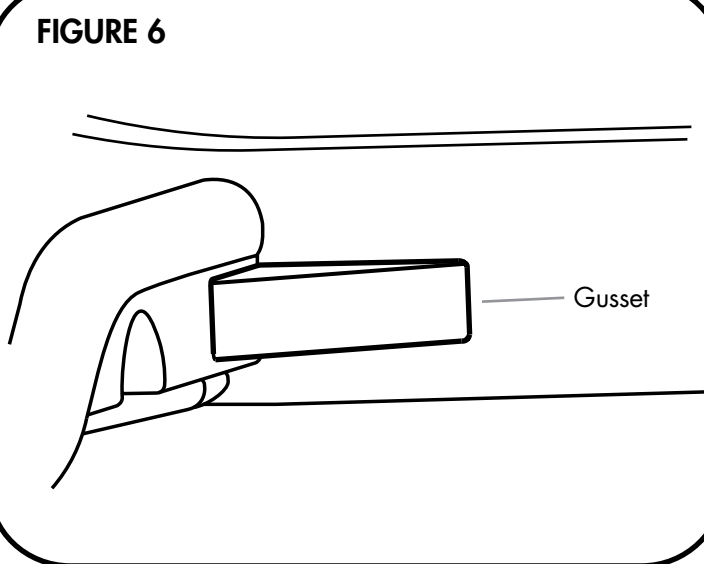
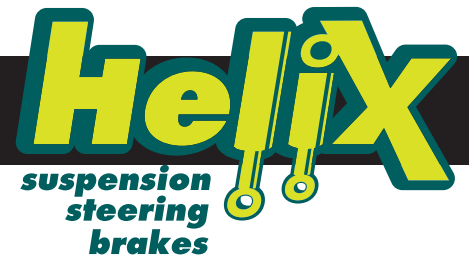


FIGURE 6





BAR SIZING & MODIFICATION

In some installation cases you may wish to relocate one or more of the mounts to a different location to increase performance, or accommodate other modifications you have made to your vehicle. As such, this kit offers trim to fit bars. Please follow the steps below to ensure proper fitment for your vehicle.

- 1.) Measure needed length
- 2.) Cut bar xx shorter
- 3.) Weld end into bar