

HEXPBA

MODEL 'A' BRAKE PEDAL ASSEMBLY

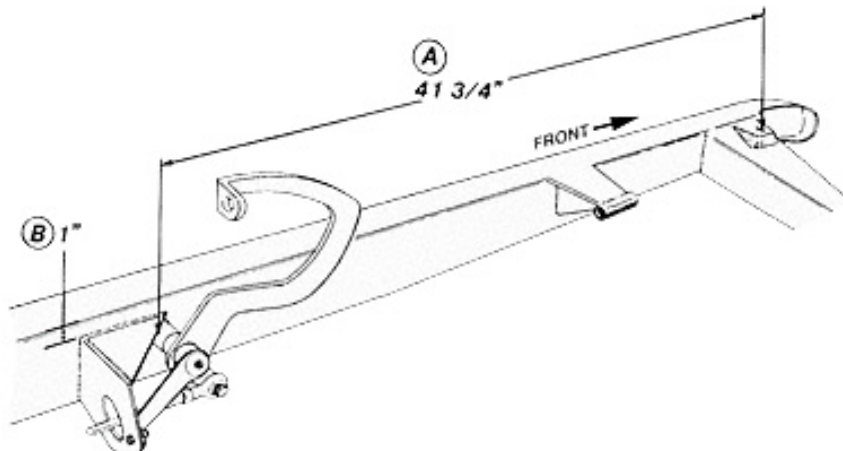
The Model 'A' brake pedal-master cylinder assembly is positioned as follows:

A. The center of the pedal pivot is positioned $41\frac{3}{4}$ " back from the center of the radiator mounting hole.

B. The top of the master cylinder bracket is located 1" below the top of the frame.

All welding should be performed by a qualified welder.

PLEASE NOTE: The above dimensions place the pedal assembly in the optimum position for use with our Model 'A' chassis and components. Minor changes may be required to find the best position on your chassis.



'32 FORD BRAKE PEDAL ASSEMBLY

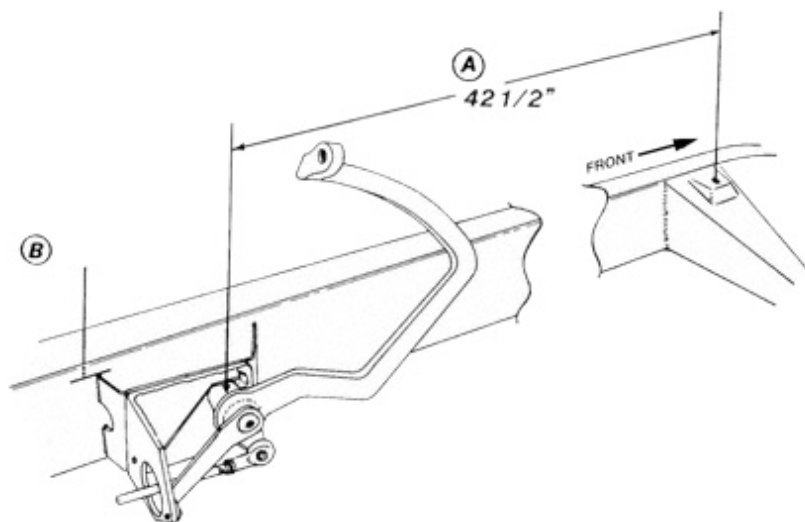
The '32 Ford brake pedal assembly is positioned as follows:

A. The center of the pedal pivot is positioned $42\frac{1}{2}$ " back from the center of the radiator mounting hole.

B. The top of the mounting bracket is located parallel to and $1\frac{1}{2}$ " below the top of the frame rail.

All welding should be performed by a qualified welder.

PLEASE NOTE: The above dimensions place the pedal assembly in the optimum position for use with our '32 chassis and components. Minor changes may be required to find the best position on your chassis.

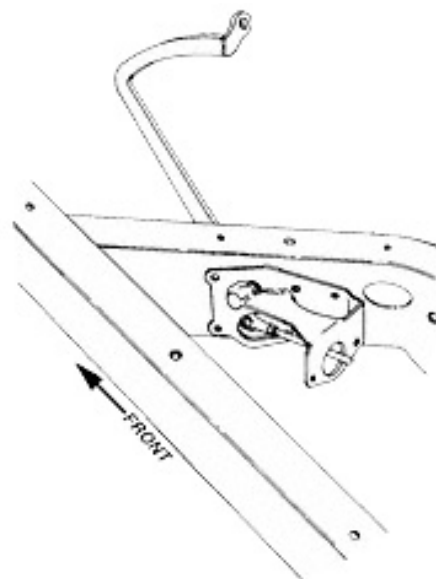
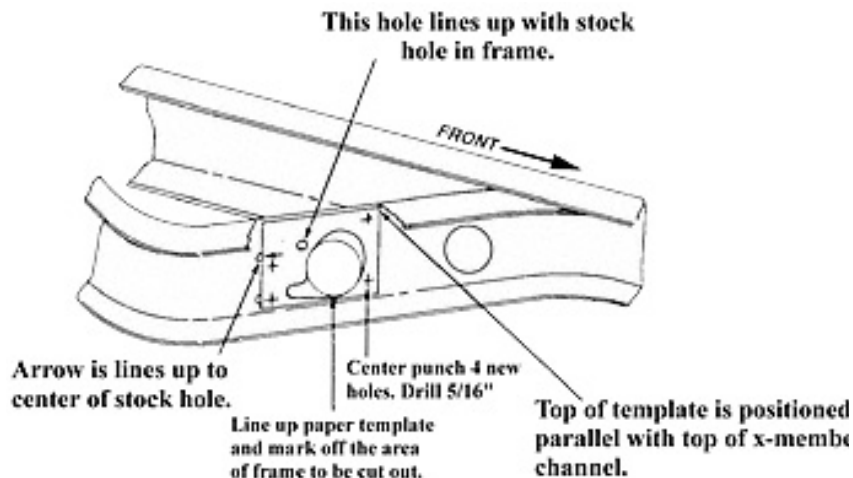


35-40 FORD FRAME MOUNT PEDAL ASSEMBLY

HEXPBA14

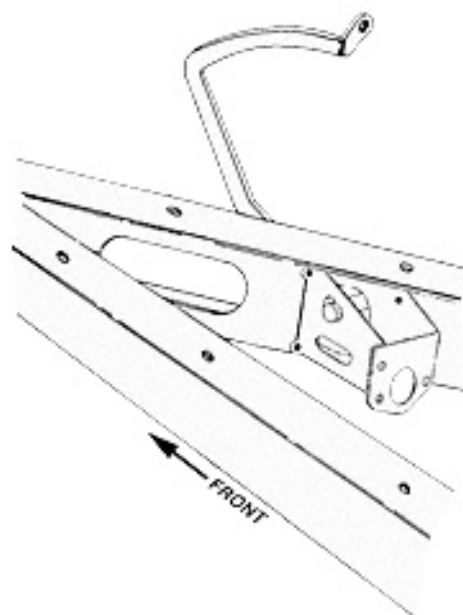
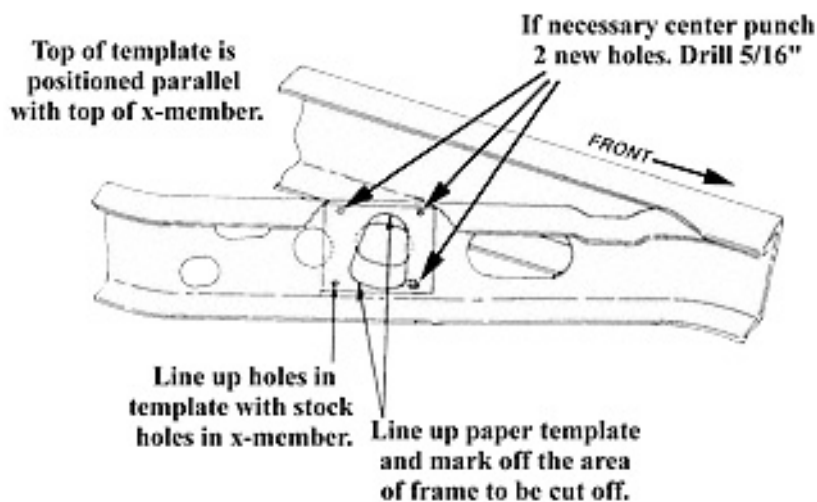
'33-'34 FORD BRAKE PEDAL ASSEMBLY

Mounting the '33-'34 Ford brake pedal assembly requires some minor cutting and redrilling. Using the template provided on page 4, and the instructions below, the pedal assembly is easily installed.



'35-'40 FORD BRAKE PEDAL ASSEMBLY

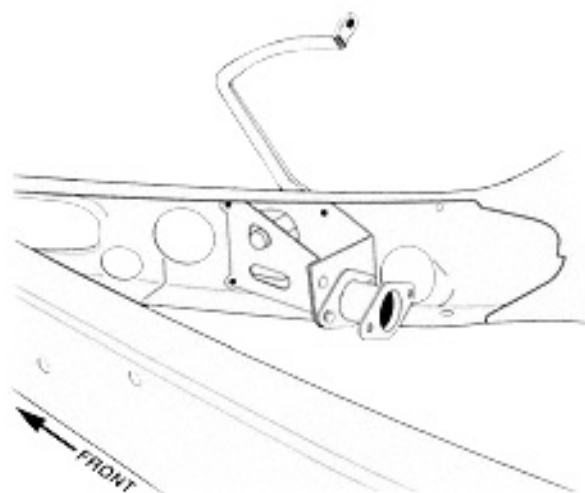
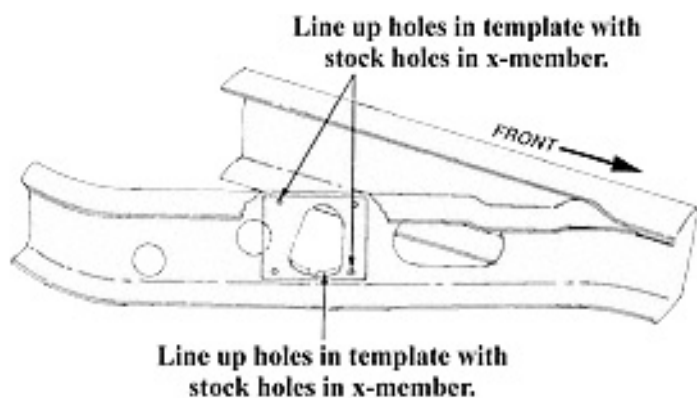
Mounting the '35-'40 Ford brake pedal assembly requires some minor cutting and redrilling. Using the template provided on page 4, and the instructions below, the pedal assembly is easily installed.



HEXPBA14

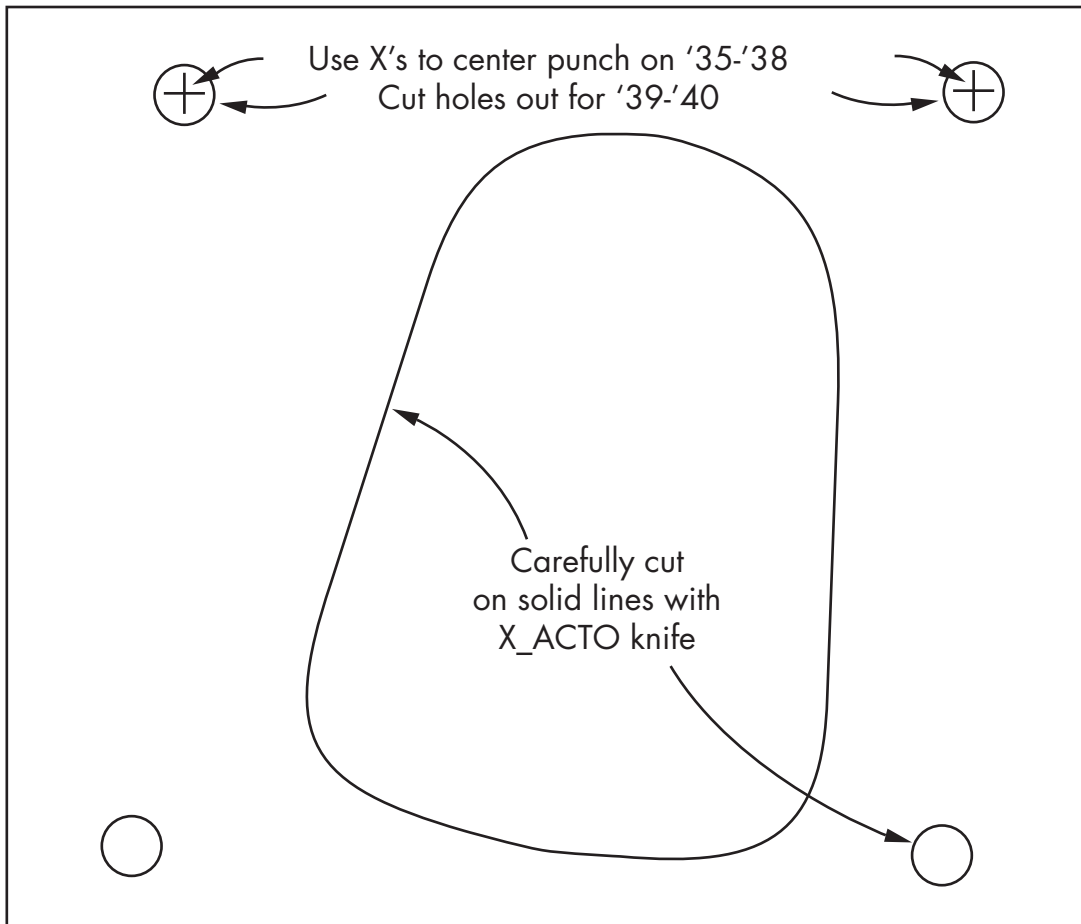
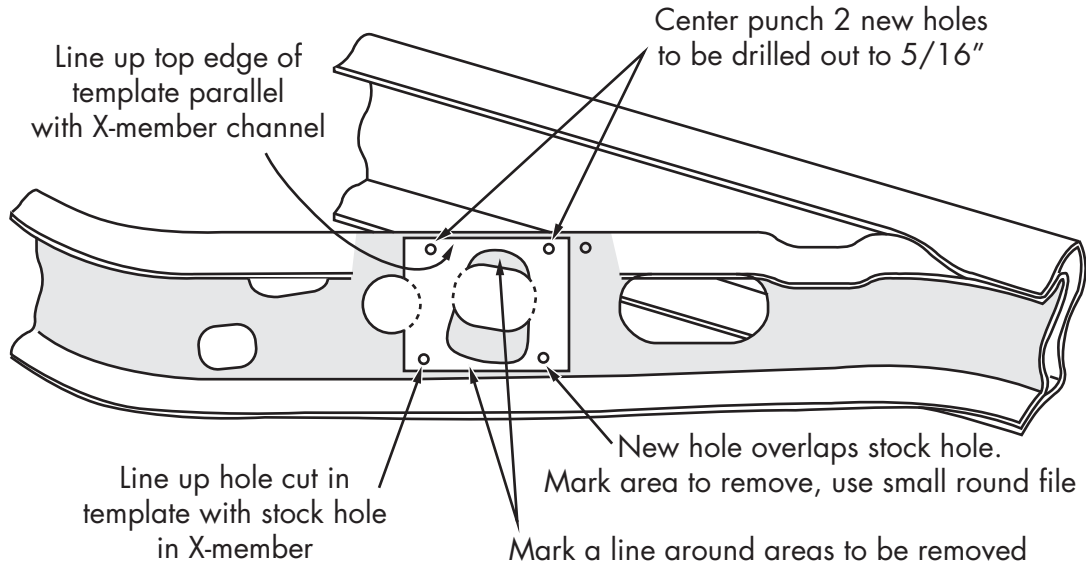
'42-'48 FORD BRAKE PEDAL ASSEMBLY

Mounting the '42-'48 Ford brake pedal assembly requires some minor cutting and redrilling. Using the template provided on the next page, and the instructions below, the pedal assembly is easily installed.



MASTER CYLINDER

HEXPBA14 - Template



MASTER CYLINDER

HEXBB

MASTER CYLINDER INSTALLATION INSTRUCTIONS

1. Make sure the mounting surface is clean.
2. Determine which type push rod bore is needed. There are two different style push rods that are commonly used. One is a shallow bore and can only be used with a brake booster. The shallow bore push rod will be below the mounting surface about 3/16". The other is a deep bore and should be used on all manual brake applications. The deep bore can also be used with a brake booster. The deep bore pushrod will extend about 1" beyond the mounting flange.
3. Configure the master cylinder push rod bore to match the pushrod. There is a special tool (MCDG) available to aid in adjusting the push-rod. The pushrod will not preload the master cylinder when properly adjusted.

Warning: Preloading the master cylinder will cause the brakes to drag and brake lock up.

Warning: It is unsafe to use a shallow bore master cylinder with manual brakes! There is a possibility that the brakes will fail if the pushrod falls out of the master cylinder bore.

4. Bench bleed the master cylinder. Hold the master cylinder level and fill with brake fluid. Connect one end of the plastic tubes to the outlet port on the master cylinder and submerge the other end of the tube in the brake fluid. Cycle the master cylinder until there is no more air visible through the plastic tubes.

5. Install the master cylinder on to the vehicle. Make certain that the push rod has not preloaded the master cylinder.

6. Remove the plastic tubes and connect the brake lines to the master cylinder.

7. Bleed the brakes.

