

# HEADER AND EXHAUST WRAP

## Product Installation Sheet



### Required Equipment

- Scissors or utility knife
- Dust Mask
- Safety Glasses
- Gloves
- Long Sleeves (optional)
- Spray Bottle or Bucket (optional)



**SAFETY GLASSES REQUIRED**



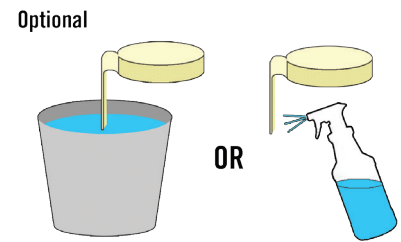
**GLOVES REQUIRED**



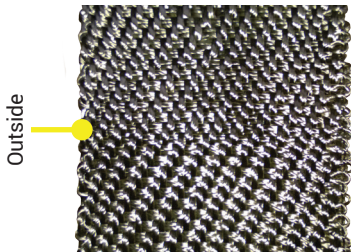
**DUST MASK REQUIRED**

### Installation Tips

- Wrapping headers and exhaust pipes requires patience. Go slow and take your time. Make the wrap as tight as possible – this will hold the wrap on the pipe better and retain the most heat in the system.
- **SOAKING** the wrap in a bucket of water is NOT necessary. You may spray the header/exhaust wrap with water. Spraying exhaust wrap with water as you work can make installation easier and also reduce the amount of fibers. It will not cause it to shrink, but it makes it stick to itself better.
- If you wish to unroll and pre-cut lengths of exhaust wrap, use the table below as a guide



For Lava Wrap and Cobra Skin Wrap only - Use the edge with surged (sewn) edge on the outside (visible) edge. This will reduce the risk of the wrap fraying and greatly improve durability.



Exhaust Pipe OD	1" Wide Wrap	2" Wide Wrap	Notes
1 3/8"	70" of wrap per foot	30" of wrap per foot	2" wide wrap not recommended
1 1/2"	76" of wrap per foot	33" of wrap per foot	Okay for 1" or 2" wide wrap
1 5/8"	82" of wrap per foot	35" of wrap per foot	Okay for 1" or 2" wide wrap
1 3/4"	88" of wrap per foot	38" of wrap per foot	Okay for 1" or 2" wide wrap
1 7/8"	95" of wrap per foot	41" of wrap per foot	Okay for 1" or 2" wide wrap
2"	101" of wrap per foot	44" of wrap per foot	Okay for 1" or 2" wide wrap
2 1/4"	114" of wrap per foot	49" of wrap per foot	Okay for 1" or 2" wide wrap
2 1/2"	126" of wrap per foot	54" of wrap per foot	1" wide wrap not recommended
2 3/4"	139" of wrap per foot	60" of wrap per foot	1" wide wrap not recommended
3"	151" of wrap per foot	65" of wrap per foot	1" wide wrap not recommended
3 1/4"	164" of wrap per foot	70" of wrap per foot	1" wide wrap not recommended
3 1/2"	176" of wrap per foot	76" of wrap per foot	1" wide wrap not recommended
3 3/4"	189" of wrap per foot	81" of wrap per foot	1" wide wrap not recommended
4"	201" of wrap per foot	87" of wrap per foot	1" wide wrap not recommended

\*Add approximately 8" of wrap per bend less than 90°; add 14" of wrap if bend is greater than a 90°.



# HEADER AND EXHAUST WRAP

## Product Installation Sheet



### Installation Steps

- 1** Start by folding 3/4" at the edge of the exhaust wrap. Make sure you tuck the 3/4" fold under the exhaust wrap and place on the pipe. This reduces fraying on the end of the wrap. (Figure 1)
- 2** Make one full initial wrap around the pipe, flush with flange or edge of pipe. Continue wrapping around the pipe at an angle eventually working to a 1/4" overlap of the wrap. Keep tension on the wrap as you coil it around the pipes. Wrap around the pipe roughly around pipe 3 to 4 more times and then secure wrap at flange with Thermal-Tie™, HP Tie Wire™, or hose clamp. (Figure 2)
- 3** After securing end, continue to wrap around pipe, using 1/4" overlap with each pass (Figure 2), and keeping tension on the exhaust wrap.
- 4** Every 6 or 6 passes (or coils) around pipe, use your hands to twist the wrap more tightly onto the pipe. If you soaked the wrap, you'll see water dripping out. Getting the water out is not the purpose for this; tightening the wrap to the exhaust pipe is.
- 5** If your primary tubes become so close together you cannot wrap them individually, wrap multiple pipes as one. Maintain the same 1/4" overlap. When wrapping the collector, start with a 1/4" of wrap overlapped on the wrapped primary tubes (Figure 3).
- 6** On the final pass around the pipe, fold over about 3/4" of the wrap, and tuck it underneath itself. Then secure the last coil of wrap with Thermal-Tie™, wire or hose-clamp (Figure 4).
- 7** Clean up and go have fun!

**PLEASE NOTE:** Your exhaust wrap will smoke when it gets hot for a short period after installation. The smoke is caused by binders (starches) burning off. It is non-toxic, and it is part of the curing process. Your wrap will not burst into flames. It is temporary.

Figure 1: The fold over

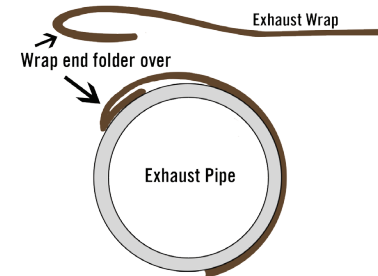


Figure 2:

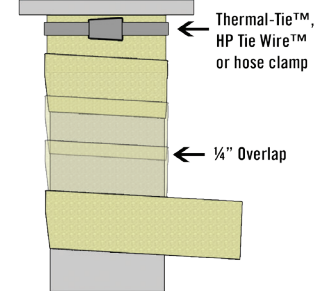


Figure 3:

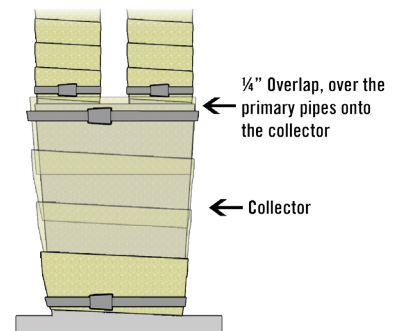
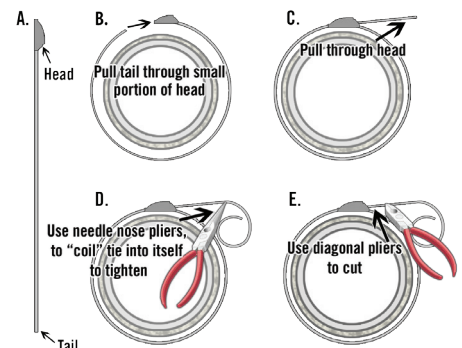


Figure 4:



© Heatshield Products, Inc.

