

HEADER AND EXHAUST WRAP

Product Installation Sheet



Required Equipment

- Scissors or utility knife
- Dust Mask
- Safety Glasses
- Gloves
- Long Sleeves (optional)
- Spray Bottle or Bucket (optional)



GLOVES REQUIRED



SAFETY GLASSES REQUIRED

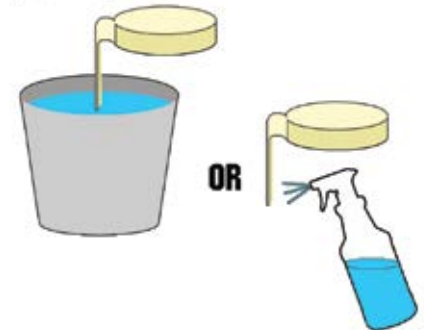


DUST MASK REQUIRED

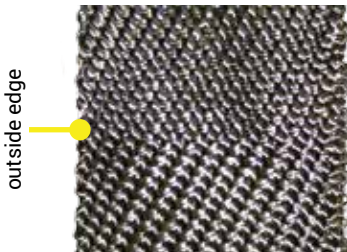
Installation Tips

- Wrapping headers and exhaust pipes requires patience. Go slow and take your time. Make the wrap as tight as possible – this will hold the wrap on the pipe better and retain the most heat in the system.
- Soaking the wrap in a bucket of water is NOT necessary. You may spray the header/exhaust wrap with water (Figure 1). Spraying exhaust wrap with water as you work can make installation easier and also reduce the amount of fibers. It will not cause it to shrink, but it makes it stick to itself better.
- If you wish to unroll and precut lengths of exhaust wrap, use the table below as a guide (please note table is for ¼" overlap; not for 50% overlap applications).
- If you are installing wrap on a motorcycle or powersports application, we recommend a 50% overlap instead of the ¼" overlap during the installation process.

Figure 1: Optional



For Lava Wrap and Cobra Skin Wrap only - Use the edge with surged (sewn) edge on the outside (visible) edge. This will reduce the risk of the wrap fraying and greatly improve durability.



Exhaust Pipe OD	1" Wide Wrap	2" Wide Wrap	Notes
1 3/8"	70" of wrap per foot	30" of wrap per foot	2" wide wrap not recommended
1 1/2"	76" of wrap per foot	33" of wrap per foot	Okay for 1" or 2" wide wrap
1 5/8"	82" of wrap per foot	35" of wrap per foot	Okay for 1" or 2" wide wrap
1 3/4"	88" of wrap per foot	38" of wrap per foot	Okay for 1" or 2" wide wrap
1 7/8"	95" of wrap per foot	41" of wrap per foot	Okay for 1" or 2" wide wrap
2"	101" of wrap per foot	44" of wrap per foot	Okay for 1" or 2" wide wrap
2 1/4"	114" of wrap per foot	49" of wrap per foot	Okay for 1" or 2" wide wrap
2 1/2"	126" of wrap per foot	54" of wrap per foot	1" wide wrap not recommended
2 3/4"	139" of wrap per foot	60" of wrap per foot	1" wide wrap not recommended
3"	151" of wrap per foot	65" of wrap per foot	1" wide wrap not recommended
3 1/4"	164" of wrap per foot	70" of wrap per foot	1" wide wrap not recommended
3 1/2"	176" of wrap per foot	76" of wrap per foot	1" wide wrap not recommended
3 3/4"	189" of wrap per foot	81" of wrap per foot	1" wide wrap not recommended
4"	201" of wrap per foot	87" of wrap per foot	1" wide wrap not recommended

*Add approximately 8" of wrap per bend less than 90°; add 14" of wrap if bend is greater than a 90°.

HEADER AND EXHAUST WRAP



Product Installation Sheet

Installation Steps

- 1 Make one initial wrap around the pipe, flush with flange, then wrap around pipe 3 more times at an angle, keeping tension on the wrap, and then secure wrap at flange with Thermal-Tie™ (Figure 4) or hose clamp.
- 2 After securing end, continue to wrap around pipe, using ¼" overlap with each pass (Figure 2), and keeping tension on the exhaust wrap.
- 3 Every 4 or 5 passes (or coils) around pipe, use your hands to twist the wrap more tightly onto the pipe. If you soaked the wrap, you'll see water dripping out. Getting the water out is not the purpose for this; tightening the wrap is.
- 4 If your primary tubes become so close together you cannot wrap them individually, wrap multiple pipes as one, while using the same ¼" overlap. When wrapping the collector, start with a ¼" of wrap overlapped on the wrapped primary tubes (Figure 3).
- 5 On the final pass around the pipe, fold over about 3/4" of the wrap, and tuck it underneath itself. Then secure the last coil of wrap with Thermal-Tie™, wire or hose-clamp (Figure 4).
- 6 Clean up and go have fun!

Figure 2:

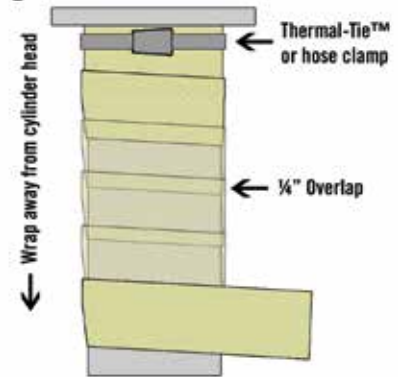


Figure 3:

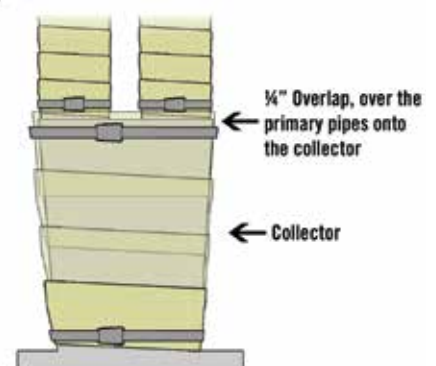
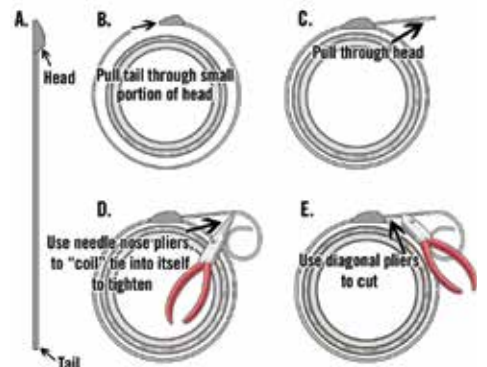


Figure 4:



PLEASE NOTE:

Your exhaust wrap will smoke when it gets hot for a short period after installation. The smoke is caused by binders (starches) burning off. It is non-toxic, and it is part of the curing process. Your wrap will not burst into flames. It is temporary.