



Heatshield Armor™



Looking for something easier to install on your pipes than exhaust wrap? Check out our Heatshield Armor™, which can reduce radiant heat from your exhaust pipes by up to 70 percent!

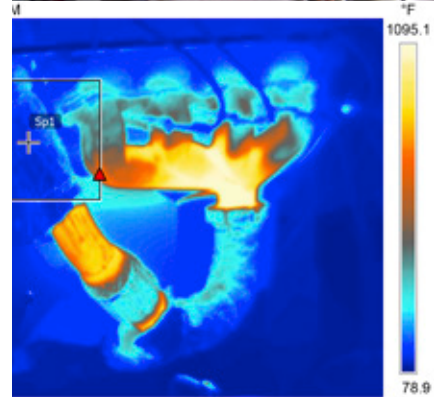
The outer armor of Heatshield Armor™ is resistant to the elements, giving the shield a long life. We use either a ¼-inch or ½-inch BioCool thermal barrier inner pad, bonded to a heavy-duty foil outer layer using a proprietary process. This makes it capable of withstanding 1,800 degrees F continuously, which allows this heatshield to be placed directly on exhaust systems, turbo manifolds, downpipes and diesel particulate filters (DPF). BioCool is a non-caustic, non-flammable thermal barrier. It does not cause itching and won't smoke or smell the first time it is heat-cycled. This makes it a far superior insulator compared to the clamp-on heatshields that allow heat to escape because they are set above the pipe and not directly insulating it. It is flexible, easy to cut (you can use a pair of heavy-duty scissors) and easy to install, and can be cleaned after installation.

A distinct Heatshield Armor™ advantage over an all-alloy exhaust heatshield conduction with one hot side and one cold side: There is no metal-to-metal contact layer. Heatshield Armor™ can even be repaired with Heatshield Armor™ Weld tape.

Heatshield Armor™ is available in two thicknesses: ¼-inch for most naturally aspirated applications and ½-inch for forced-induction and racing applications.

FEATURES

- Reduces radiant heat up to 70%
- May be cleaned after installation
- Water- and chemical-resistant
- Reduces underhood temperatures up to 60%
- 0.003-inch-thick armor layer



PART NO.	DESCRIPTION
170001	¼" thick x 6" W x 5' L
170002	¼" thick x 6" W x 10' L
170102	¼" thick x 1' W x 2' L
170103	¼" thick x 1' W x 3' L
170104	¼" thick x 1' W x 4' L
170105	¼" thick x 1' W x 5' L

PART NO.	DESCRIPTION
170202	¼" thick x 2' W x 2' L
175102	½" thick x 1' W x 2' L
175103	½" thick x 1' W x 3' L
175104	½" thick x 1' W x 4' L
175105	½" thick x 1' W x 5' L
175110	½" thick x 18" W x 4' L

PART NO.	DESCRIPTION
175111	½" thick x 18" W x 5' L
175115	½" thick x 18" W x 10' L
175202	½" thick x 2' W x 2' L
175304	½" thick x 3' W x 4' L
175325	½" thick x 3' W x 25' L

Heatshield Armor™ Kits

Heatshield Armor™ kits feature the same great benefits as the Heatshield Armor™ and include our heavy-duty 5/16-inch-wide Thermal-Tie™.

PART NO.	DESCRIPTION
171005	¼" thick x 1' W x 5' L with 6 ties
176001	½" thick x 1' W x 3' L with 4 ties
176005	½" thick x 1' W x 5' L with 6 ties

