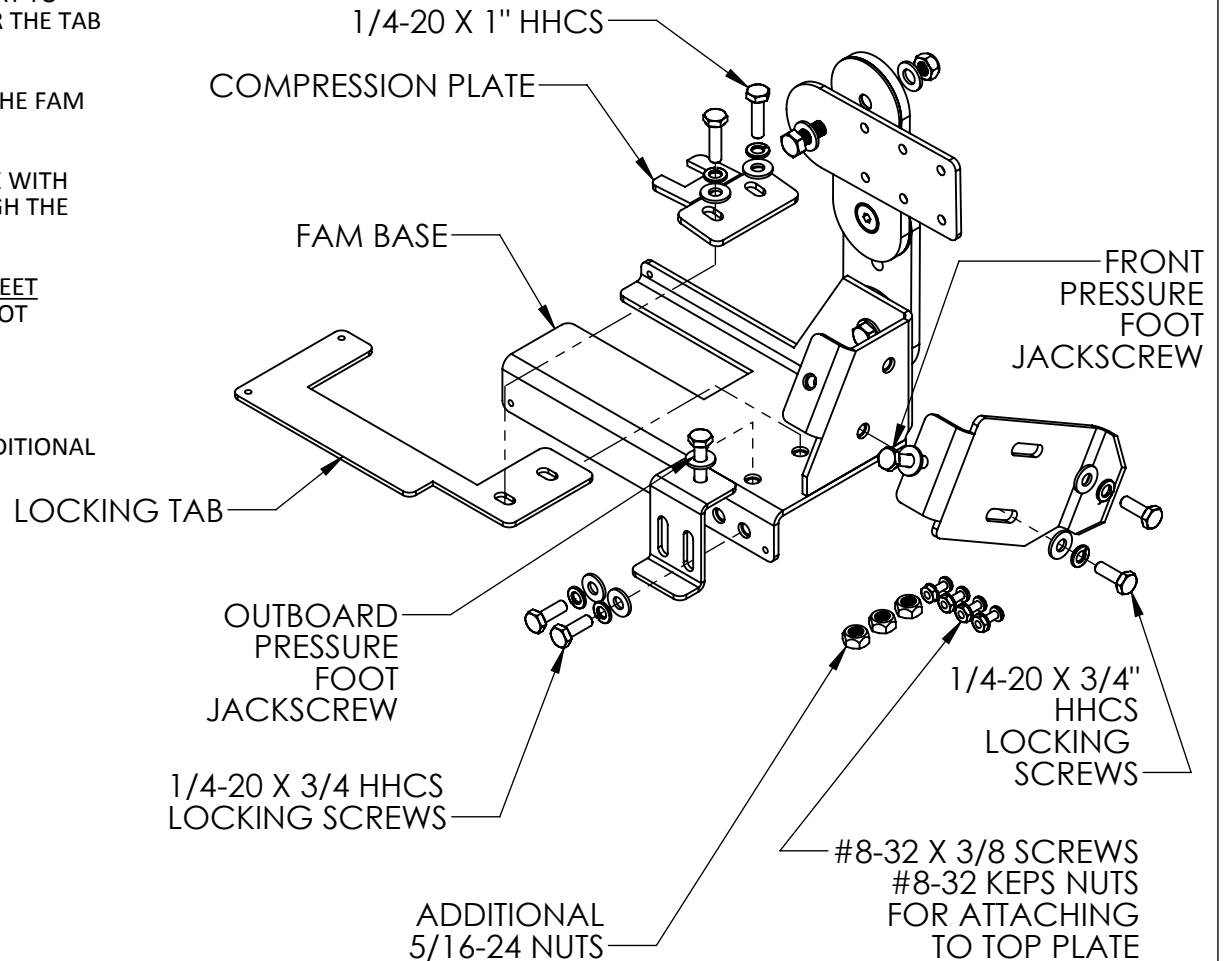


## INSTALLATION:

1. REMOVE TRIM AROUND INBOARD PASSENGER SEAT MOUNT
2. FROM THE PASSENGER SIDE FOOTWELL, SLIDE THE FAM BASE UNDER THE INBOARD SEAT MOUNT.
3. SLIDE THE LOCKING TAB BETWEEN THE SEAT RAIL AND THE FAM BASE TO LOCK THE FAM BASE INTO POSITION. (IT MAY BE NECESSARY TO PUSH DOWN ON THE FAM BASE TO GIVE ENOUGH ROOM FOR THE TAB TO SLIDE UNDER THE RAIL)
4. ALIGN THE HOLES IN THE LOCKING TAB WITH THE HOLES IN THE FAM BASE
5. SLIDE COMPRESSION PLATE INTO THE SEAT RAIL AND SECURE WITH 1/4-20 X 1" HHCS, LOCK WASHER AND FLAT WASHER THROUGH THE COMPRESSION PLATE AND THE LOCKING TAB.
6. MAKE SURE THAT THE LOCKING SCREWS ON THE PRESSURE FEET ALLOW THE FEET TO SLIDE, AND TIGHTEN EACH PRESSURE FOOT JACKSCREW UNTIL THE FAM BASE IS STABLE.
7. TIGHTEN THE LOCKING SCREWS.
9. IF REARRANGEMENT OF THE ARM ASSEMBLY IS DESIRED, ADDITIONAL 5/16-24 LOCKING NUTS ARE INCLUDED



ITEM NO.	Def ault /QT Y.	PART NUMBER	DESCRIPTION
1	1	10-006037	BRKT, FLEX ARM MOUNT, TOP
2	1	10-006697	BASE, FLEX ARM MOUNT, '15 TAHOE
3	1	10-006784	TAB, LOCKING, TAHOE FAM
4	1	10-006841	BRKT, FOOT, TAHOE FAM
5	1	10-006842	BRKT, FAM KEY
6	1	30-006083	ARM ASSEMBLY, FLEX ARM MOUNTS
8	4	GSM30027	NUT 8-32 KEPS ZP
9	5	GSM30160	HRDW,NUT,LOCK,5/16-24,ZINC,SP
10	8	GSM31005	WASHER, 1/4 FLAT ZP, BLACK
11	4	GSM31006	WASHER, 5/16" FLAT, SAE ZP
12	2	GSM31020	WASHER 5/16 x 2 FENDER ZP
13	6	GSM31026	WASHER 1/4 LOCK ZP
14	4	GSM33001	SCREW 1/4-20 x 3/4" HHCS ZP
15	3	GSM33002	SCREW 1/4-20 X 1 HHCS ZP
16	1	GSM33004	SCREW 1/4-20 X 1 1/2 HHCS ZP
17	4	GSM33540	SCREW 8-32 X 3/8 PTHMS ZP
18	2	GSM33807	HRDW,SCRW,5/16-24X1 GR5,ZPS
19	1	10-006868	PRESSURE FOOT, SIDE, TAHOE FAM

**HAVIS** HAVIS, INC.

TITLE:  
INSTALLATION, FLEX ARM MOUNT, 14  
SILVERADO, 15 TAHOE

**DO NOT SCALE DRAWING**

SIZE <b>A</b>	DWG. NO. C-FAM-113-INST	REV 12-14
WEIGHT (LB): 6.84	SCALE: 1:4	SHEET 1 OF 1

## INSTALLATION INSTRUCTIONS

PROJECT #	REV.	DESCRIPTION	DATE	BY	CHECKED BY
1349	8-14	CHG LETTER REV. TO DATE	8/12/2014	KDAVIS	

### INSTALLATION OF C-FAM-201 PRIOR TO VEHICLE INSTALLATION (PKG-FAM-1XX ONLY):

1. ASSEMBLE FLEX MOUNT (C-FAM-201), SCREWING SHAFT INTO MOUNTING BASE AS SHOWN IN ILLUSTRATION. SECURE WITH INCLUDED 10-32 SOCKET HEAD CAP SCREW AND INCLUDED ALLEN WRENCH (NOT SHOWN)
2. ATTACH FLEX MOUNT TO BRACKET WITH 3 OF 10-32 X 3/8"SCREWS AND KEPS NUTS. **NOTE:** ON C-FAM-101 NO NUTS RE REQUIRED, 10-32 SCREWS ARE 1/4" LENGTH.
3. INSTALL INCLUDED CAPS AFTER TIGHTENING HARDWARE (IF DESIRED).

### VEHICLE INSTALLATION (EXCEPT C-FAM-101):

4. REMOVE PLASTIC SEAT TRIM IF NEEDED.
5. REMOVE PASSENGER SIDE INBOARD FRONT SEAT BOLT.
6. SLIDE BASE PLATE IN BETWEEN FLOOR AND SEAT BRACKET OR PLACE OVER SEAT BOLT HOLE AS NEEDED.
7. REINSTALL OEM SEAT BOLT, OR REPLACEMENT BOLT AND SPACER (IF SUPPLIED) AND TIGHTEN TO VEHICLE MANUFACTURER'S TORQUE SPECIFICATION.

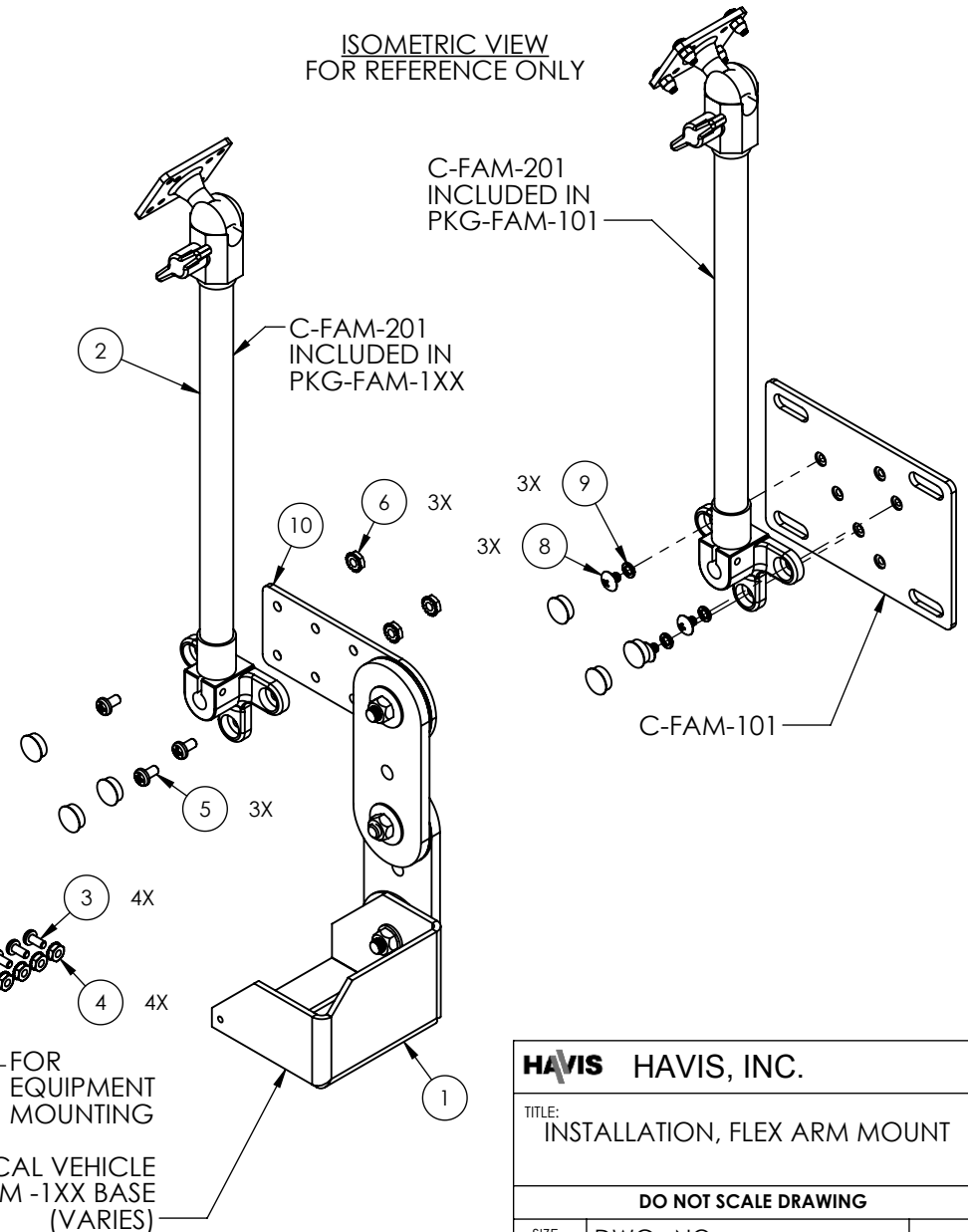
### EQUIPMENT INSTALLATION

1. ATTACH EQUIPMENT TO UPPER BALL SWIVEL OF FLEX MOUNT USING EITHER SUPPLIED #8 SCREWS AND/OR NUTS OR HARDWARE SUPPLIED WITH THE EQUIPMENT.
2. POSITION EQUIPMENT AS DESIRED.

### INSTALLATION TIPS/ NOTES:

1. SWIVEL DISCS CAN BE RECONFIGURED IF DESIRED, BUT NEW CONICAL LOCKING NUTS SHOULD BE USED IF ORIGINAL NUTS HAVE BEEN REMOVED.
2. COMPLETELY TIGHTENING THE LOWER DISCS (TO LOCK IN POSITION) IS RECOMMENDED TO MINIMIZE SWIVEL/ HINGE MOVEMENT.
3. BALL MOUNT HOLE PATTERN FITS 1.19 X 1.50 (30MM X 38MM) AMPS HOLE PATTERN.
4. C-FAM-201 CAN ATTACH TO EITHER SIDE OF PLATE (AS DESIRED)

ISOMETRIC VIEW  
FOR REFERENCE ONLY



ITEM NO.	QTY.	HK	PART NUMBER	DESCRIPTION
1	1		C-FAM-1XX	BRKT, FLEX ARM MOUNT, 2013 FUSION/ INSE
2	1	1	C-FAM-201	FLEX ARM MOUNT, 14" LG
3	4	4	GSM33540	SCREW 8-32 X 3/8 PTHMS ZP
4	4	4	GSM30027	NUT 8-32 KEPS ZP
5	3	3	GSM34096	SCREW, 10-32 X 3/8 PPHMS SS
6	3	3	GSM30028	NUT 10-32 KEPS ZP, BLK
7	5	3	GSM30160	HRDW,NUT,LOCK,5/16-24,ZINC,SP
8	3	3	GSM33320	HRDW,SCRW,10-32x1/4,PTHMS,ZINC, (FAM-101 ONLY)
9	3	3	GSM31025	WASHER #10 LOCK ZP (FAM-101 ONLY)
10	1	1	10-006037	BRKT, FLEX ARM MOUNT, TOP

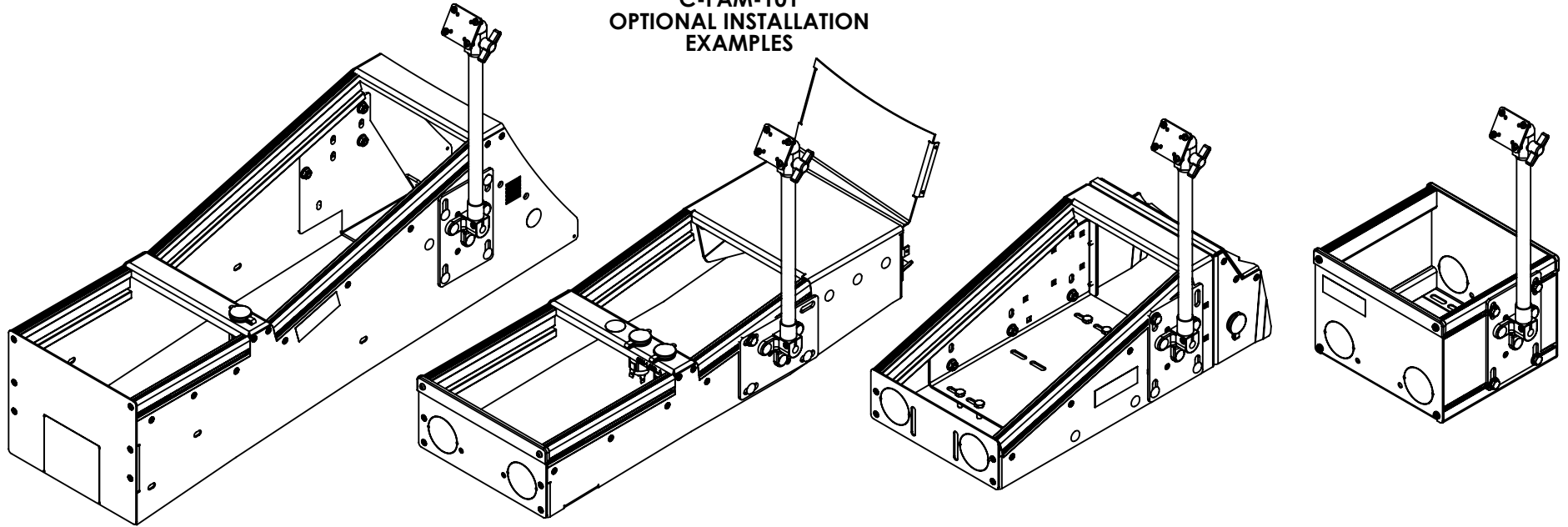
**HAVIS** HAVIS, INC.

TITLE:  
INSTALLATION, FLEX ARM MOUNT

DO NOT SCALE DRAWING

SIZE	DWG. NO.	REV
<b>A</b>	C-FAM-INST	8-14
WEIGHT (LB): 2.77	SCALE: 1:4	SHEET 1 OF 2

**C-FAM-101  
OPTIONAL INSTALLATION  
EXAMPLES**

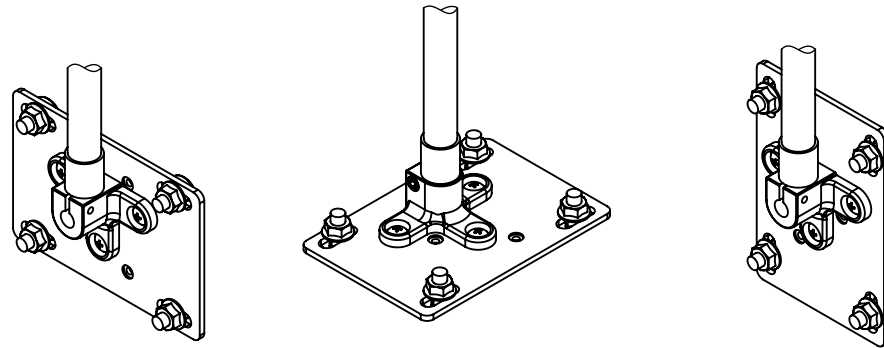


**C-FAM-101 UNIVERSAL FLEX ARM MOUNT  
CONSOLE INSTALLATION:**

1. MOST HAVIS CONSOLES HAVE A MATCHING MOUNTING BOLT PATTERN ON THE PASSENGER SIDE. PLACE THE FLEX ARM MOUNTING PLATE ON THE SIDE OF THE CONSOLE AND FIND A MATCHING MOUNTING PATTERN.
2. IN SOME CONSOLES, IT MAY BE NECESSARY TO USE ONE OF THE NUTS PREINSTALLED IN THE SIDE OF THE TOP RAIL FOR THE TOP REAR FASTENER. INSTALLER MAY NEED TO DRILL ONE OR MORE MOUNTING HOLES IN THE EVENT THAT MATCHING PREDRILLED HOLES IN THE CONSOLE CANNOT BE FOUND.
3. SECURE C-FAM-101 MOUNTING PLATE TO SIDE OF CONSOLE WITH 1/4-20 X 3/4" LONG CARRIAGE BOLTS AND FLANGED NUTS.

**EQUIPMENT INSTALLATION:**

1. ATTACH EQUIPMENT TO UPPER BALL SWIVEL OF FLEX MOUNT USING EITHER SUPPLIED #8 SCREWS AND/OR NUTS OR HARDWARE SUPPLIED WITH THE EQUIPMENT.
2. POSITION EQUIPMENT AS DESIRED.



**HAVIS** HAVIS, INC.

TITLE:  
INSTALLATION, FLEX ARM MOUNT

**DO NOT SCALE DRAWING**

SIZE <b>A</b>	DWG. NO. C-FAM-INST	REV 8-14
WEIGHT (LB): 0.88	SCALE: 1:4	SHEET 2 OF 2