



Vantra TRAILER

The first special trailer tire of exceptional durability and stability.



Product Feature (Sales Point)

The new special trailer tire delivers exceptional durability and stability under heavy-duty conditions.

- ① Improved traction control in all road condition with optimized pattern design
- ② Enhanced durability and stability in heavy-duty condition with advanced tire structure technology
- ③ Highway speed rated with a N-rating (87 mph) and M-rating (81 mph)
- ④ Size availability for most popular trailer application

Vantra TRAILER

ST01

| M-Code | Size | LI | Ply Rating | Measuring Rim | Max. Air (PSI) | | Max Load (lbs) | | Overall Diameter (Inch) | Section Width (Inch) | Tread Width (Inch) | Tread Depth (32nds) | Speed Limit (MPH) | Weight (lbs) |
|---------|-------------|-----------|------------|---------------|----------------|----|----------------|------|-------------------------|----------------------|--------------------|---------------------|-------------------|--------------|
| | | | | | S | D | S | D | | | | | | |
| 2021432 | ST175/80R13 | 91/87 N | 6 (C) | 5.0 | 50 | 50 | 1360 | 1200 | 24.1 | 7.0 | 5.5 | 7.7 | 87 | 21 |
| 2021433 | ST185/80R13 | 94/89 N | 6 (C) | 5.0 | 50 | 50 | 1480 | 1280 | 24.7 | 7.1 | 5.8 | 7.7 | 87 | 22 |
| 2021434 | ST205/75R14 | 105/101 N | 8 (D) | 5.5 | 65 | 65 | 2040 | 1820 | 26.2 | 7.9 | 6.5 | 7.7 | 87 | 28 |
| 2021435 | ST215/75R14 | 108/103 N | 8 (D) | 6.0 | 65 | 65 | 2200 | 1930 | 26.7 | 8.5 | 6.8 | 7.7 | 87 | 30 |
| 2021436 | ST205/75R15 | 107/102 N | 8 (D) | 5.5 | 65 | 65 | 2150 | 1870 | 27.1 | 8.0 | 6.5 | 7.7 | 87 | 30 |
| 2021437 | ST225/75R15 | 117/112 N | 10 (E) | 6.0 | 80 | 80 | 2830 | 2470 | 28.3 | 8.9 | 7.1 | 7.7 | 87 | 34 |
| 2021438 | ST235/80R16 | 123/119 N | 10 (E) | 6.5 | 80 | 80 | 3420 | 3000 | 30.9 | 9.5 | 7.4 | 7.7 | 87 | 44 |
| 2021439 | ST235/85R16 | 125/121 N | 10 (E) | 6.5 | 80 | 80 | 3640 | 3200 | 31.7 | 9.5 | 7.4 | 7.7 | 87 | 46 |
| 2021440 | ST255/85R16 | 129/125 N | 10 (E) | 7.0 | 80 | 80 | 4080 | 3640 | 33.1 | 10.3 | 8.0 | 7.7 | 87 | 52 |

Vantra TRAILER TH31

TH31

| M-Code | Size | LI | Ply Rating | Measuring Rim | Max. Air (PSI) | | Max Load (lbs) | | Overall Diameter (Inch) | Section Width (Inch) | Tread Width (Inch) | Tread Depth (32nds) | Speed Limit (MPH) | Weight (lbs) |
|---------|-------------|-----------|------------|---------------|----------------|-----|----------------|------|-------------------------|----------------------|--------------------|---------------------|-------------------|--------------|
| | | | | | S | D | S | D | | | | | | |
| 3003734 | ST235/85R16 | 132/127 M | 14 (G) | 6.5 | 110 | 110 | 4400 | 3860 | 31.6 | 9.3 | 7.1 | 12 | 81 | 61 |
| 3003760 | ST235/80R16 | 129/125 M | 14 (G) | 6.5 | 110 | 110 | 4080 | 3640 | 30.8 | 9.2 | 7.1 | 12 | 81 | 60 |
| 3003761 | ST225/90R16 | 129/125 M | 14 (G) | 6 | 110 | 110 | 4080 | 3640 | 31.8 | 8.6 | 6.2 | 12 | 81 | 59 |

Trailers

* Special trailer tires are engineered specifically for use like following trailers



Fifth wheel trailer

Travel trailer

Camping trailer

Carry-on trailer

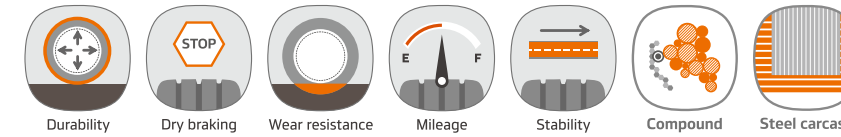
Boat trailer

Horse trailer

VanTRa TRAILER



VanTRa TRAILER TH31



Design Features and Technology

Pattern design for improved traction control in all road condition.

High Stiffness Pattern Block



Pattern block ratio design optimized for heavy loads condition.

Decoupling Groove



Optimized decoupling groove prevent heat generation in the shoulder part due to heavy loads.

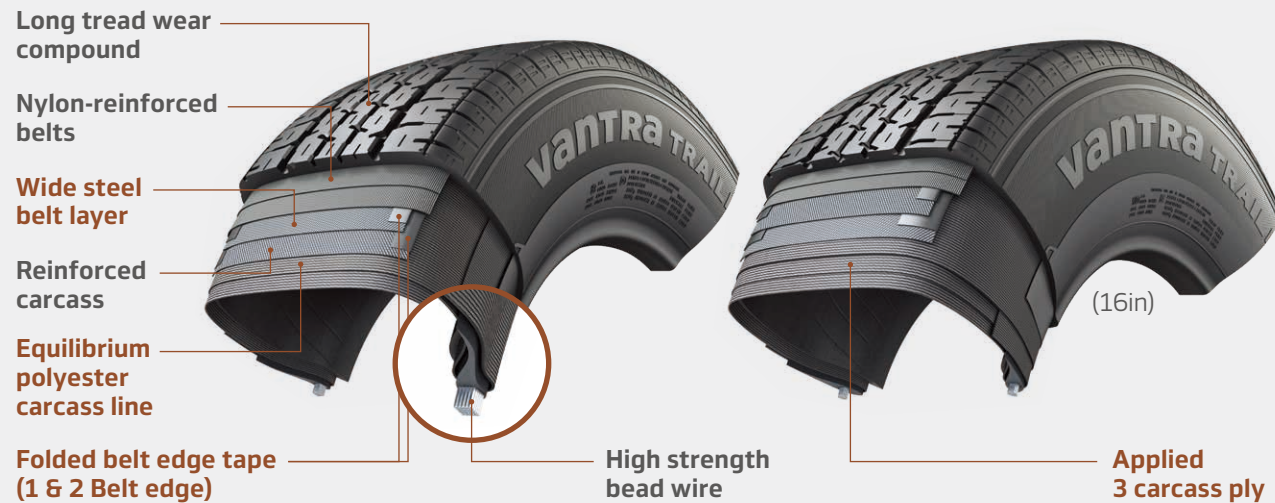
Groove Stiffness



Each groove design with high stiffness for heavy loads.

Tire Structure

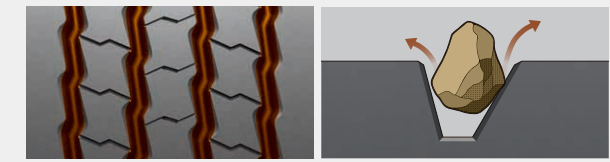
Tire structure for enhanced durability and stability in heavy-duty condition.



Design Features and Technology

Main Zigzag Groove

Provides excellent traction and water drainage under various road conditions. Asymmetric groove helps eject stones.



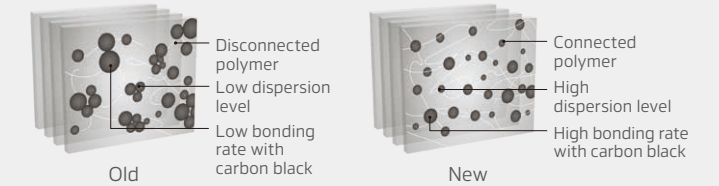
Groove Slant Design



Slanted groove design helps to prevent chunking.

New Compound Mixing System for Enhancing Durability

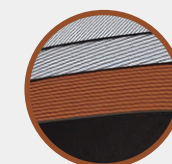
The new mixing system, innovation mixing system, (IMS), minimizes disconnection of polymer chains and oxidation.



Tire Structure

Belt structure

Minimized motion of belt for low heat generation.



Steel Carcass Structure

Minimized tire deformation with optimized foot shape offers control on uneven surfaces.



Improved bead
Minimum bead mobility for enhancing durability.