

# DH07

Structurally Designed for Improved Durability, Ride, and Handling Performance

### Belt structure

Minimized motion of belts for reduced heat generation.

### Carcass

Optimized carcass structure for better ride and handling.

### Improved bead

Optimized bead profile for superior retreadability.



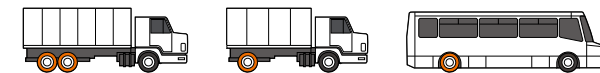
## Sizes & Specifications

DH07

S-Code	Size	Ply Rating	Type	Measuring Rim	Max. Air (psi)		Max. Load (lbs)		Overall Diameter (inch)	Section Width (inch)	Tread Width (inch)	Tread Depth (inch/32nds)	Revs /Mile	SLR (inch)	Speed Limit	Weight (lbs)
					S	D	S	D								
3001929	225/70R19.5	14	T/L	6.75	110	110	3,970	3,750	32.4	8.8	7.2	18	643	15.1	87	68
3002314	245/70R19.5	16	T/L	6.75	120	120	4,805	4,540	33.5	9.4	8.1	19	621	15.5	81	76
3002313	265/70R19.5	14	T/L	7.50	110	110	5,070	4,675	34.5	10.2	8.7	20	604	16.1	81	88

\* Tire construction and material specifications subject to change without notice or obligation.

## Recommended / Available Vehicle & Position



⊙ Recommended position

# DH07

Optimized design for regional haul pick-up & delivery drive position



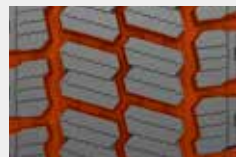
## Optimized design for regional haul pick-up & delivery drive position



Kontrol Technology is Hankook Tire's technology philosophy which reflects how the tire should perfectly control the interaction between the driver, the vehicle and the road while in motion. It is implemented to ensure Hankook Tire provides the greatest benefits and driving experiences to customers in terms of safety, driving comfort, handling, performance and environmental friendliness. The AH12 is an example of a tire that embodies Kontrol Technology.

### Significant Design Features

#### Wider 3 channel zigzag groove

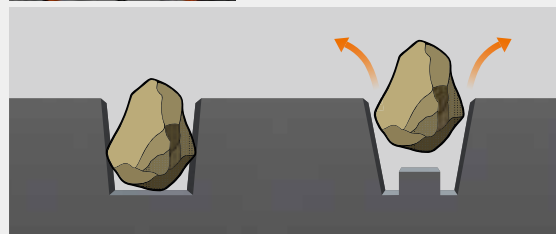


Wider grooves prevent stone drilling & the tread design provides self cleaning.

#### Stone ejector



Stone ejector technology prevents stone drilling and tire tearing.



Conventional

DH07

#### Optimized shoulder design



Unique shoulder block & lug design protects against cracking from external shocks.

#### Multiple 3-dimensional kerf design



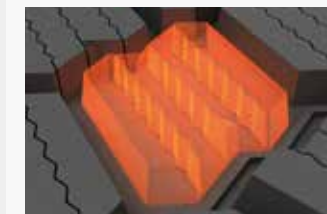
Provides longer mileage and maximum traction.



### Technology and Benefits

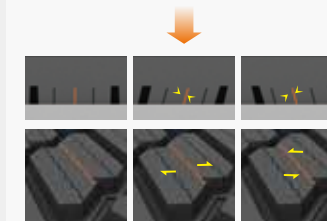
#### Multi 3D kerf technology

Lateral / tangential zigzag-type full-depth kerfs generate binding forces between blocks



**3D kerf**  
Lateral / tangential direction.

Zigzag type :  
Applying full depth kerfs helps maintain a binding force between blocks.



**Controlled wear and tear**  
→ Improves mileage.

**Full depth kerf applied**  
→ Improves traction during the whole life of the tire.

#### Test result

