


















Installation Guide

Part # TBG114035

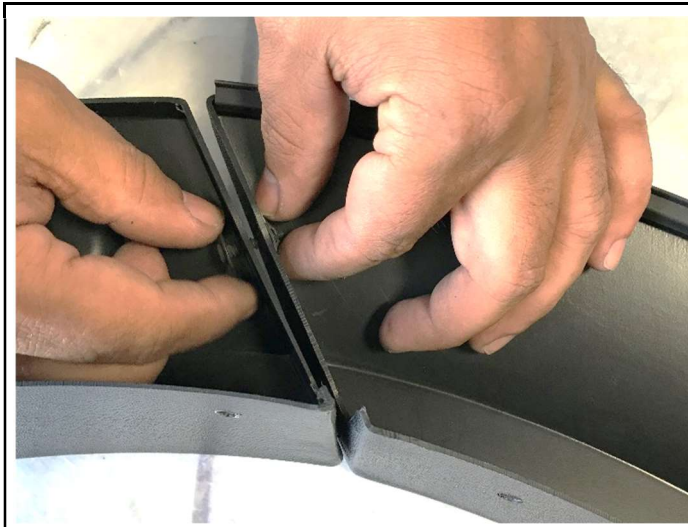
Subaru Outback 2020+ Fender Flare Install Instructions

Fender Flare Installation Disclaimer	Hardware Kit Components								
<ul style="list-style-type: none"> Failure to install this product according to these instructions will invalidate the warranty. This includes, but is not limited to using alternative installation methods, hardware, or materials. This product uses double sided tape for some components. It is VERY IMPORTANT to install the flare on a clean vehicle in the proper temperature. For best adhesion, install must be performed in 60° - 85°F and remain for 12-24 hours before being driven. It is highly recommended to use the supplied alcohol wipe to remove any wax or sealant from the vehicle paint where all taped components will be making contact. DO NOT USE Loctite®, SuperGlue®, or similar products on the hardware or the product. Verify the fit of the product to vehicle prior to installation. If painting is desired (not required) it must be done prior to installing product on vehicle. Clean outer surface with a good grade degreaser. DO NOT USE LACQUER THINNER OR ENAMEL REDUCER AS A DEGREASER. Wipe outer surface thoroughly with a tack rag prior to paint. Application of plastic adhesion promoter for TPO (thermoplastic polyolefin) plastic as per your paint system manufacturer's recommendations is required. Paint flares using a high-quality enamel or polyurethane automotive paint. Do not paint edge trim. Using larger tires may increase area required to turn the vehicle. Some wheel and tire combinations may require further modification to prevent tire from contacting flare or inner fender liner while turning. All exposed fasteners and bare metal should be treated with rust resistant paint BEFORE installing flares. This product may interfere with existing decals on vehicle. Though not required, if you wish, remove decals prior to installation of flares. Care & Cleaning: Do not use any harsh abrasive detergents. <p style="margin-top: 20px;">PLEASE NOTE</p> <p>Dirt and debris can become lodged between the product and the body, causing scratching and paint wear from vibration. Trails by Grimmspeed is not responsible for any damage, and the installation of this product is done with the buyer's understanding that this scratching and paint wear may occur.</p>	<table border="1" style="width: 100%; border-collapse: collapse;"> <tr> <td style="text-align: center; padding: 10px;">  EDGE TRIM </td> <td style="text-align: center; padding: 10px;">  SPRING NUT x8 </td> </tr> <tr> <td style="text-align: center; padding: 10px;">  SHEET METAL CLIP x 4 (NO GAP) </td> <td style="text-align: center; padding: 10px;">  PLASTIC-PANEL CLIP x 22 (SMALL GAP) </td> </tr> <tr> <td style="text-align: center; padding: 10px;">  SCREW x 36 </td> <td style="text-align: center; padding: 10px;">  DOOR SPACING TOOL x 2 </td> </tr> <tr> <td colspan="2" style="text-align: center; padding: 10px;">  SM ALCOHOL WIPES x 4 LG ALCOHOL WIPES x 2 </td> </tr> </table>	 EDGE TRIM	 SPRING NUT x8	 SHEET METAL CLIP x 4 (NO GAP)	 PLASTIC-PANEL CLIP x 22 (SMALL GAP)	 SCREW x 36	 DOOR SPACING TOOL x 2	 SM ALCOHOL WIPES x 4 LG ALCOHOL WIPES x 2	
 EDGE TRIM	 SPRING NUT x8								
 SHEET METAL CLIP x 4 (NO GAP)	 PLASTIC-PANEL CLIP x 22 (SMALL GAP)								
 SCREW x 36	 DOOR SPACING TOOL x 2								
 SM ALCOHOL WIPES x 4 LG ALCOHOL WIPES x 2									
<h3 style="text-align: center;">Installation Tools Required</h3> <ol style="list-style-type: none"> 1. #2 Phillips screwdriver (stubby preferred) 2. 5/16" / 8mm Socket 3. 7/16" / 12mm Socket 4. Flathead screwdriver 5. Drill with 5/16" Bit 6. Plastic trim prybar 7. Grease pencil / paint marker 8. Microfiber cloth or alcohol wipe (4 small wipes provided for decal application; 2 large wipes provided for door piece application) 									

Installation Guide

Part # TBG114035

FRONT FENDER FLARE INSTALLATION



STEP 1: Assemble front main flare to bumper flare piece using supplied spring nuts and screws in two (2) places. Tighten with Phillips screwdriver.

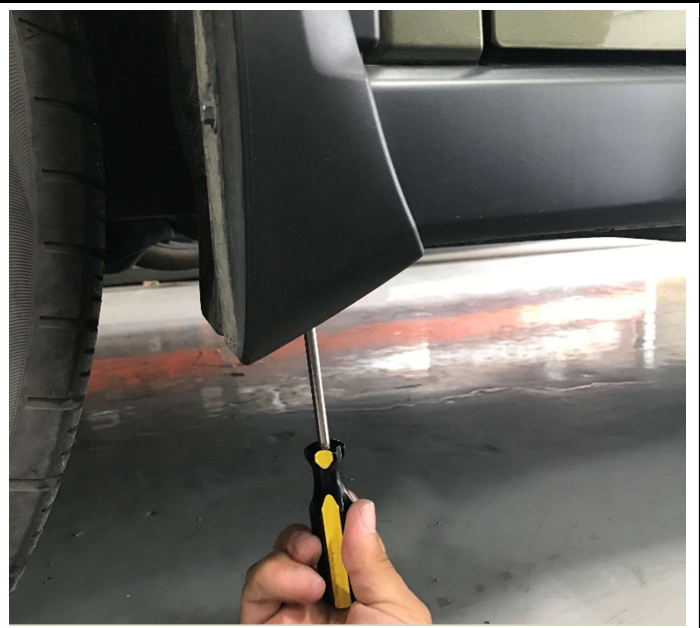


STEP 2: Install supplied edge trim on assembled front flare, cutting a "U" notch when you reach the main/bumper piece assembly connection point.



STEP 3: If vehicle is not equipped with factory mud flaps, skip to **STEP 6**.

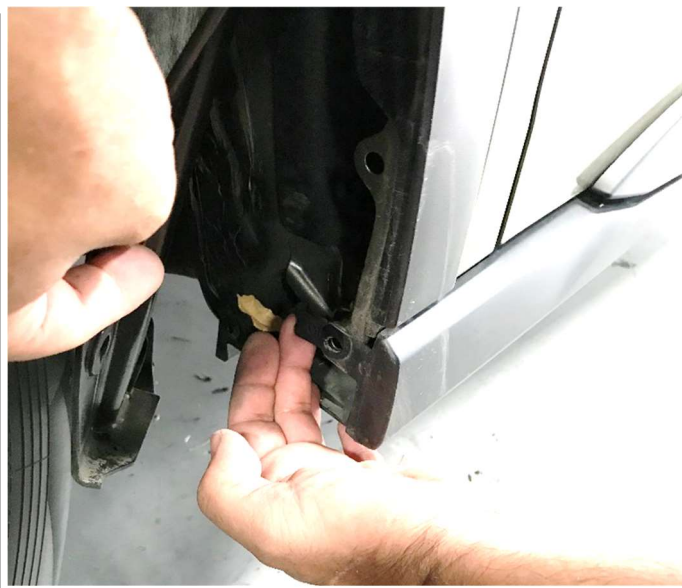
If vehicle is equipped with factory mud flaps: Using a 5/16" / 8mm socket or Phillips screwdriver, remove three (3) factory bolts from inside wheel well. Retain two (2) factory bolts for installation. It may be helpful to turn the wheel for better access.



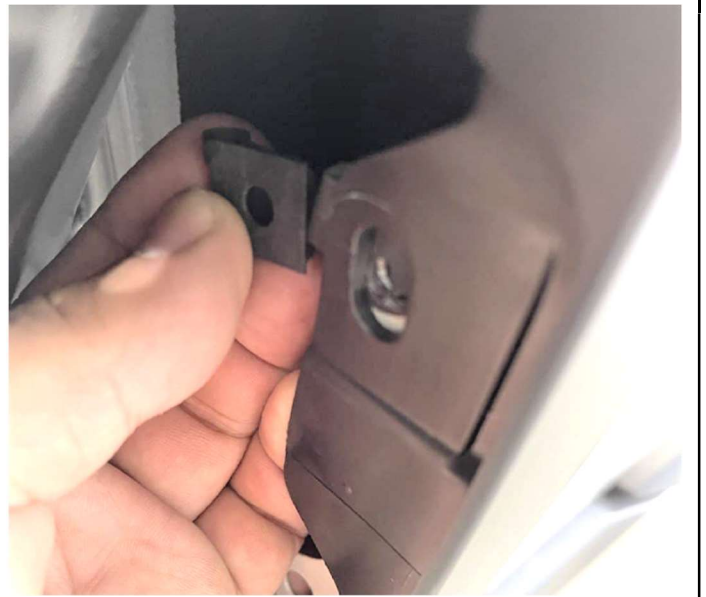
STEP 4: Remove one (1) factory bolt from underside of mud flap using 7/16" / 12mm socket. Discard.

Installation Guide

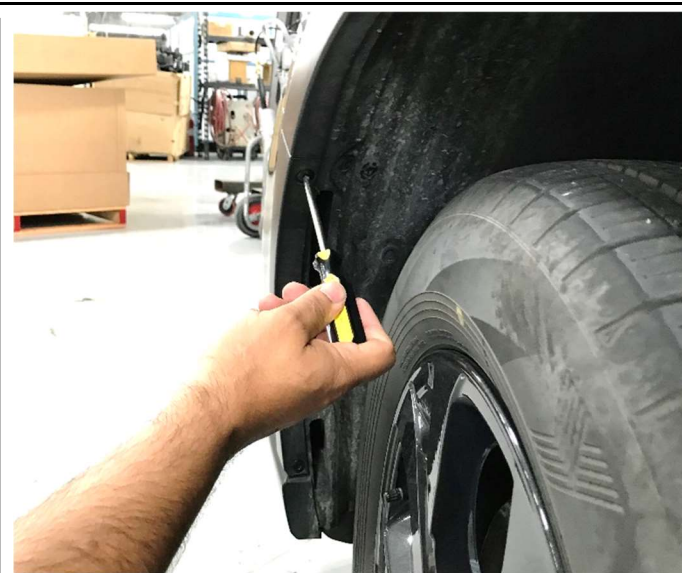
Part # TBG114035



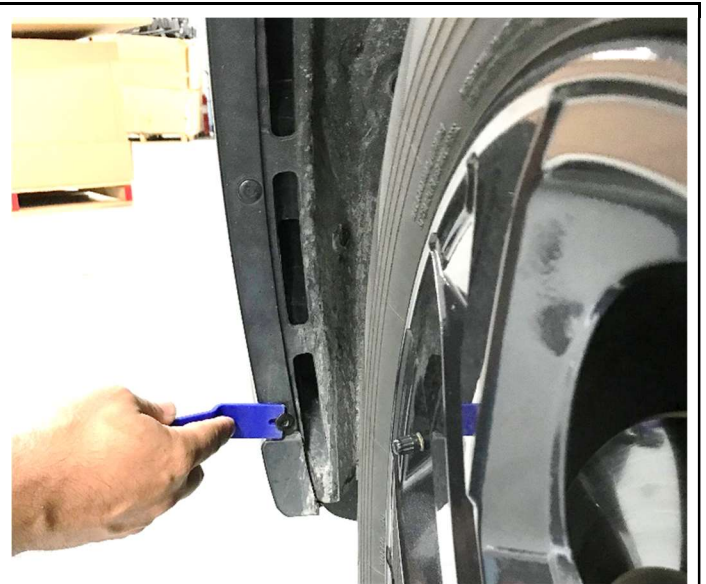
STEP 5: Remove mud flap from vehicle and discard. There will be two (2) factory clips installed on fender under mud flap – keep these in place.



STEP 6: If factory mud flap is not present, peel back wheel well liner and install two (2) supplied sheet metal clips over two (2) outer factory hole locations in rear of wheel well. The flat side of the clip will be at the wheel well side.



STEP 7: Bumper cladding removal: Using Phillips screwdriver, push two (2) plastic retainers at front of wheel well inward toward bumper to disengage (retainers will click when disengaged).



STEP 8: Using a trim removal tool, remove three (3) plastic retainers. Pry plastic bumper cladding piece from vehicle, disengaging three (3) plastic tabs located inside cladding piece. Discard cladding and plastic retainers.

Installation Guide

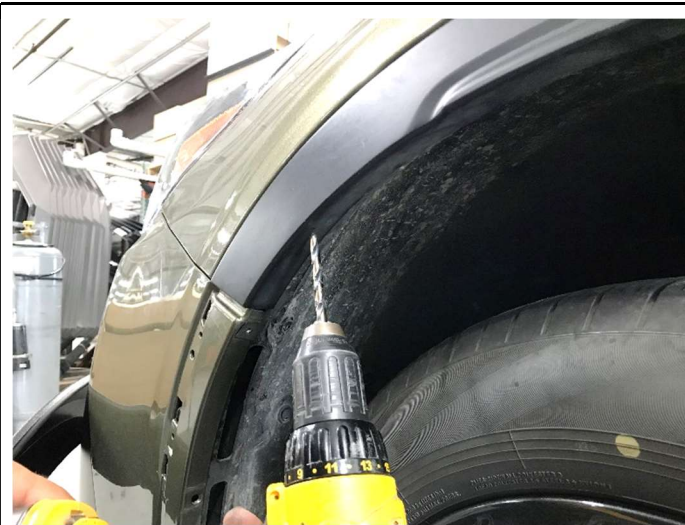
Part # TBG114035



STEP 9: Install two (2) supplied plastic-panel clips over factory holes in bumper.



STEP 10: Align assembled front flare on fender, making sure that bottom of flare are snug against underside of fender and top is not bowed. Using a grease pencil or paint marker, mark three (3) hole locations on fender using the holes in the flare as a guide.



STEP 11: Drill three (3) marked hole locations with a 5/16" drill bit.



STEP 12: Install three (3) supplied plastic-panel clips over holes drilled in step 11.

Installation Guide

Part # TBG114035



STEP 13: Install supplied screws through seven (7) holes in flare and into clips installed in previous steps. Install factory bolts into factory mud flap clips if present.

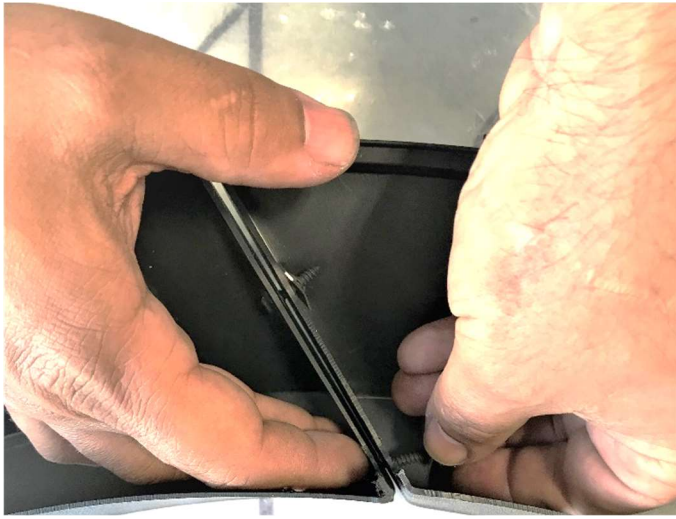


STEP 14: Ensuring continued fit of flare against fender, tighten all screws/bolts (locations shown).

Installation Guide

Part # TBG114035

REAR FENDER FLARE INSTALLATION



STEP 1: Install rear main flare to bumper flare piece using supplied spring nuts and screws in two (2) places. Tighten with Phillips screwdriver.



STEP 2: Install supplied edge trim on assembled rear flare, cutting a "U" notch when you reach the main/bumper piece assembly connection point.



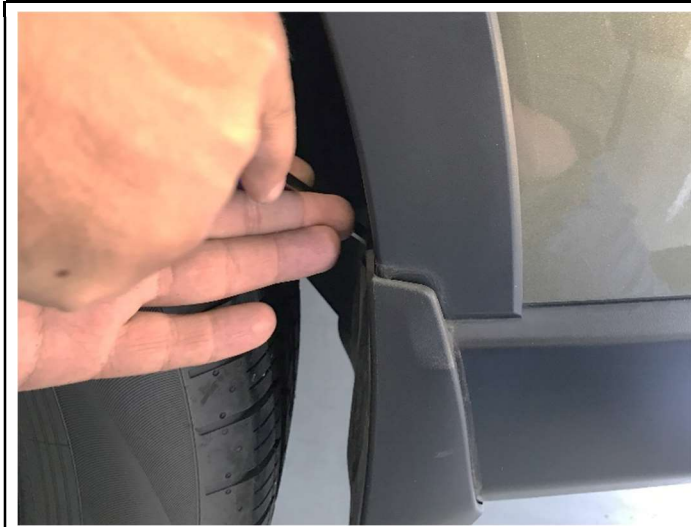
STEP 3: If vehicle is not equipped with factory mud flaps, skip to **STEP 6**.
If vehicle is equipped with factory mud flaps: Using a 5/16" / 8mm socket, remove two (2) factory bolts from inside wheel well. Retain two (2) factory bolts for installation.



STEP 4: Using trim removal tool or flathead screwdriver, remove one (1) plastic retainer underneath mud flap and another inside wheel well. Discard retainer.

Installation Guide

Part # TBG114035



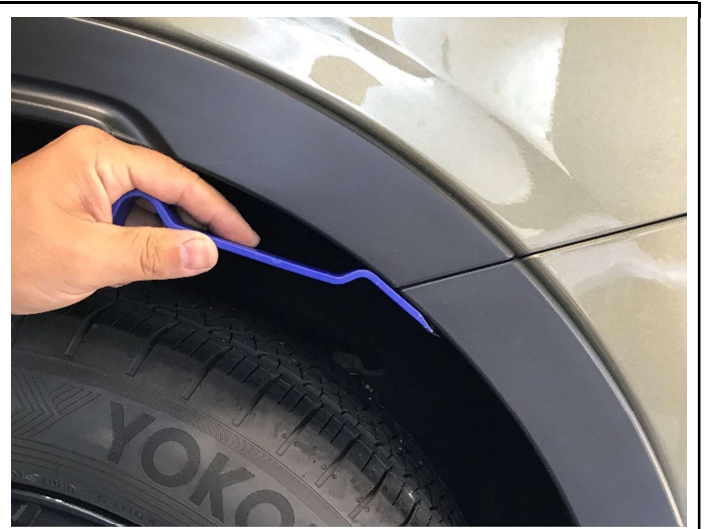
STEP 5: Remove mud flap from vehicle and discard. There will be two (2) factory clips installed on fender underneath mud flap – keep these in place.



STEP 6: If factory mud flap is not present, peel back wheel well liner and install two (2) supplied plastic-panel clips over two (2) outer factory hole locations in rear of wheel well. The flat side of the clip will be at the wheel well side.



STEP 7: Using Phillips screwdriver, push one (1) plastic retainer located at upper rear of wheel well toward vehicle body to disengage (retainer will click when disengaged). *Do not remove plastic retainer at lower rear of wheel well or rear cladding.*



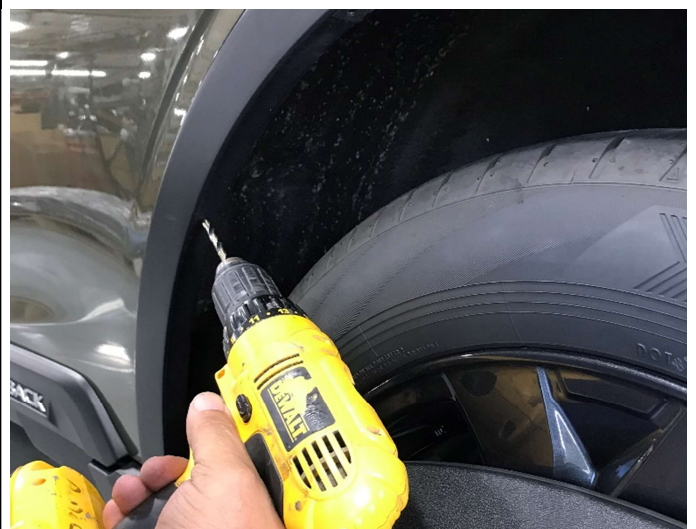
STEP 8: Using trim removal tool, remove plastic retainer and discard. Install one (1) supplied plastic-panel clip over factory hole vacated by plastic retainer.

Installation Guide

Part # TBG114035



STEP 9: Align assembled rear flare on fender, making sure that bottoms of flare are snug against underside of fender.
Using a grease pencil, mark four (4) hole locations on fender using the holes in the flare as a guide.



STEP 10: Drill four (4) marked hole locations with a 5/16" drill bit.



STEP 11: Install four (4) supplied plastic-panel clips over holes drilled in step 10.



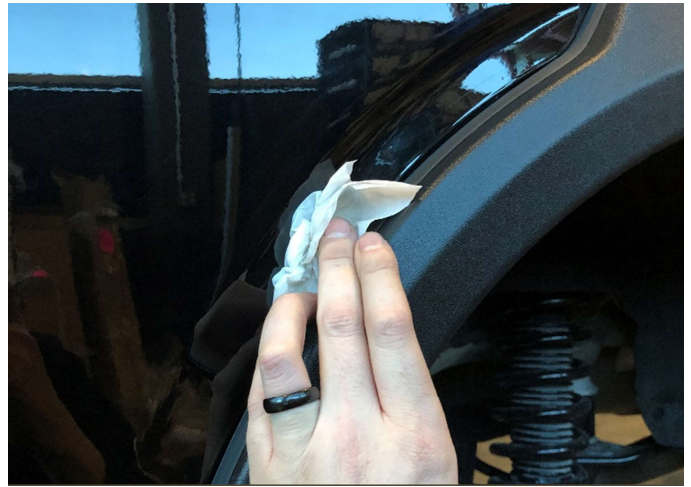
STEP 12: Install supplied screws through seven (7) holes in flare and into clips installed in previous steps, and factory bolts into factory mud flap clips if present.

Installation Guide

Part # TBG114035



STEP 13: Ensuring continued fit of flare against fender, tighten all screws/bolts.



STEP 14: Thoroughly clean rear portion of door to prep for door piece install. Use supplied alcohol wipe to remove any wax or sealant from vehicle to ensure proper tape adhesion. Do not touch this area until parts are adhered.



STEP 15: To install rear door piece, make sure that door area is clean and temperature is above 60 degrees F. Fold back tape liner tab on back of piece as shown.



STEP 16: Use 2 supplied door spacing tools to align door piece with rear flare, maintaining uniform gap along seam. (NOTE: it may be helpful to apply a small amount of tape to hold spacers in place during install.)

Installation Guide

Part # TBG114035



STEP 17: Making sure the door piece is properly aligned, carefully peel tape liner from tape incrementally. NOTE: If the part slips in the early stages of taping, it is possible to move it if needed. Once part is adhered enough to stay aligned, press as you go.



STEP 18: Press door piece against vehicle body to completely adhere tape once liner is peeled. Use 2-3 spring clamps to hold piece in place during bonding (for a total of 5 minutes). Tape bonds fully within 24 hours at 60 degrees F.



STEP 19: Prep for Trails by Grimmspeed bubble sticker install on all 4 flares by cleaning the upper flare vent area with the supplied alcohol wipe.



STEP 20: Apply Trails by Grimmspeed bubble sticker to each flare by aligning the wider curve with the forward upper curve of the "vent" area. The stickers are left or right specific but can be installed on both front and rear.