



GrimmSpeed Install Guide Series
Boost Control Solenoid Cover for 08-21 STI



Introduction:

This guide will walk you through the install steps for The Electronic Boost Control Cover on 08-21 Subaru STI.

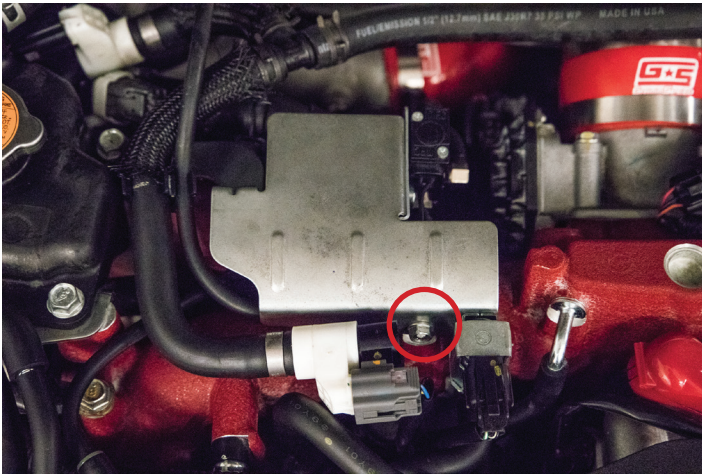
Notes:

This install was done on a 2020 Subaru STI. It is an easy install and should take around 10-15 minutes. This kit does not include any extra hardware. You will reuse the OEM nut/bolt.

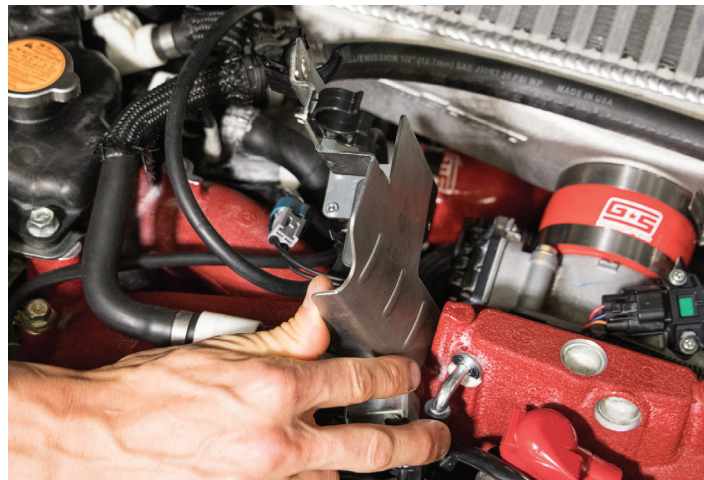
Tools Needed:

- 10mm and 12mm Socket and Wrench
- Needle Nose Pliers

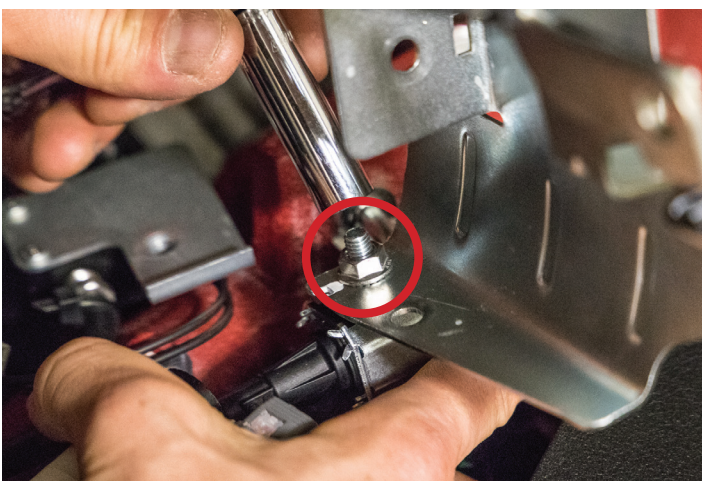
1. Locate the OEM BCS cover and find the 10mm and 12mm bolts that mount the cover to the intake manifold



2. Remove the 10mm and 12mm bolts so that the OEM cover can be flipped upside down to reveal the nut and bolt underneath.



3. Remove the 10mm nut on the underside of the cover and the mounting bolt that holds the BCS to the OEM cover (Our car is equipped with the GrimmSpeed 3-Port Boost Control Solenoid).



4. Once all bolts are out you should be able to remove the OEM cover from the engine bay.

5. Using a needle nose pliers, remove the plastic clip that holds the rubber hoses onto the cover.
6. Mount the plastic clip to your new GrimmSpeed Electronic Boost Control cover.



7. Using the OEM hardware, mount your EBCS cover by reversing steps 2-5.



Note: We recommend using The GrimmSpeed EBCS with this cover. If you are still using the OEM Boost Control unit, it can mount underneath the cover using the factory hardware as shown below.

