



“HITCH- N -GO” CART

MODEL : HNGC-350

⚠ WARNING

READ ALL INSTRUCTIONS AND WARNINGS BEFORE USING THE HITCH-N-GO

NOTE: Failure to read instructions AND WARNINGS before use could result in injury or death.

Instructions for Installation and Use:

Contents:

- 1- Hitch-N-Go Basket Assembly 1- “L” Receiver Bar
- 1- Winch Coupling
- 1- Receiver Hitch Coupling
- 2- Support Straps
- 1- Rear Axle Assembly
- 1- Front (steering) Axle Assembly
- 1- Pull Handle
- 2- Axles
- 4- Tires
- 4- Aluminum Wheel Spacers 1- Winch Handle
- 4- Cotter Pins
- 4- 5/8” Flat Washers
- 2- 5/16” x 5” Bolts
- 4- 5/16” x 2 3/4” Bolts
- 6- 5/16 Locknuts

- 1- 1/4x2” Bolt
- 8- 1/4”x1/2” Bolts
- 16- 5/16” Flat Washers
- 9 -1/4” Jam Locknuts
- 17- Thin Nylon Washers
- 8-1/4” Flat Washers

TOOLS NEEDED:

- 2-1/2” End Wrenches
- 2-7/16” End Wrenches
- NOTE: Small adjustable wrench can be substituted for one of the End Wrenches.**



STEP 1: Review contents to ensure all parts are received.

STEP 2: Remove nut from winch. (FIG.1). Install handle, replace nut and tighten. (FIG.2) Set aside for later use.

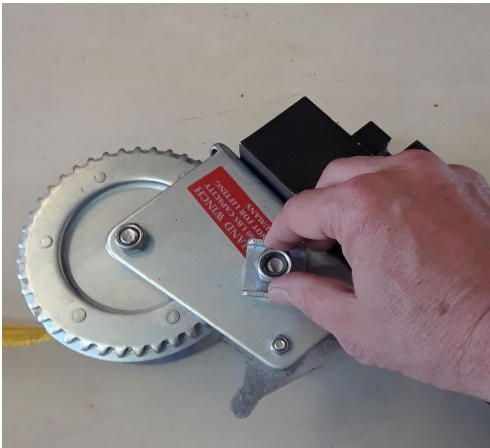


FIG. 1



FIG. 2

STEP 3: Place basket assembly upside down on work surface with handle holder and locking pin facing to your right. (FIG.3) Place steering axle assembly on right side of basket assembly and secure with 4- 1/4" x 1/2" bolts, 4- 1/4" fender washers, and 4- 1/4" jam locknuts.

(FIG. 4) NOTE: Place fender washer on bolt and slip into opening of rung on basket. (FIG. 5)



FIG. 3



FIG.4



FIG. 5

STEP 3 CONT'D: Slide bolt and washer under axle assembly and insert through hole. Install locknut on bolt. **HAND TIGHTEN ONLY!** (FIG.6) Repeat process with other 3 bolts. Center axle assembly in middle of basket and tighten all 4 bolts securely. (FIG.7) **NOTE:** Washers will bow as bolts are tightened.



FIG.6



FIG. 7

STEP 4: Follow instructions for Step 3 to install rear axle assembly to left end of basket. (FIG. 8)



FIG.8

STEP 5: Attach "L" basket bar to basket by placing "L" bar on basket with vertical part of bar towards you and turned down. (FIG. 9). Feed 5/16" x 5" bolt up through hole in center of basket and through the "L" bar. Once end of bolt is visible, place center hole of support brace over bolt and secure with flat washer and 5/16" locknut. Finger tighten only. (FIG. 10).



FIG. 9



FIG. 10

STEP 6: Connect the ends of support braces to basket rails using 5/16" x 2 3/4" bolts, flat washers, and 5/16" locknuts. Hand tighten only. Once the 3 bolts are installed, tighten with wrenches. (FIGS. 11&12). NOTE: Support braces will bend when attaching to basket. (FIG. 13)

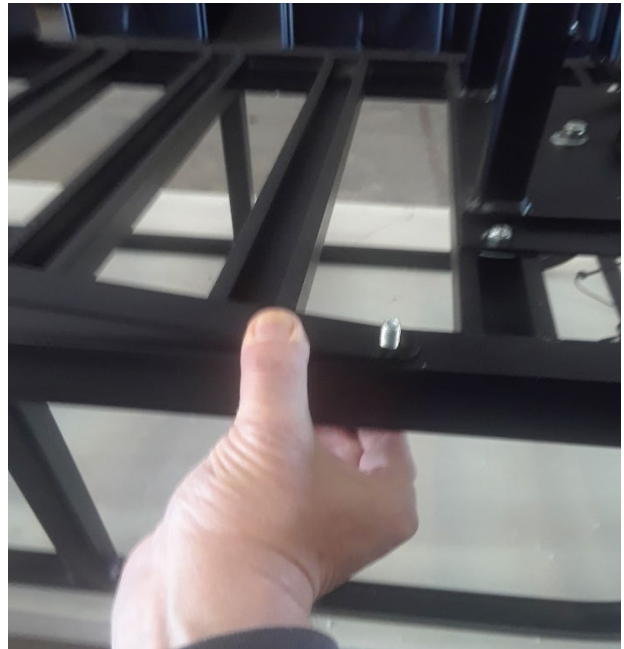


FIG. 11



FIG. 12



FIG. 13

STEP 7: Repeat steps 5 & 6 to attach the "L" bar and support braces on other side of basket.

STEP 8: Attach pull handle to steering axle assembly using 1- ¼ x 2" bolt, 2- flat washers, one under head of bolt and one under locknut, 2- thin nylon washers and 1- ¼" jam nut. (FIGS. 14&15). NOTE: Nylon washers will be between handle channel and steering mount. Tighten bolts. NOTE: Bolt should not be overtightened to allow for movement.



FIG.14



FIG.15

STEP 9: Slide axles through holes in axle assemblies. (FIG.16). Next slide wheel spacers over axles. (FIG.17).



FIG. 16



FIG. 17

STEP 9 CONT'D: Slide wheels over axles until end of axle is visible. (FIG.18) NOTE: Make sure valve stems on wheels are facing out. Secure wheels to axles using 5/8" flat washers and cotter pins. (FIG.19)
Your Hitch-N-Go Cart is now fully assembled and can be turned over and placed on its wheels.



FIG. 18



FIG. 19

INSTRUCTIONS FOR MOUNTING TO VEHICLE

STEP 1: Install receiver coupling into vehicles receiver hitch. (FIG. 1). Secure with hitch pin and cotter pin. (FIG.2)



FIG. 1



FIG. 2

STEP 2: Roll cart up to the stop on the receiver coupling. (FIG. 3). Slide winch coupling into receiver coupling and over cart bar. (FIG.4). Pin receiver and winch coupling together using hitch pin and cotter pin. (FIG. 5).



FIG. 3



FIG. 4



FIG. 5

STEP 3: Release latch on winch and pull strap down and attach to cart bar. (FIGS. 6&7).



FIG. 6



FIG. 7

STEP 4: Engage winch and raise cart until it stops. Pin in place with hitch pin and cotter pin. (FIGS. 8&9)



FIG. 8



FIG.9

STEP 5: Secure handle to cart in its upright position using bracket and quick clip pin. (FIG. 10)



FIG.10

STEP 6: When cart is in it's fully raised position, it may be locked in place using a long shank lock (NOT INCLUDED). (Fig 11)



FIG.11

STEP 7: To disconnect cart from vehicle, reverse steps 1-5. Winch coupling can be stored in vehicle and receiver coupling can be left installed on vehicle.

⚠ WARNING

ALWAYS MAKE SURE HITCH PINS ARE IN PLACE AND SECURE!

⚠ WARNING

DO NOT EXCEED WEIGHT CAPACITY OF HITCH-N-GO CART!

⚠ WARNING

NEVER HAUL PEOPLE OR PETS IN CART!

⚠ WARNING

ALWAYS MAKE SURE CARGO IS SECURED TO CART!

⚠ WARNING

MAKE SURE HANDLE IS SECURED IN UPRIGHT POSITION BEFORE DRIVING!

⚠ WARNING

USE THE WINCH TO CONTROL THE SPEED OF THE CART WHILE LOWERING IT. KEEP YOUR HAND FIRMLY ON WINCH HANDLE UNTIL CART IS COMPLETELY LOWERED TO GROUND!



“HITCH-N- GO CART” LIFT ASSEMBLY

MODEL: HNGC LIFT ASSEMBLY

⚠ WARNING

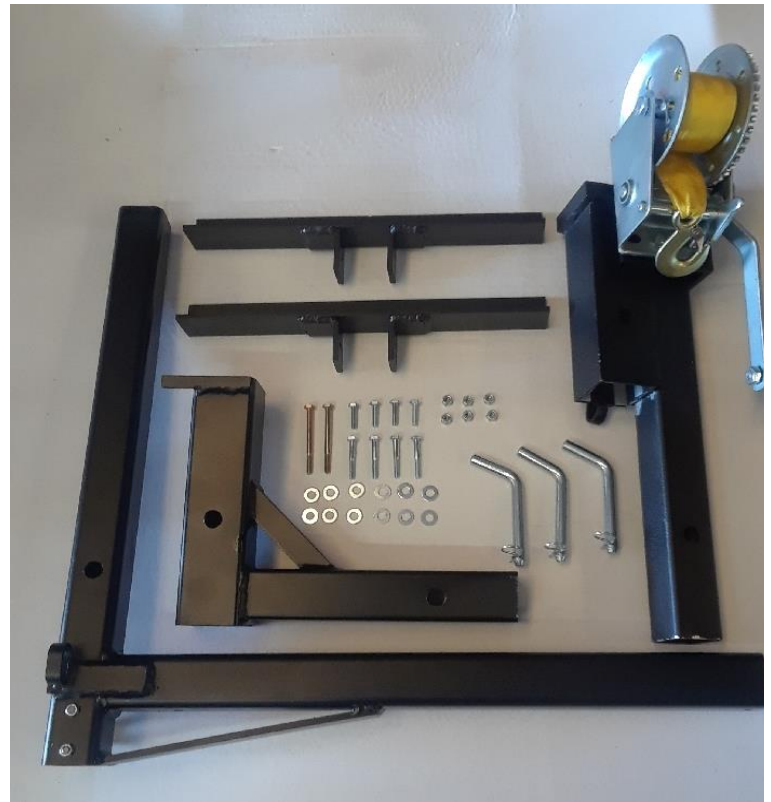
READ ALL INSTRUCTIONS AND WARNINGS BEFORE USING THE HITCH-N-GO CART

NOTE: Failure to read instructions AND WARNINGS before use could result in injury or death.

Instructions for Installation and Use:

CONTENTS:

- 1-Receiver Adapter**
- 1-Winch Coupling**
- 1-Cart Mount “L” Bar**
- 2-Cart support brackets**
- 3-1/2 Hitch pins with cotter pins**
- 1-Winch Handle**
- 2-1/4 x 3” bolts**
- 4-1/4” x 1” bolts**
- 4-1/4” x 1 3/4” bolts**
- 6-1/4” locknuts**
- 12-Flat washers**



STEP 1: Review contents to ensure all parts are received.

STEP 2: Remove nut from winch (FIG.1). Install handle, replace nut and tighten (FIG.2). Set aside for later use.



FIG. 1



FIG. 2

STEP 3: Turn cart upside down on work surface with handle facing to your right. Center cart support bracket onto bottom frame of cart (FIG.3). Mark holes in bracket on the cart (FIG.4). Remove bracket and drill cart on marks using a 5/16" drill bit (FIG.5). Repeat this step with bracket on opposite side of cart.



FIG.3



FIG. 4

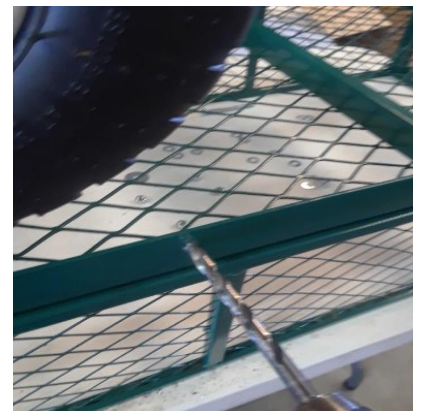


FIG. 5

STEP 4: Place brackets back onto cart frame and attach with 4-bolts,8 washers and 4 locknuts. (NOTE: BOTH 1" AND 1 3/4" BOLTS ARE PROVIDED FOR YOU TO CHOOSE FROM). Use wrenches to tighten the hardware (FIG.6)

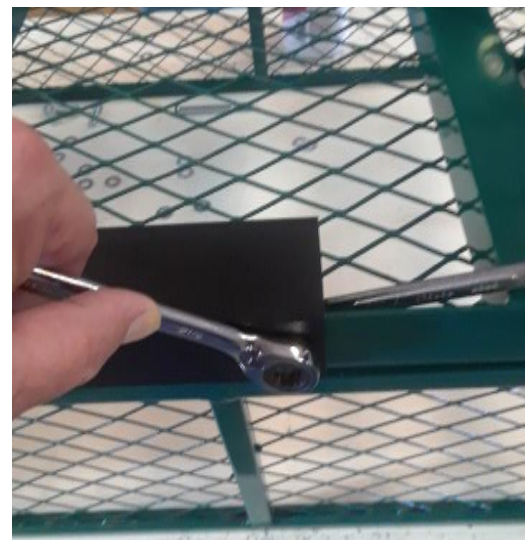


FIG. 6

STEP 5: Place cart mount “L” bar into support bracket with vertical part of “L” bar towards you and pointing down (FIG.7). (NOTE: MAKE SURE END OF BAR IS EVEN WITH THE OTHER SIDE OF CART). Mark hole on “L” bar for drilling (FIG.8)



FIG. 7



FIG.8

STEP 6: Remove bar and drill on marks using a 5/16” drill bit. Return bar to brackets and attach with 2- 1/4” x 3” bolts, 4- flat washers and 2 locknuts. Tighten bolts using wrenches (FIG.9). Cart can now be placed on its wheels.



FIG. 9

INSTRUCTIONS FOR MOUNTING TO VEHICLE

STEP 1: Install receiver coupling into vehicles receiver hitch. (FIG.1). Secure with hitch pin and cotter pin. (FIG.2)



FIG. 1



FIG.2

STEP 2: Roll cart up to the stop on the receiver coupling. (FIG.3) Slide winch coupling into receiver coupling and over cart bar. (FIG.4). Pin receiver and winch coupling together using hitch pin and cotter pin. (FIG. 5).



FIG.3



FIG.4



FIG.5

STEP 3: Release latch on winch and pull strap down and attach to cart bar. (FIGS. 6&7).

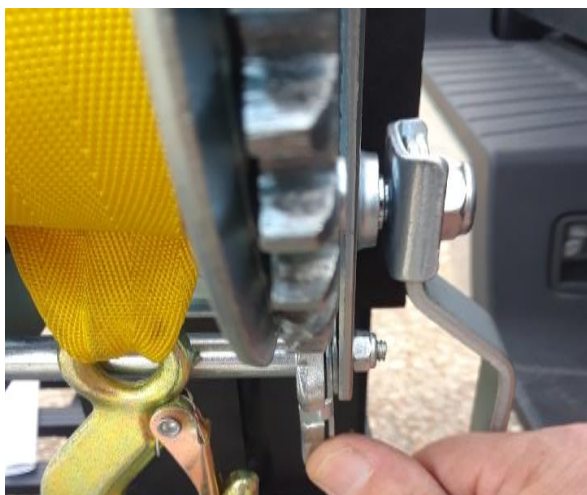


FIG.6



FIG.7

**STEP 4: Engage winch and raise cart until it stops. Pin in place with hitch pin and cotter pin.
(FIGS. 8 & 9)**



FIG.8



FIG.9

**STEP 5: Secure handle to cart in its upright position using bracket and quick clip pin.
(FIG. 10)**



FIG.10

STEP 6: When cart is in its fully raised position, it may be locked in place using a long shank lock (NOT INCLUDED). (Fig 11)



FIG.11

STEP 7: To disconnect cart from vehicle, reverse steps 1-5. Winch coupling can be stored in vehicle and receiver coupling can be left installed on vehicle.

***WEIGHT CAPACITY OF THE LIFT ASSEMBLY IS 350 LBS. DO NOT EXCEED!!!**

⚠ WARNING

ALWAYS MAKE SURE HITCH PINS ARE IN PLACE AND SECURE!

⚠ WARNING

DO NOT EXCEED WEIGHT CAPACITY OF HITCH-N-GO CART!

⚠ WARNING

NEVER HAUL PEOPLE OR PETS IN CART!

⚠ WARNING

ALWAYS MAKE SURE CARGO IS SECURED TO CART!

⚠ WARNING

MAKE SURE HANDLE IS SECURED IN UPRIGHT POSITION BEFORE DRIVING!

⚠ WARNING

USE THE WINCH TO CONTROL THE SPEED OF THE CART WHILE LOWERING IT. KEEP YOUR HAND FIRMLY ON WINCH HANDLE UNTIL CART IS COMPLETELY LOWERED TO GROUND!



“HITCH-N-GO CART” WHEEL KIT

MODEL : HNGC-350 WHEEL KIT

⚠ WARNING

READ ALL INSTRUCTIONS AND WARNINGS BEFORE USING THE HITCH-N-GO WHEEL KIT!
NOTE: Failure to read instructions AND WARNINGS before use could result in injury or death.

Instructions for Installation and Use:

CONTENTS:

- 4- Tires
- 2- 5/8" axles
- 1-Steering axle assembly with pull handle.
- 1-Rear Axle Assembly
- 4-Aluminum Wheel Spacers
- 4-5/8" Washers
- 4-Cotter Pins
- 9- 1/4"x 1/2" Bolts
- 9-1/4" Jam Locknuts
- 8-1/4" Fender Washers
- 1-Padded Conduit Clamp
- 1-Handle Holding Bracket
- 1-1/4" Wire Lock Pin with Lanyard



NOTE: Review contents to ensure all parts are received.

STEP 1: Place “Hitch-N-Ride” upside down on work surface. Place steering axle assembly onto last 2 rungs on one end of the basket (FIG.1), and secure with 4-1/4”x1/2” bolts, 4-1/4” fender washers, and 4-1/4” jam locknuts. *NOTE:* Place fender washers on bolt and slip into opening of rung on basket (FIG.2). Slide bolt and washer under axle assembly and insert through hole. Install locknut on bolt. **HAND TIGHTEN ONLY!** (FIG.3). Repeat process with other 3 bolts. Center Axle assembly in middle of basket and tighten all 4 bolts (FIG4). Washer will bow as bolts are tightened.



FIG. 1



FIG. 2



FIG.3



FIG.4

STEP 2: Follow instructions for Step 1 to install rear axle assembly to basket (FIG.5).



FIG.5

STEP 3: Slide axles through holes in axle assemblies (FIG.6). Next slide wheel spacers over axles (FIG.7). Slide wheels over axles until end of axle is visible (FIG.8). NOTE: Make sure valve stems on wheels are facing out. Secure wheels to axles using 5/8" flat washers and cotter pins (fig.9).



FIG.6



FIG.7



FIG.8



FIG.9

STEP 4: Turn cart assembly onto wheels. Attach handle holder to top round bar of basket on the end with front steering assembly. Secure with 1- padded clamp, 1- 1/4" x 1/2" bolt and 1- 1/4" jam locknut (FIG.10). Tighten bolt. NOTE: Handle holder will be moveable after installation. Secure lanyard attached to quick pin around same round bar. Quick pin will be used to secure handle into handle holder (FIG.11 and FIG.12 (next page)).



FIG.10



FIG.11



FIG.12

NOTE: If “Hitch -N-Ride” is to be used as cart/wagon only, the receiver bar and braces may be removed. If “Hitch-N-Ride” is to be used with the HNGC-350 lift assembly, remove receiver bar and braces. Keep braces for use with lift.

⚠ WARNING

DO NOT EXCEED WEIGHT CAPACITY OF HITCH-N-GO CART!

⚠ WARNING

NEVER HAUL PEOPLE OR PETS IN CART!

⚠ WARNING

ALWAYS MAKE SURE CARGO IS SECURED TO CART!

⚠ WARNING

MAKE SURE HANDLE IS SECURED IN UPRIGHT POSITION WHEN NOT IN USE!