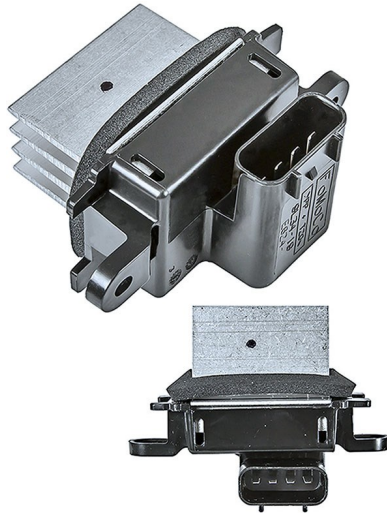




Have you experienced an issue with the blower motor speed selection on a Ford Escape or the Mercury Mariner 2008 – 2011?

Have you experienced an issue with the blower motor speed selection on a Ford Escape or Mercury Mariner 2008 – 2011? The most likely problem is the blower motor resistor has failed and will require replacement. These are a common problem on this vehicle. It is always best to check the connection for sign of burning between the resistor and the electrical connection. This could be a sign that there is another issue with the electrical circuit.



Automatic A/C Blower Resistor
#1712398



Manual A/C Blower Motor Resistor
#1712209



Electrical Connector with Waterproof Butt Connectors
#1712341

gpd offers replacement blower motor resistors and pigtail for both the manual and Automotive A/C system