



Side Window Deflectors

**Before installing the deflectors, please read the manual.
Incorrect installation of deflectors can cause danger or injury.**

ATTENTION! IMPORTANT INFORMATION!

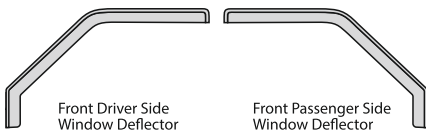


ATTENTION! Read the installation instructions carefully and follow all points in the text! Incorrectly installed deflectors can be dangerous. If in doubt, please contact Goodyear.

- If the safety features of the vehicle do not allow you to close the window, deactivate them (check the car instruction manual).
- After installing the deflectors, leave the car windows closed for 24 hours. If the temperature is below 62.5°F/17°C, leave closed at minimum 24 hours and longer if possible.
- We strongly recommend installing the deflectors at temperatures between 59°F/15°C and 77°F/25°C.

COMPLETE SET:

2 Piece Set (the product may differ from the illustration in the instructions)



Metal bracket
(2 pieces)



Transparent
protective tape
(2 pieces)



Alcohol wipe
(2 pieces)

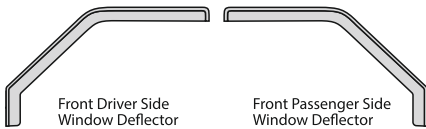


Instruction
manual



Plastic blade
(1 piece)

4 Piece Set (the product may differ from the illustration in the instructions)



Metal bracket
(2 pieces)



Transparent
protective tape
(2 pieces)



Alcohol wipe
(2 pieces)



Instruction
manual



Plastic blade
(1 piece)



Rear Driver Side
Window Deflector



Rear Passenger Side
Window Deflector

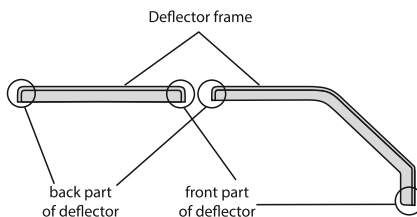


Fastening bracket
(4 pieces)



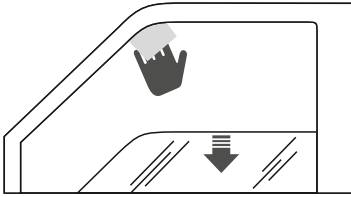
Metal plate for
installation (1 piece)

THE TERMS, USED IN THIS INSTRUCTION MANUAL



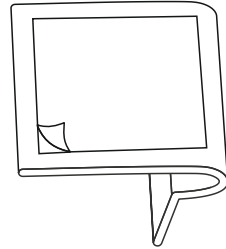
FRONT DEFLECTORS

1



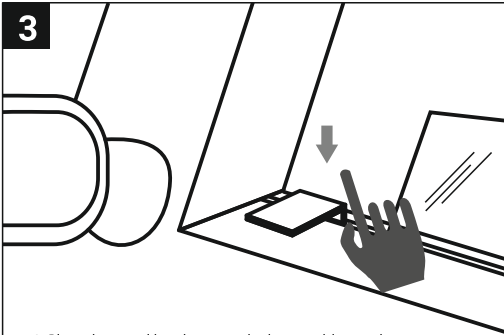
1. Make sure the car windows are clean and dry. Next, lower the side windows completely and clean the grease off the inner surface of the window channel with an alcohol wipe.

2



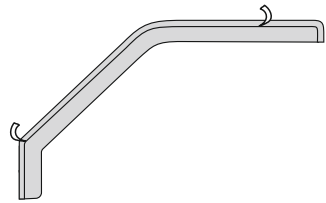
2. Place a small section of the transparent protective tape, included with the complete set, onto the flat surface of the metal bracket as shown in the picture.

3



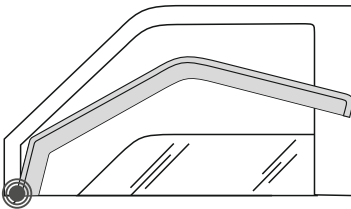
3. Place the metal bracket onto the lower rubber seal as close to the front window frame as possible.

4



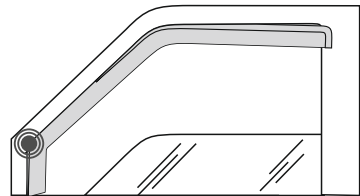
4. Remove the protective liner from the tape on the deflector.

5

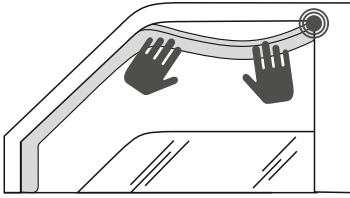


5. Lower the front part of the deflector onto the metal bracket as shown in the picture.

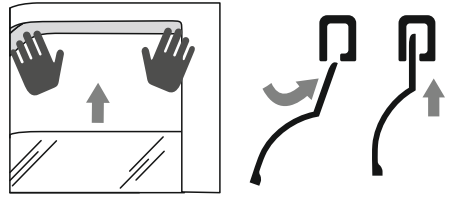
6



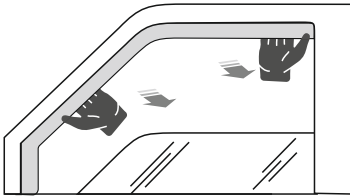
6. Shift the deflector forward, fitting the deflector frame into the channel completely. Make sure the deflector is placed above the lower window frame.

7

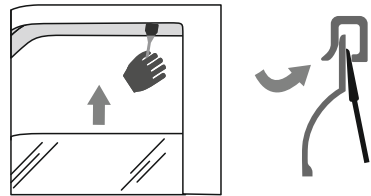
7. Bending the center part of the deflector outwards, insert the back part of the deflector into the channel, leaving a gap above it.

8

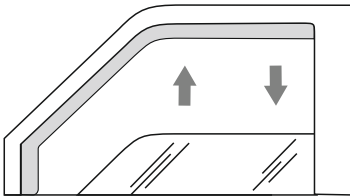
8. Starting with the front part of the deflector, insert it into the window channel.

9

9. Immediately after installing the deflector, adjust its position by carefully pulling it outwards.

10

10. To ensure better installation of the deflector and better adhesion between the tape and the surface of the rubber seal, it is strongly recommended that you use the plastic blade, moving it slowly between the window's inner rubber seal and the deflector.

11

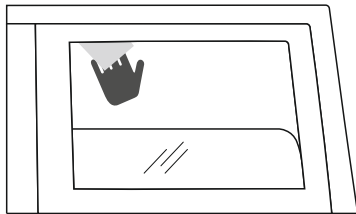
11. Raise the window until it touches the deflector. Carefully pulling the deflector outwards, roll up the window with abrupt movements. Repeat this action 4-5 times, then leave the window closed.

12

12. Repeat points 1 to 11 on the opposite side of the vehicle.

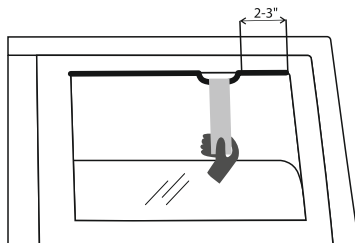
REAR DEFLECTORS (FOR FOUR-DOOR VEHICLES)

1



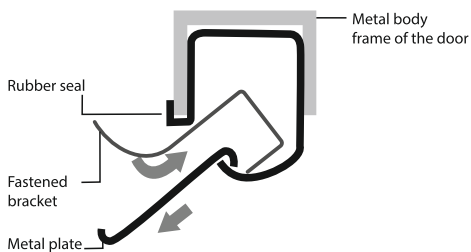
1. Make sure the car windows are clean and dry. Next, lower the side windows completely and clean the grease off the inner surface of the window channel with an alcohol wipe.

2



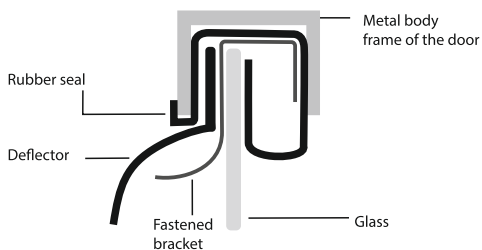
2. To position the fixture, bend the edge of the rubber seal from the back frame of the window by 2-3 inches by using a special metal plate as is shown in the picture.

3



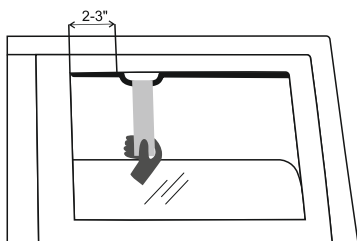
3. Place the fastening bracket in the channel and return the rubber seal to its original position.

4



4. The picture demonstrates how to position the fastening bracket.

5

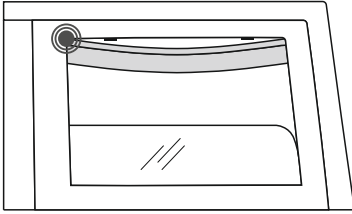


5. Bend the edge of the rubber seal from the front frame of the window by 2-3 inches. Place the fastening bracket in the channel and return the rubber seal to its original position.

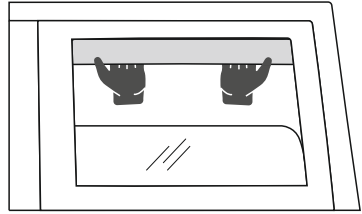
6



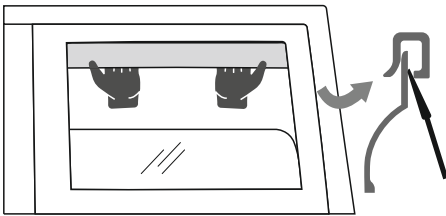
6. Remove the protective liner from the tape on the deflector.

7

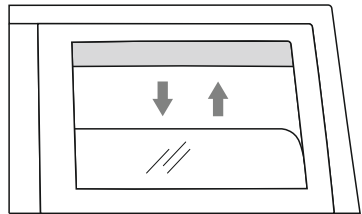
7. The deflector must be installed starting at the back. To do so, place the back part of the deflector frame into the channel and move the front part upwards. Position the entire deflector frame into the window channel, placing the frame between the fastening brackets and the rubber seal as shown in the picture.

8

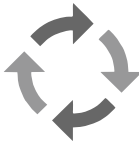
8. Immediately after installing the deflector, adjust its position by carefully pulling it outwards.

9

9. To ensure better installation of the deflector and better adhesion between the tape and the surface of the rubber seal, it is strongly recommended that you use the plastic blade, moving it slowly between the window's inner rubber seal and the deflector.

10

10. Raise the window until it touches the deflector. Carefully pulling the deflector outwards, roll up the window with abrupt movements. Repeat this action 4-5 times, then leave the window closed.

11

11. Repeat points 1 to 10 on the opposite side of the vehicle.

CONGRATULATIONS!

Your unique and durable deflectors by Goodyear are installed to give you joy! From this moment on we hope you enjoy their appearance!

We are glad to work for you and your vehicle to produce high quality products, which have ideal fit, easy installation and enjoyment with everyday use.



Goodyear (and winged foot design) and Blimp are trademarks of The Goodyear Tire & Rubber Company.
Copyright 2019 The Goodyear Tire & Rubber Company.

Discover other rain guards and wind deflectors on our website.