

## INSTALLATION INSTRUCTIONS

4000 SERIES SIDE STEPS PART NUMBER 4094 (B-C-PS)  
09-10 DODGE RAM 1500 / 2010 2500HD, 3500HD REG CAB P/U 4DR 2/4WD  
**Do not attempt to install this product on any vehicle other than the one it is designed for and listed above!**

### PARTS LIST

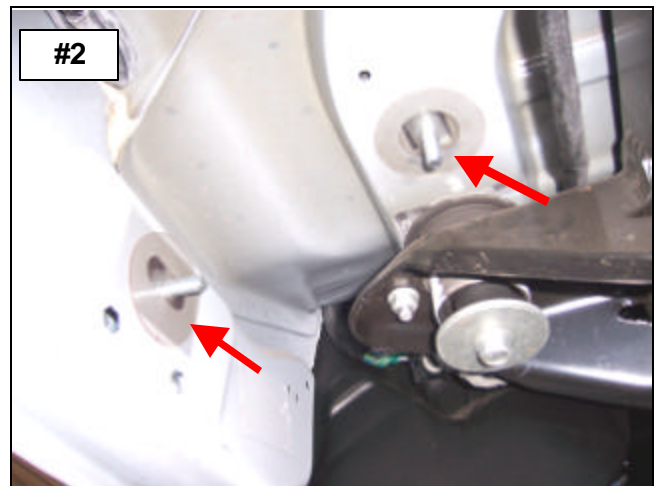
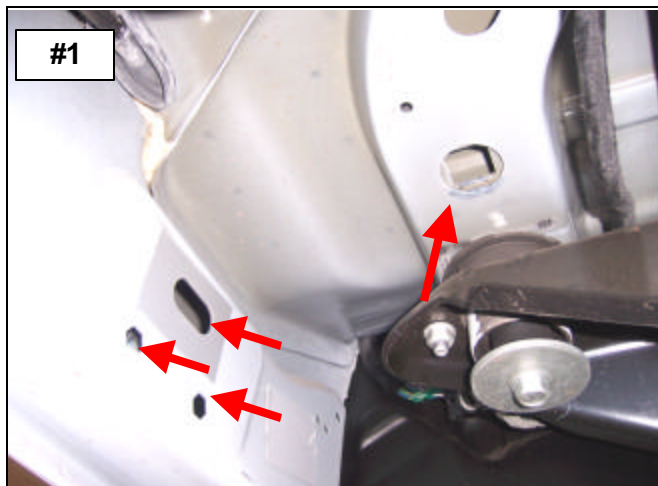
<u>QTY</u>	<u>PART DESCRIPTION</u>	<u>QTY</u>	<u>PART DESCRIPTION</u>
10	3/8" X 1 1/4" HEX BOLTS	1	4094D DRIVER SIDE STEP
18	3/8" FLAT WASHERS	1	DRIVER FRONT BRACKET
18	3/8" LOCK WASHERS	1	DRIVER FRONT AUXILIARY BRACKET
10	3/8" HEX NUTS	1	DRIVER REAR BRACKET
4	1/2" X 2" HEX BOLTS	1	DRIVER REAR AUXILIARY BRACKET
4	1/2" FLAT WASHERS	1	4094P PASSENGER SIDE STEP
4	1/2" LOCK WASHERS	1	PASSENGER FRONT BRACKET
8	VINYL GASKETS	1	PASSENGER FRONT AUXILIARY BRACKET
4	3/8" T-BOLT	1	PASSENGER REAR BRACKET
4	3/8" T-PLATE	1	PASSENGER REAR AUXILIARY BRACKET

### INSTALLATION INSTRUCTIONS

**READ THE INSTRUCTIONS COMPLETELY BEFORE YOU BEGIN THE INSTALLATION**

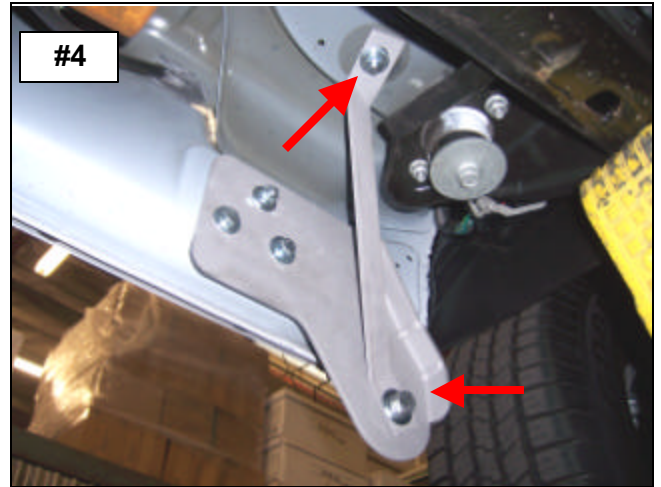
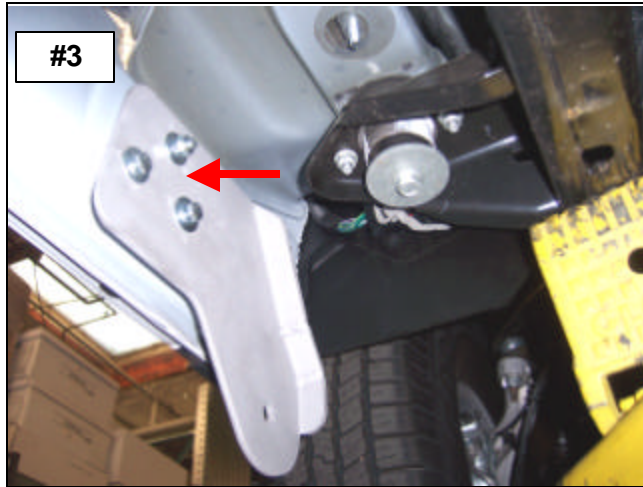
**STEP-1** BEGIN THE INSTALLATION BY INSTALLING THE DRIVER SIDE FRONT BRACKETS. LOCATE THE HOLES IN THE BODY PANEL AND UNDERSIDE OF THE BODY AT THE FRONT OF THE CAB.  
**PHOTO #1**

**STEP-2** INSTALL (1) 3/8" T-PLATE IN THE OBLONG HOLE IN THE BODY PANEL AND INSTALL (1) VINYL GASKET OVER THE THREADS TO PREVENT THE T-PLATE FROM FALLING INTO THE BODY. INSTALL (1) 3/8" T-BOLT IN THE SQUARE HOLE IN THE UNDERSIDE OF THE BODY AND INSTALL (1) VINYL GASKET OVER THE THREADS TO PREVENT THE T-BOLT FROM FALLING INTO THE BODY. **PHOTO #2**



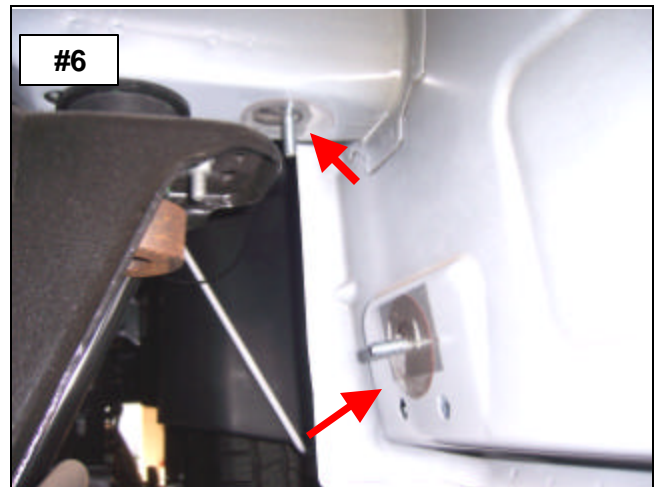
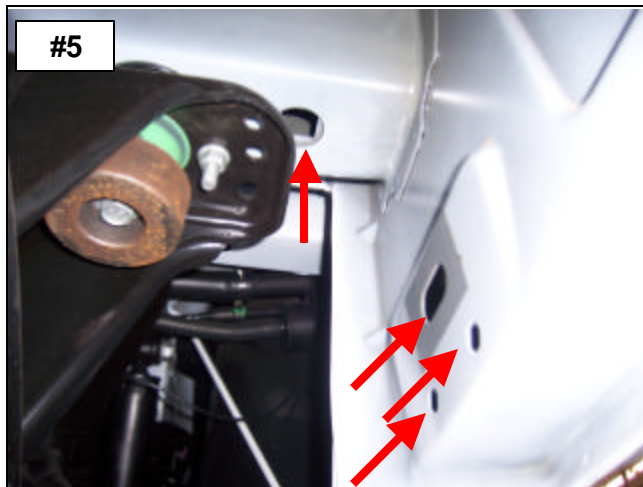
**STEP-3** ATTACH THE DRIVER SIDE FRONT BRACKET TO THE BODY PANEL USING THE T-PLATE (2) 3/8" X 1/4" HEX BOLTS, (3) 3/8" FLAT WASHERS, (3) 3/8" LOCK WASHERS AND (1) 3/8" HEX NUT. HAND TIGHTEN. **PHOTO #3**

**STEP-4** ATTACH THE DRIVER SIDE FRONT AUXILIARY BRACKET TO THE UNDERSIDE OF THE BODY USING THE T-BOLT, (1) 3/8" FLAT WASHER, (1) 3/8" LOCK WASHER AND (1) 3/8" HEX NUT. HAND TIGHTEN. **PHOTO #4**



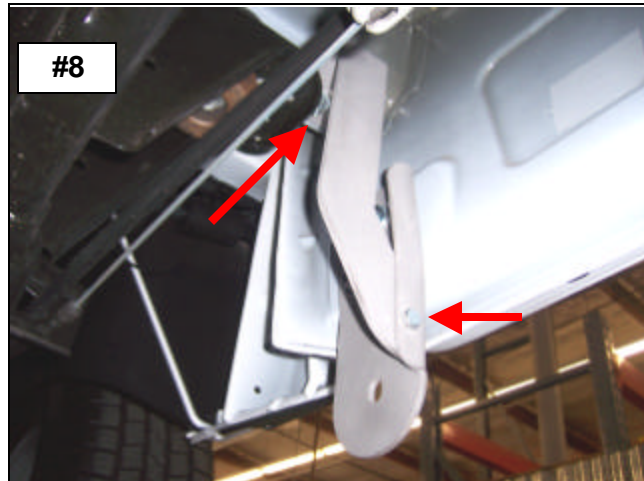
**STEP-5** LOCATE THE HOLES IN THE BODY PANEL AND UNDERSIDE OF THE BODY AT THE REAR OF THE CAB. **PHOTO #5**

**STEP-6** INSTALL (1) 3/8" T-PLATE IN THE OBLONG HOLE IN THE BODY PANEL AND INSTALL (1) VINYL GASKET OVER THE THREADS TO PREVENT THE T-PLATE FROM FALLING INTO THE BODY. INSTALL (1) 3/8" T-BOLT IN THE SQUARE HOLE IN THE UNDERSIDE OF THE BODY AND INSTALL (1) VINYL GASKET OVER THE THREADS TO PREVENT THE T-BOLT FROM FALLING INTO THE BODY. **PHOTO #6**



**STEP-7** ATTACH THE DRIVER SIDE REAR BRACKET TO THE BODY PANEL USING THE T-PLATE (2) 3/8" X 1 1/4" HEX BOLTS, (3) 3/8" FLAT WASHERS, (3) 3/8" LOCK WASHERS AND (1) 3/8" HEX NUT. HAND TIGHTEN. **PHOTO #7**

**STEP-8** ATTACH THE DRIVER SIDE REAR AUXILIARY BRACKET TO THE UNDERSIDE OF THE BODY USING THE T-BOLT, (1) 3/8" FLAT WASHER, (1) 3/8" LOCK WASHER AND (1) 3/8" HEX NUT AND TO THE FLANGE OF THE REAR BRACKET USING (1) 3/8" X 1 1/4" HEX BOLT, (1) 3/8" FLAT WASHER, (1) 3/8" LOCK WASHER AND (1) 3/8" HEX NUT. HAND TIGHTEN. **PHOTO #8**



**STEP-9** ATTACH THE DRIVER SIDE STEP TO THE FRONT AND REAR BRACKETS USING (1) 1/2" X 2" HEX BOLT, (1) 1/2" FLAT WASHER AND (1) 1/2" LOCK WASHER FOR EACH BRACKET.

**STEP-10** ALIGN THE SIDE STEP WITH THE VEHICLE AND TIGHTEN ALL MOUNTING BRACKET AND SIDE STEP NUTS AND BOLTS. REPEAT THE ABOVE PROCESS TO INSTALL THE PASSENGER SIDE BRACKETS AND SIDE STEP.

