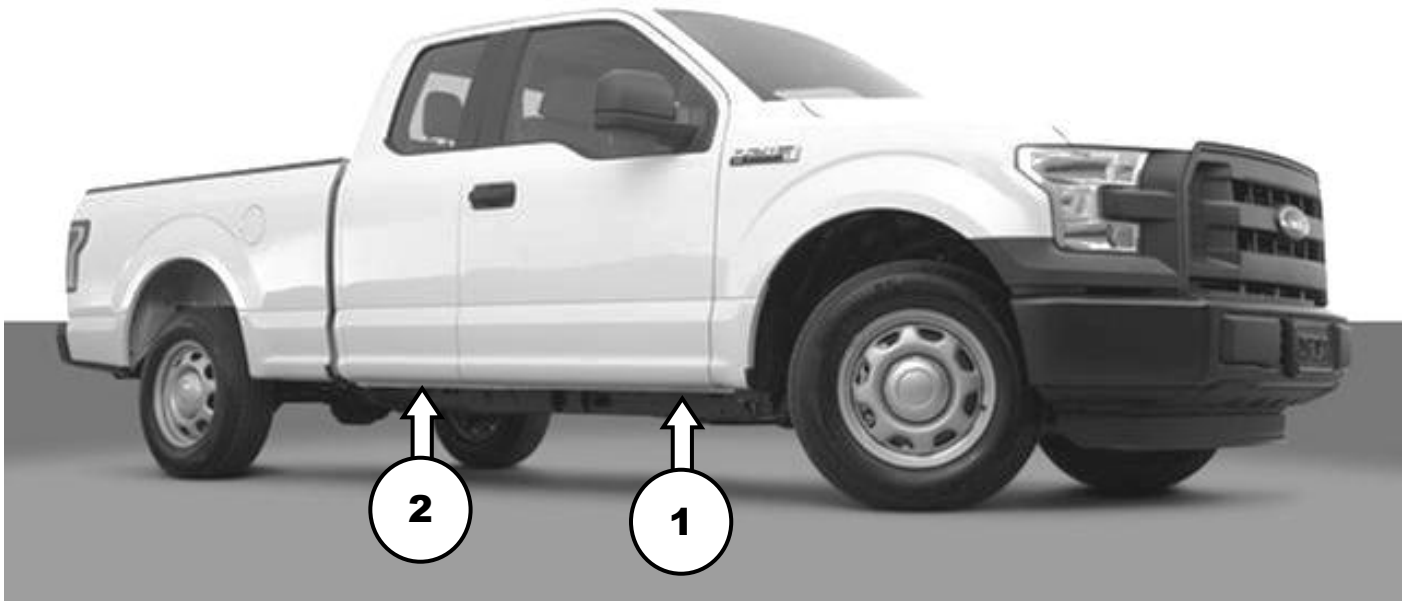


Installation

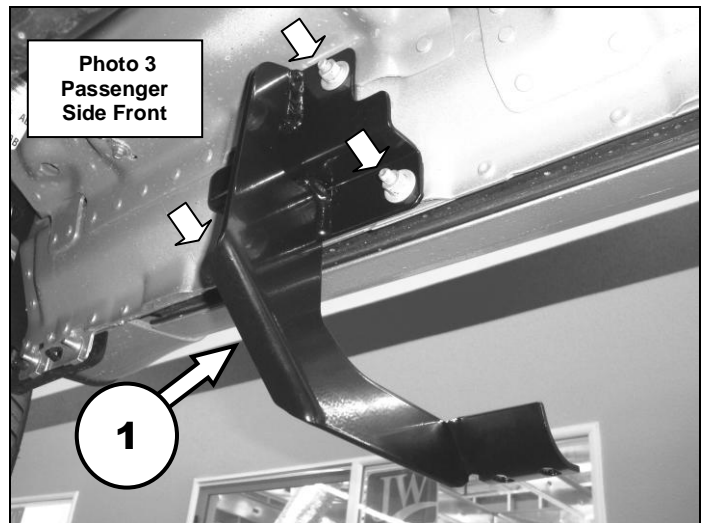
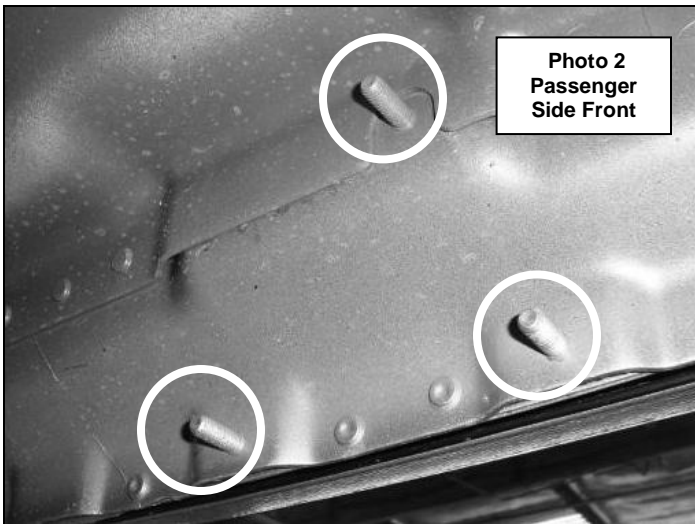
This installation uses 2 mounting brackets per side, (Photo 1).

Photo 1

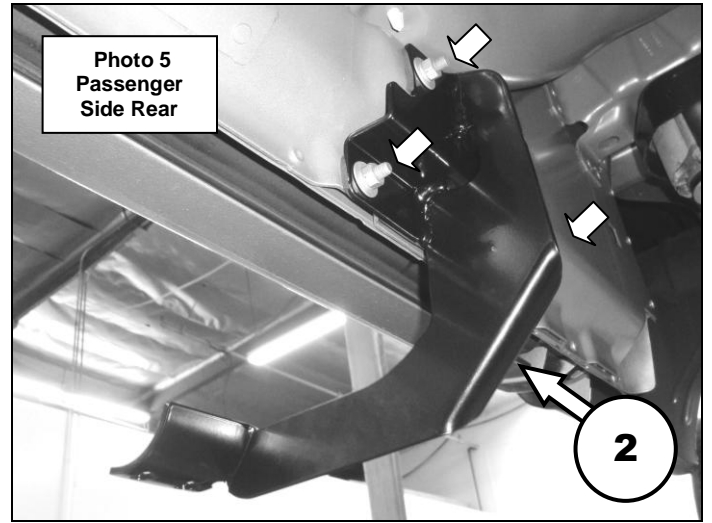
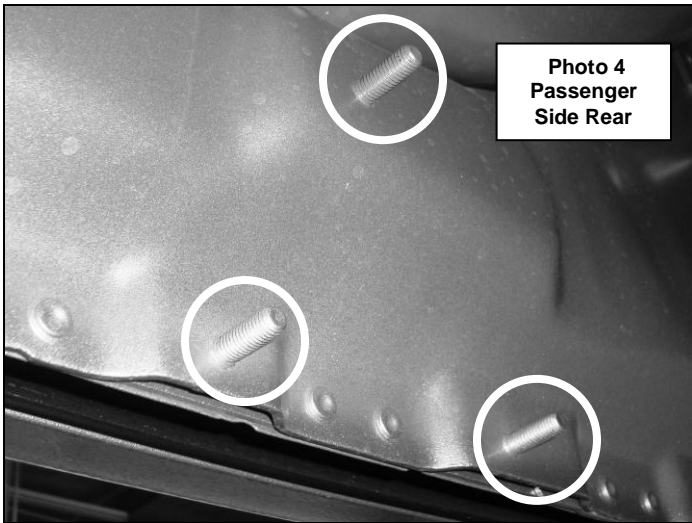


Step-1 Begin the installation on the passenger side. Starting at the front of the vehicle, locate the (3) threaded studs on the inner rocker panel, (Photo 2).

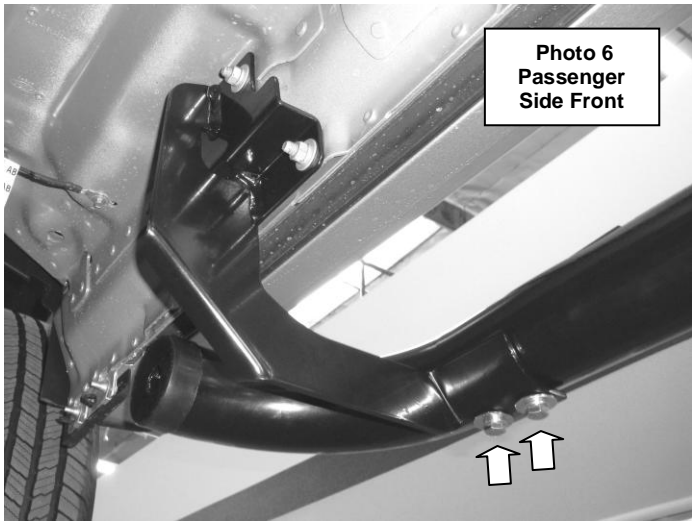
Step-2 Install the passenger front bracket by positioning the bracket over the studs and secure to the rocker panel using (3) 5/16" flat washers, (3) 5/16" lock washers and (3) M8 hex nuts. Leave the nuts loose for final adjustment, (Photo 3).



Step-3 Locate the (3) threaded studs on the inner rocker panel at the rear of the cab and repeat the above steps to install the passenger rear bracket, (Photo 4 & 5).



Step-4 Attach the driver side step to each bracket using (2) 3/8" x 1 1/4" hex bolts, (2) 3/8" flat washers, (2) 3/8" lock washers and (2) 3/8" hex nuts, (Photo 6 & 7).



Step-5 Align the side step with the vehicle and tighten all bracket and side step nuts and bolts, (Photo 8). Repeat the above steps to install the driver side brackets and side step. Remember to check and retighten the nuts and bolts every six months.

