

INSTALLATION INSTRUCTIONS

Ford F150 Super Crew
2015[SideStep](#)

4155 (B-C-PS)

PARTS LIST

Item	Qty.	Part No.	Description	Torque
1	1 set	37969	SIDE BAR	
2	2 set	379694AA	FRONT/REAR BRACKET	
3	2 set	379694BA	AUXILIARY BRACKET	
4	1 set	379690AA	CENTER BRACKET	
5	4		1/2" X 2" HEX BOLT	
6	4		1/2" FLAT WASHER	
7	4		1/2" SPRING LOCK WASHER	
8	18		M8 HEX NUT Gray.P.	16 Lb Ft
9	18		5/16" FLAT WASHER Gray P.	
10	18		5/16" SPRING LOCK WASHER Gray P.	
11	8		5/16"x 1" CARRIAGE HEAD BOLT Black P.	
12	2		5/16"X 1" HEX BOLT Black P.	20 Lb Ft
13	10		5/16" FLAT WASHER Black P.	
14	10		5/16" SPRING LOCK Black P.	
15	8		5/16" HEX NUT Black P.	20 Lb Ft

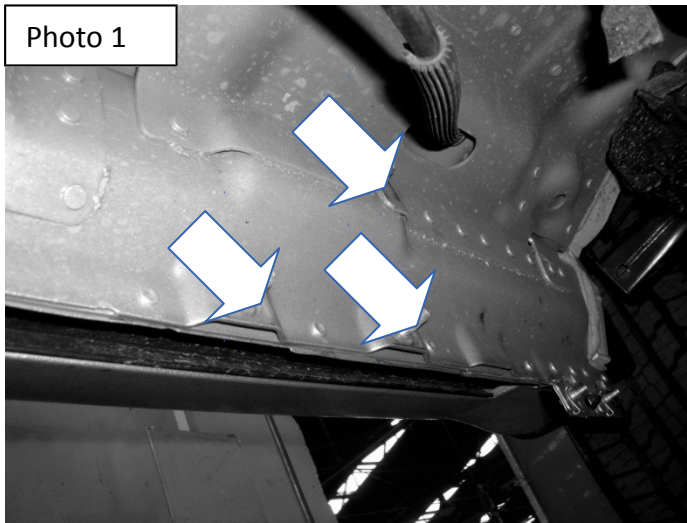
Tool Required:

- A. 1/2", 3/4" & 13mm Wrench
- B. Ratchet
- C. Ratchet extension
- D. 1/2", 3/4" & 13mm socket

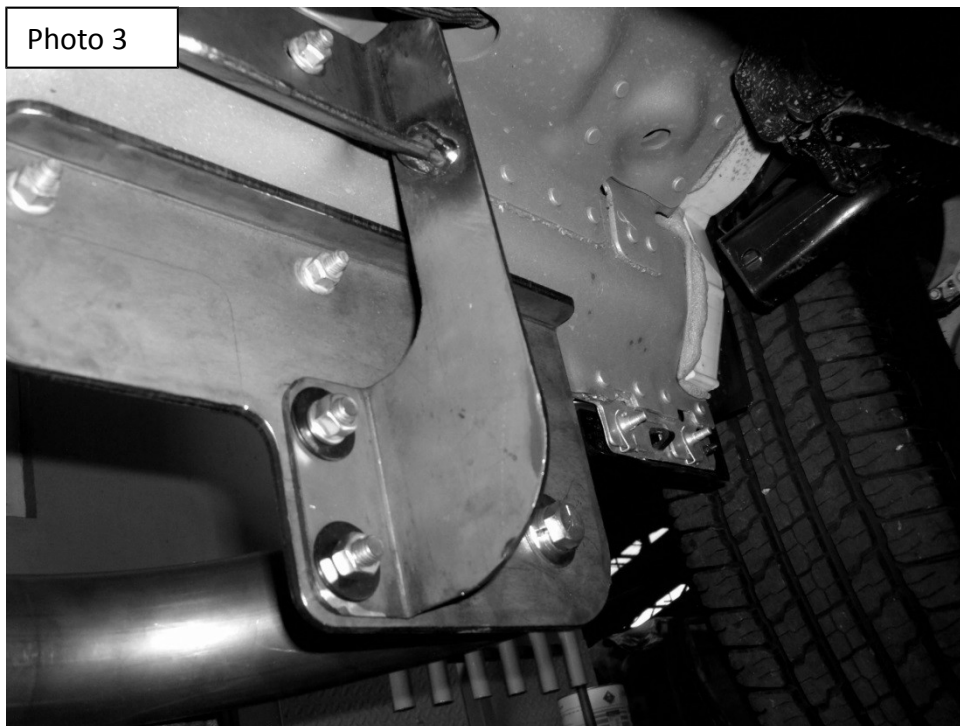
Read the installation instructions completely and verify that all of the parts listed are accounted for.

To maintain and care this product keep it clean and do not use abrasive cleaners or polish waxes. It is recommended to use only non-abrasive automotive wax such as pure carnauba to avoid scratches and rust.

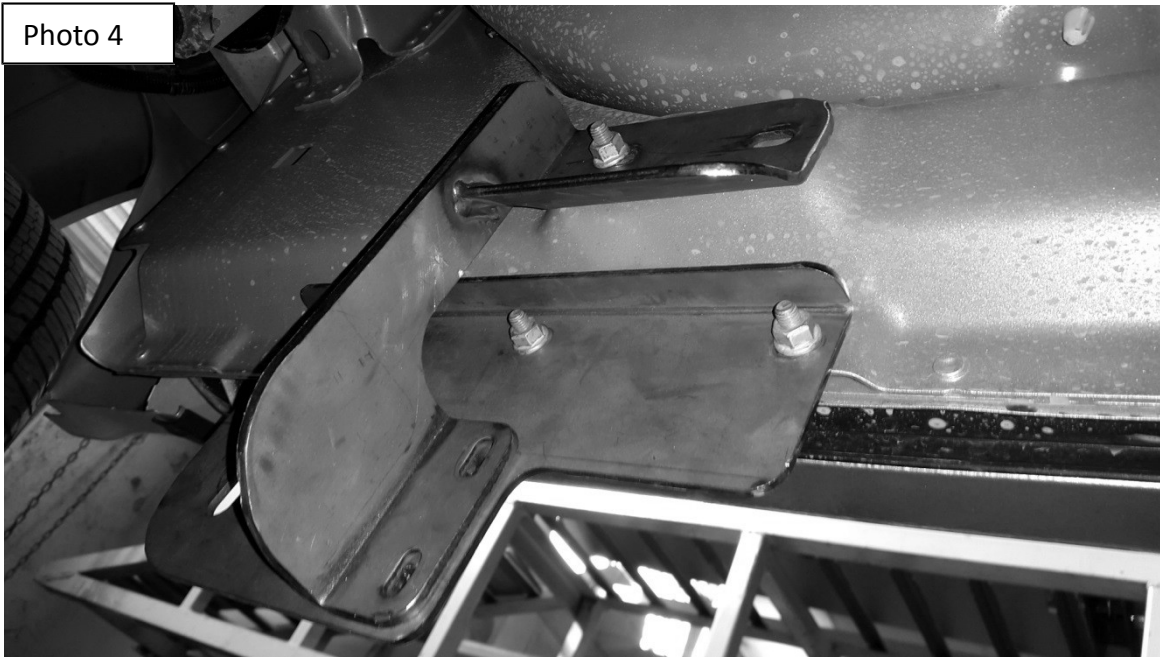
1. Beginning with the driver side, locate the three M8 welded bolts in the rocker panel at the front of the cab (**Photo 1**). Install the front bracket using (2) 5/16" flat washers Gray P., (2) 5/16" spring lock washers Gray P. and (2) M8 hex nut Gray P. Leave loose for final adjustment. (**Photo 2**)



2. Install the auxiliary bracket using (1) b M8 hex nut Gray P., (1) 5/16" flat washer Gray P. and (1) 5/16" spring lock washer Gray P. Then attach the auxiliary bracket to the front bracket using (2) 5/16" carriage head bolt Black P., (2) 5/16" flat washers Black P., (2) 5/16" spring lock washers Black P. and (2) 5/16" hex nuts Black P. Leave loose for final adjustment. (**Photo 3**)



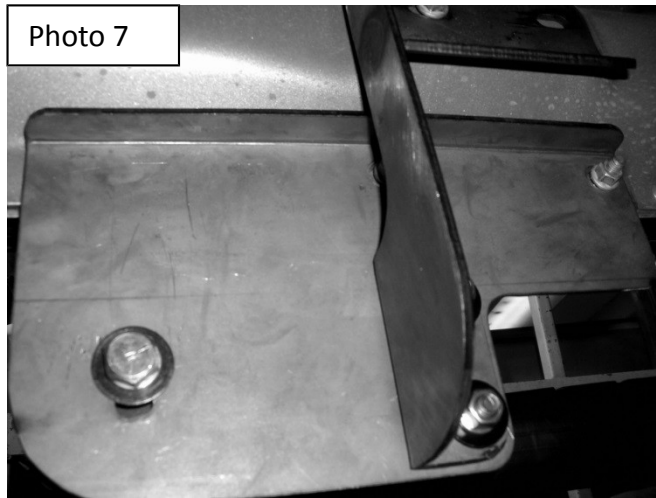
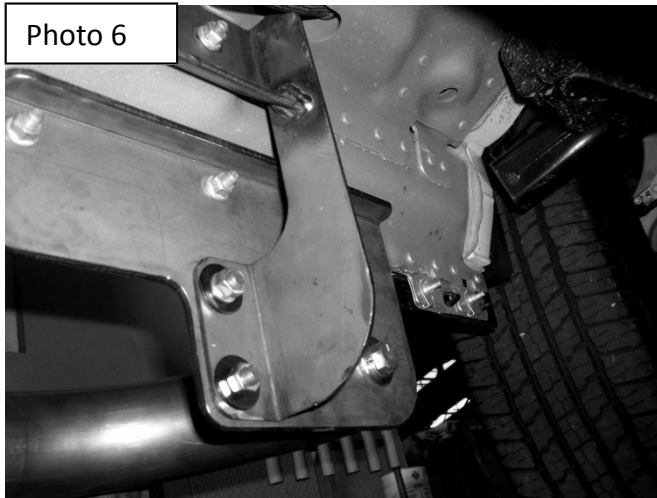
3. Repeat steps 1 and 2 to install the rear bracket at the rear of the cab. **(Photo 4)**



4. Locate the M8 welded bolts in the rocker panel at the middle of the cab and install the center bracket using (3) 5/16" flat washers Gray P., (3) 5/16" spring lock washers Gray P. and (3) M8 hex nut Gray P. Leave the nuts loose for final adjustment. **(Photo 5)**



5. Attach the side bar to the front and rear bracket using (2) 1/2" x 2" hex bolts, (2) 1/2" flat washers and (2) 1/2" spring lock washers. Leave the nuts loose for final adjustment. **(Photo 6 & 7)**



6. Attach the side bar to the center bracket using (1) 5/16" x 1" hex bolt Black P., (1) 5/16" flat washer Black P. and (1) 5/16" spring lock washer Black P. Leave the nuts loose for final adjustment. **(Photo 8)**



7. Align the side bar with the vehicle and tighten all brackets and side bar nuts and bolts. **(Photo 9)**



8. Repeat the above process to install the passenger side brackets and side bar.