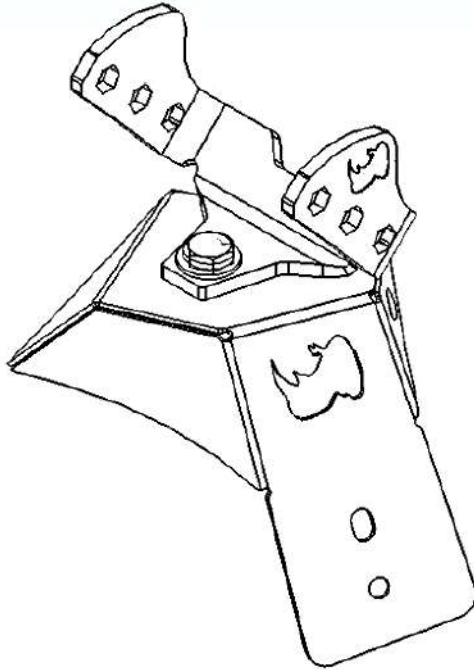


GO RHINO®

INSTALLATION INSTRUCTIONS



PART NO.

- 730035T

PRODUCT DESCRIPTION:

- HOOD LATCH LIGHT POD MOUNT KIT

APPLICATION:

- JEEP WRANGLER JL

PRODUCT SAFETY & LEGAL DISCLAIMER

- **IMPORTANT READ ALL INSTRUCTIONS CAREFULLY BEFORE INSTALLING, FAILURE TO DO SO MAY CAUSE PERSONAL INJURY OR DAMAGE TO PRODUCT AND/OR PROPERTY.**
- **Review the product package and contents prior to beginning the installation.** Take care when opening the packaging and removing items. If a return is needed you will want to return the product in its original packaging if possible.
- This instruction guide is provided as a GENERAL installation guide, some vehicles vary dimensionally and may require additional steps.
- Test fit the product on the vehicle prior to any third party modifications and or finishing. The manufacturer and/or distributors do not accept responsibility for third party charges, labor and or third part replacement modifications. Some modifications may void the factory warranty.
- Exercise due-diligence when installing this product. The manufacturer and distributors of this product do not accept any responsibility for vehicle damage or personal injury resulting from the installation of this product. Careless installation and operation can result in serious injury or equipment damage.
- This product is for general off-road use. All liability for installation and use rests with the owner/operator.
- **INSTALLER:** Once installation is complete, please return this guide along with other documentation included in this product back to the consumer for future reference. The manufacturer/distributors of this product do not guarantee this particular version will be available at a later date.



INSTALLATION INSTRUCTIONS

INJURY HAZARD

Please complete a shop and tool inspection prior to beginning the installation.

- Always make sure you have a clean, dry and well lit work area.
- Always remove jewelry, loose fitting clothing and wear protective gloves and eye protection.
- Always use extreme caution when jacking or raising a vehicle for work. Set the emergency brake and use tire/wheel blocks and jack stands. Refer to the vehicle manufacturer hand book. Utilize the vehicle manufacturers designated lifting points.
- Always use appropriate and adequate care in lifting parts during disassembly and installation. Seek help in lifting heavy or large items into place. Utilize jacks and or lifting devices when available.
- Always insure products are secure during disassembly and installation.
- Always wear eye protection and take steps to protect any exposed skin during the installations. Drilling, cutting and grinding plastic and metal may create flying particles that can cause injury.
- Always use extreme caution when drilling, cutting and or grinding on a vehicle. Thoroughly inspect the area to be drilled, on both sides of material, prior to modification and relocate any objects that may become damaged.
- Always assemble and tighten all fasteners per the installation instructions.
- Always route electrical cables carefully. Avoid moving parts, parts that may become hot and rough or sharp edges.
- Always insulate and protect all exposed wiring and electrical connections.

MAINTENANCE AND CARE

- Always perform regular inspections and maintenance on mounts and related fasteners.
- Periodically check and tighten all fasteners.
- Stripped, fractured, or bent fasteners must be replaced.
- After washing the vehicle make sure to fully dry all surfaces.
- In areas with cold temperatures make sure to wash the product often to remove harmful materials used on road ways.
- Never use abrasive cleaners or polish compounds. Clean with a gentle soap and water. If you use wax use a non-abrasive automotive wax such as pure carnauba wax.

WARNING

Some products have been designed to work together with factory rear sensor systems, factory forward facing sensor systems and factory air bags.

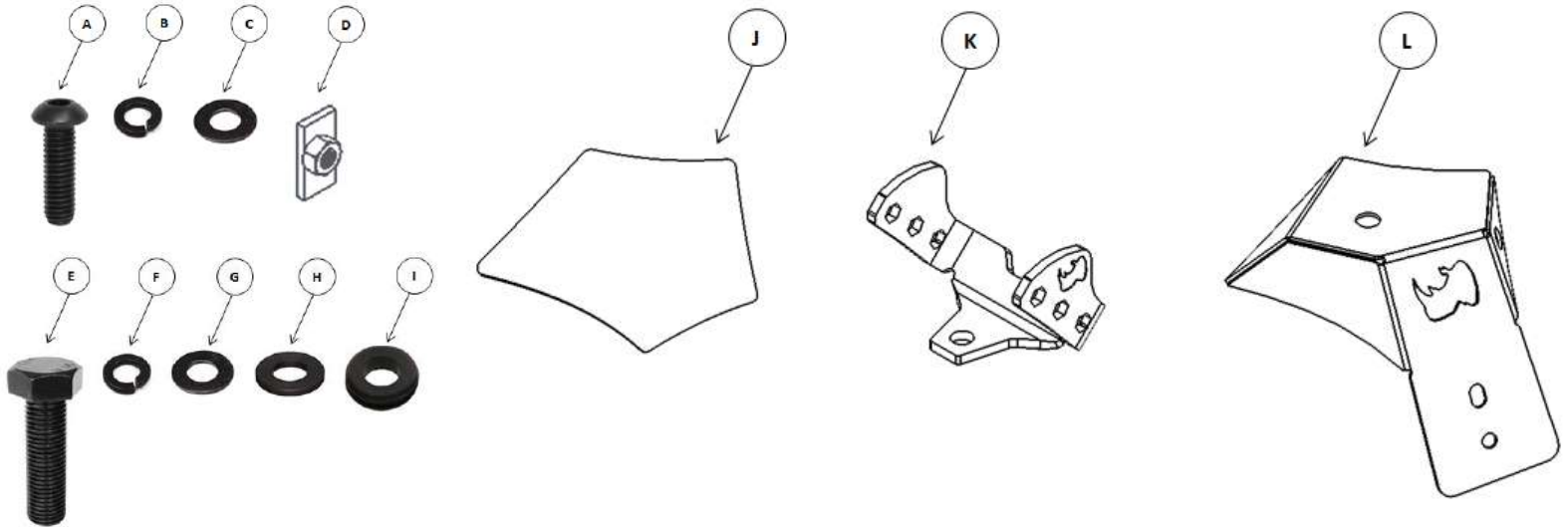
- Installation of some of these products may alter the factory sensor system performance.
- Factory sensors may read shackles or hooks protruding from the fairlead and or tow hooks.
- All sensor testing is completed by Go Rhino Products and or third party testing labs on modified vehicles.
- Sensor sensitivity, factory sensor housing, orientation, and operating conditions are all variables that will influence functionality of the sensors.
- Installation of some product may effect the factory air bag systems.
- Some products allow the use of third party products such as winches, shackles, hooks, etc. Follow the respective manufacturers operating instructions for use with our products.
- Make sure to fully understand the product, it's intended use and operation prior to use.
- Above all... be safe!

GO RHINO®

INSTALLATION INSTRUCTIONS

PARTS INCLUDED IN THIS LIST:

ITEM	QTY.	DESCRIPTION	ITEM	QTY.	DESCRIPTION
A	4	M6 x 30mm Button Head Hex Drive Screw	G	2	5/16" Flat Washer
B	4	1/4" Lock Washer	H	2	5/16" Flat Washer (Plastic)
C	4	1/4" Flat Washer	I	4	Rubber Grommet
D	4	M6 Nut Plate	J	1Pr.	Gasket (driver side shown)
E	2	5/16" x 3/4" Hex Head Screw	K	2	Light Bracket
F	2	5/16" Lock Washer	L	1 Pr.	Hood Latch Mount Bracket (driver side shown)



Go Rhino recommends you, the installer, read this installation instruction manual from front to back before installing the product.

TOOLS NEEDED FOR INSTALLATION:

- 10mm & 1/2" Socket & Wrench
- Ratchet & Extension
- 5/32" Hex key
- Drill Motor & Drill Bit

ESTIMATED TIME FOR INSTALLATION:

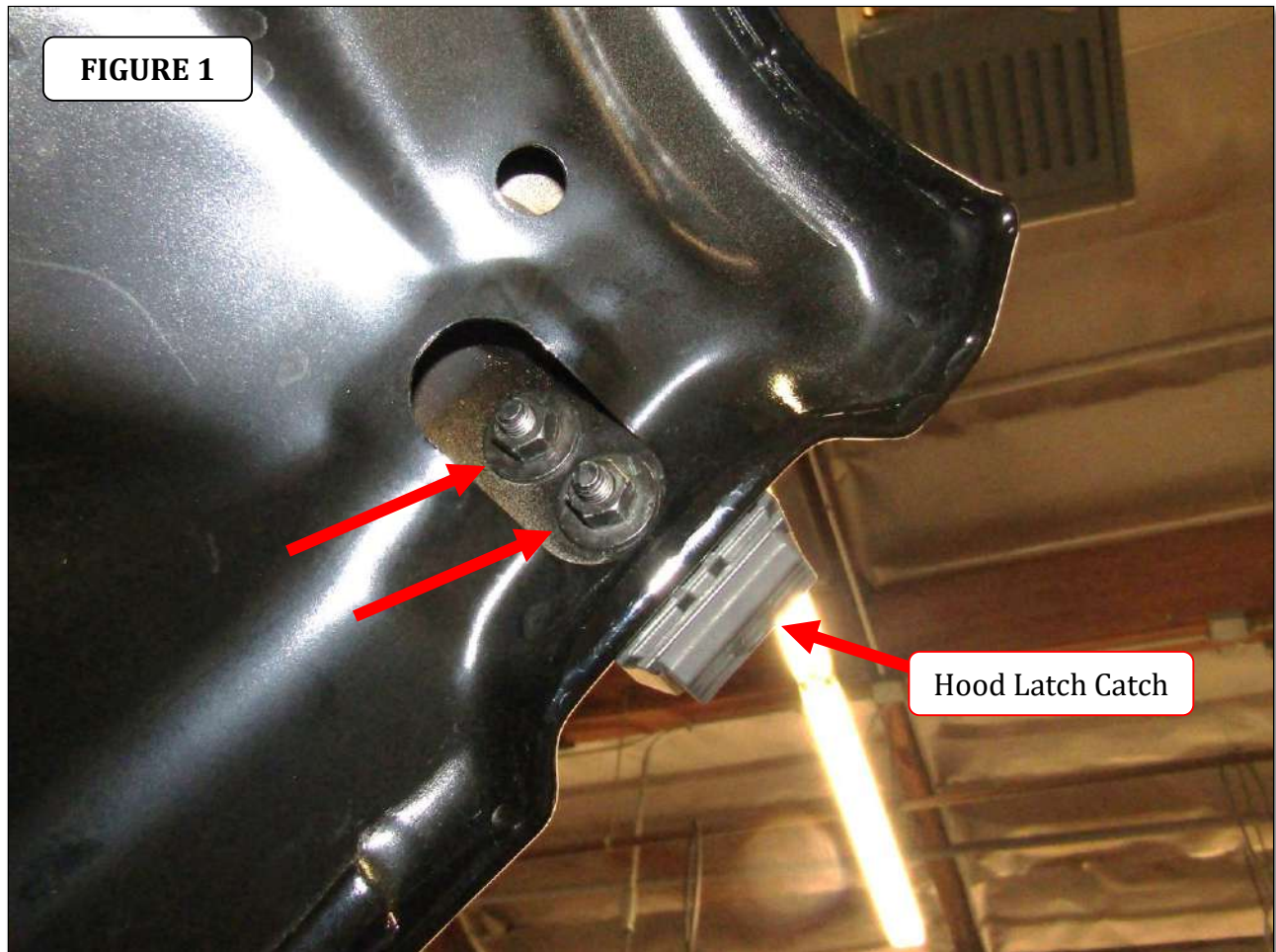
1 Hour

GO RHINO®

INSTALLATION INSTRUCTIONS

Step-1 Open the hood and position the hood prop rod.

Step-2 Beginning on the driver side use a 10mm socket and remove the (2) nut and washer assemblies securing the hood catch to the hood, (FIGURE 1).



GORRHINO®

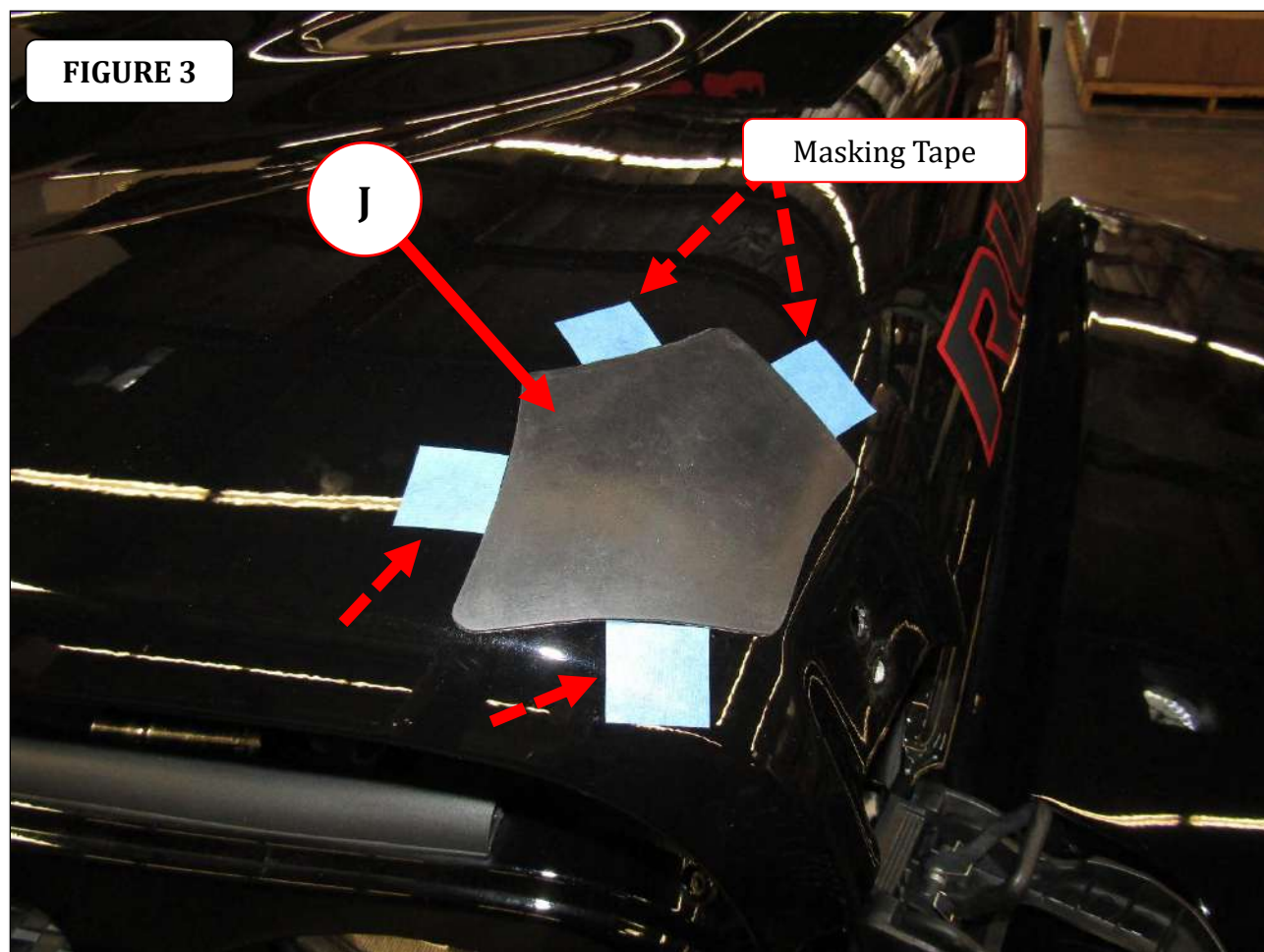
INSTALLATION INSTRUCTIONS

Step-7 Remove the nuts, hood latch mount bracket and gasket from the hood.

Step-8 Prepare the surface where the rubber gasket will be applied with Isopropyl alcohol. A clean, dry surface is required in order for adhesive to stick properly.

Step-9 Remove the paper backing from the gasket. With the adhesive down, align the gasket with the masking tape reference points, and stick the gasket in place on the hood, (Figure 3).

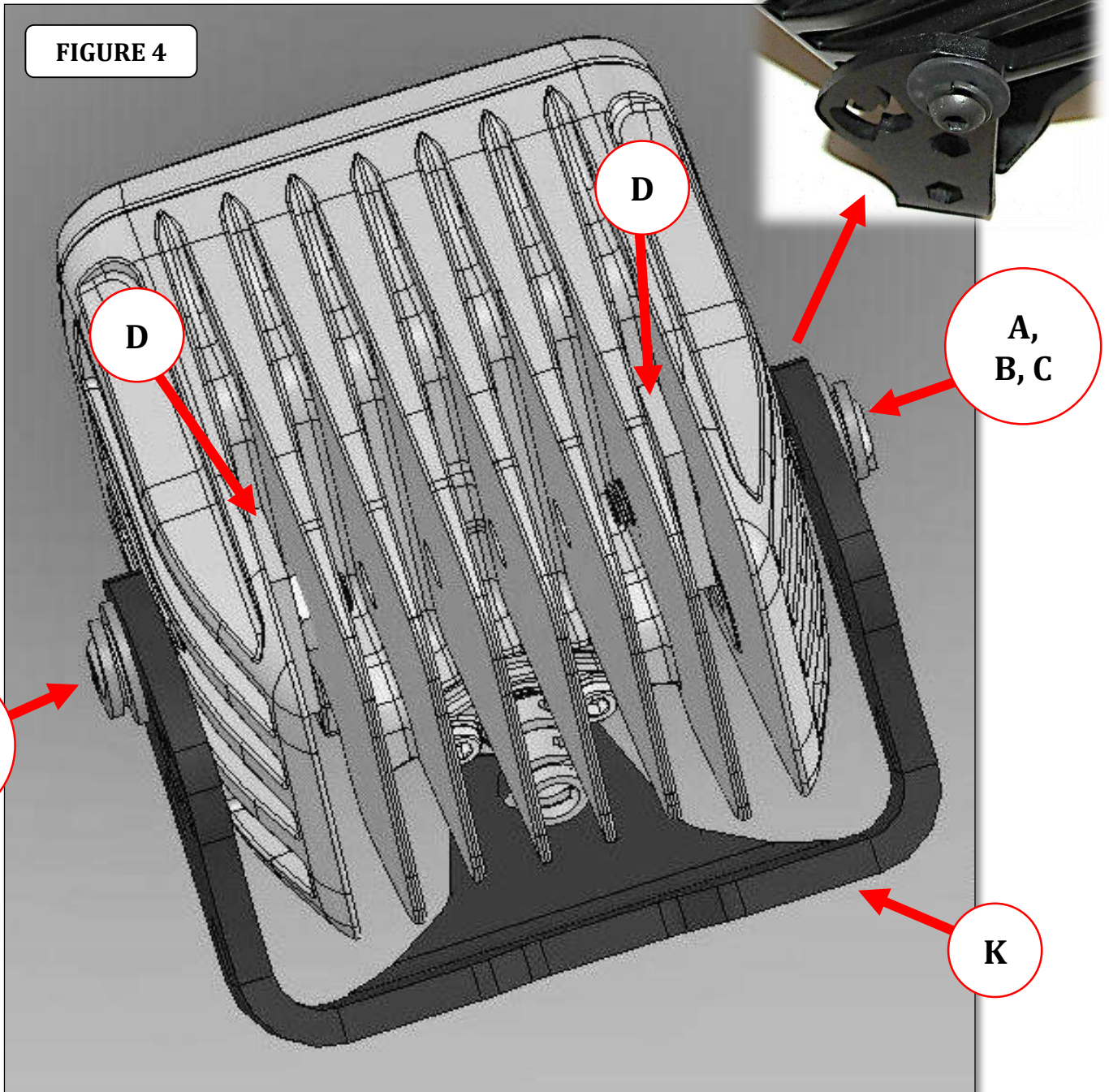
Step-10 Apply firm pressure for about 30 seconds, as the adhesive needs to bond with the mounting surface, and it needs pressure to do this.



GO RHINO®

INSTALLATION INSTRUCTIONS

Step-11 Position the LED light on the light bracket, and attach the light to the bracket using (2) M6 nut plates, (2) M6 x 30mm button head hex drive screws, (2) ¼" lock washers and (2) ¼" flat washers, (FIGURE 4).



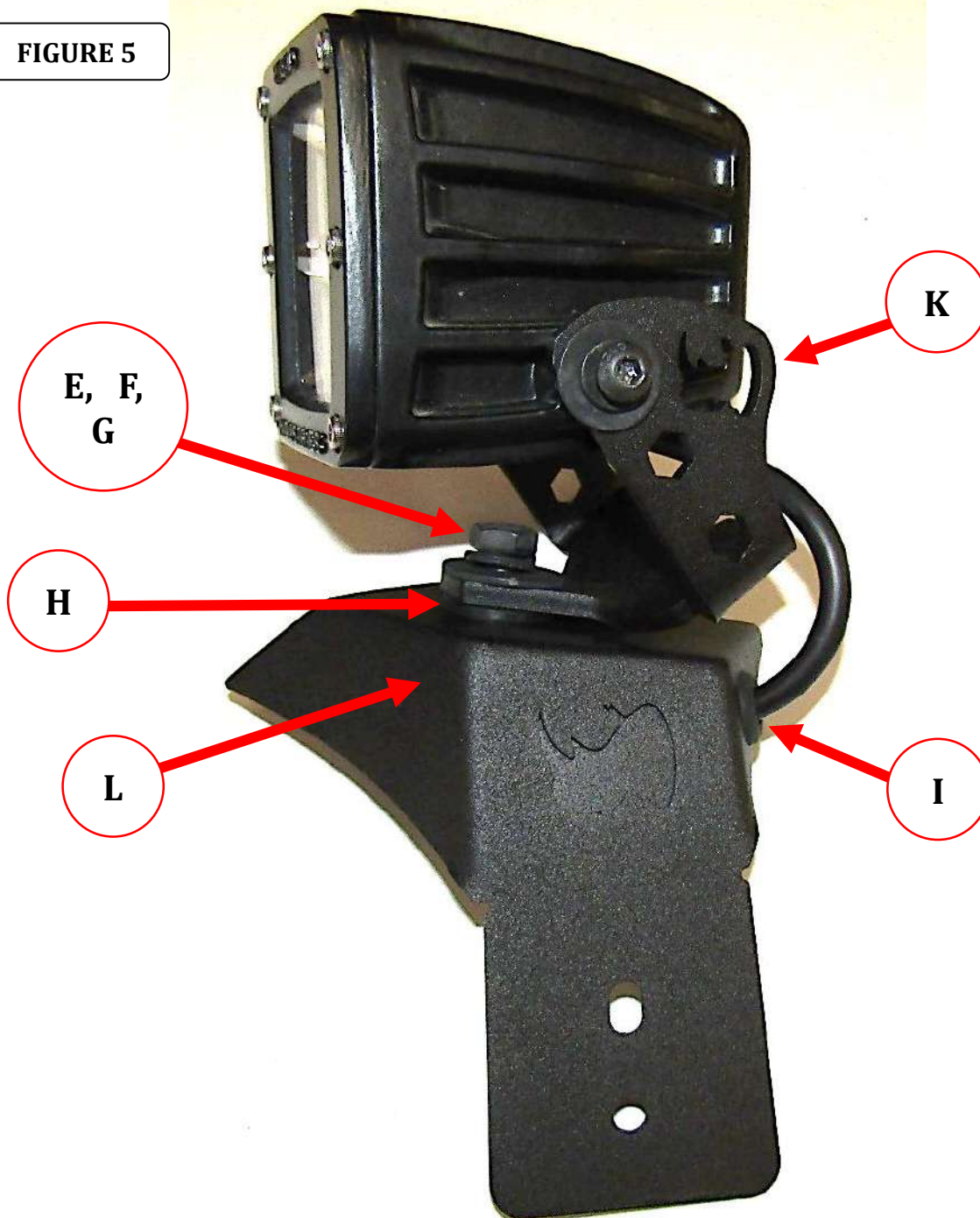


INSTALLATION INSTRUCTIONS

Step-12 Position (1) 5/16" plastic flat washer on top of the hood mount latch bracket. Position the light bracket on top of the 5/16" plastic flat washer, align the holes in the brackets with the plastic flat washer, and secure the light bracket to the hood mount latch bracket using (1) 5/16" X 3/4" hex bolt, (1) 5/16" lock washer and (1) 5/16" flat washer, (FIGURE 5). Snug but do not tighten the bolt.

Step-13 Install (1) rubber grommet in the hole provided in the hood mount latch bracket. Cut and remove the connector from the LED light wiring and insert the wire through the grommet, (FIGURE 5).

FIGURE 5



GO RHINO®

INSTALLATION INSTRUCTIONS

Step-14 Drill an appropriate size hole through the rubber gasket, and hood for the LED light wiring to pass through.

Step-15 Fish the LED light wire through the hole in the gasket and hood, then align the holes in the hood mount latch bracket with the holes in the hood, and reinstall the hood latch catch and OEM nuts to secure the bracket and catch in place, (FIGURE 6). Tighten the nuts.



Step-16 Repeat the above steps to install the LED light and bracket assembly on the passenger side of the vehicle.

Step-17 Reference the installation instructions included with the LED lights to complete the wiring.

Check out the collection of off-road lights we offer.