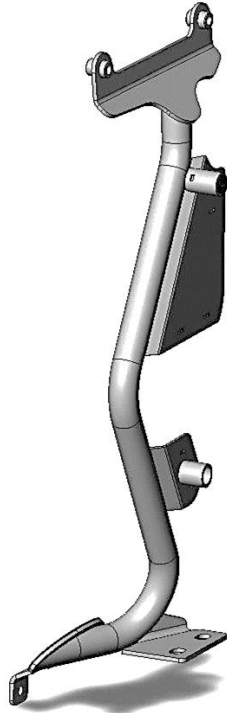


GO RHINO®

INSTALLATION INSTRUCTIONS



PART NO.

- 701001T

PRODUCT DESCRIPTION:

- JACK MOUNT

APPLICATION:

- JEEP WRANGLER JL & GLADIATOR JT

PRODUCT SAFETY & LEGAL DISCLAIMER

- **IMPORTANT READ ALL INSTRUCTIONS CAREFULLY BEFORE INSTALLING, FAILURE TO DO SO MAY CAUSE PERSONAL INJURY OR DAMAGE TO PRODUCT AND/OR PROPERTY.**
- **Review the product package and contents prior to beginning the installation.** Take care when opening the packaging and removing items. If a return is needed you will want to return the product in its original packaging if possible.
- This instruction guide is provided as a GENERAL installation guide, some vehicles vary dimensionally and may require additional steps.
- Test fit the product on the vehicle prior to any third party modifications and or finishing. The manufacturer and/or distributors do not accept responsibility for third party charges, labor and or third part replacement modifications. Some modifications may void the factory warranty.
- Exercise due-diligence when installing this product. The manufacturer and distributors of this product do not accept any responsibility for vehicle damage or personal injury resulting from the installation of this product. Careless installation and operation can result in serious injury or equipment damage.
- This product is for general off-road use. All liability for installation and use rests with the owner/operator.
- **INSTALLER:** Once installation is complete, please return this guide along with other documentation included in this product back to the consumer for future reference. The manufacturer/distributors of this product do not guarantee this particular version will be available at a later date.



INSTALLATION INSTRUCTIONS

INJURY HAZARD

Please complete a shop and tool inspection prior to beginning the installation.

- Always make sure you have a clean, dry and well lit work area.
- Always remove jewelry, loose fitting clothing and wear protective gloves and eye protection.
- Always use extreme caution when jacking or raising a vehicle for work. Set the emergency brake and use tire/wheel blocks and jack stands. Refer to the vehicle manufacturer hand book. Utilize the vehicle manufacturers designated lifting points.
- Always use appropriate and adequate care in lifting parts during disassembly and installation. Seek help in lifting heavy or large items into place. Utilize jacks and or lifting devices when available.
- Always insure products are secure during disassembly and installation.
- Always wear eye protection and take steps to protect any exposed skin during the installations. Drilling, cutting and grinding plastic and metal may create flying particles that can cause injury.
- Always use extreme caution when drilling, cutting and or grinding on a vehicle. Thoroughly inspect the area to be drilled, on both sides of material, prior to modification and relocate any objects that may become damaged.
- Always assemble and tighten all fasteners per the installation instructions.
- Always route electrical cables carefully. Avoid moving parts, parts that may become hot and rough or sharp edges.
- Always insulate and protect all exposed wiring and electrical connections.

MAINTENANCE AND CARE

- Always perform regular inspections and maintenance on mounts and related fasteners.
- Periodically check and tighten all fasteners.
- Stripped, fractured, or bent fasteners must be replaced.
- After washing the vehicle make sure to fully dry all surfaces.
- In areas with cold temperatures make sure to wash the product often to remove harmful materials used on road ways.
- Never use abrasive cleaners or polish compounds. Clean with a gentle soap and water. If you use wax use a non-abrasive automotive wax such as pure carnauba wax.

WARNING

Some products have been designed to work together with factory rear sensor systems, factory forward facing sensor systems and factory air bags.

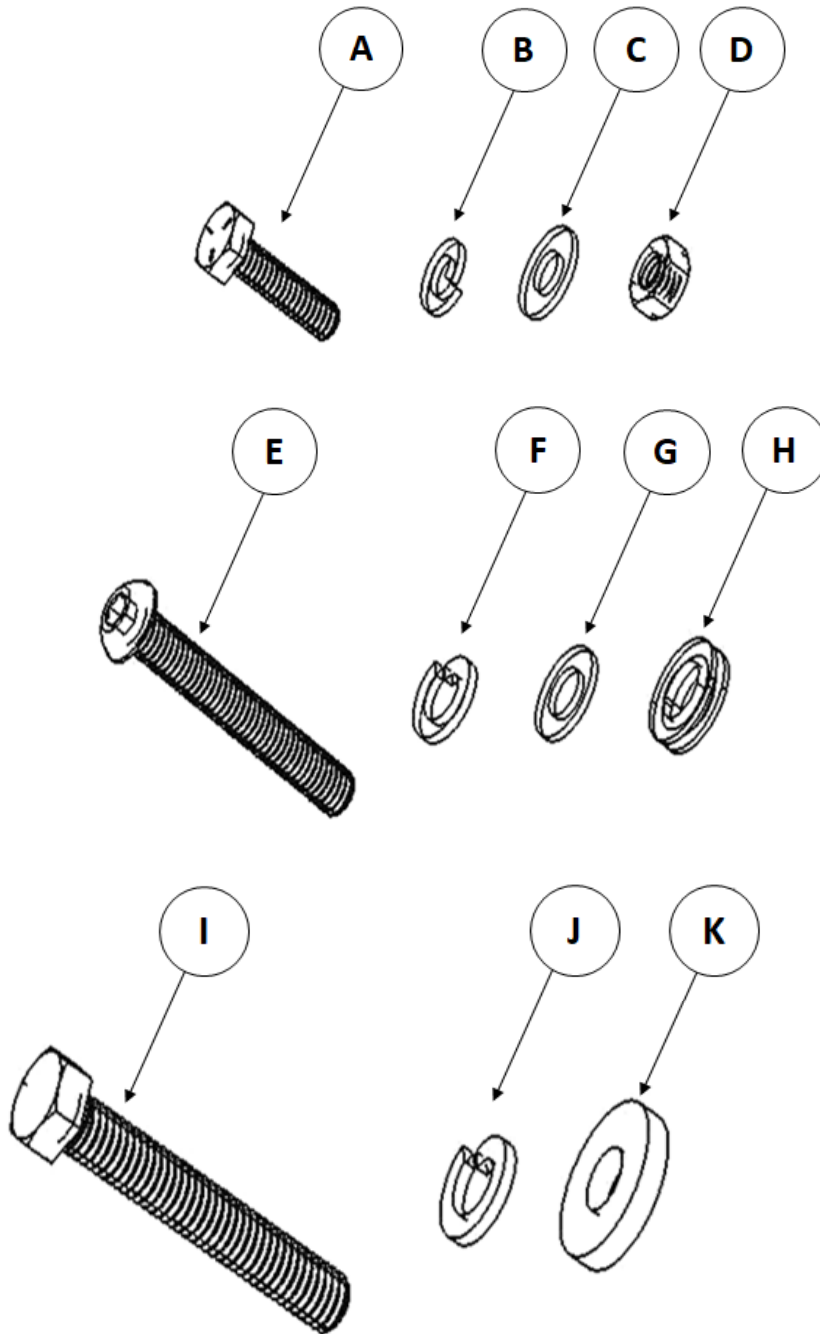
- Installation of some of these products may alter the factory sensor system performance.
- Factory sensors may read shackles or hooks protruding from the fairlead and or tow hooks.
- All sensor testing is completed by Go Rhino Products and or third party testing labs on modified vehicles.
- Sensor sensitivity, factory sensor housing, orientation, and operating conditions are all variables that will influence functionality of the sensors.
- Installation of some product may effect the factory air bag systems.
- Some products allow the use of third party products such as winches, shackles, hooks, etc. Follow the respective manufacturers operating instructions for use with our products.
- Make sure to fully understand the product, it's intended use and operation prior to use.
- Above all... be safe!



INSTALLATION INSTRUCTIONS

PARTS INCLUDED IN THIS LIST:

ITEM	QTY.	DESCRIPTION	ITEM	QTY.	DESCRIPTION
A	1	1/4" x 1" Hex Head Screw	G	2	M8 Flat Washer
B	1	1/4" Lock Washer	H	2	Rubber Flat Washer
C	2	1/4" Flat Washer	I	2	3/8" x 2 1/2" Hex Head Screw
D	1	1/4" Hex Nut	J	2	3/8" Lock Washer
E	2	M8 x 55MM Button Head Hex Drive Screw	K	4	Spacer Washer
F	2	M8 Lock Washer			

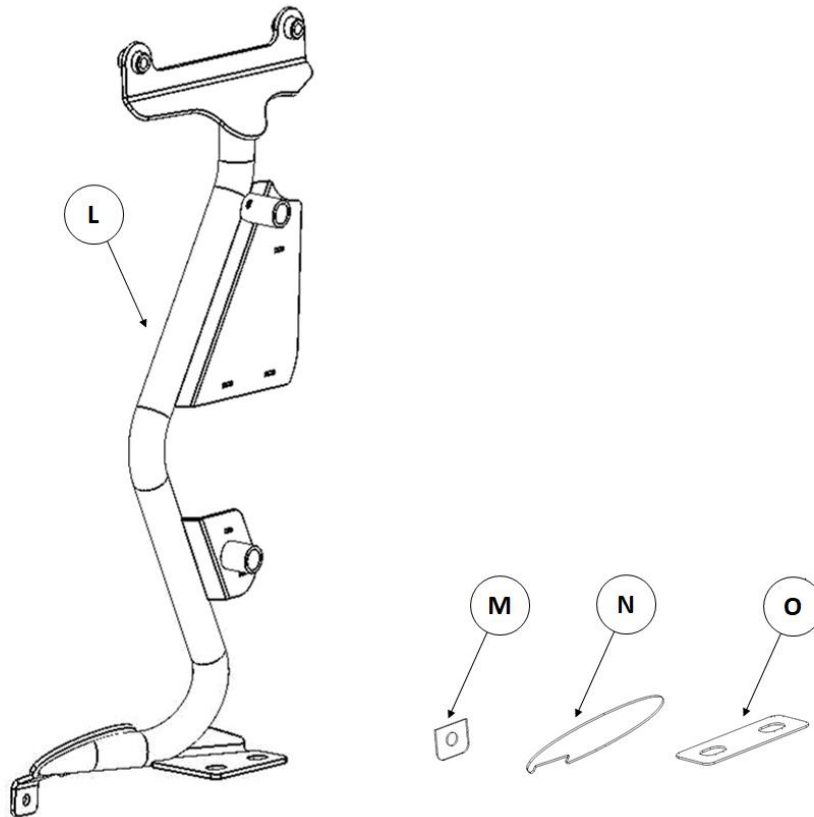


GO RHINO®

INSTALLATION INSTRUCTIONS

PARTS INCLUDED IN THIS LIST:

ITEM	QTY.	DESCRIPTION	ITEM	QTY.	DESCRIPTION
L	1	Jack Mount	N	1	Fender Isolation Gasket
M	1	Pinch Weld Isolation Gasket	O	1	Jack Base Isolation Gasket



Go Rhino recommends you, the installer, read this installation instruction manual from front to back before installing the product.

TOOLS NEEDED FOR INSTALLATION:

- 7/16" & 9/16" Wrench
- 7/16", 9/16" & 10mm Socket
- T40 Torx Bit & 5mm Hex Bit Socket
- Ratchet

ESTIMATED TIME FOR INSTALLATION:

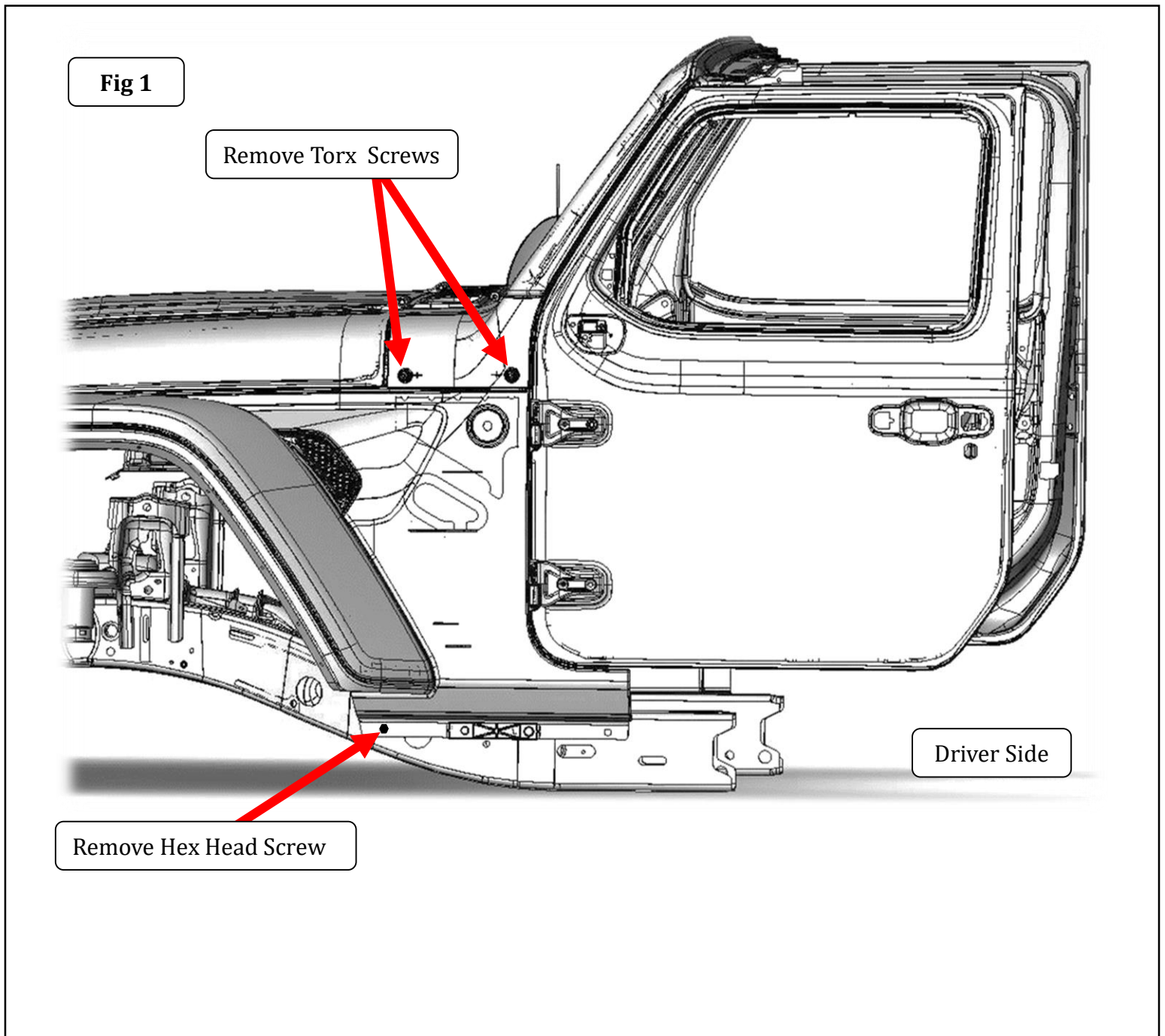
1 Hour

GO RHINO®

INSTALLATION INSTRUCTIONS

Step-1 On the driver side of the vehicle, use a T-50 Torx bit socket and remove the (2) Torx screws securing the cowl, (Fig 1). Discard the Torx screws.

Step-2 Using a 10mm socket, remove (1) hex head screw securing the fender to the body pinch weld, (Fig 1). Retain the hex head screw.

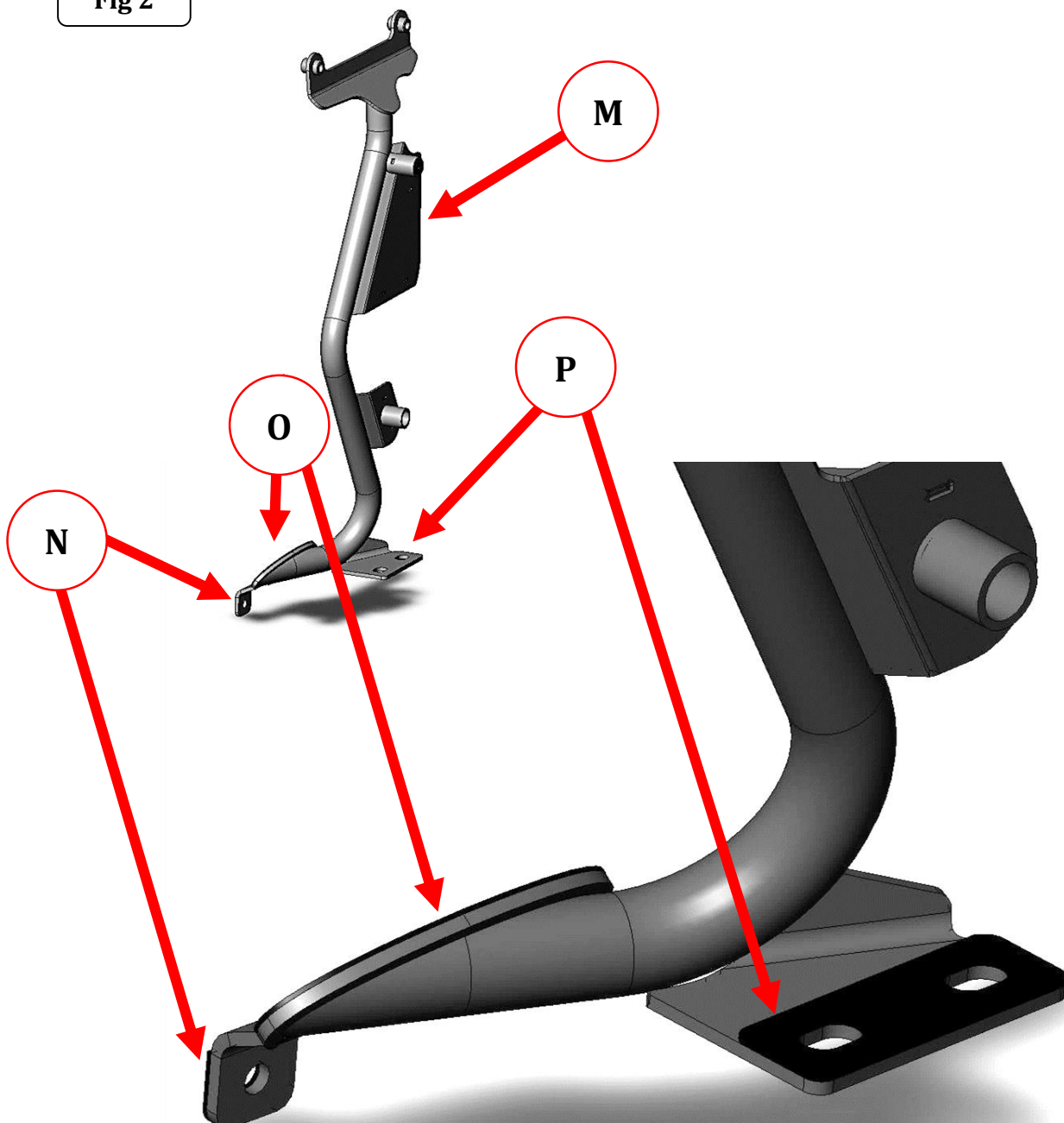


GORRHINO[®]

INSTALLATION INSTRUCTIONS

Step-3 Remove the paper backing from the jack base isolator gaskets. With the adhesive side down, align the isolator gaskets with the bracket on the jack mount, and stick the gasket in place on the bracket, (Fig 2). Apply firm pressure for about 30 seconds, as the adhesive needs to bond with the mounting surface, and it needs pressure to do this. Repeat for the pinch weld and fender isolator gaskets.

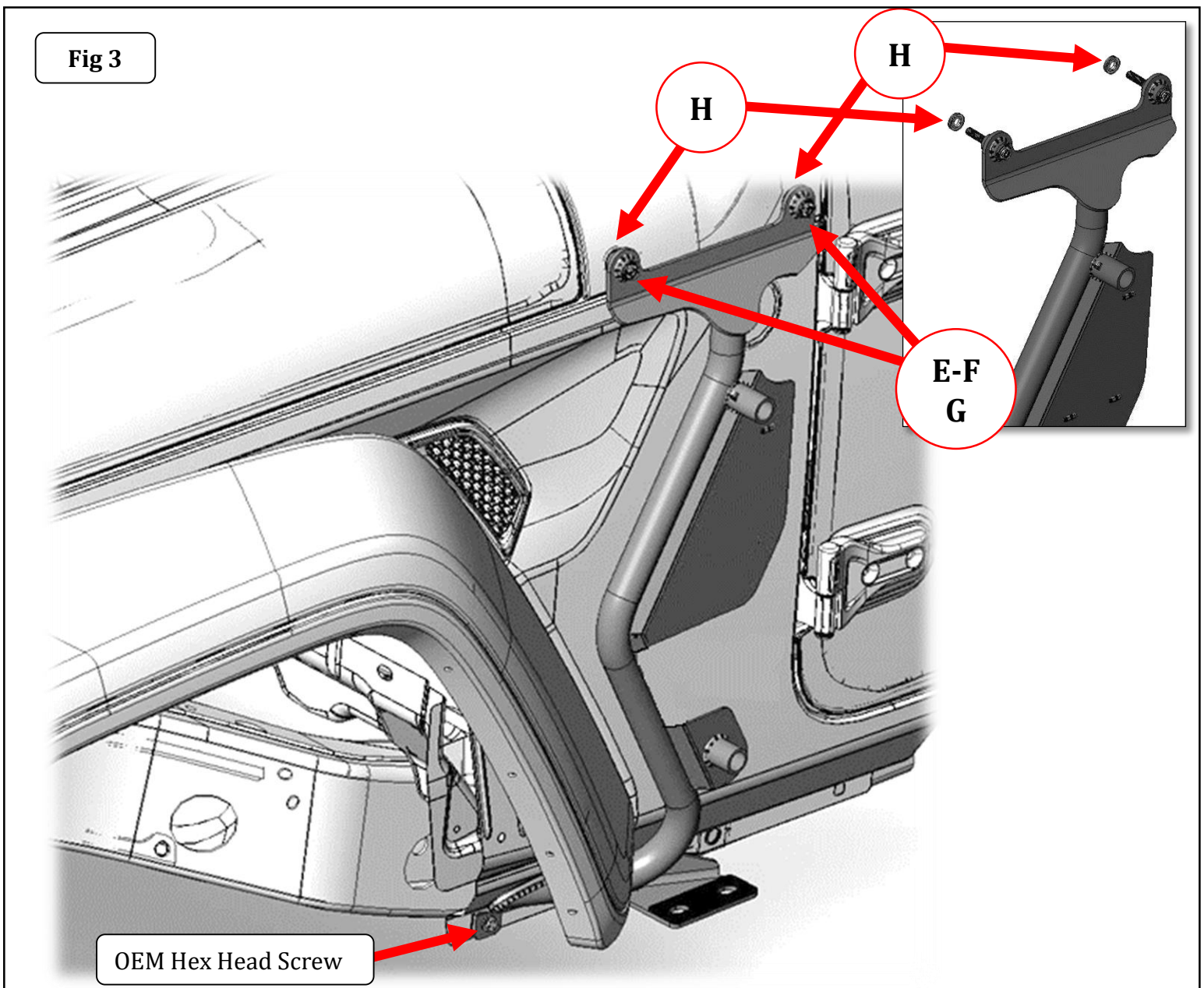
Fig 2



INSTALLATION INSTRUCTIONS

Step-4 Position the jack mount up to the side of the vehicle. Place a rubber flat washer in each recessed hole in the cowl, align the hole in the spacers on the jack mount with the rubber flat washers and the cowl attachment holes then secure the jack mount and the cowl to the vehicle using (2) M8 x 50mm button head hex drive screws, (2) M8 lock washers and (2) M8 flat washers (Fig 3).

Step-5 Align the hole in the tab at the bottom of the jack mount with the rivet-nut in the body pinch weld and attach the jack mount to the pinch weld using the OEM hex head screw removed in step 2, (Fig 3). Securely tighten the OEM screw and supplied M8 screws. Note: If your vehicle does not have the rivet-nut in the pinch weld, attach the tab at the bottom of the jack mount to the pinch weld using the 1/4" x 1" hex head screw, 1/4" flat washers, 1/4" lock washer and 1/4" hex nut supplied.

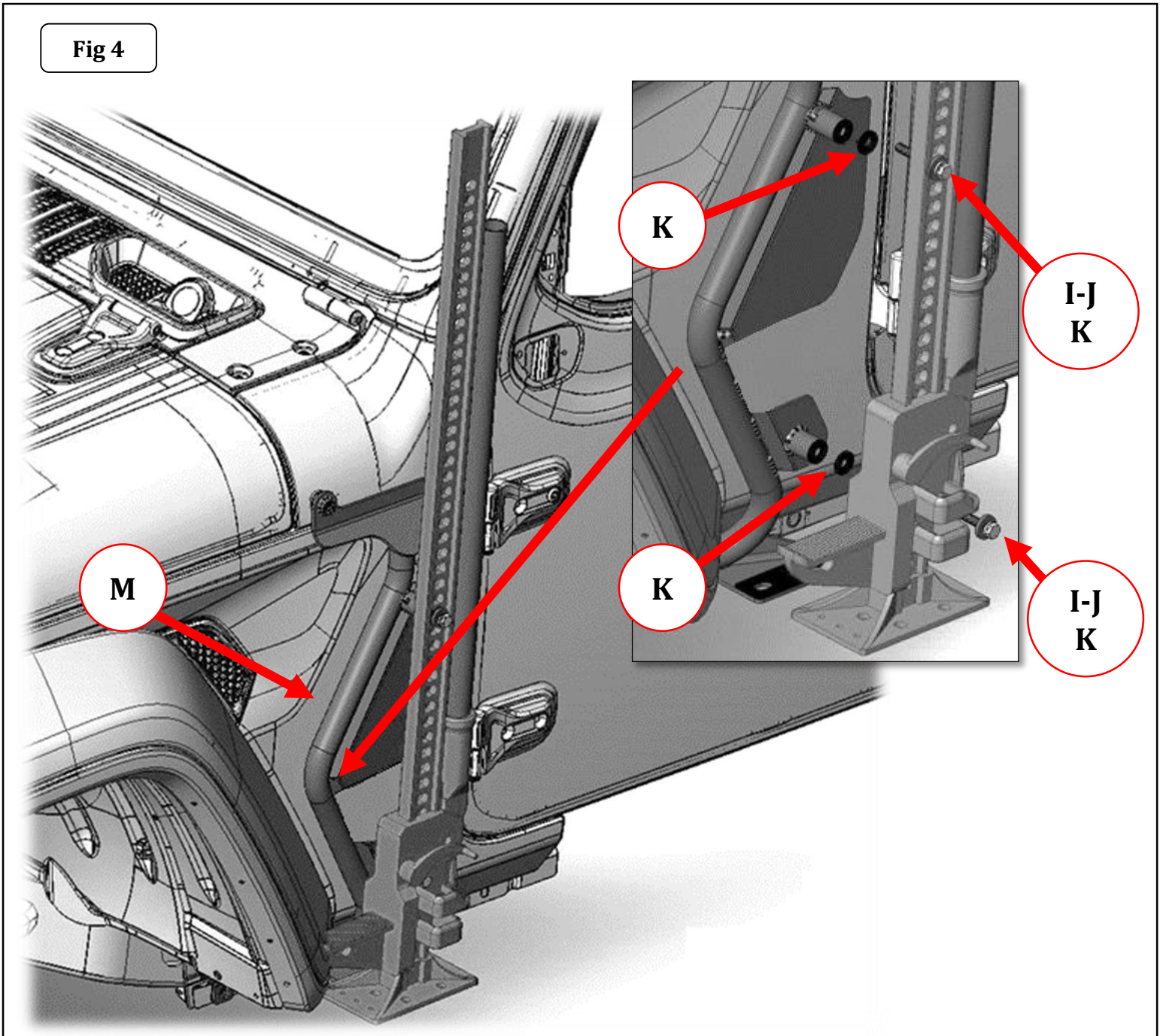


GO RHINO®

INSTALLATION INSTRUCTIONS

Step-6 Place the Jack base plate onto the jack mount. Align the holes in the jack steel bar with the jack mount spacer tubes and attach the jack steel bar to each weld nut inside the jack mount spacer tube using (1) 3/8" x 2 1/2" hex head screw, (1) 3/8" lock washer and (2) spacer washers, (Fig 4). Securely tighten the 3/8" screws.

Fig 4



GO RHINO®

INSTALLATION INSTRUCTIONS

