

69429980

**INSTALLATION INSTRUCTIONS
DODGE RAM 1500 QUAD CAB**

Parts List					Required Tools (Not included)													
Item	Qty.	Code	Description	Max. Torque	Qty.	Description												
1	1 Set		Running Board Passenger & Driver	-	1	9/16" Socket & Wrench												
				-	1	13mm Socket & Wrench												
2	1		HARDWARE BRACKETS KIT INCLUDES:	-	1	Ratchet												
3	6 Piece	6300874BA	U bracket	-	1	Ratchet extension												
4	1 Set	6342994AA	Front bracket	-	<table border="1"> <thead> <tr> <th colspan="2">Product Image</th> </tr> </thead> <tbody> <tr> <td align="center">4</td> <td>Front Driver</td> </tr> <tr> <td align="center">5</td> <td>Middle Driver</td> </tr> <tr> <td align="center">6</td> <td>Rear Driver</td> </tr> <tr> <td align="center">7</td> <td></td> </tr> <tr> <td align="center">3</td> <td></td> </tr> </tbody> </table>		Product Image		4	Front Driver	5	Middle Driver	6	Rear Driver	7		3	
Product Image																		
4	Front Driver																	
5	Middle Driver																	
6	Rear Driver																	
7																		
3																		
5	1 Set	6340994AA	Central Bracket	-														
6	1 Set	6940990AA	Rear bracket	-														
7	6 Piece	372240BA	3/8" Bolt plate	30 Lb.Ft														
8	1	KTE-634206	HARDWARE BOLTS KIT INCLUDES:	-														
9	12 Piece	-	M8 x 25mm Hex head bolt	30 Lb.Ft														
10	12 Piece	-	5/16" Flat washer	-														
11	12 Piece	-	5/16" Lock washer	-														
12	12 Piece	-	5/16 x 1" Hex head bolt black zinc	30 Lb.Ft														
13	12 Piece	-	5/16" Flat washer black zinc	-														
14	12 Piece	-	5/16" Lock washer black zinc	-														
15	6 Piece	-	Vinyl Gasket	-														
16	12 Piece	-	3/8 x 1" Hex head bolt	30 Lb.Ft														
17	18 Piece	-	3/8" Flat washer	-														
18	18 Piece	-	3/8" Lock washer	-														
19	6 Piece	-	3/8" hex nut	30 Lb.Ft														

Instructions

Do not attempt to install this product on any vehicle other than the one it is designed for and listed above!

1. Before beginning the installation, please read all directions carefully and verify that all necessary hardware is accounted for. If any parts are missing, stop the installation and contact your distributor immediately.

2. To maintain and care this product, keep it clean and do not use abrasive cleaners or polish waxes. We recommend to use only automotive wax such as pure carnauba to avoid scratches and rust.

3. The approximate installation time is 60 min.

4. This installation uses 3 brackets per side, **(Photo 1)**.

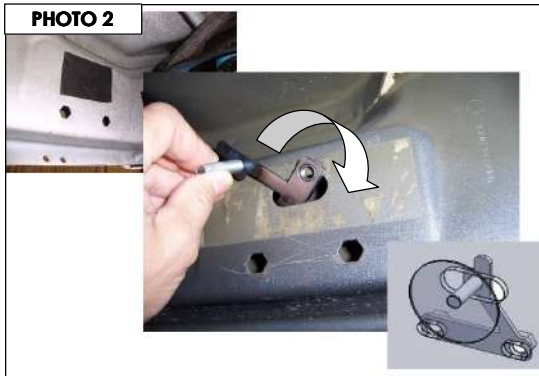
PHOTO 1



Front Bracket.

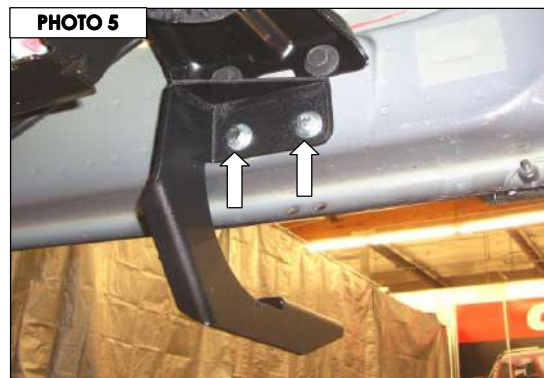
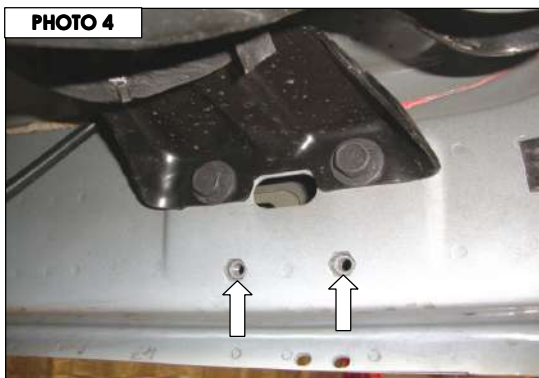
5. Begin the installation on the driver side of the vehicle.

6. If the vehicle has (2) hexagon shaped holes in the rocker panel at the front of the cab, remove the tape covering the obround hole in the rocker panel, and install (1) 3/8" T-Plate in the rocker panel and install (1) vinyl gasket over the threads to prevent the T-Plate from falling into the body, **(Photo 2)**. Align the nuts welded to the T-Plate with the hexagon holes in the rocker panel and attach the driver side front bracket to the rocker panel using the T-Plate (2) 3/8" X 1" hex bolts, (2) 3/8" flat washers and (2) 3/8" lock washers, **(Photo 3)**. Leave the bolts loose for final adjustment.



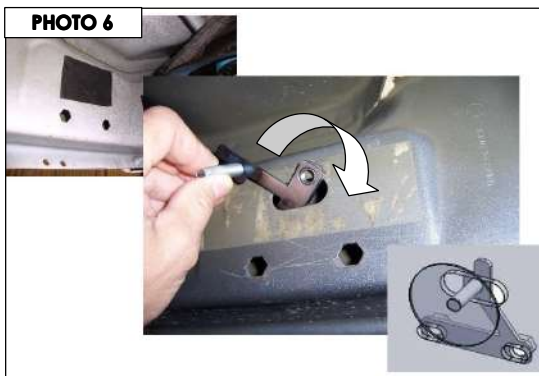
Front Bracket

7. If the vehicle has (2) M8 threaded inserts in the rocker panel at the front of the cab, **(Photo 4)**. Attach the driver side front bracket to the rocker panel using (2) M8 hex bolts, (2) 5/16" lock washers and (2) 5/16" flat washers, **(Photo 5)**. Leave the bolts loose for final adjustment.



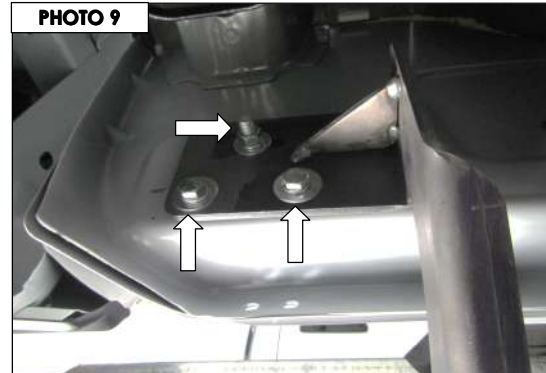
Center & Rear Bracket

8. If the vehicle has hexagon holes in the rocker panel at the center and rear of the cab, remove the tape covering the obround hole in the rocker panel, and install (1) 3/8" T-Plate in the rocker panel and install (1) vinyl gasket over the threads to prevent the T-Plate from falling into the body, **(Photo 6)**. Align the nuts welded to the T-Plate with the hexagon holes in the rocker panel and attach one of the (center/rear) brackets to the rocker panel using the T-Plate, (2) 3/8" X 1" hex bolts, (3) 3/8" flat washers, (3) 3/8" lock washers and (1) 3/8" hex nut, **(Photo 7)**. Leave the nut and bolts loose for final adjustment.

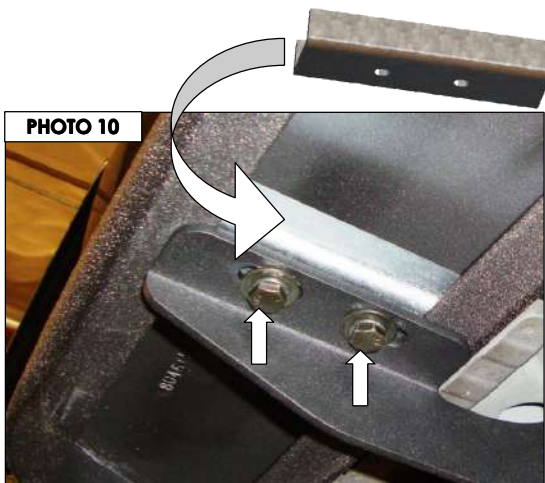


Center & Rear Bracket

9. If the vehicle has M8 threaded inserts in the rocker panel at the center and rear of the cab, remove the tape covering the obround hole in the rocker pane, and install (1) 3/8" T-Plate in the oblong hole in the rocker panel and install (1) vinyl gasket over the threads to prevent the T-Plate from falling into the body, **(Photo 8)**. Rotate the T-Plate so the nuts welded to the T-Plate clear the M8 threaded inserts in the rocker panel then attach one of the (center/rear) brackets to the rocker panel using the T-Plate (1) 3/8" flat washer, (1) 3/8" lock washer, (1) 3/8" hex nut, and (2) M8 hex bolts, (2) 5/16" lock washers and (2) 5/16" flat washers, **(Photo 9)**. Leave the nut and bolts loose for final adjustment.



10. Place the driver side running board on top of the mounting brackets. Position (3) of the U-brackets inside the running board body, and align the U-brackets with the holes in the brackets. Attach the running board to each mounting bracket using the U-bracket, (2) 5/16" hex head bolts, (2) 5/16" flat washers and (2) 5/16" lock washers, **(Photo 10)**.



11. Align the running board with the vehicle and tighten all supplied nuts and bolts securing the running board and bracket assembly, **(Photo 11)**. Repeat the installation steps to install the passenger side brackets and running board. Remember to check and retighten all bolts periodically.

12. Remember to check and repair the hardware periodically.