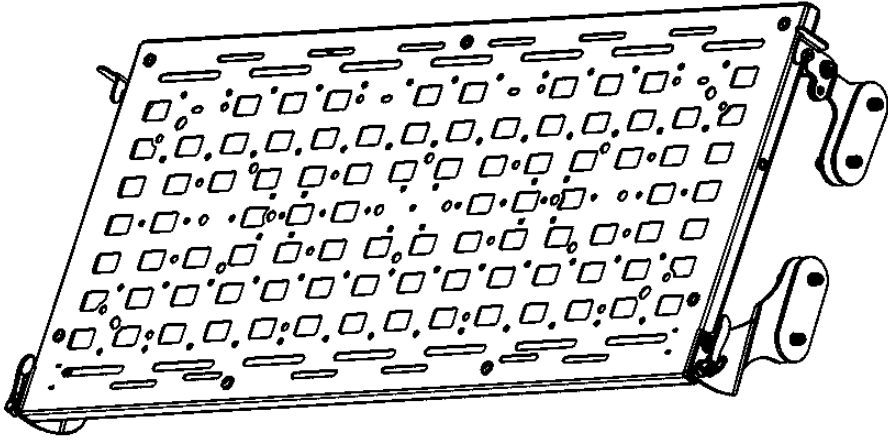


GO RHINO®

INSTALLATION INSTRUCTIONS

PART NO.

- 5950110T



PRODUCT DESCRIPTION:

- Overland Xtreme FOLDING GEAR TABLE

PRODUCT SAFETY & LEGAL DISCLAIMER

- **IMPORTANT READ ALL INSTRUCTIONS CAREFULLY BEFORE INSTALLING, FAILURE TO DO SO MAY CAUSE PERSONAL INJURY OR DAMAGE TO PRODUCT AND/OR PROPERTY.**
- **Review the product package and contents prior to beginning the installation.** Take care when opening the packaging and removing items. If a return is needed you will want to return the product in its original packaging if possible.
- This instruction guide is provided as a GENERAL installation guide, some vehicles vary dimensionally and may require additional steps.
- Test fit the product on the vehicle prior to any third party modifications and or finishing. The manufacturer and/or distributors do not accept responsibility for third party charges, labor and or third part replacement modifications. Some modifications may void the factory warranty.
- Exercise due-diligence when installing this product. The manufacturer and distributors of this product do not accept any responsibility for vehicle damage or personal injury resulting from the installation of this product. Careless installation and operation can result in serious injury or equipment damage.
- This product is for general off-road use. All liability for installation and use rests with the owner/operator.
- **INSTALLER:** Once installation is complete, please return this guide along with other documentation included in this product back to the consumer for future reference. The manufacturer/distributors of this product do not guarantee this particular version will be available at a later date.



INSTALLATION INSTRUCTIONS

INJURY HAZARD

Please complete a shop and tool inspection prior to beginning the installation.

- Always make sure you have a clean, dry and well lit work area.
- Always remove jewelry, loose fitting clothing and wear protective gloves and eye protection.
- Always use extreme caution when jacking or raising a vehicle for work. Set the emergency brake and use tire/wheel blocks and jack stands. Refer to the vehicle manufacturer hand book. Utilize the vehicle manufacturers designated lifting points.
- Always use appropriate and adequate care in lifting parts during disassembly and installation. Seek help in lifting heavy or large items into place. Utilize jacks and or lifting devices when available.
- Always insure products are secure during disassembly and installation.
- Always wear eye protection and take steps to protect any exposed skin during the installations. Drilling, cutting and grinding plastic and metal may create flying particles that can cause injury.
- Always use extreme caution when drilling, cutting and or grinding on a vehicle. Thoroughly inspect the area to be drilled, on both sides of material, prior to modification and relocate any objects that may become damaged.
- Always assemble and tighten all fasteners per the installation instructions.
- Always route electrical cables carefully. Avoid moving parts, parts that may become hot and rough or sharp edges.
- Always insulate and protect all exposed wiring and electrical connections.

MAINTENANCE AND CARE

- Always perform regular inspections and maintenance on mounts and related fasteners.
- Periodically check and tighten all fasteners.
- Stripped, fractured, or bent fasteners must be replaced.
- After washing the vehicle make sure to fully dry all surfaces.
- In areas with cold temperatures make sure to wash the product often to remove harmful materials used on road ways.
- Never use abrasive cleaners or polish compounds. Clean with a gentle soap and water. If you use wax use a non-abrasive automotive wax such as pure carnauba wax.

WARNING

Some products have been designed to work together with factory rear sensor systems, factory forward facing sensor systems and factory air bags.

- Installation of some of these products may alter the factory sensor system performance.
- Factory sensors may read shackles or hooks protruding from the fairlead and or tow hooks.
- All sensor testing is completed by Go Rhino Products and or third party testing labs on modified vehicles.
- Sensor sensitivity, factory sensor housing, orientation, and operating conditions are all variables that will influence functionality of the sensors.
- Installation of some product may effect the factory air bag systems.
- Some products allow the use of third party products such as winches, shackles, hooks, etc. Follow the respective manufacturers operating instructions for use with our products.
- Make sure to fully understand the product, it's intended use and operation prior to use.
- Above all... be safe!



INSTALLATION INSTRUCTIONS

PARTS INCLUDED IN THIS LIST

ITEM	QTY	DESCRIPTION
1	1	Gear Table
2	1	Lower Table Bracket (Pair)
3	1	Upper Latch Bracket (Pair)
4	4	Bracket Threaded Plates
5	2	Lanyard Cable
6	4	Spacers

HARDWARE INCLUDED IN THIS LIST

ITEM	QTY	DESCRIPTION	ITEM	QTY	DESCRIPTION
1	8	3/8" x 2 Hex Bolt	8	10	9/16 Plastic Washers
2	8	3/8 Flat Washer	9	4	#10-32 x 1/2" Button Head Bolt
3	8	3/8 Lock Washer	10	8	#10-32 Flat Washer
4	4	Shoulder Bolt (1/4" Length)	11	4	#10-32 Hex Nut
5	2	Shoulder Bolt(1/2" Length)	12	4	1 1/2" ABS Flat Washer
6	2	Shoulder Bolt(1 1/2" Length)	13	2	1/4 x 3/4" Button Head Screw
7	2	Foam Adhesive Pad	14	2	1/4 Flat Washer
			15	2	1/4 Lock Washer

Go Rhino recommends you, the installer, read this installation instruction manual from front to back before installing the product.

TOOLS NEEDED FOR INSTALLATION:

- 9/16" Wrench or Socket
- 4MM Allen Hex Key

ESTIMATED TIME FOR INSTALLATION:

1-1.5 Hours

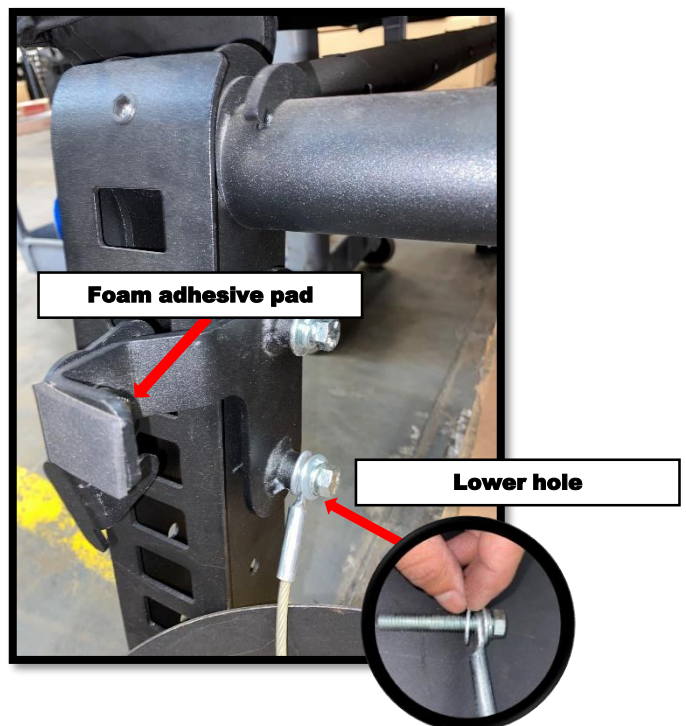
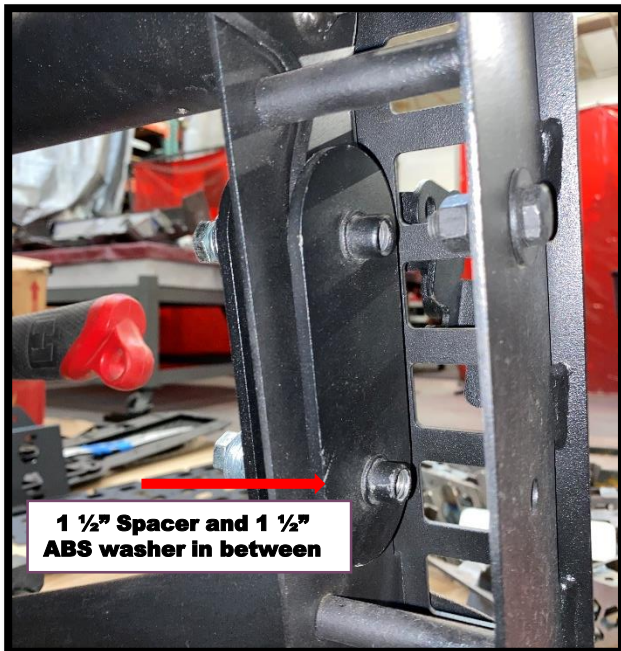
GORRHINO®

INSTALLATION INSTRUCTIONS



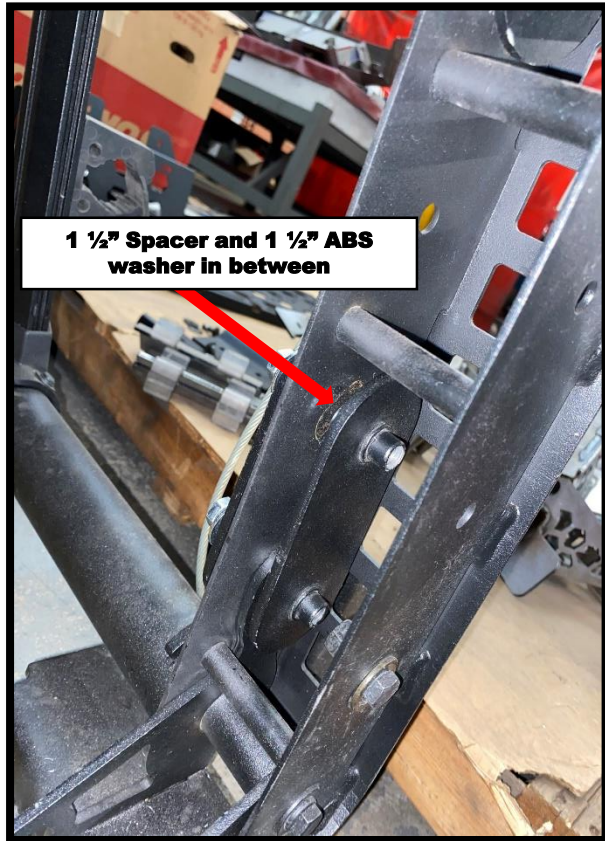
STEP # 1

- Assemble both upper latch brackets. You'll need upper bracket, latch, 2(qty) $\frac{9}{16}$ plastic washers, $\frac{1}{4}$ " long shoulder bolt. Use one washer in between to act as a bearing. Install second washer on shoulder bolt and through latch bracket. Repeat process for both sides.
- Place bracket threaded plates inside the upright. Use $\frac{3}{8}$ " x 2 Hex Bolt, $\frac{3}{8}$ " Lock Washer, $\frac{3}{8}$ " Flat Washer, to secure upper bracket to the threaded plate (upper hole only). Leave finger tight for final adjustment.
- Assemble lanyard cable with $\frac{3}{8}$ " x 2 Hex, Bolt, $\frac{3}{8}$ " Lock Washer, $\frac{3}{8}$ " Flat Washer, Lanyard Cable and $\frac{3}{8}$ " flat washer (in that order) to secure upper bracket to the threaded plate (lower hole only). Before the hex bolt threads together, use $1\frac{1}{2}$ " metal spacer and $1\frac{1}{2}$ " ABS washer in between. Leave finger tight for final adjustment. Repeat process for both sides
- Install foam adhesive pads on upper bracket contact surface. Repeat process for both sides.



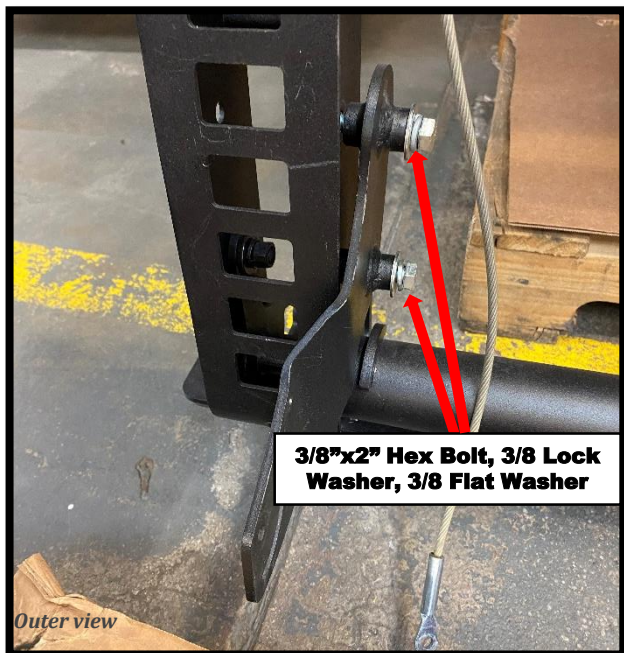
GO RHINO®

INSTALLATION INSTRUCTIONS



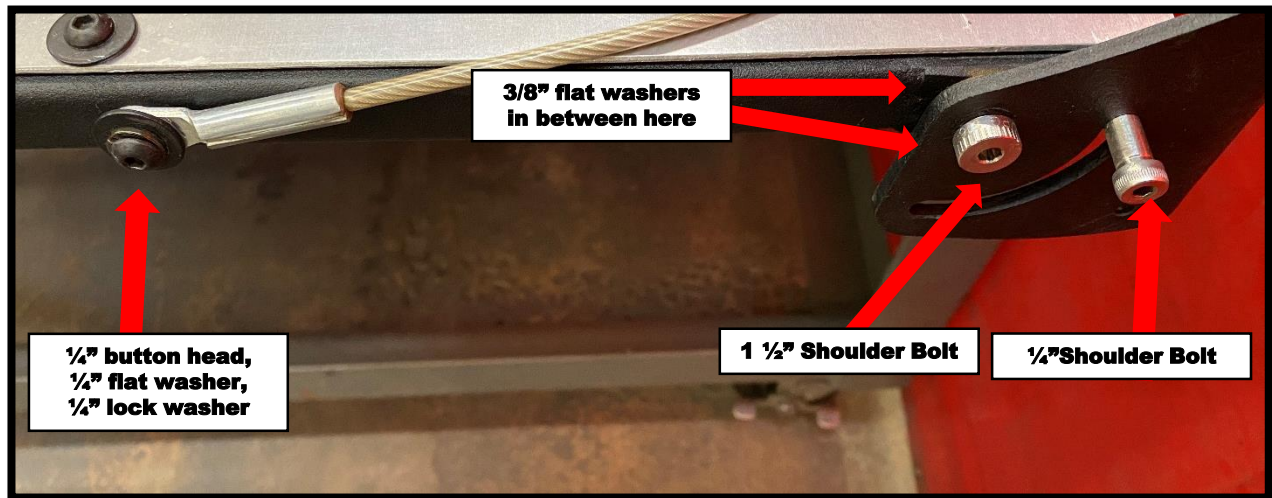
STEP # 2

- Installation of the lower table brackets. You'll need lower brackets, threaded plate, 1 ½" metal spacer, 1 ½" ABS washer, 3/8" x 2 Hex Bolt, 3/8" Lock Washer, 3/8" Flat Washer.
- Place bracket outside the upright and the threaded plates inside the upright. Use 3/8" x 2 hex bolt, 3/8 lock washer, 3/8 flat washer on the outer part of the upright and 1 ½" metal spacer and 1 ½" ABS washer for the upper hole. Install spacer in between upright and threaded plate. Leave finger tight before final adjustment.
- Use 3/8" x 2 Hex Bolt, 3/8" Lock Washer, 3/8" Flat Washer, to secure lower table bracket to the threaded plate (lower hole only). Install it on the outside of the upright. Leave finger tight for final adjustment.
- Repeat process for both sides



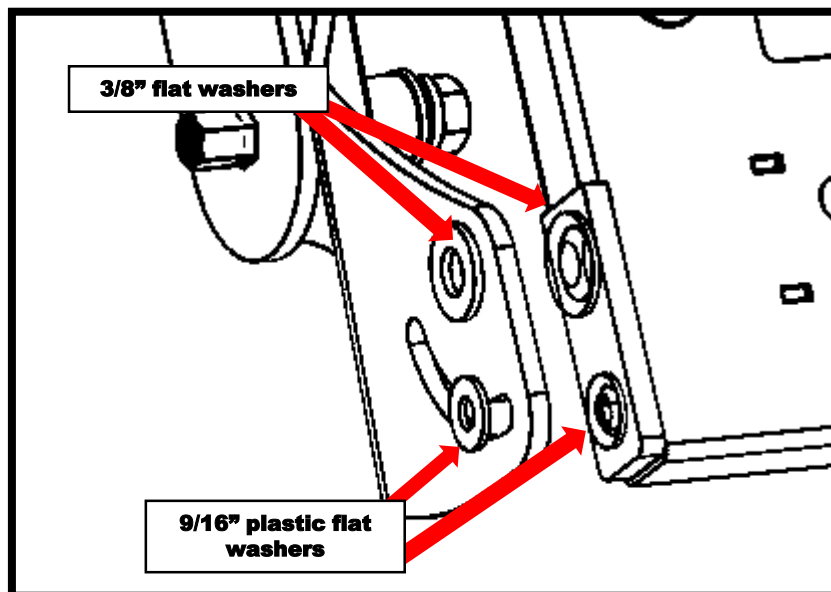
GORRHINO®

INSTALLATION INSTRUCTIONS



STEP # 3

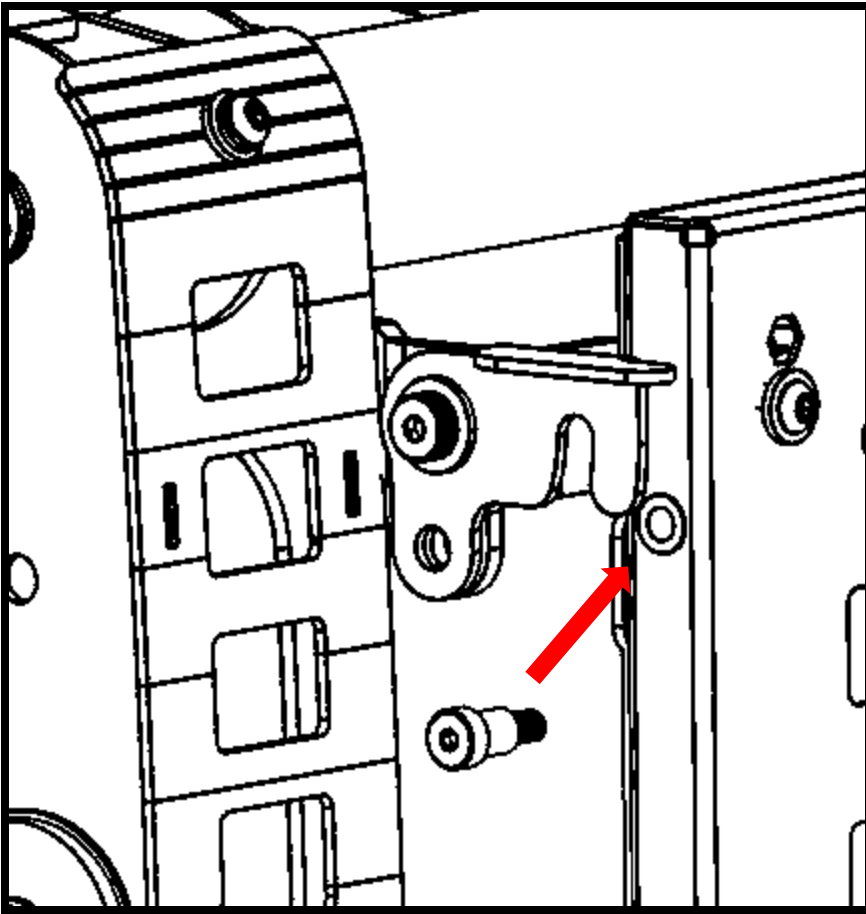
- With assistance, install table to the lower brackets using 1 1/2" Long Shoulder Bolt on the circular hole. Use 3/8 flat washer on outer and inner area where the shoulder bolt will rest. Install 1/4" long shoulder bolt on the slotted hole. Use 9/16 plastic washer on the outer and inner area where shoulder bolt rest. (refer to image below). Leave finger tight for final adjustment. Repeat process for both sides.
- Install lanyard cable end like the image above shows. Use 1/4 x 3/4 button head screw, 1/4" flat washer, 1/4" lock washer to secure. Leave finger tight for final adjustment. Repeat process for both sides.



GORRHINO[®]

INSTALLATION INSTRUCTIONS

STEP # 4



- Install ½" long shoulder bolt into ¼" thread on the table. This shoulder bolt is where the latch will secure the table to.
- Check to see that all the brackets align with the latch.
- Fasten hardware down to a snug fit but do not over tighten. Overtightening will result in the table not folding or folding with too much resistance.



GORRHINO®

INSTALLATION INSTRUCTIONS



Installed on Xtreme Rack

- Periodically check the hardware and fasten as needed.