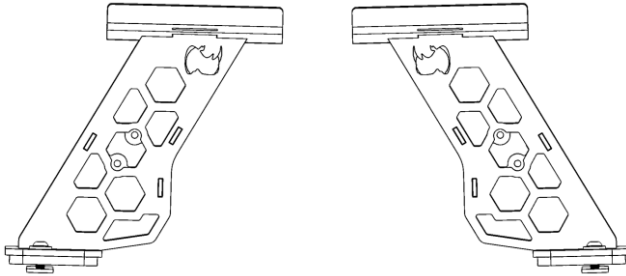


# GORRHINO®

## INSTALLATION INSTRUCTIONS

PART NO.

- 5935015T



PRODUCT DESCRIPTION:

- XRS Bed Cross Rail Kit- Tonneau Cover Bed Track

### PRODUCT SAFETY & LEGAL DISCLAIMER

- **IMPORTANT READ ALL INSTRUCTIONS CAREFULLY BEFORE INSTALLING, FAILURE TO DO SO MAY CAUSE PERSONAL INJURY OR DAMAGE TO PRODUCT AND/OR PROPERTY.**
- **Review the product package and contents prior to beginning the installation.** Take care when opening the packaging and removing items. If a return is needed you will want to return the product in its original packaging if possible.
- This instruction guide is provided as a GENERAL installation guide, some vehicles vary dimensionally and may require additional steps.
- Test fit the product on the vehicle prior to any third party modifications and or finishing. The manufacturer and/or distributors do not accept responsibility for third party charges, labor and or third part replacement modifications. Some modifications may void the factory warranty.
- Exercise due-diligence when installing this product. The manufacturer and distributors of this product do not accept any responsibility for vehicle damage or personal injury resulting from the installation of this product. Careless installation and operation can result in serious injury or equipment damage.
- This product is for general off-road use. All liability for installation and use rests with the owner/operator.
- **INSTALLER:** Once installation is complete, please return this guide along with other documentation included in this product back to the consumer for future reference. The manufacturer/distributors of this product do not guarantee this particular version will be available at a later date.



## INSTALLATION INSTRUCTIONS

### INJURY HAZARD

Please complete a shop and tool inspection prior to beginning the installation.

- Always make sure you have a clean, dry and well lit work area.
- Always remove jewelry, loose fitting clothing and wear protective gloves and eye protection.
- Always use extreme caution when jacking or raising a vehicle for work. Set the emergency brake and use tire/wheel blocks and jack stands. Refer to the vehicle manufacturer hand book. Utilize the vehicle manufacturers designated lifting points.
- Always use appropriate and adequate care in lifting parts during disassembly and installation. Seek help in lifting heavy or large items into place. Utilize jacks and or lifting devices when available.
- Always insure products are secure during disassembly and installation.
- Always wear eye protection and take steps to protect any exposed skin during the installations. Drilling, cutting and grinding plastic and metal may create flying particles that can cause injury.
- Always use extreme caution when drilling, cutting and or grinding on a vehicle. Thoroughly inspect the area to be drilled, on both sides of material, prior to modification and relocate any objects that may become damaged.
- Always assemble and tighten all fasteners per the installation instructions.
- Always route electrical cables carefully. Avoid moving parts, parts that may become hot and rough or sharp edges.
- Always insulate and protect all exposed wiring and electrical connections.

### MAINTENANCE AND CARE

- Always perform regular inspections and maintenance on mounts and related fasteners.
- Periodically check and tighten all fasteners.
- Stripped, fractured, or bent fasteners must be replaced.
- After washing the vehicle make sure to fully dry all surfaces.
- In areas with cold temperatures make sure to wash the product often to remove harmful materials used on road ways.
- Never use abrasive cleaners or polish compounds. Clean with a gentle soap and water. If you use wax use a non-abrasive automotive wax such as pure carnauba wax.

### WARNING

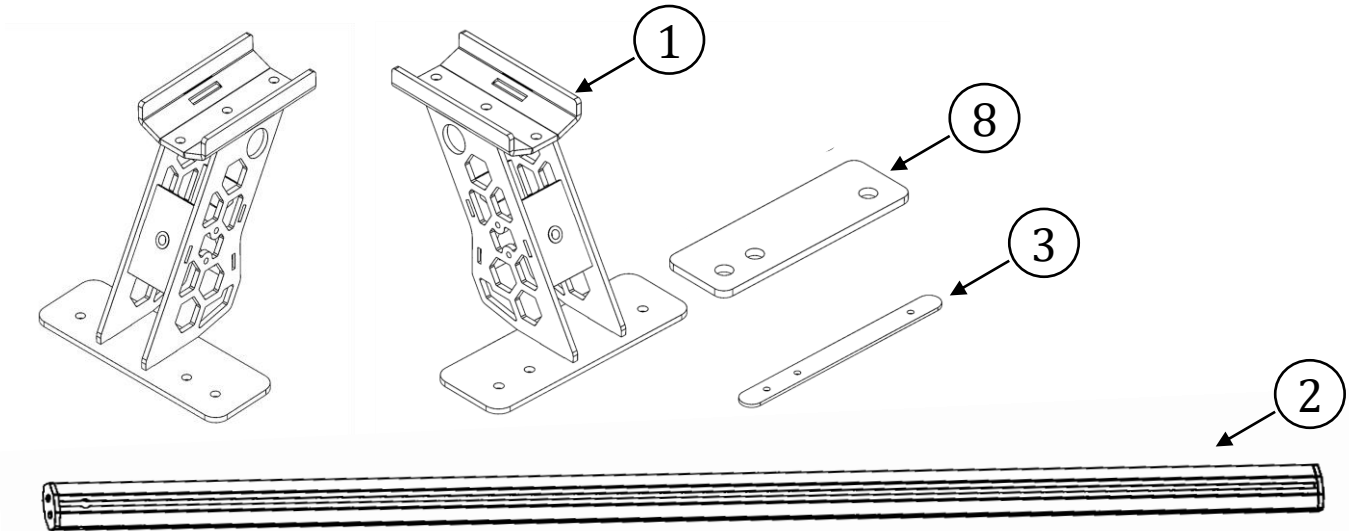
Some products have been designed to work together with factory rear sensor systems, factory forward facing sensor systems and factory air bags.

- Installation of some of these products may alter the factory sensor system performance.
- Factory sensors may read shackles or hooks protruding from the fairlead and or tow hooks.
- All sensor testing is completed by Go Rhino Products and or third party testing labs on modified vehicles.
- Sensor sensitivity, factory sensor housing, orientation, and operating conditions are all variables that will influence functionality of the sensors.
- Installation of some product may effect the factory air bag systems.
- Some products allow the use of third party products such as winches, shackles, hooks, etc. Follow the respective manufacturers operating instructions for use with our products.
- Make sure to fully understand the product, it's intended use and operation prior to use.
- Above all... be safe!

# GO RHINO®

## INSTALLATION INSTRUCTIONS

PARTS INCLUDED IN THIS LIST:



ITEM	QTY	UNIT	DESCRIPTION
1	2	SET	XRS BED TRACK TOWER
2	2	PCS	70" CROSS BAR
3	4	PCS	TREADED PLATES
4	12	PCS	HEX BOLT 1/4 x 1"
5	4	PCS	FLAT WASHER 1/4"
6	12	PCS	LOCK WASHER 1/4"
7	12	PCS	HEX NUT 1/4"
8	2	SET	GASKET
9	12	PCS	1/4" X3/4" BUTTON HEAD SEMS BOLT

Go Rhino recommends you, the installer, read this installation instruction manual from front to back before installing the product.

### TOOLS NEEDED FOR INSTALLATION:

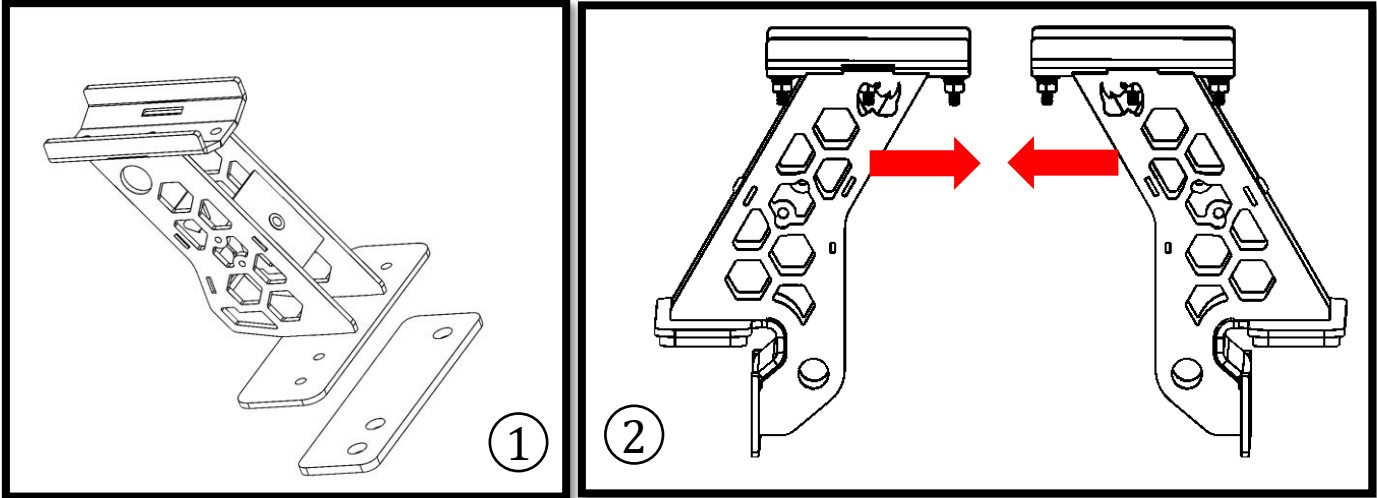
- 1/2" Socket/ Wrench
- 7/16" Socket/ Wrench

ESTIMATED TIME FOR INSTALLATION:

1 Hour

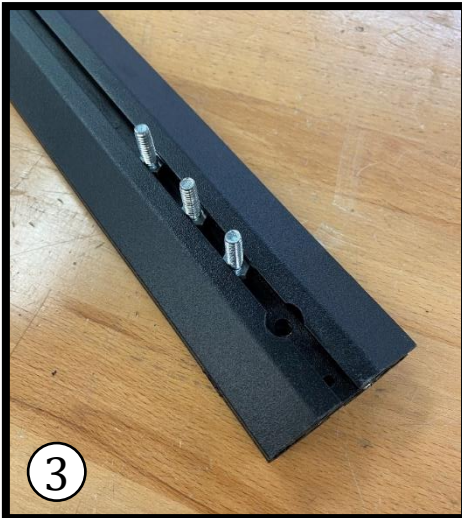
# GO RHINO®

## INSTALLATION INSTRUCTIONS



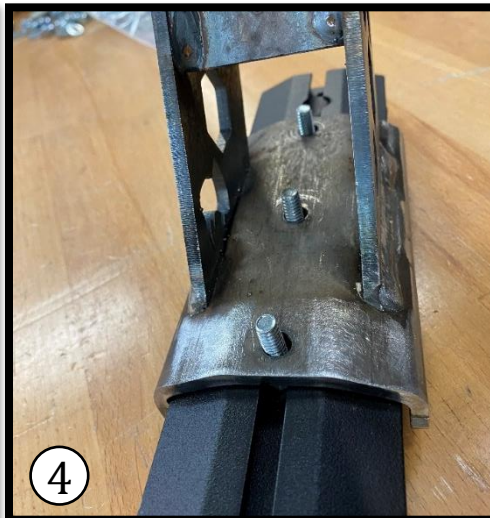
Install foam adhesive on the mounting surface of the SRM tower (image 1). Position each tower mounted be sure the Rhino heads are facing each other (image 2).

### STEP #



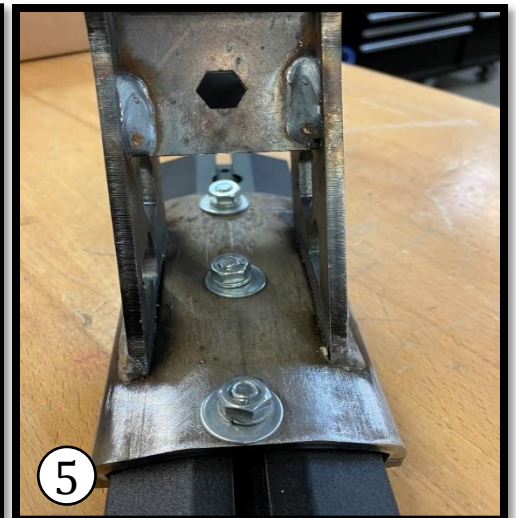
3

Insert 3 qty  $\frac{1}{4}$ " x 1" hex bolts into the slot on the cross bar. Repeat process for each end of the cross bar (image 3).



4

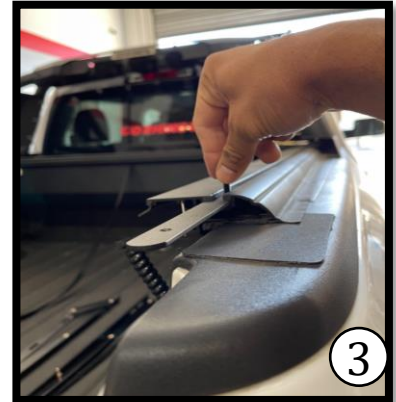
Install tower into crossbar with the  $\frac{1}{4}$ " exposed as studs (image 4). Secure each tower with 3 QTY with  $\frac{1}{4}$ " flat washer,  $\frac{1}{4}$ " lock washer,  $\frac{1}{4}$ " hex nut (image 5). Leave loose for final adjustment. Repeat steps for all four corners.



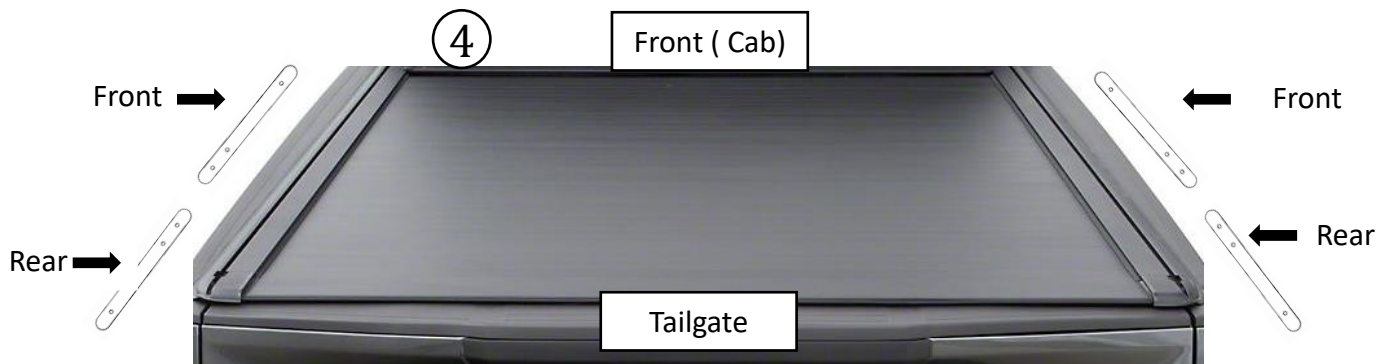
5

# GO RHINO®

## INSTALLATION INSTRUCTIONS



Remove the end cap on your tonneau cover to expose the track (refer to your manufacturer guide on removal) (1). Insert threaded track plate into the tonneau cover track (two per side)(2). To run the plate inside the track into your desired position, you may use the SEMS bolt to run it along the track (3). The track plates have a threaded holes that are positioned to dictate how the towers will orientate once installed. Install first pair of plates with the single hole pointing towards the cab and the second pair pointed towards the tail gate (4).



# GORRHINO<sup>®</sup>

## INSTALLATION INSTRUCTIONS



Measure the inside bed rail distance. Use that distance to determine the spacing for the XRS towers.

Once you determine the distance and have adjusted the towers, you can place the XRS on the bed rails. Note that the Rhino heads point towards the outside of the bed and not in the center.

Repeat process for each pair of towers and cross bars.



# GO RHINO®

## INSTALLATION INSTRUCTIONS

Final adjustment.



Once you position each tower and cross bar to your desired location, fasten all loose hardware. If bowing is present on the crossbars, loosen all hardware from the towers to the rail and make sure the cross bar is flat on the tower. Over tightening the tower onto the bed rail can result in cross bar bowing. Periodically inspect hardware and fasten as needed.