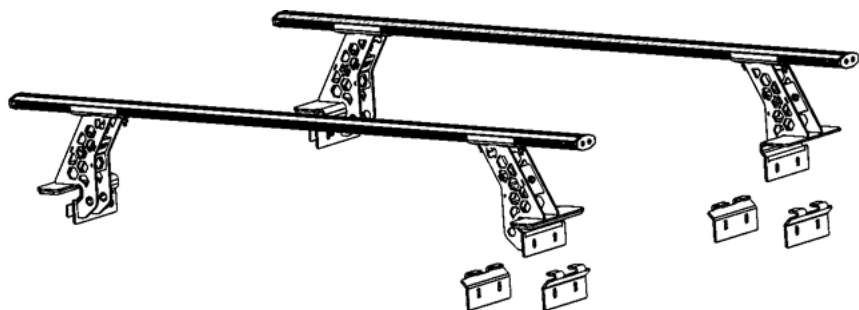


# GO RHINO®

## INSTALLATION INSTRUCTIONS



### PART NO.

- 5935000T
- 5935001T

### PRODUCT DESCRIPTION:

- XRS Bed Cross Rail Kit

### PRODUCT SAFETY & LEGAL DISCLAIMER

- **IMPORTANT READ ALL INSTRUCTIONS CAREFULLY BEFORE INSTALLING, FAILURE TO DO SO MAY CAUSE PERSONAL INJURY OR DAMAGE TO PRODUCT AND/OR PROPERTY.**
- **Review the product package and contents prior to beginning the installation.** Take care when opening the packaging and removing items. If a return is needed you will want to return the product in its original packaging if possible.
- This instruction guide is provided as a GENERAL installation guide, some vehicles vary dimensionally and may require additional steps.
- Test fit the product on the vehicle prior to any third party modifications and or finishing. The manufacturer and/or distributors do not accept responsibility for third party charges, labor and or third part replacement modifications. Some modifications may void the factory warranty.
- Exercise due-diligence when installing this product. The manufacturer and distributors of this product do not accept any responsibility for vehicle damage or personal injury resulting from the installation of this product. Careless installation and operation can result in serious injury or equipment damage.
- This product is for general off-road use. All liability for installation and use rests with the owner/operator.
- **INSTALLER:** Once installation is complete, please return this guide along with other documentation included in this product back to the consumer for future reference. The manufacturer/distributors of this product do not guarantee this particular version will be available at a later date.



## INSTALLATION INSTRUCTIONS

### INJURY HAZARD

Please complete a shop and tool inspection prior to beginning the installation.

- Always make sure you have a clean, dry and well lit work area.
- Always remove jewelry, loose fitting clothing and wear protective gloves and eye protection.
- Always use extreme caution when jacking or raising a vehicle for work. Set the emergency brake and use tire/wheel blocks and jack stands. Refer to the vehicle manufacturer hand book. Utilize the vehicle manufacturers designated lifting points.
- Always use appropriate and adequate care in lifting parts during disassembly and installation. Seek help in lifting heavy or large items into place. Utilize jacks and or lifting devices when available.
- Always insure products are secure during disassembly and installation.
- Always wear eye protection and take steps to protect any exposed skin during the installations. Drilling, cutting and grinding plastic and metal may create flying particles that can cause injury.
- Always use extreme caution when drilling, cutting and or grinding on a vehicle. Thoroughly inspect the area to be drilled, on both sides of material, prior to modification and relocate any objects that may become damaged.
- Always assemble and tighten all fasteners per the installation instructions.
- Always route electrical cables carefully. Avoid moving parts, parts that may become hot and rough or sharp edges.
- Always insulate and protect all exposed wiring and electrical connections.

### MAINTENANCE AND CARE

- Always perform regular inspections and maintenance on mounts and related fasteners.
- Periodically check and tighten all fasteners.
- Stripped, fractured, or bent fasteners must be replaced.
- After washing the vehicle make sure to fully dry all surfaces.
- In areas with cold temperatures make sure to wash the product often to remove harmful materials used on road ways.
- Never use abrasive cleaners or polish compounds. Clean with a gentle soap and water. If you use wax use a non-abrasive automotive wax such as pure carnauba wax.

### WARNING

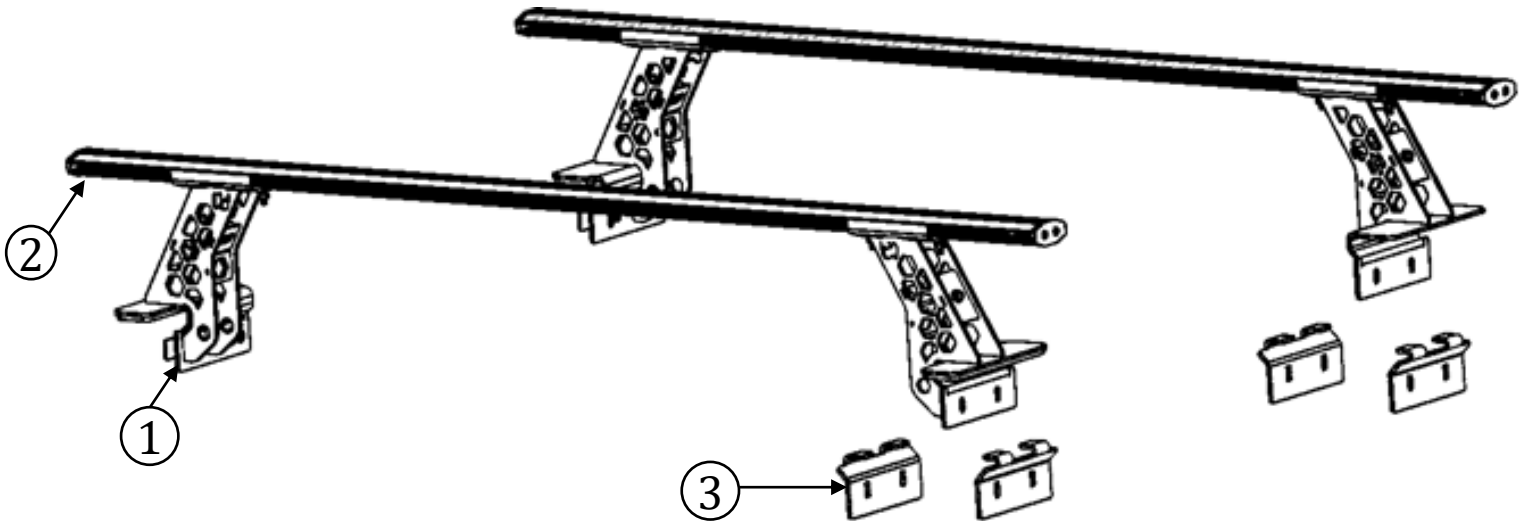
Some products have been designed to work together with factory rear sensor systems, factory forward facing sensor systems and factory air bags.

- Installation of some of these products may alter the factory sensor system performance.
- Factory sensors may read shackles or hooks protruding from the fairlead and or tow hooks.
- All sensor testing is completed by Go Rhino Products and or third party testing labs on modified vehicles.
- Sensor sensitivity, factory sensor housing, orientation, and operating conditions are all variables that will influence functionality of the sensors.
- Installation of some product may effect the factory air bag systems.
- Some products allow the use of third party products such as winches, shackles, hooks, etc. Follow the respective manufacturers operating instructions for use with our products.
- Make sure to fully understand the product, it's intended use and operation prior to use.
- Above all... be safe!

# GO RHINO®

## INSTALLATION INSTRUCTIONS

PARTS INCLUDED IN THIS LIST:



PART	QTY	DESCRIPTION	HARDWARE	QTY	DESCRIPTION
1	2	XRS TOWERS (PAIR)	1	12	1/4" X 1" HEX BOLT
2	2	CROSSBARS	2	16	1/4" FLAT WASHER
3	4	BED RAIL CLAMP	3	16	1/4" LOCK WASHER
4	4	BED TRACK PLATE (not shown)	4	12	1/4" HEX NUT
5	4	CLAMP SPACER (not shown)	5	4	1/4" 3/4" BUTTON HEAD SCREW
			6	8	5/16"x 1 1/2" CARRIAGE BOLT
			7	8	5/16" FLAT WASHER
			8	8	5/16" LOCK WASHER
			9	8	5/16" HEX NUT
			10	4	5MM ADHESIVE FOAM

Go Rhino recommends you, the installer, read this installation instruction manual from front to back before installing the product.

### TOOLS NEEDED FOR INSTALLATION:

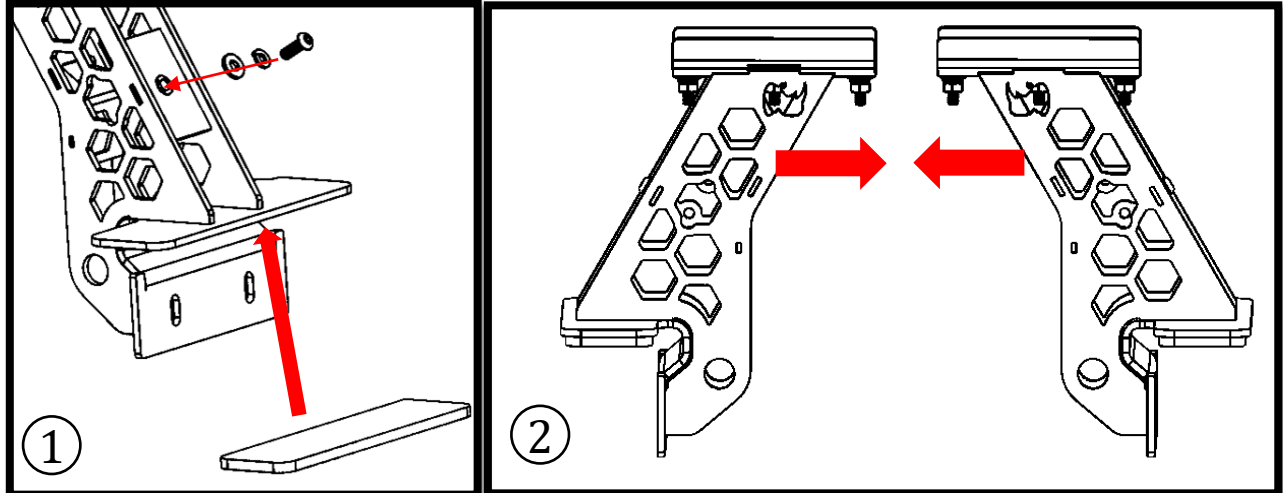
- 1/2" Socket/ Wrench
- 7/16" Socket/ Wrench

ESTIMATED TIME FOR INSTALLATION:

1 Hour

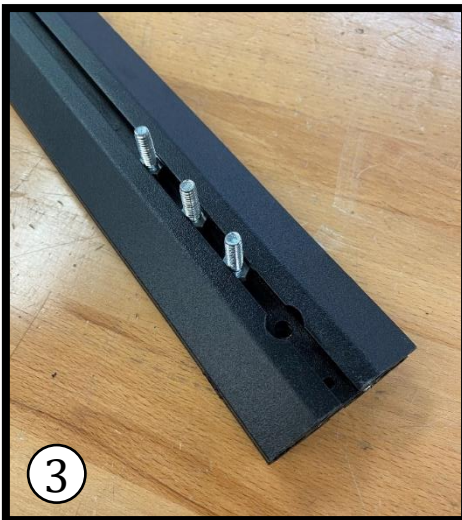
# GO RHINO®

## INSTALLATION INSTRUCTIONS



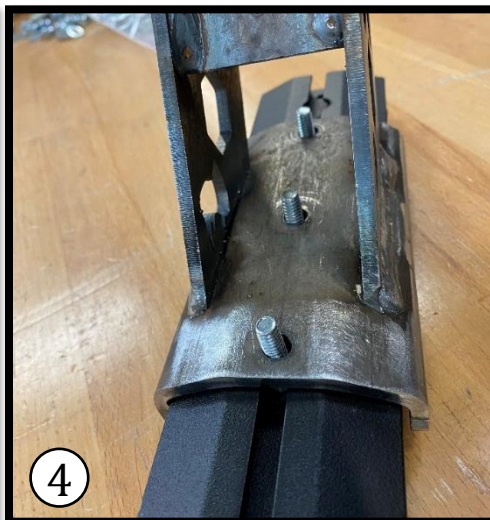
Install foam adhesive on the mounting surface of the SRM tower (image 1). Install  $\frac{1}{4}$ " button head screw,  $\frac{1}{4}$ " lock washer,  $\frac{1}{4}$ " flat washer onto the threaded riv-nut. Repeat steps for all four towers. Position each tower mounted be sure the Rhino heads are facing each other (image 2).

### STEP #



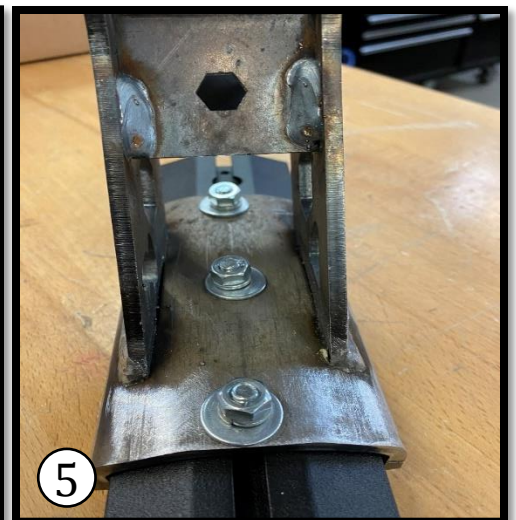
3

Insert 3 qty  $\frac{1}{4}$ " x 1" hex bolts into the slot on the cross bar. Repeat process for each end of the cross bar (image 3).



4

Install tower into crossbar with the  $\frac{1}{4}$ " exposed as studs (image 4). Secure each tower with 3 QTY with  $\frac{1}{4}$ " flat washer,  $\frac{1}{4}$ " lock washer,  $\frac{1}{4}$ " hex nut (image 5). Leave loose for final adjustment. Repeat steps for all four corners.



5

# GORRHINO®

## INSTALLATION INSTRUCTIONS



Measure the inside bed rail distance. Use that distance to determine the spacing for the SRM towers.

Once you determine the distance and have adjusted the towers, you can place the SRM50 on the bed rails. Note that the Rhino heads point towards the outside of the bed and not in the center.

Repeat process for each pair of towers and cross bars.



# GO RHINO®

## INSTALLATION INSTRUCTIONS

Installation on vehicles equipped with Bed Track Systems

**\*\*\*\*\*Depending on your desired placement, you will need to remove any installed adjustable tie down cleats. Refer to your owners manual on removal process\*\*\*\*\***

HARDWARE NEEDED	
QTY	ITEM
4	Bed Track Mounting Plates
8	5/16 x 1 ½" Carriage Bolts

With tie down cleats removed, install Bed Track Mounting Plate with 5/16" Carriage Bolt bolt plates onto bed track system. Each side will use 2 bolt plates and 4 carriage bolts (image 1)



**\*\*\*if you are planning on reusing your tie down cleats, you will need to install them after the first threaded bolt plate is installed. You will not be able to reinstall them once the towers are on\*\*\*\*\***



# GO RHINO®

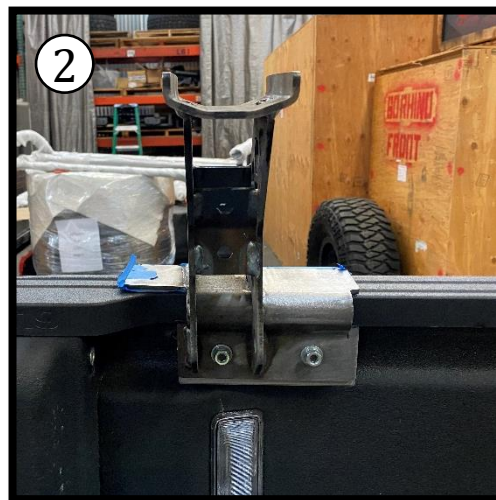
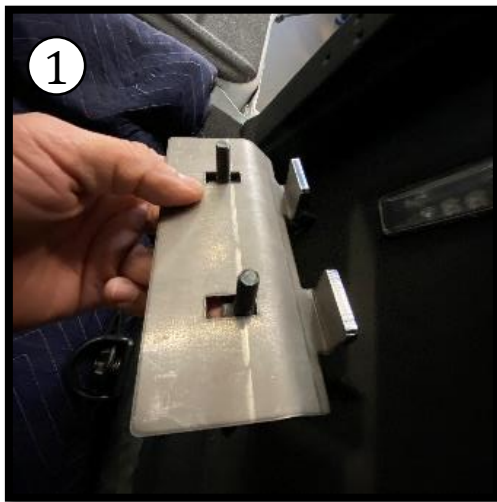
## INSTALLATION INSTRUCTIONS

### Installation on vehicles equipped with Bed Track Systems

Secure tower to bolt plate with two 5/16" flat washers, 5/16" lock washers, 5/16" hex nut. Leave finger tight for final adjustment. Repeat steps for all four towers (image 1).



### Fitment for Gladiator without Mopar Rails

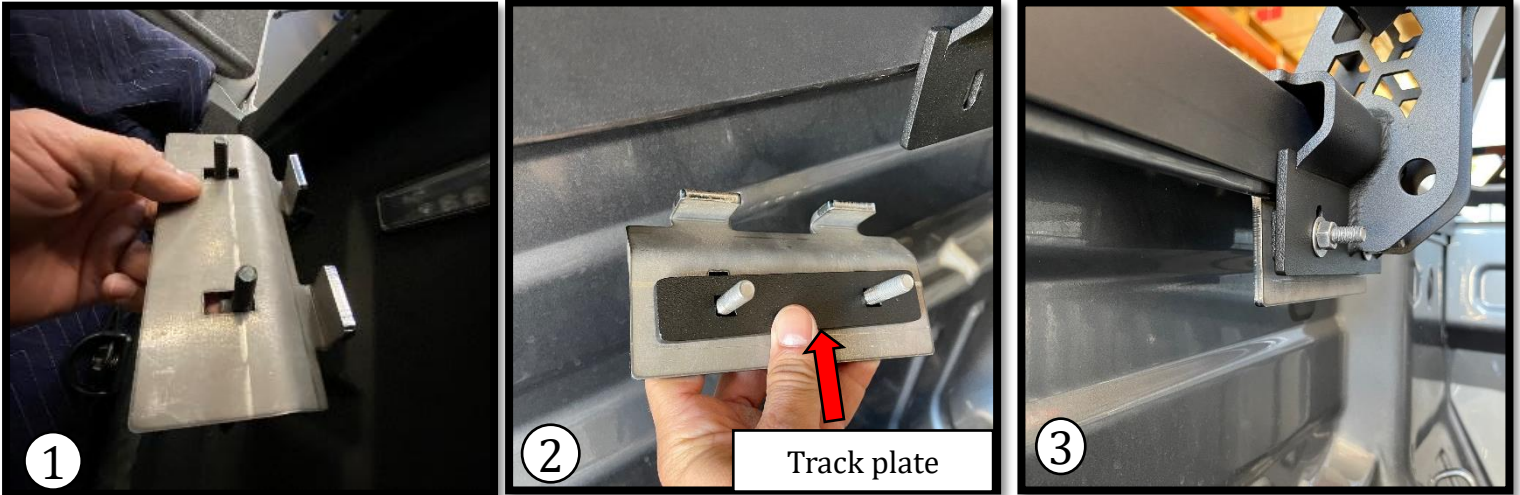


Use the provided bed rail clamp and install 5/16" carriage bolt from the backside (image 1). Once the threads are exposed, position the clamp against the inside of the bed rail and use 5/16" flat washer, 5/16" lock washer, and 5/16" hex nut to secure the clamp (image 2). Leave finger tight for final adjustment. Repeat process for each corner.

# GO RHINO®

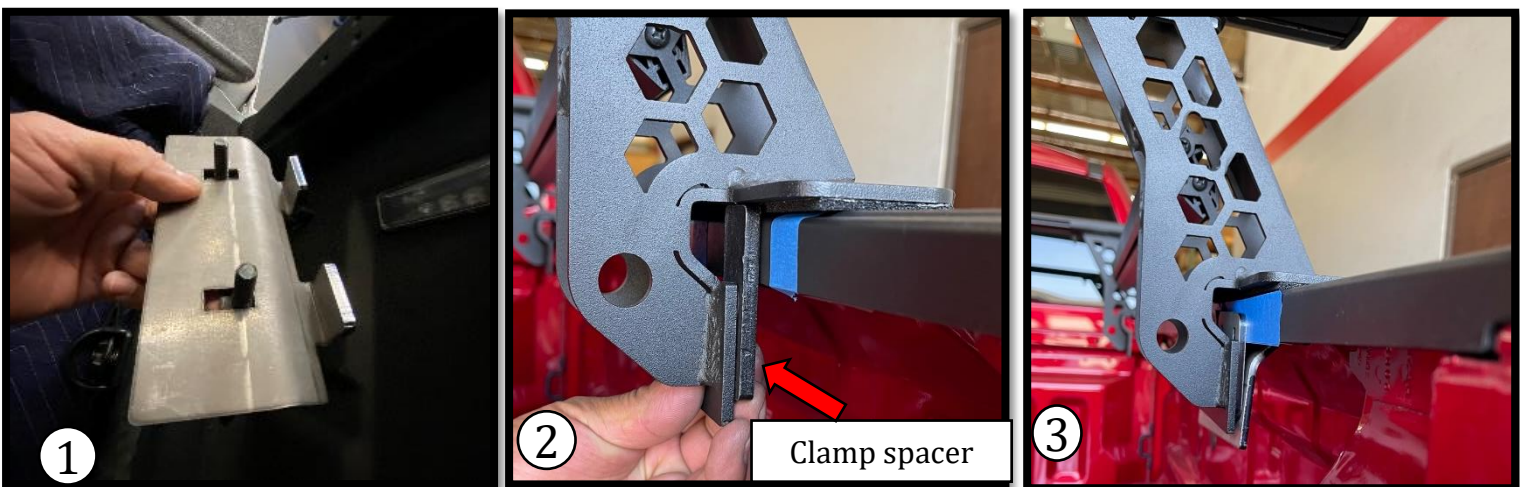
## INSTALLATION INSTRUCTIONS

### Fitment for Colorado/ Canyon



Use the provided bed rail clamp and install 5/16" carriage bolt from the backside (image 1). Place track system plate onto the bed rail clamp so that it acts as a spacer to square the clamp against the inside of the bed rail (image 2). Once the threads are exposed, position the clamp against the inside of the bed rail and use 5/16" flat washer, 5/16 lock washer, and 5/16 hex nut to secure the clamp. Leave finger tight for final adjustment. Repeat process for each corner.

### Fitment for Ford Ranger



Use the provided bed rail clamp and install 5/16" carriage bolt from the backside (image 1). Place clamp spacer plate onto the bed rail clamp so that it acts as a spacer to square the clamp against the inside of the bed rail (image 2). Once the threads are exposed, position the clamp against the inside of the bed rail and use 5/16" flat washer, 5/16 lock washer, and 5/16 hex nut to secure the clamp. Leave finger tight for final adjustment. Repeat process for each corner.



# GO RHINO®

## INSTALLATION INSTRUCTIONS

Final adjustment.



Once you position each tower and cross bar to your desired location, fasten all loose hardware. If bowing is present on the crossbars, loosen all hardware from the towers to the rail and make sure the cross bar is flat on the tower. Over tightening the tower onto the bed rail can result in cross bar bowing. Periodically inspect hardware and fasten as needed.