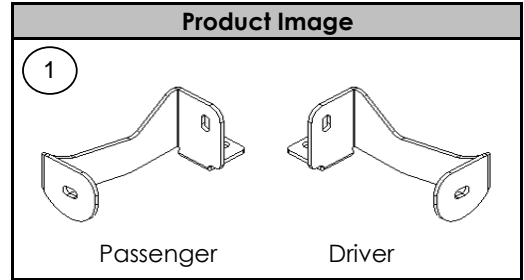


Parts List				
Item	Qty.	Code	Description	Max. Torque
1	1 Set	522884AA	Main bracket	-
<b>1</b>		<b>KTE-522885</b>	<b>HARDWARE KIT INCLUDES:</b>	<b>-</b>
2	2 Piece	-	1/2 x 4 1/2" Hex head bolt.	75 Lb.Ft
3	4 Piece	-	1/2 x 1 1/2" Hex head bolt.	75 Lb.Ft
4	10 Piece	-	1/2" Flat washer.	-
5	6 Piece	-	1/2" Lock washer.	-
6	4 Piece	-	1/2" Hex nut.	75 Lb.Ft

Required Tools (Not included)	
Qty.	Description
1	3/4" Socket & Wrench
1	10 mm 17mm Socket & Wrench
1	Ratchet
1	Ratchet extension



**Instructions**

1. Before beginning the installation, please read all directions carefully and verify that all necessary hardware is accounted for. If any parts are missing, stop the installation and contact your distributor immediately.
2. To maintain and care this product, keep it clean and do not use abrasive cleaners or polish waxes. We recommend to use only automotive wax such as pure carnauba to avoid scratches and rust.
3. The approximate installation time is **45 min.**
4. To install the brackets, identify and remove the deflector located in the lower part of vehicle as shown in **Photo 1**.

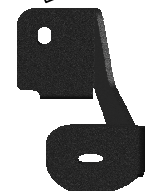
**PHOTO 1**



**PHOTO 2**



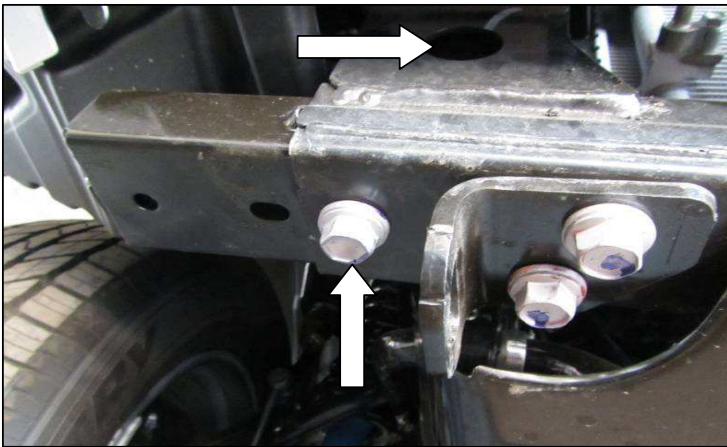
Bracket passenger side.



Bracket driver side.

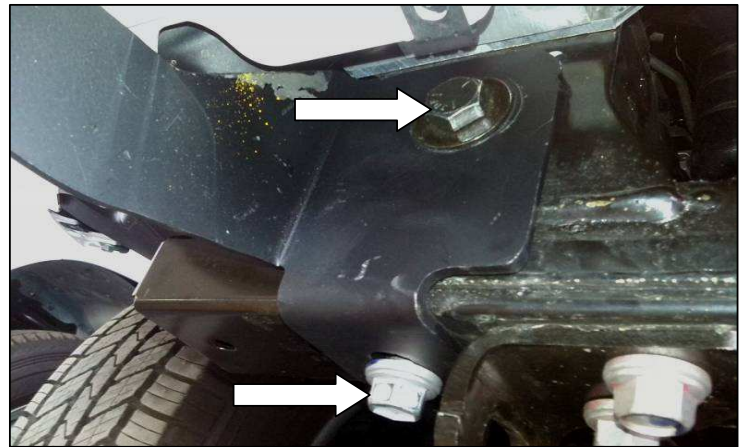
5. Identify brackets passenger side and driver side before beginning installation, as shown in **photo 2**.
6. Locate and remove the bolts located under frame, as shown in **photo 3**.

PHOTO 3



Remove the bolt shown in the photo, refers to the passenger's side and the hole shown in the upper part is where will insert the 1/2 x 4 1/2" hex head bolt.

PHOTO 4



The installed bracket shown, passenger side, in the lower part attach with bolt previously removed and in the upper part with 1/2 x 4 1/2" hex head bolt, 1/2" flat washer.

7. Place the bracket passenger side of the frame as shown in **picture 4** and secure the screw before moved in the lower part, in the upper of the bracket insert 1/2 x 4 1/2" hex head bolt and 1/2" flat washer, secure in the rear with 1/2" flat and lock washer, 1/2" hex nut. Leave loose. Repeat for the driver's side.
8. Place the Dakar / RC2 to the brackets and attach with 1/2 x 1 1/2" hex head bolt, 1/2" flat and lock washer, by each bracket. Leave loose. **See photo 5.**
9. Make any adjustments to the alignment and tighten all bolts.
10. **Locate the deflector removed and before cutting according to the dotted line in photo 6. This cut is to not obstruct with the position of the brackets, if necessary adjust the cutting deflector. See photo 6.**

PHOTO 5

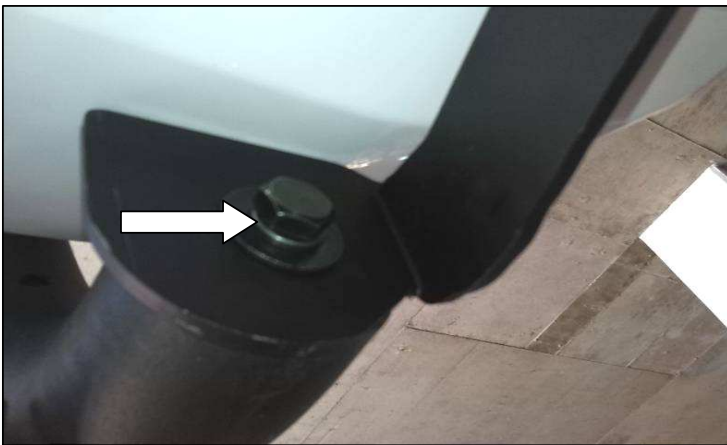
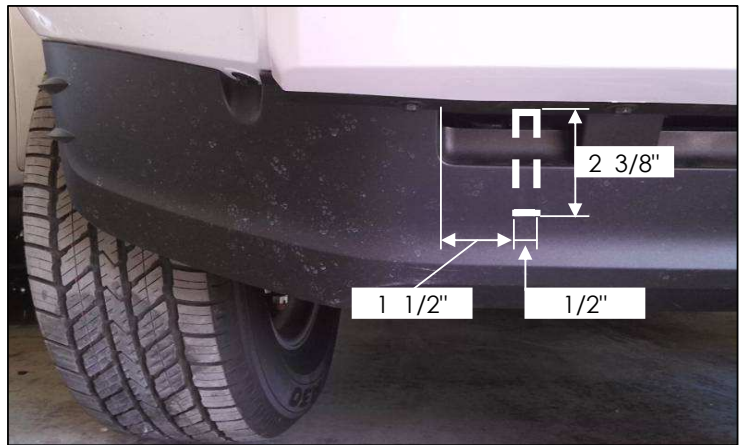


PHOTO 6



11. Remember to check and repair the hardware periodically.

PHOTO 7 INSTALLED PRODUCT.



Looking for dependable grille guards? Rely on Go Rhino for quality and long-lasting products.