

# GO RHINO®

## INSTALLATION INSTRUCTIONS

### PART NO.

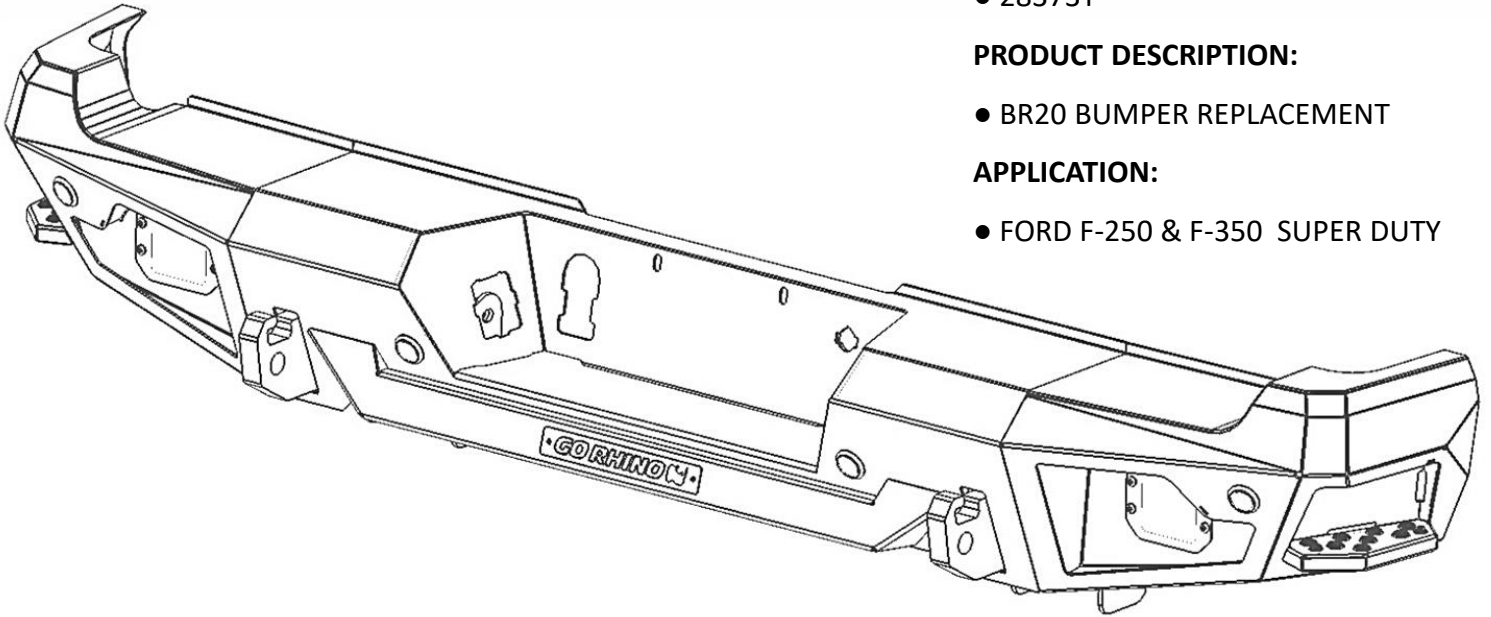
- 28373T

### PRODUCT DESCRIPTION:

- BR20 BUMPER REPLACEMENT

### APPLICATION:

- FORD F-250 & F-350 SUPER DUTY



### PRODUCT SAFETY & LEGAL DISCLAIMER

- **IMPORTANT READ ALL INSTRUCTIONS CAREFULLY BEFORE INSTALLING, FAILURE TO DO SO MAY CAUSE PERSONAL INJURY OR DAMAGE TO PRODUCT AND/OR PROPERTY.**
- **Review the product package and contents prior to beginning the installation.** Take care when opening the packaging and removing items. If a return is needed you will want to return the product in its original packaging if possible.
- This instruction guide is provided as a GENERAL installation guide, some vehicles vary dimensionally and may require additional steps.
- Test fit the product on the vehicle prior to any third party modifications and or finishing. The manufacturer and/or distributors do not accept responsibility for third party charges, labor and or third part replacement modifications. Some modifications may void the factory warranty.
- Exercise due-diligence when installing this product. The manufacturer and distributors of this product do not accept any responsibility for vehicle damage or personal injury resulting from the installation of this product. Careless installation and operation can result in serious injury or equipment damage.
- This product is for general off-road use. All liability for installation and use rests with the owner/operator.
- **INSTALLER:** Once installation is complete, please return this guide along with other documentation included in this product back to the consumer for future reference. The manufacturer/distributors of this product do not guarantee this particular version will be available at a later date.



## INSTALLATION INSTRUCTIONS

### INJURY HAZARD

Please complete a shop and tool inspection prior to beginning the installation.

- Always make sure you have a clean, dry and well lit work area.
- Always remove jewelry, loose fitting clothing and wear protective gloves and eye protection.
- Always use extreme caution when jacking or raising a vehicle for work. Set the emergency brake and use tire/wheel blocks and jack stands. Refer to the vehicle manufacturer hand book. Utilize the vehicle manufacturers designated lifting points.
- Always use appropriate and adequate care in lifting parts during disassembly and installation. Seek help in lifting heavy or large items into place. Utilize jacks and or lifting devices when available.
- Always insure products are secure during disassembly and installation.
- Always wear eye protection and take steps to protect any exposed skin during the installations. Drilling, cutting and grinding plastic and metal may create flying particles that can cause injury.
- Always use extreme caution when drilling, cutting and or grinding on a vehicle. Thoroughly inspect the area to be drilled, on both sides of material, prior to modification and relocate any objects that may become damaged.
- Always assemble and tighten all fasteners per the installation instructions.
- Always route electrical cables carefully. Avoid moving parts, parts that may become hot and rough or sharp edges.
- Always insulate and protect all exposed wiring and electrical connections.

### MAINTENANCE AND CARE

- Always perform regular inspections and maintenance on mounts and related fasteners.
- Periodically check and tighten all fasteners.
- Stripped, fractured, or bent fasteners must be replaced.
- After washing the vehicle make sure to fully dry all surfaces.
- In areas with cold temperatures make sure to wash the product often to remove harmful materials used on road ways.
- Never use abrasive cleaners or polish compounds. Clean with a gentle soap and water. If you use wax use a non-abrasive automotive wax such as pure carnauba wax.

### WARNING

Some products have been designed to work together with factory rear sensor systems, factory forward facing sensor systems and factory air bags.

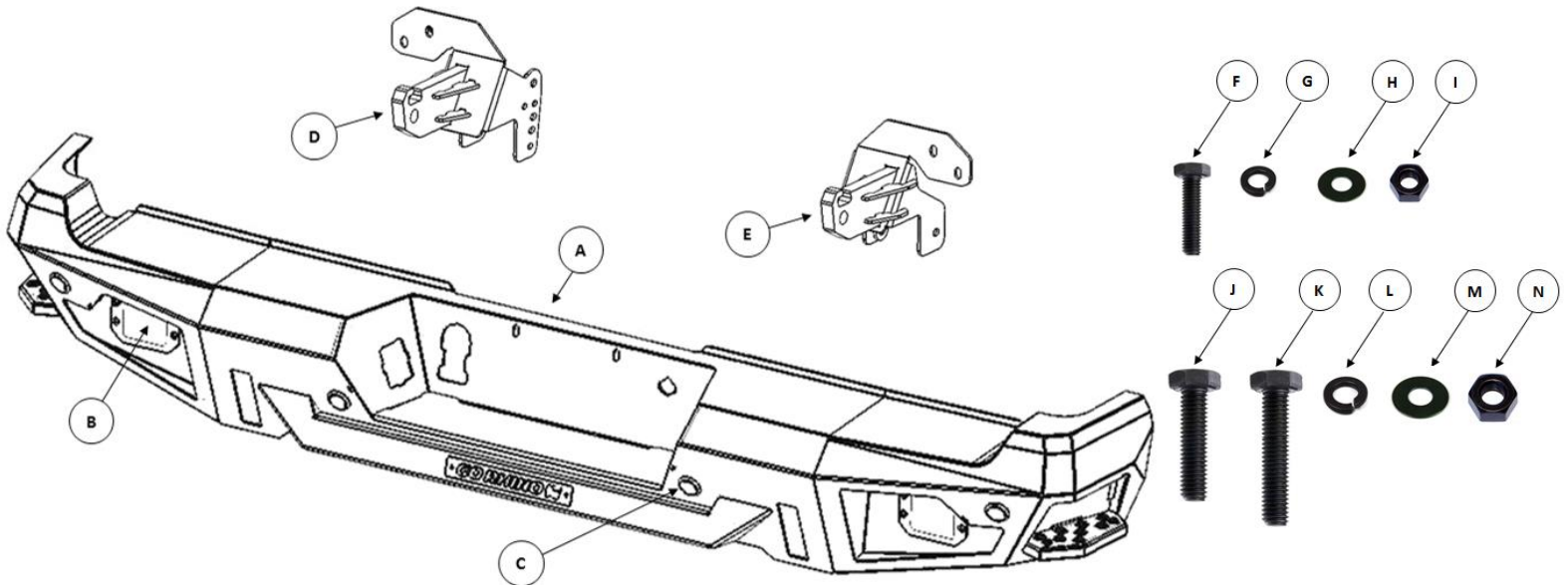
- Installation of some of these products may alter the factory sensor system performance.
- Factory sensors may read shackles or hooks protruding from the fairlead and or tow hooks.
- All sensor testing is completed by Go Rhino Products and or third party testing labs on modified vehicles.
- Sensor sensitivity, factory sensor housing, orientation, and operating conditions are all variables that will influence functionality of the sensors.
- Installation of some product may effect the factory air bag systems.
- Some products allow the use of third party products such as winches, shackles, hooks, etc. Follow the respective manufacturers operating instructions for use with our products.
- Make sure to fully understand the product, it's intended use and operation prior to use.
- Above all... be safe!

# GO RHINO®

## INSTALLATION INSTRUCTIONS

### PARTS INCLUDED IN THIS LIST:

ITEM	QTY.	DESCRIPTION	ITEM	QTY.	DESCRIPTION
A	1	Bumper Shell	H	2	3/8" Lock Washer
B	2	Light Pod Plate (pre installed)	I	2	3/8" Hex Nut
C	4	Hole Plug (pre installed)	J	4	1/2" x 1 1/2" Hex Bolt
D	1	Frame Bracket (driver)	K	4	1/2" x 2" Hex Bolt
E	1	Frame Bracket (passenger)	L	16	1/2" Flat Washer
F	2	3/8" x 1 1/4" Hex Bolt	M	8	1/2" Lock Washer
G	4	3/8" Flat Washer	N	8	1/2" Hex Nut



Go Rhino recommends you, the installer, read this installation instruction manual from front to back before installing the product.

### TOOLS NEEDED FOR INSTALLATION:

- 13mm, 21mm, 9/16" & 3/4" Sockets
- 13mm, 21mm, 9/16" & 3/4" Wrenches
- Slotted Screw Driver or Panel clip removal tool,
- 5/32" Hex Key
- Ratchet, Ratchet Extensions & Swivel Joint Adapter

ESTIMATED TIME FOR INSTALLATION:

2 Hour

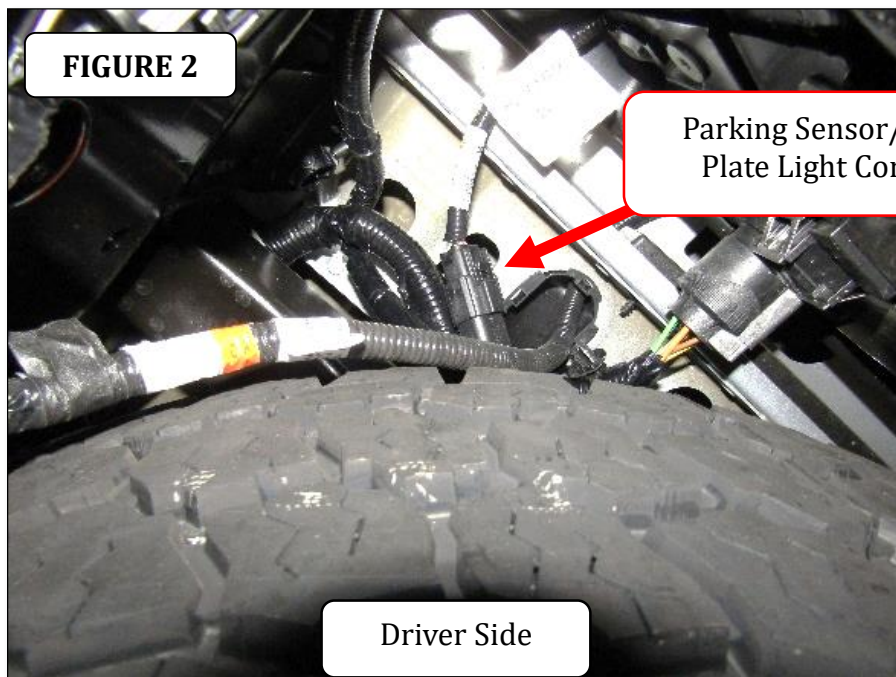
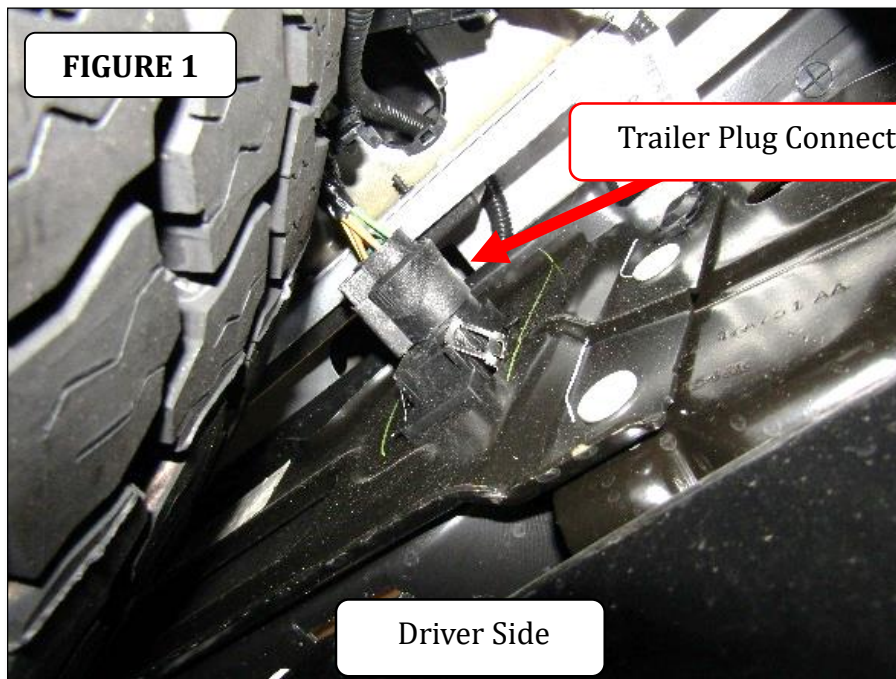
# GO RHINO®

## INSTALLATION INSTRUCTIONS

### OEM Bumper Removal

**Step-1** Open the hood and disconnect the vehicle battery or batteries.

**Step-2** Unplug the wiring connector on the back side of the OEM bumper for the trailer plug, and unplug the parking sensor/license plate light wiring connector from the vehicle wiring harness connector, (FIGURE 1 & 2).

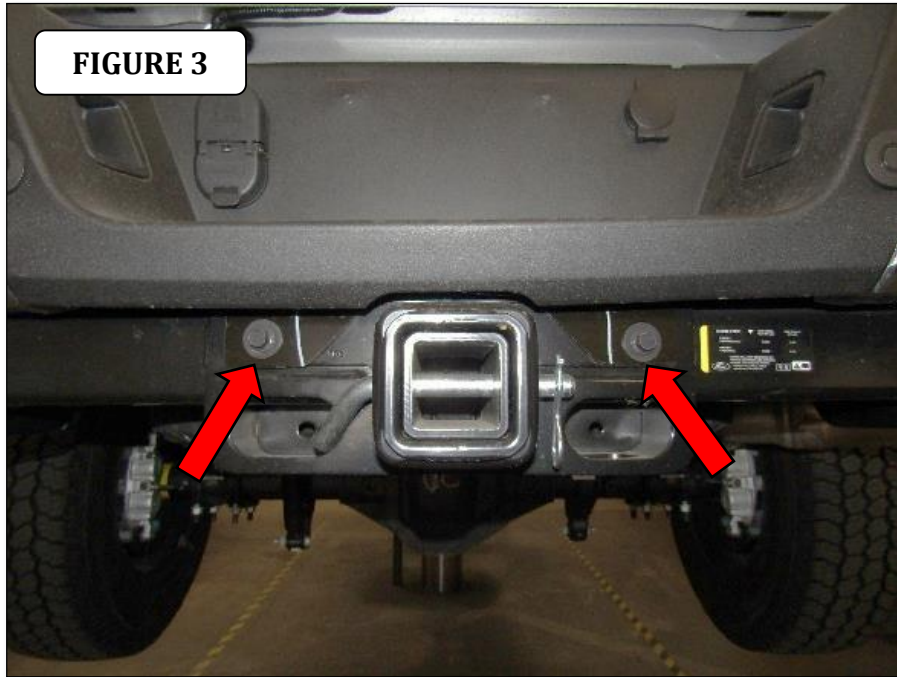




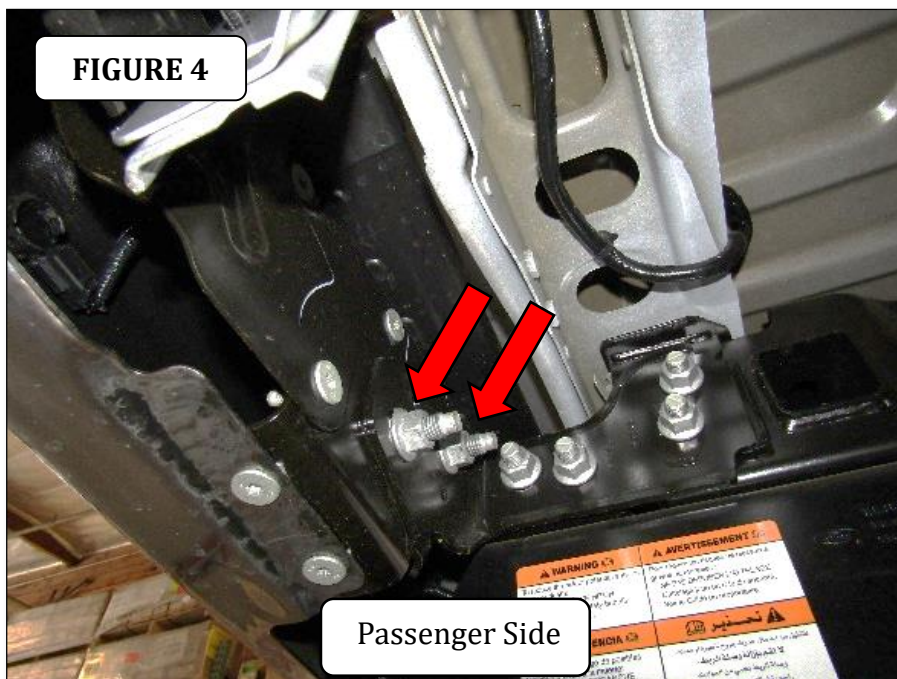
# GO RHINO®

## INSTALLATION INSTRUCTIONS

**Step-3** Using a 13mm Socket, remove the (2) bolts securing the bottom/center of the OEM bumper to the receiver hitch, (FIGURE 3).



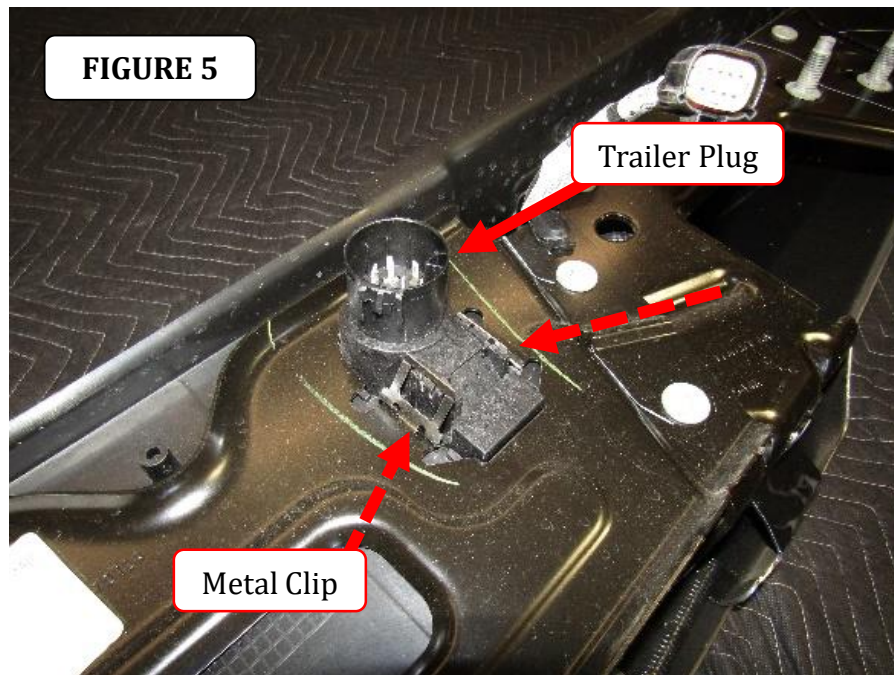
**Step-4** On each side of the vehicle, Using a 21mm socket remove the (2) nuts from the bolts securing the OEM bumper to the bumper brackets. With assistance remove the OEM bumper from the vehicle, (FIGURE 4).



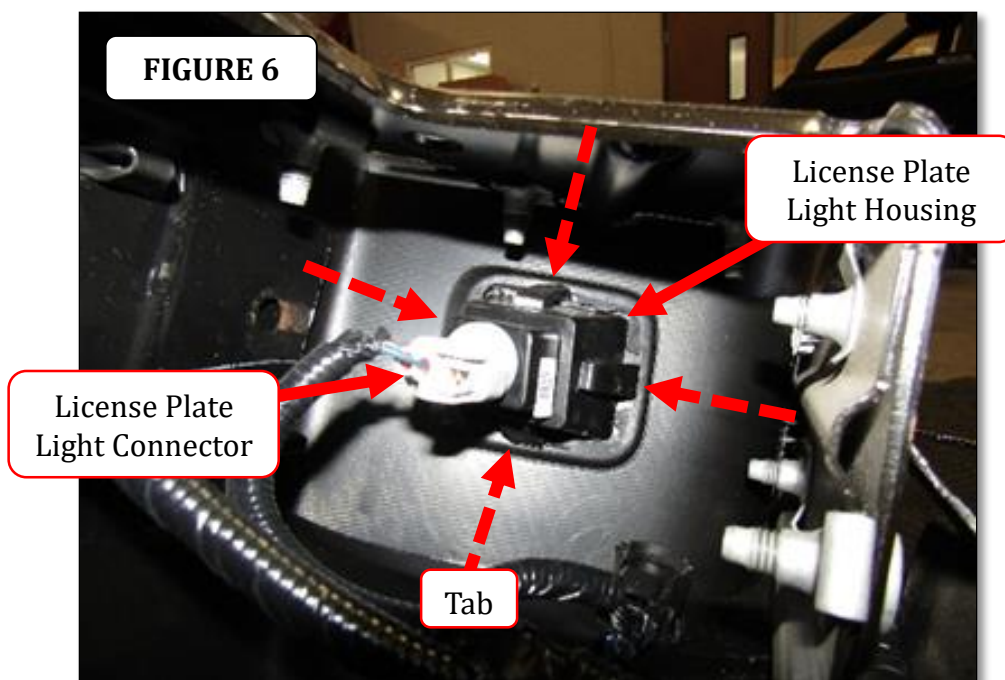
# GO RHINO®

## INSTALLATION INSTRUCTIONS

**Step-5** Remove the trailer plug from the OEM bumper by pressing in the metal clips on the back and pushing the trailer plug out the front of the bumper.



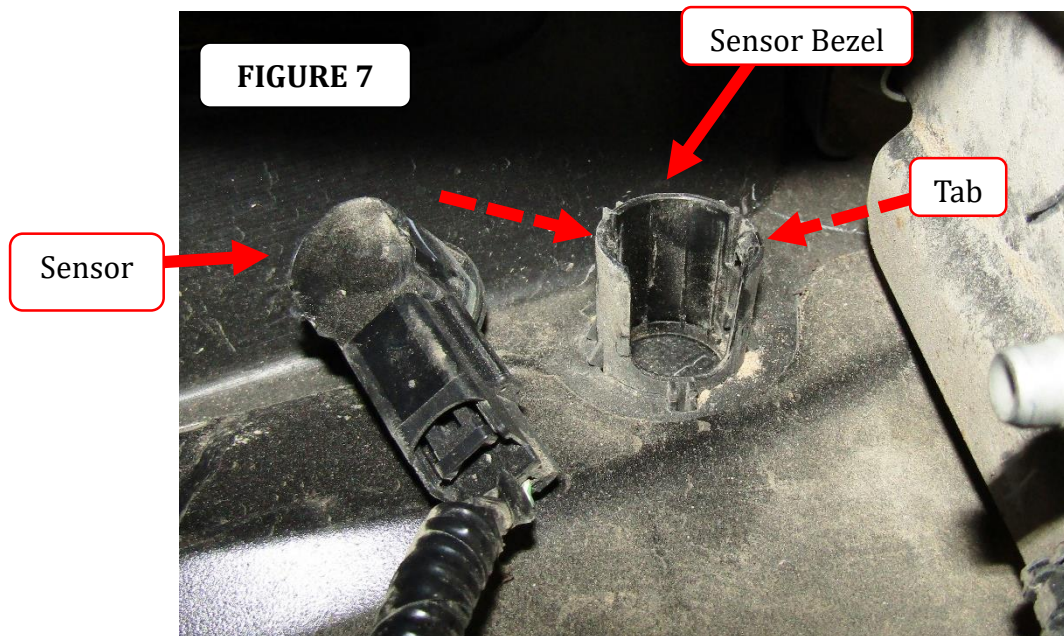
**Step-6** Remove the license plate lights from their housings, then remove the license plate light housings from the OEM bumper by pressing in the tabs on the sides of the housing, then pushing it out the front of the bumper.



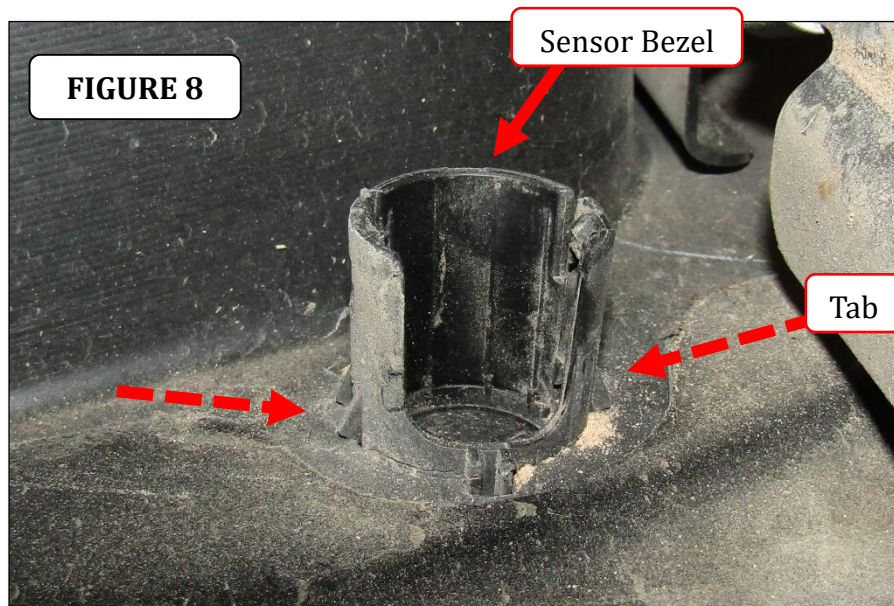


## INSTALLATION INSTRUCTIONS

**Step-7** If equipped, remove the parking sensors from each bezel in the OEM bumper, (FIGURE 5). Remove the sensor by gently spreading the two tabs at the top on the back side of the bezel, then pushing the parking sensor out the back of the bezel. Leave the sensors plugged into the OEM bumper wiring harness and remove the wiring harness with the attached sensors from the OEM bumper. Note: The sensors have to be positioned in the bumper replacement in the same location (inner and outer), (driver and passenger) as removed from the OEM bumper.



**Step-8** Remove the sensor bezels from the OEM bumper by depressing the (2) tabs around the base and pushing the bezel out through the front of the bumper, (FIGURE6). Note: The bezels have to be positioned in the bumper replacement in the same location (inner and outer), (driver and passenger) as removed from the OEM bumper.

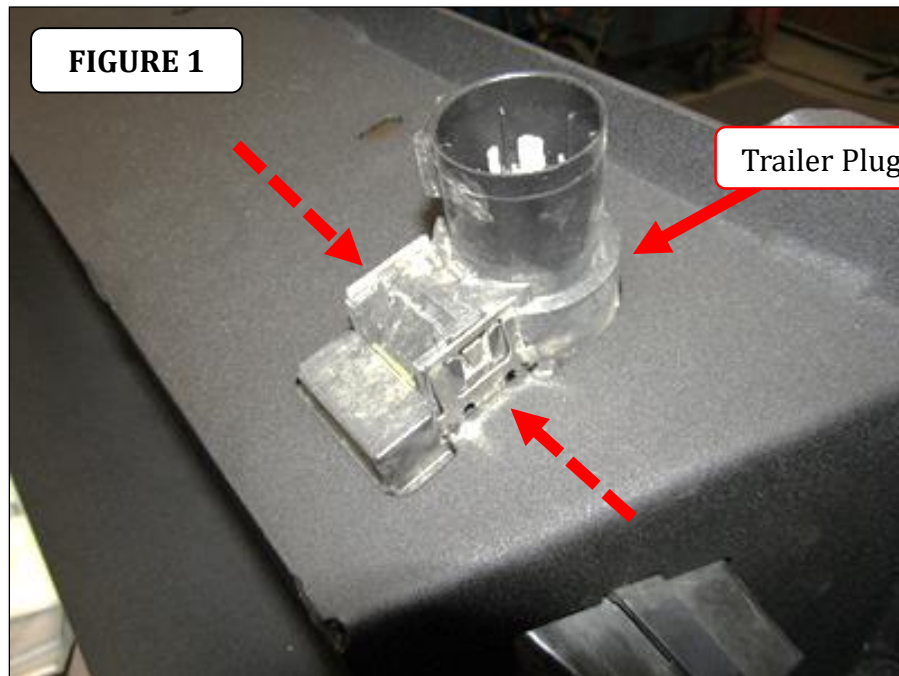


# GORRHINO<sup>®</sup>

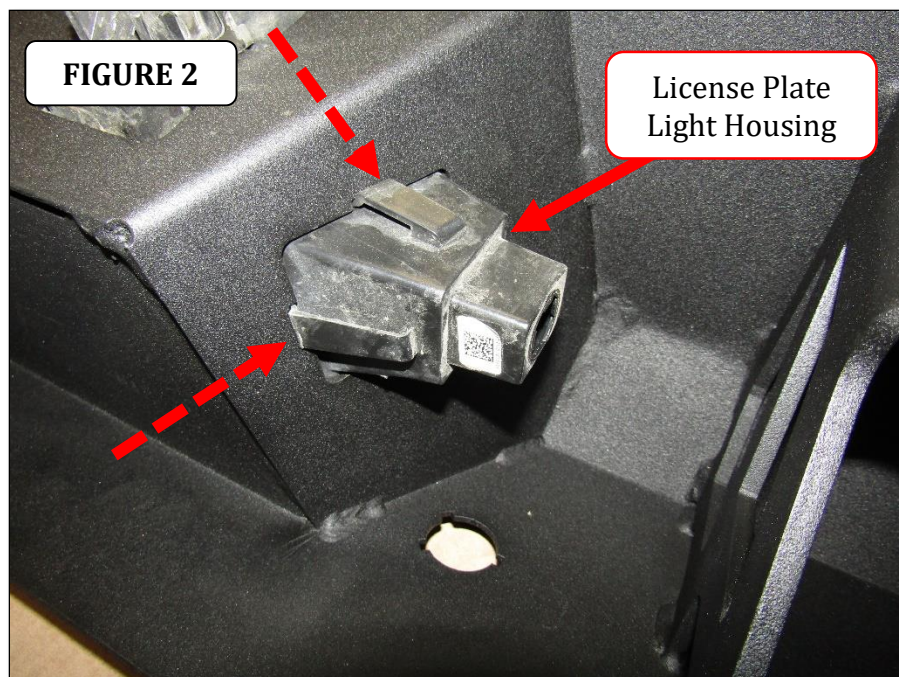
## INSTALLATION INSTRUCTIONS

### BR20 Bumper Installation

**Step-1** Install your trailer plug by pressing it into its precut hole in the bumper replacement until the metal clips move into place, (FIGURE 1).



**Step-2** Install the license plate light housings by pressing it into the precut hole in the bumper replacement until the tabs move into place, (FIGURE 2).

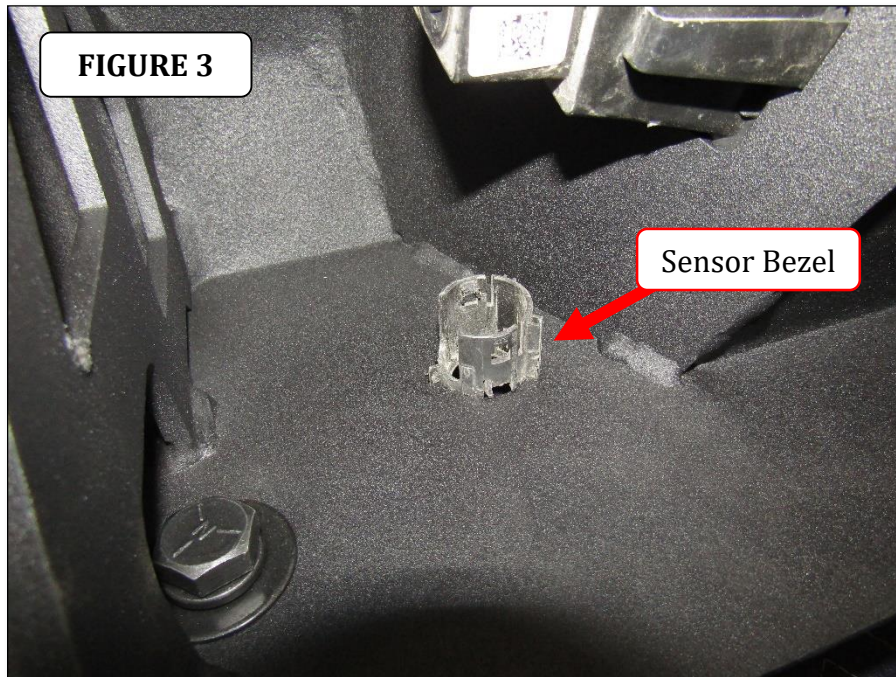




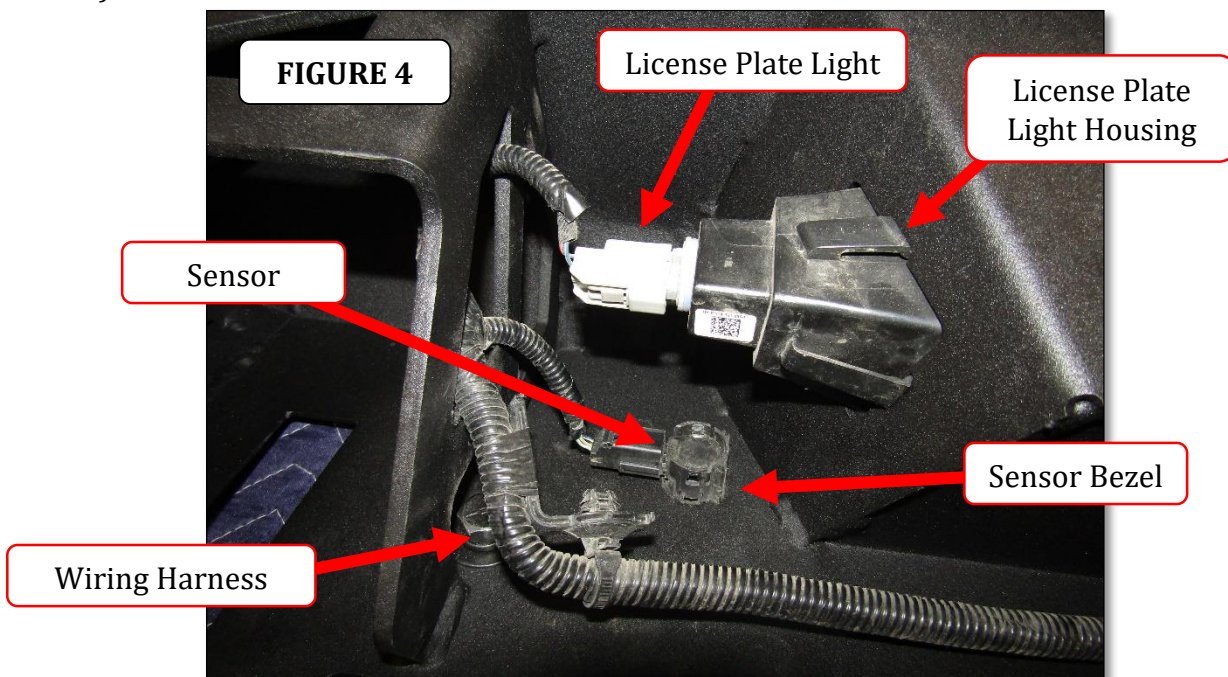
# GO RHINO®

## INSTALLATION INSTRUCTIONS

**Step-3** If equipped with park sensors, Remove the plugs from the bumper replacement and push the sensor bezels into their precut holes in the bumper replacement, (FIGURE 3). Make sure to install the bezels in the same position and order as the OEM bumper.



**Step-4** Transfer the wiring harness for the parking sensor/license plate lights to the bumper replacement. Install the parking sensors into each bezel, making sure to install the sensors in the same order as they were removed from the OEM bumper. Install the license plate lights into the housings, (FIGURE 4).

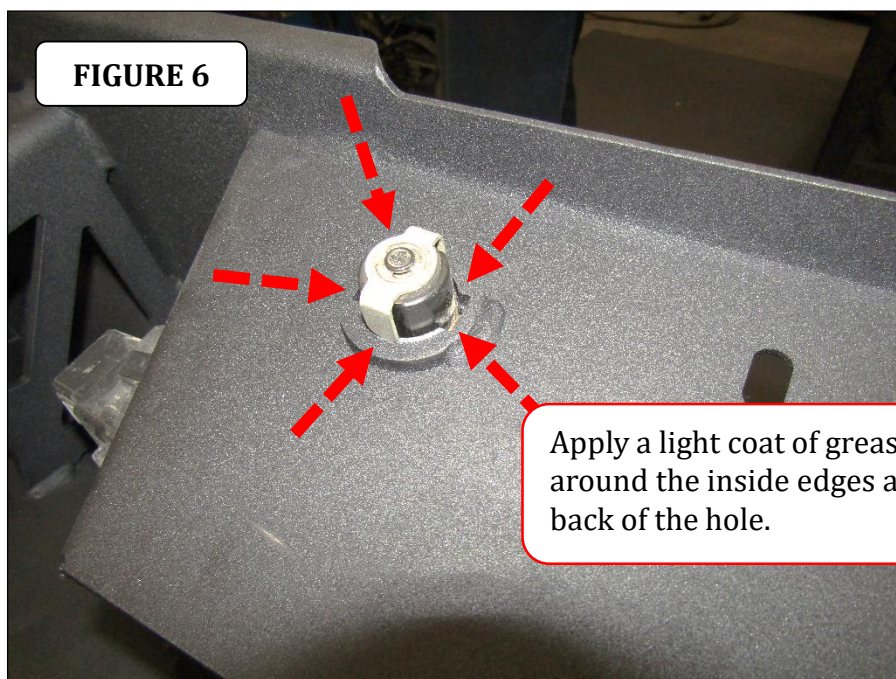
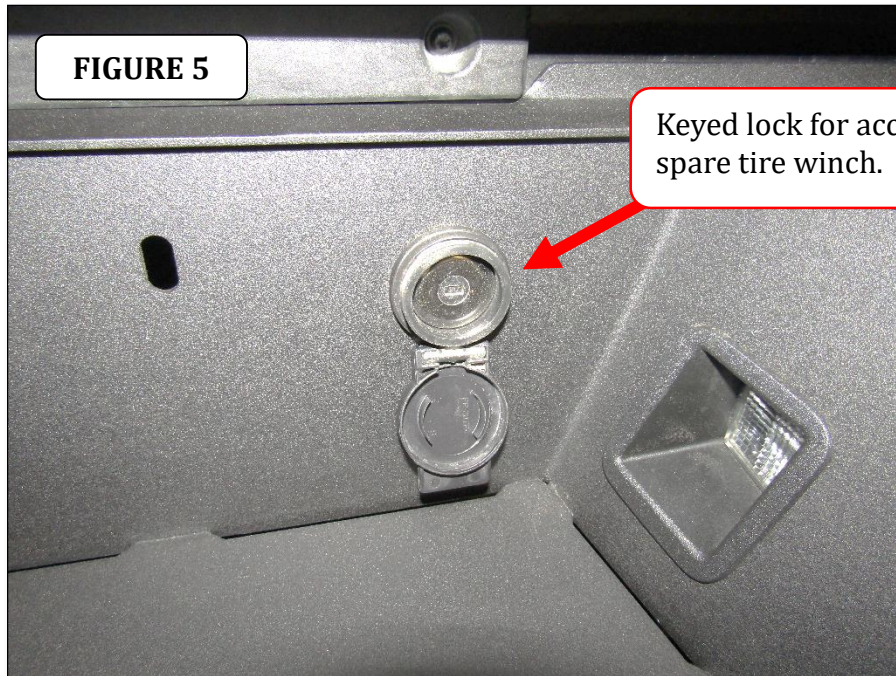




# GO RHINO®

## INSTALLATION INSTRUCTIONS

**Step-5** If equipped, remove the keyed lock for access to the spare tire winch from the OEM bumper, and Install it into its precut hole in the bumper; replacement, (FIGURE 5 & 6). It is recommended to apply a light coat of grease around the inside edges and back of the hole, then remove and re-install the lock several times until the lock removes freely from the bumper shell.

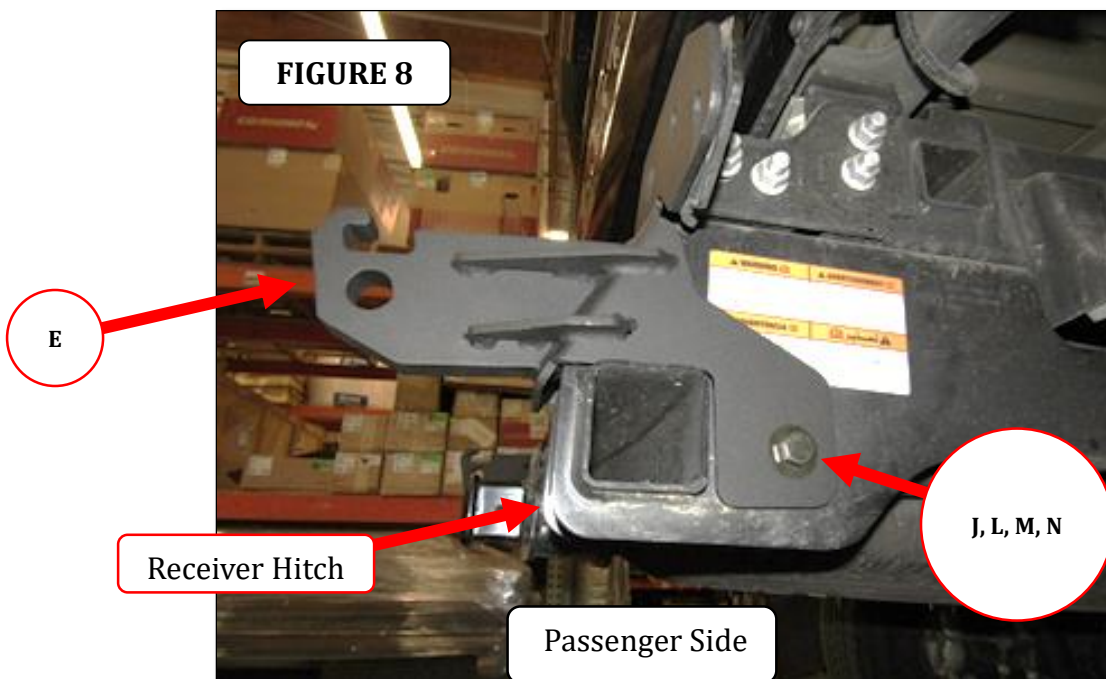
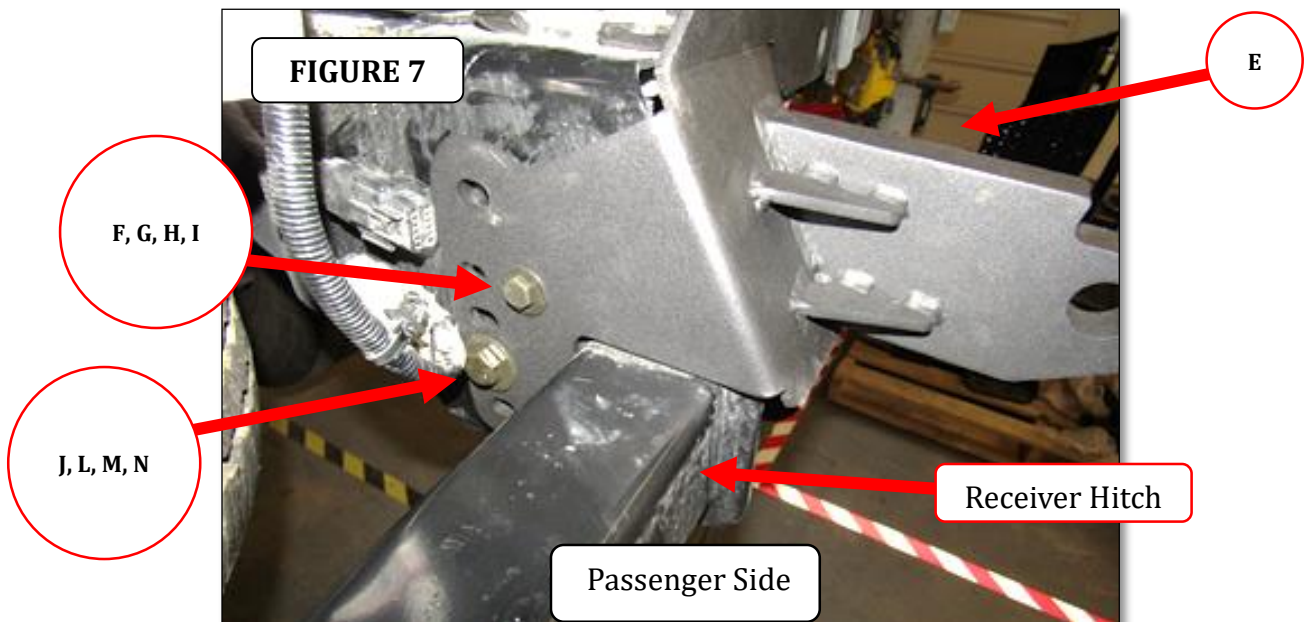


# GORRHINO®

## INSTALLATION INSTRUCTIONS

**Step-6** Beginning on the passenger side remove the clips securing the wiring harness to the side of the receiver hitch.

**Step-7** Position the passenger side frame bracket on the sides of the receiver hitch, align the holes in the frame bracket with the matching holes in the receiver hitch and secure the frame bracket to the receiver hitch using the supplied 3/8" and 1/2" bolts, washers and nuts, (FIGURE 7 & 8). Leave the nuts and bolts loose for final adjustment. Repeat to install the driver side frame bracket.

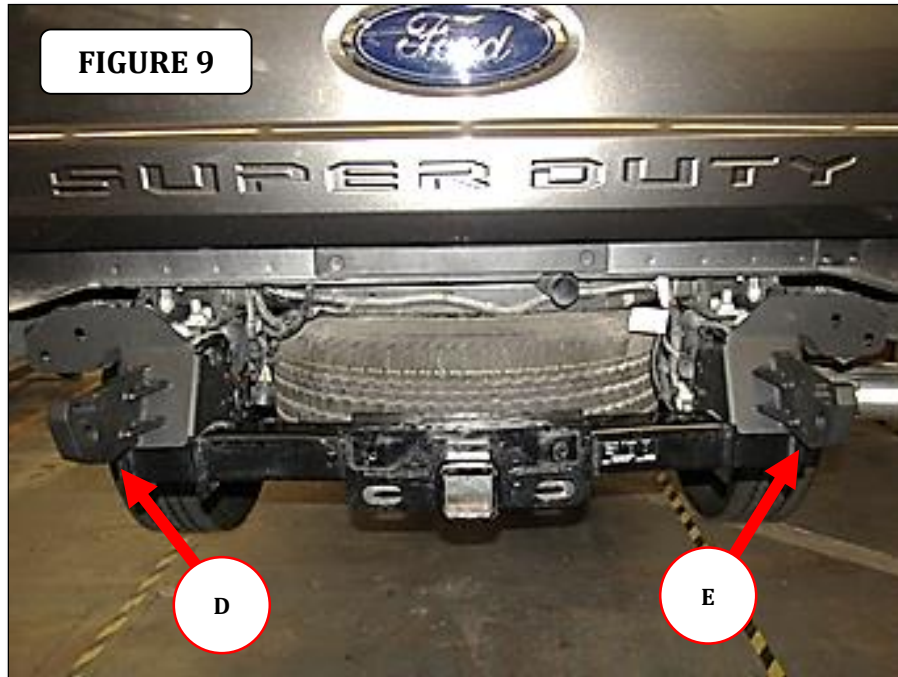




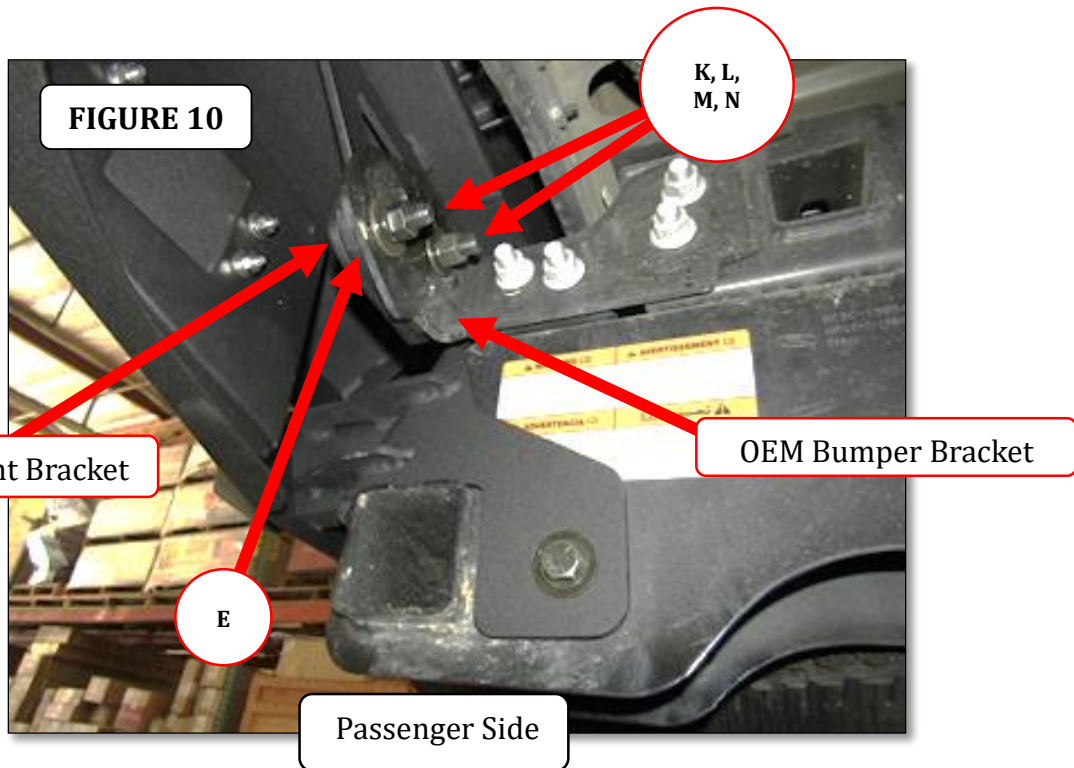
# GO RHINO®

## INSTALLATION INSTRUCTIONS

**Step-8** Repeat to install the driver side frame bracket, (FIGURE 9).



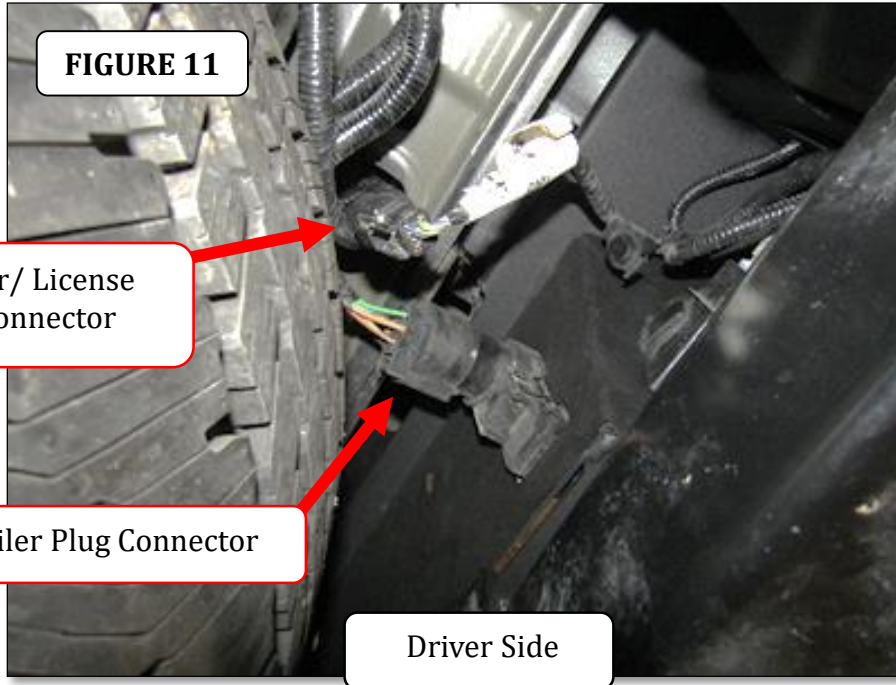
**Step-9** With assistance attach the bumper replacement bracket to each frame bracket and the OEM bumper bracket using (2) ½" x 2" hex bolts, (4) ½" flat washers, (2) ½" lock washers and (2) ½" Hex nuts, (FIGURE 10).



# GO RHINO®

## INSTALLATION INSTRUCTIONS

**Step-10** Reconnect the trailer plug, and the parking sensor/license plate light wiring connector to the vehicle wiring harness connector, (FIGURE 11).



**Step-11** Align the bumper replacement with the vehicle, verify that the tailgate clears the top of the bumper replacement when lowered, then tighten all nuts and bolts, (FIGURE 12). Remember to check and retighten all nuts and bolts periodically.



Learn more about off-road bumpers we have.