



Installation Instructions

BR20 Rear Bumper Replacement Part Number 28171T

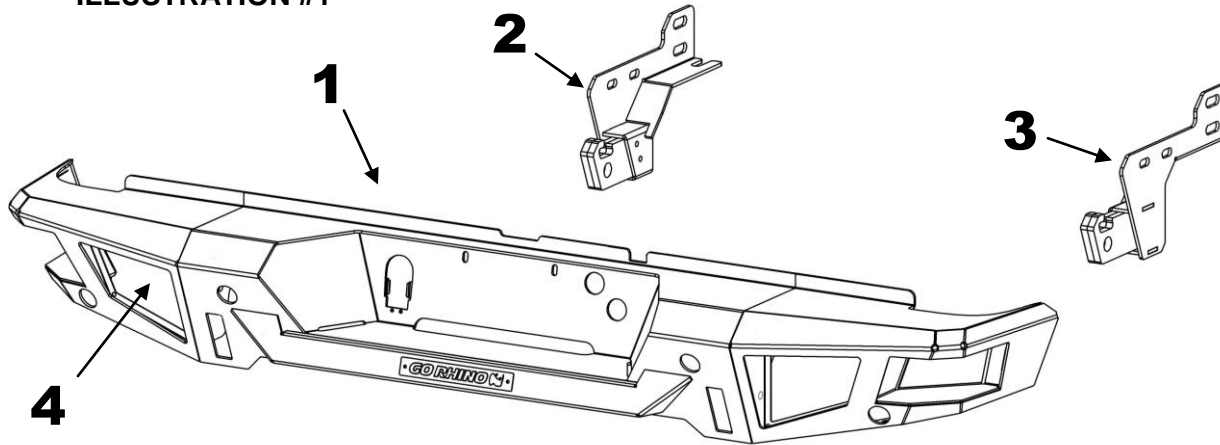
2014-2016 Chevrolet Silverado 1500 2/4WD

Do not attempt to install this product on any vehicle other than the one listed above!

Parts List

Item	Qty.	Part #	Description	Item	Qty.	Part #	Description	Torque
1		1	Bumper Replacement Shell	10	10		10-32 x 3/4" Button Head Bolt	65 In. Lbs
2		1	Driver Side Frame Bracket	11	10		10-32 Nylon-Insert Lock Nut	
3		1	Passenger Side Frame Bracket	12	2		M10-1.5 Hex Nut	
4		2	Flush Mount Light Pod Plate	13	2		M10 Flat washer	
5		2	LED License Plate Light	14	2		M10 Lock washer	
6		2	Sensor Bezel Plate (inner)	15	4		1/2" x 1 1/2" Hex Bolt	65 Ft. Lbs
7		1	Sensor Bezel Plate (passenger outer)	16	8		1/2" Flat Washer	
8		1	Sensor Bezel Plate (driver outer)	17	4		1/2" Lock Washer	
9		6	Round Plug	18	4		1/2" Hex Nut	
				19	2		M14-2.0 Hex Nut	88 Ft. Lbs
				20	2		M14 Flat Washer	
				21	2		M14 Lock Washer	

ILLUSTRATION #1



Tool Required:

13mm, 15mm, 17mm, 18mm, 21mm, 22mm, 3/8" & 3/4" Sockets
 13mm, 15mm, 17mm, 18mm, 21mm, 22mm, 3/8" & 3/4" Wrenches
 Slotted Blade Screw Driver
 1/8" Hex Key
 Ratchet, Ratchet Extensions & Swivel Joint Adapter
 12V Circuit Tester

Approximate installation time: 90 min

Read the assembly and installation instructions completely and verify that all of the parts listed are accounted for.

To maintain and care this product keep it clean and do not use abrasive cleaners or polish waxes.

Texture Painted Finish: Mild liquid detergent may be used. **Polished Stainless & Semi Gloss Painted Finishes:** We recommend using only non-abrasive automotive wax such as pure carnauba to avoid scratches and rust.

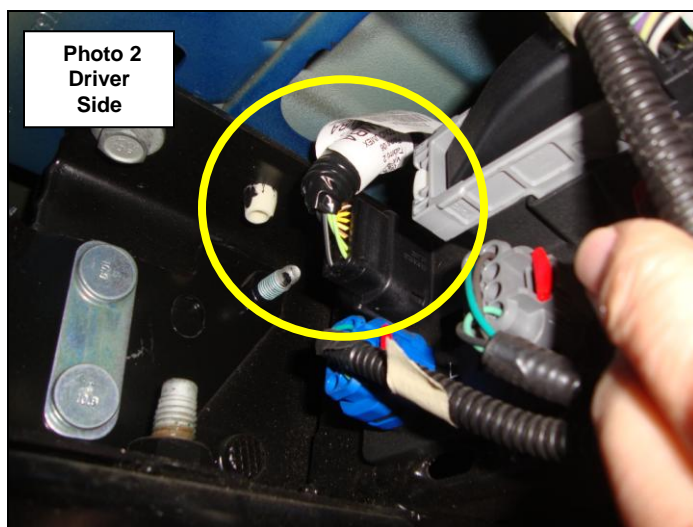
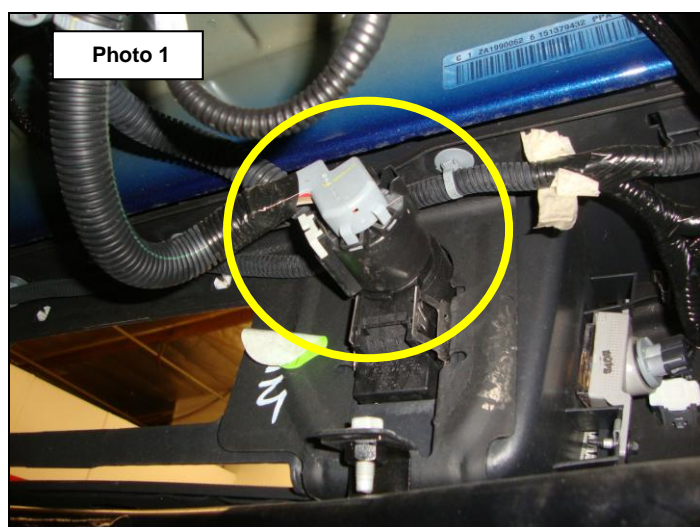
Factory Bumper Removal

Step-1 Lower and remove the spare tire to access the factory bumper attachment bolts and vehicle wiring.

Step-2 Disconnect the vehicle battery or batteries.

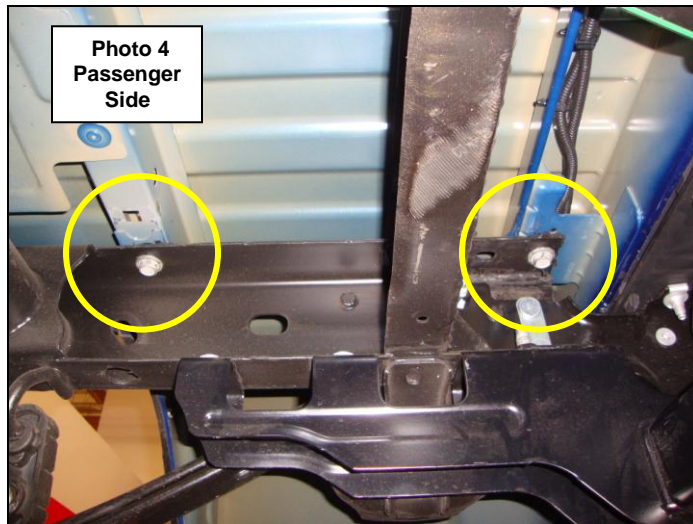
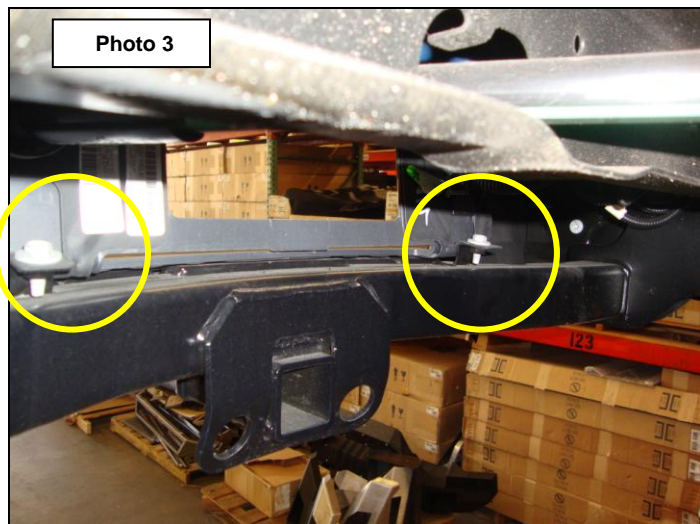
Step-3 Disconnect the trailer plug wiring harness from the factory bumper, (Photo 1).

Step-4 Disconnect the bumper wiring harness from the vehicle, (Photo 2).

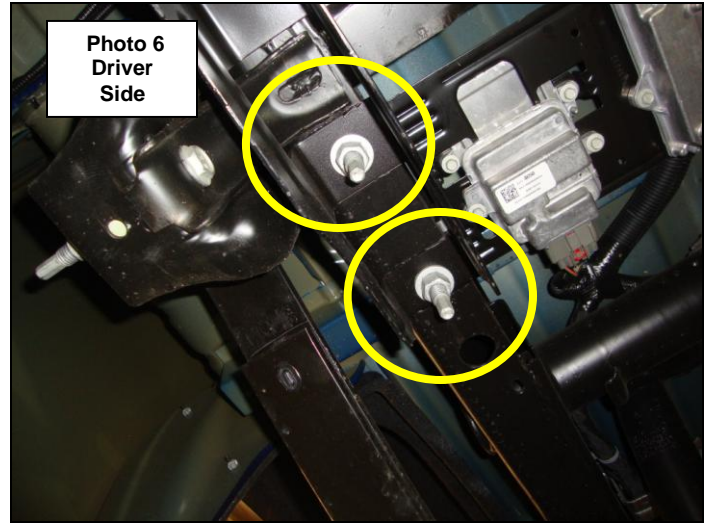
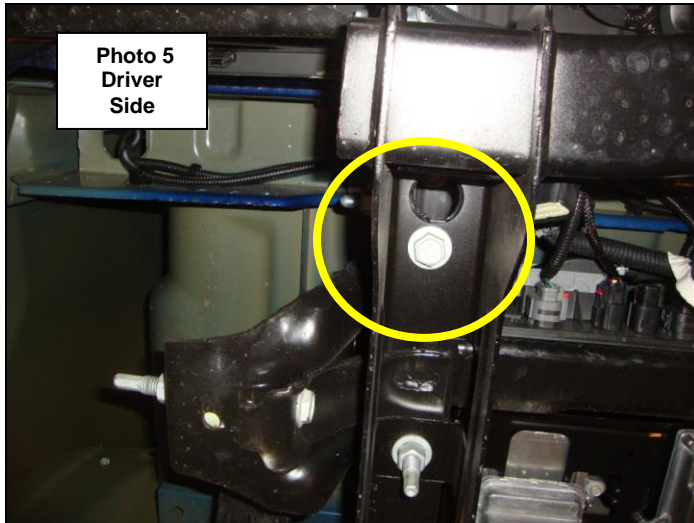


Step-5 Remove the (2) bolts securing the factory bumper to the receiver hitch, (Photo 3).

Step-6 On each side of the vehicle toward the end of the frame, loosen the (2) bolts securing the bed to the frame, (Photo 4).

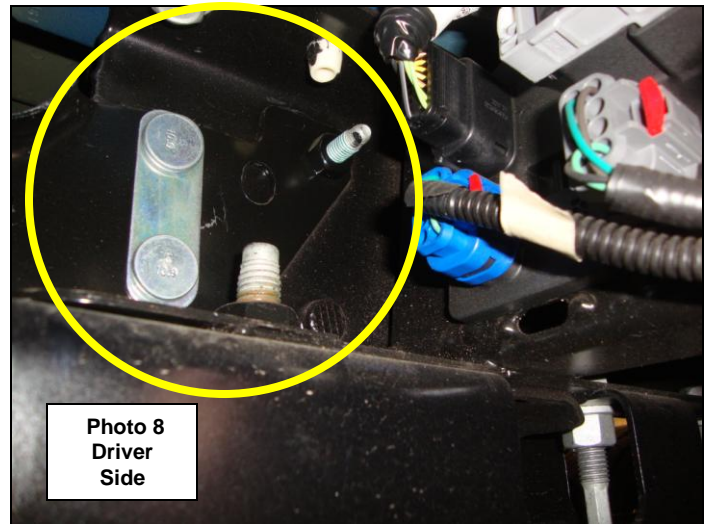
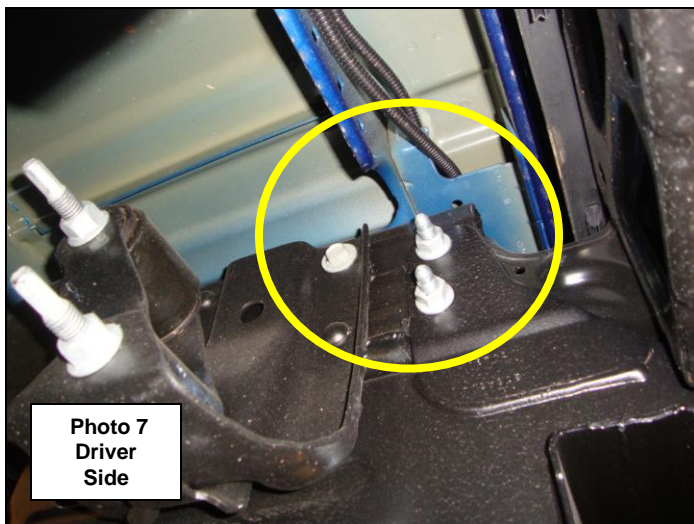


Step-7 On each side of the vehicle, remove (1) bolt, (Photo 5) and loosen the (2) nuts and bolts (photo 6) securing the receiver hitch and factory bumper bracket to the frame.



Step-8 On each side of the vehicle, remove (1) bolt securing the rear spring hanger and bumper bracket, and the (2) nuts and bolt plate securing the bumper bracket to the frame, (Photo 7 & 8).

Step-9 With assistance, remove the factory bumper and brackets by slightly lifting the bed off the frame, and pulling the bumper rearward away from the vehicle. Tighten the bolts securing the bed.



Step-10 Remove the license plate, disconnect the license plate lights, and If equipped disconnect the backup sensors from the factory bumper wiring harness.

Step-11 Remove the wiring harness from the factory bumper.

BR20 Bumper Replacement Installation

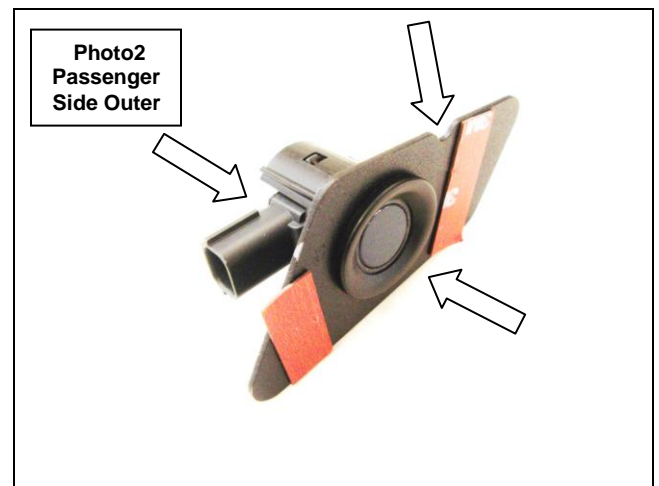
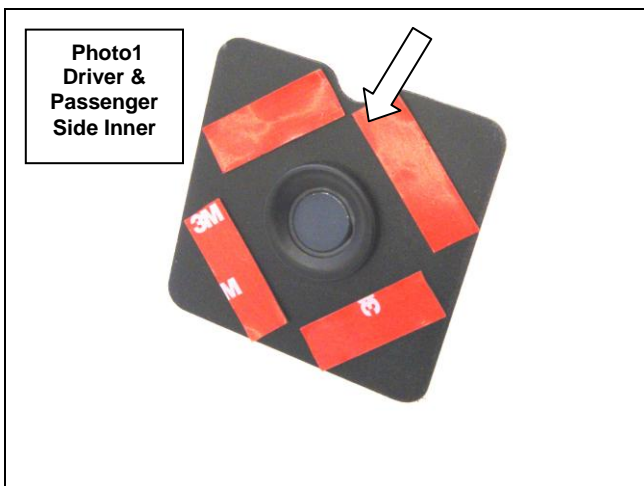
Note: if your vehicle is not equipped with rear **Park Assist** install the supplied round plugs in the holes in the replacement bumper and proceed to Step 7.

Note: If you are replacing a bumper with rear **Park Assist**, the sensor detection zone will be altered with use of this bumper replacement.

Step-1 If the vehicle is equipped with rear **Park Assist**, remove each sensor from the bezel by gently spreading the bezel tabs and pulling out on the back of the sensors. Note: Do not push on the front of the sensor as this may damage the sensor.

Step 2 Remove the sensor bezels from the factory bumper by depressing the (4) tabs around the base and pushing the bezel out through the front of the bumper. Note: The sensors and bezels have to be positioned in the replacement bumper in the same location (inner and outer), (driver and passenger) as removed from the factory bumper.

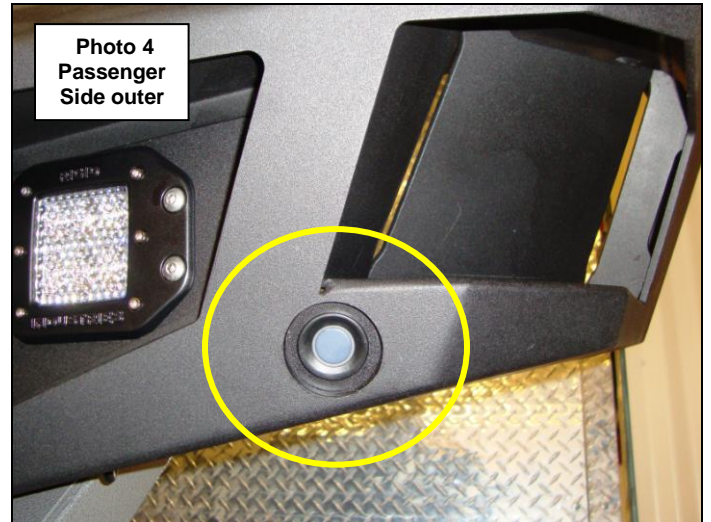
Step-3 Install the sensor bezels and sensors in the (inner and outer) bezel plates, (Photo 1 & 2). Line up the protrusions on the bezel with the profile in the bezel plate; push the bezel through the profile in the plate until the tabs around the base lock in position, then install the sensor in the bezel. Note: The notch in the bezel plate designates the top.



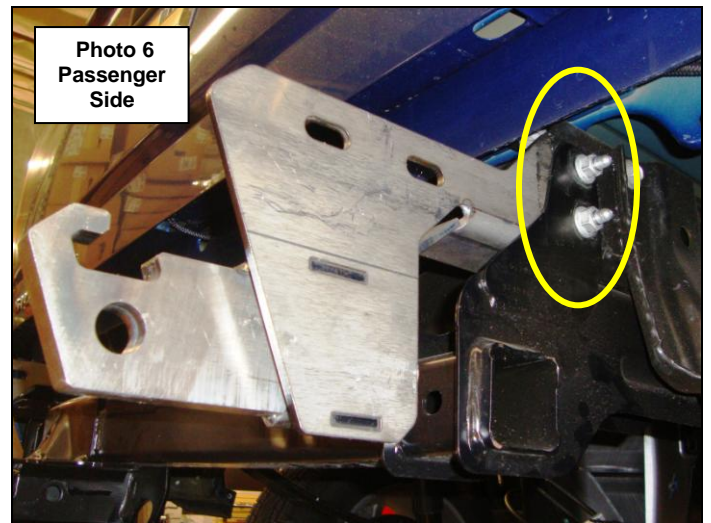
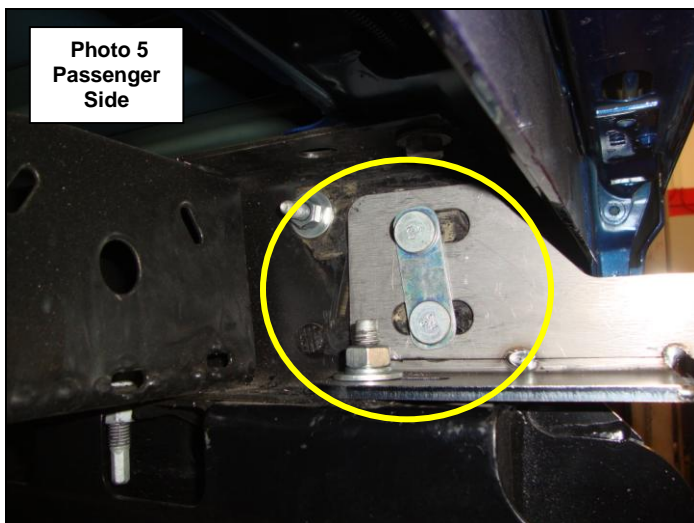
Step-4 Prepare the inside surface of the bumper shell where the bezel plates will be mounted with Isopropyl alcohol. A clean, dry surface is required in order for tape to stick properly.

Step-5 Peel the backing off from the double sided tape to uncover the adhesive. From inside the bumper shell position each bezel, sensor and bezel plate assembly, making sure the sensor bezel is centered in the hole provided in the bumper shell, (Photo 3 & 4).

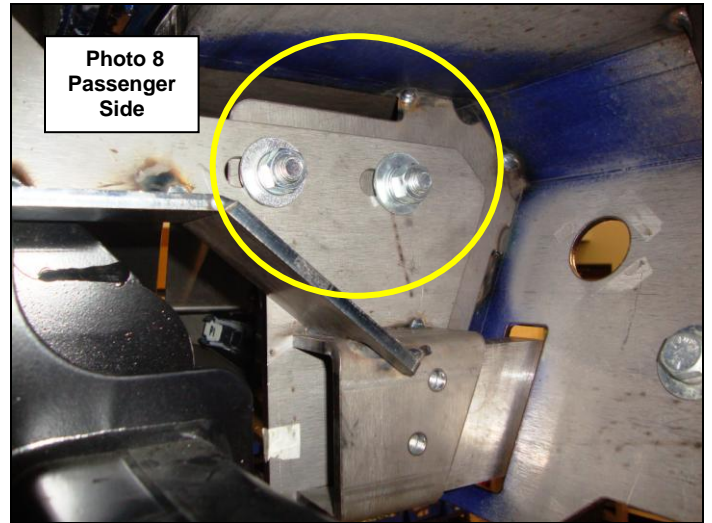
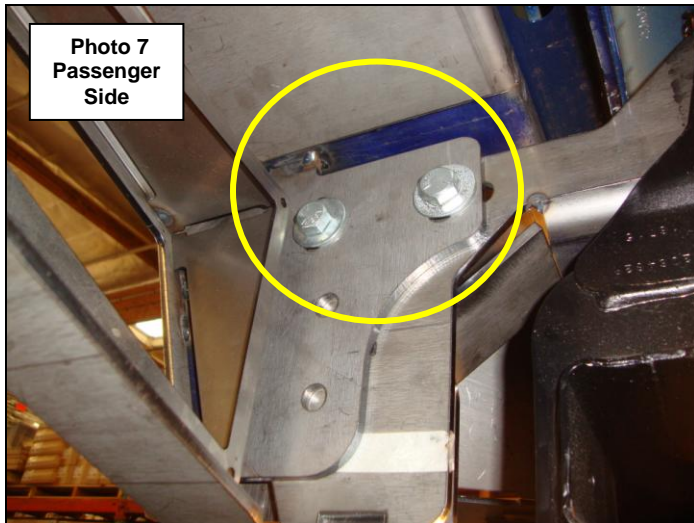
Step-6 Stick the assembly in place and apply firm pressure for about 30 seconds. The tape needs to bond with the mounting surface, and it needs pressure to do this. The bezel mounting plate will seem like it is stuck on, but continue pressing for at least 30 seconds. Note: At room temperature approximately 50% of ultimate bond strength will be achieved after 20 minutes, 90% after 24 hours and 100% after 72 hours.



Step-7 Position the passenger side frame bracket inside the frame rail and secure the frame bracket and receiver hitch to the bottom of the frame using the factory M14 bolt, and supplied M14 flat washer, lock washer and hex nut. Secure the frame bracket to the side of the frame using the factory M12 bolt plate and M12 hex nuts, (Photo 5 & 6). Leave the nuts and bolts loose for final adjustment. Repeat to this step to install the driver side frame bracket.

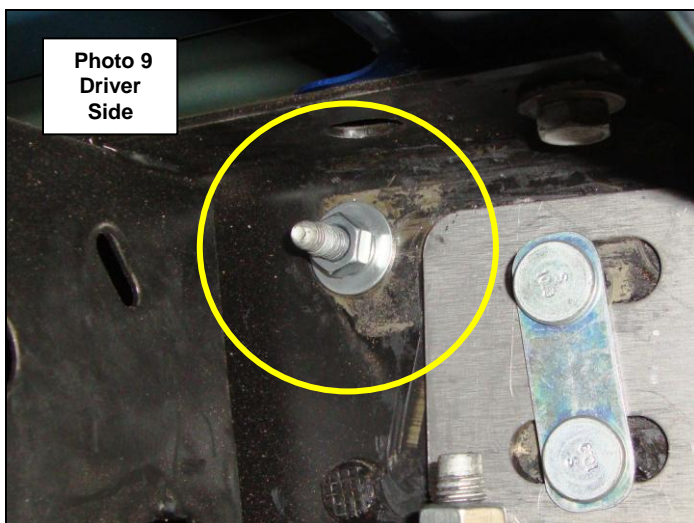


Step-8 With assistance attach the bumper shell brackets to each frame bracket using (2) ½" x 1 ½" hex bolts, (4) ½" flat washers, (2) ½" lock washers and (2) ½" Hex nuts, Align the bumper shell with the vehicle, verify that the tailgate clears when lowered, and tighten all nuts and bolts, (Photo 7 & 8).



Step-9 Reinstall the driver and passenger side rear spring hanger factory M10 bolts using the supplied M10 flat washers, lock washers and nuts, (Photo 9).

Step-10 Remove the trailer plug from the factory bumper and install it in the replacement bumper shell, and reconnect the wiring harness, (Photo 10).



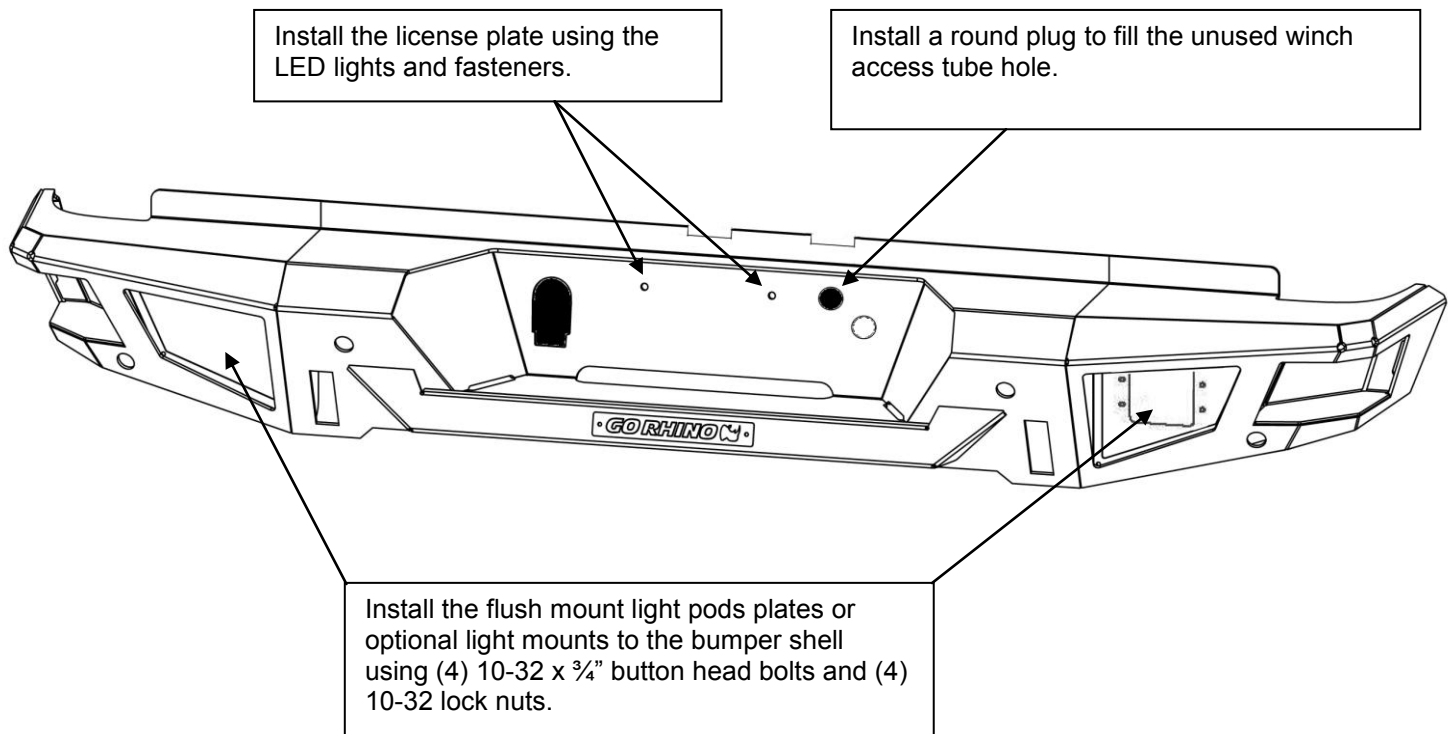
Step-11 Reconnect the factory bumper wiring harness to the sensors and to the vehicle wiring harness.

Secure (cable tie) the spare tire winch access tube to the frame, and use the supplied round plug to fill the unused access tube hole in the rear bumper replacement.

Step-12 Install the license plate using the supplied LED lights and fasteners to the bumper shell. Use a circuit tester to find the hot and ground from the factory license plate light wiring, and then splice the wires from the supplied lights.

Step-13 Install the supplied rectangular and round plugs to fill the unused winch access tube holes in the bumper shell.

Step-14 Install the supplied flush mount light pods plates or optional light mounts to the bumper shell using (4) 10-32 x $\frac{3}{4}$ " button head bolts and (4) 10-32 lock nuts.



Step-15 Remember to check and retighten all factory and supplied nuts and bolts periodically.