

GORRHINO®

INSTALLATION INSTRUCTIONS



PART NO.

- 273120T

PRODUCT DESCRIPTION:

- TRAILLINE FULL REAR BUMPER

APPLICATION:

- JEEP GLADIATOR

PRODUCT SAFETY & LEGAL DISCLAIMER

- **IMPORTANT READ ALL INSTRUCTIONS CAREFULLY BEFORE INSTALLING, FAILURE TO DO SO MAY CAUSE PERSONAL INJURY OR DAMAGE TO PRODUCT AND/OR PROPERTY.**
- **Review the product package and contents prior to beginning the installation.** Take care when opening the packaging and removing items. If a return is needed you will want to return the product in its original packaging if possible.
- This instruction guide is provided as a GENERAL installation guide, some vehicles vary dimensionally and may require additional steps.
- Test fit the product on the vehicle prior to any third party modifications and or finishing. The manufacturer and/or distributors do not accept responsibility for third party charges, labor and or third part replacement modifications. Some modifications may void the factory warranty.
- Exercise due-diligence when installing this product. The manufacturer and distributors of this product do not accept any responsibility for vehicle damage or personal injury resulting from the installation of this product. Careless installation and operation can result in serious injury or equipment damage.
- This product is for general off-road use. All liability for installation and use rests with the owner/operator.
- **INSTALLER:** Once installation is complete, please return this guide along with other documentation included in this product back to the consumer for future reference. The manufacturer/distributors of this product do not guarantee this particular version will be available at a later date.



INSTALLATION INSTRUCTIONS

INJURY HAZARD

Please complete a shop and tool inspection prior to beginning the installation.

- Always make sure you have a clean, dry and well lit work area.
- Always remove jewelry, loose fitting clothing and wear protective gloves and eye protection.
- Always use extreme caution when jacking or raising a vehicle for work. Set the emergency brake and use tire/wheel blocks and jack stands. Refer to the vehicle manufacturer hand book. Utilize the vehicle manufacturers designated lifting points.
- Always use appropriate and adequate care in lifting parts during disassembly and installation. Seek help in lifting heavy or large items into place. Utilize jacks and or lifting devices when available.
- Always insure products are secure during disassembly and installation.
- Always wear eye protection and take steps to protect any exposed skin during the installations. Drilling, cutting and grinding plastic and metal may create flying particles that can cause injury.
- Always use extreme caution when drilling, cutting and or grinding on a vehicle. Thoroughly inspect the area to be drilled, on both sides of material, prior to modification and relocate any objects that may become damaged.
- Always assemble and tighten all fasteners per the installation instructions.
- Always route electrical cables carefully. Avoid moving parts, parts that may become hot and rough or sharp edges.
- Always insulate and protect all exposed wiring and electrical connections.

MAINTENANCE AND CARE

- Always perform regular inspections and maintenance on mounts and related fasteners.
- Periodically check and tighten all fasteners.
- Stripped, fractured, or bent fasteners must be replaced.
- After washing the vehicle make sure to fully dry all surfaces.
- In areas with cold temperatures make sure to wash the product often to remove harmful materials used on road ways.
- Never use abrasive cleaners or polish compounds. Clean with a gentle soap and water. If you use wax use a non-abrasive automotive wax such as pure carnauba wax.

WARNING

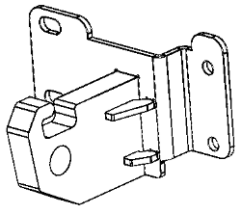
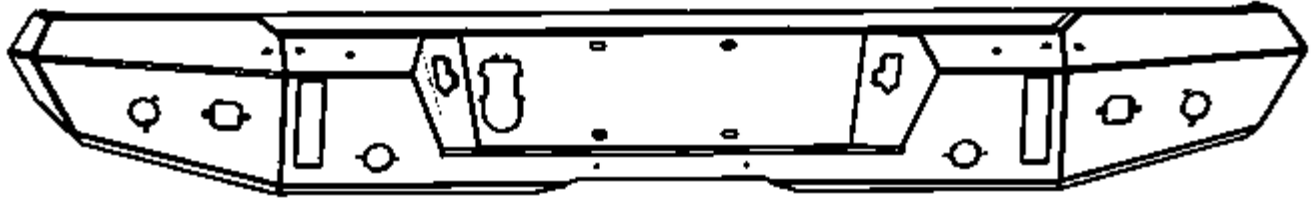
Some products have been designed to work together with factory rear sensor systems, factory forward facing sensor systems and factory air bags.

- Installation of some of these products may alter the factory sensor system performance.
- Factory sensors may read shackles or hooks protruding from the fairlead and or tow hooks.
- All sensor testing is completed by Go Rhino Products and or third party testing labs on modified vehicles.
- Sensor sensitivity, factory sensor housing, orientation, and operating conditions are all variables that will influence functionality of the sensors.
- Installation of some product may effect the factory air bag systems.
- Some products allow the use of third party products such as winches, shackles, hooks, etc. Follow the respective manufacturers operating instructions for use with our products.
- Make sure to fully understand the product, it's intended use and operation prior to use.
- Above all... be safe!

GO RHINO®

INSTALLATION INSTRUCTIONS

PARTS INCLUDED IN THIS LIST:



QTY	DESCRIPTION
1	TRAILLINE BUMPER REPLACEMENT
1	TRAILLINE REAR BRACKETS (PAIR)
12	½" FLAT WASHER
8	½" LOCK WASHER
8	½" HEX NUT
4	½" x 1 ½" CARRIAGE BOLT
4	½" x 1 ½" HEX BOLT

Go Rhino recommends you, the installer, read this installation instruction manual from front to back before installing the product.

TOOLS NEEDED FOR INSTALLATION:

- ¾ Wrench
- ¾ Socket

Plastic Bumpers W/ Sensors Require Additional Parts From Mopar

68341888AA SENSOR MOUNTING
68341889AA SENSOR MOUNTING
68341892AA SENSOR MOUNTING
68341893AA SENSOR MOUNTING

6UD40RXFAA PARK DISTANCE
6UD41RXFAA PARK DISTANCE
6UD42RXFAA PARK DISTANCE
6UD43RXFAA PARK DISTANCE

If you desire to add lights to the rear bumper, it will accept a Rigid Ignite Flush Mount Light or compatible style light.

ESTIMATED TIME FOR INSTALLATION:

1.5-2 hours

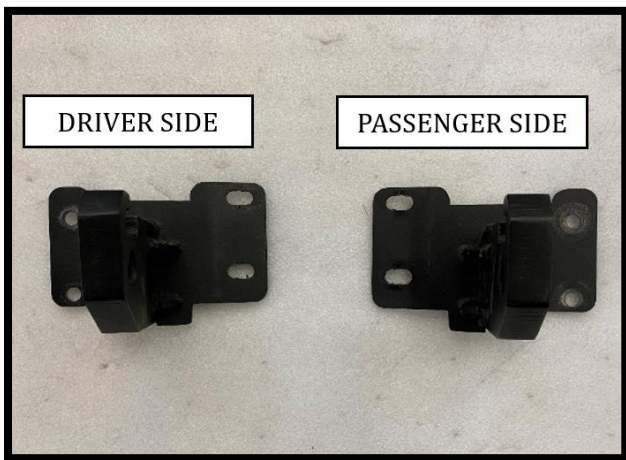
GORRHINO®

INSTALLATION INSTRUCTIONS



STEP

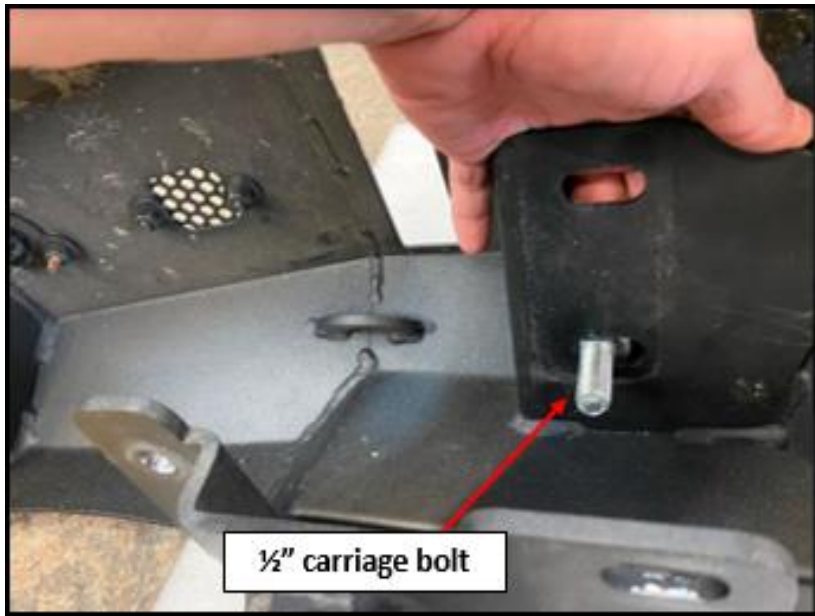
- For removal of the factory bumper, please refer to your vehicle repair manual.
- After you remove your factory bumper, you should only have the OEM bumper mounts. Be sure to remove the OEM license harness (parking sensor harness, if equipped) as it will be reused on this install. Refer to your OEM repair manual for removal instructions.
- If equipped with park sensors remove the wiring harness, sensors, mounting rings and bezels from the OEM bumper. Note: The sensors, mounting rings and bezels have to be positioned in the Trailine rear bumper in the same location (inner and outer), (driver and passenger) as removed from the OEM bumper.
- Identify rear brackets by driver and passenger side.



Lay bumper on a protective surface to prevent finish from damage. You'll need to preassemble the rear brackets onto the bumper. Determine where each bracket goes on the backside of the bumper.

GO RHINO®

INSTALLATION INSTRUCTIONS



PARTS AND HARDWARE NEEDED	
QTY	DESCRIPTION
1	TRAILLINE BUMPER REPLACEMENT
1	TRAILLINE REAR BRACKETS (PAIR)
4	1/2" FLAT WASHER
4	1/2" LOCK WASHER
4	1/2" x 1 1/2" CARRIAGE BOLT
4	1/2" HEX NUT

To assemble brackets to the rear bumper, you'll need 4 qty 1/2 x 1 1/2" carriage bolts, 4 qty 1/2" flat washers, 4 qty 1/2" lock washers and 2 qty 1/2" nuts. Install each carriage bolt through the back of the welded bumper bracket so it's exposed as a threaded stud. Position bracket onto exposed stud, then install flat washer, followed by lock washer and finally, nut. Fasten down finger tight and repeat step for remaining bracket hardware. See figure () for fully assembled bumper with brackets.

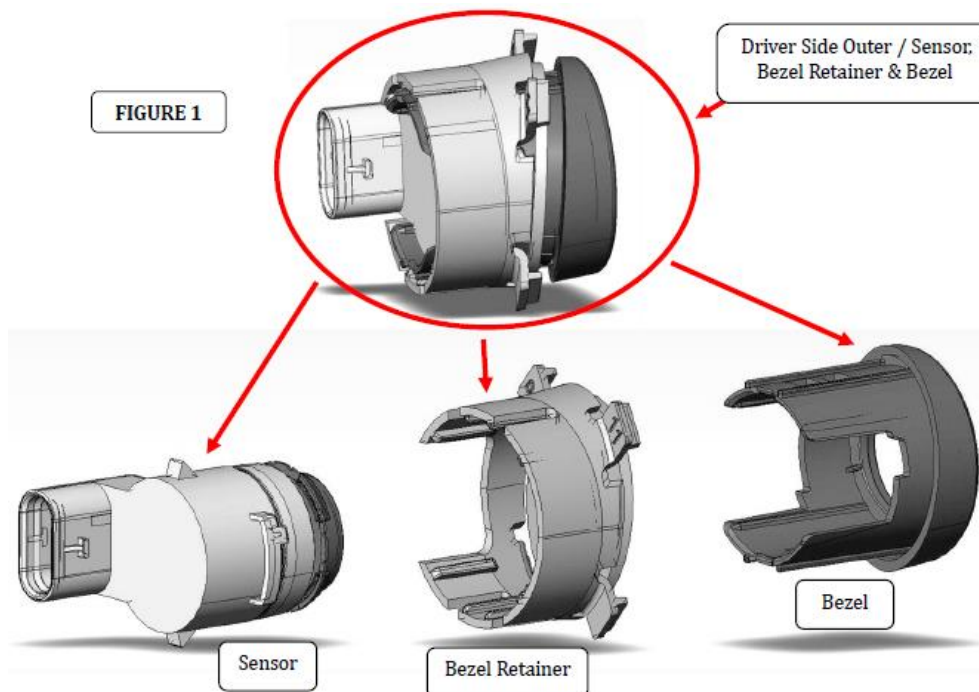


INSTALLATION INSTRUCTIONS

Tralline Bumper Installation

If equipped with park sensors remove the wiring harness, sensors, mounting rings and bezels from the OEM bumper. **Note:** The sensors, mounting rings and bezels have to be positioned in the Tralline rear bumper in the same location (inner and outer), (driver and passenger) as removed from the OEM bumper.

- Unplug the sensors from the wiring harness and remove the wiring harness from the OEM bumper.
- Remove the sensor by spreading the tabs on the bezel and releasing the sensor out the back side of the bumper.
- Spread the tabs on the bezel retainer to release it from the bezel.
- Press the tabs in on the bezel to push it out the front side of the bumper.



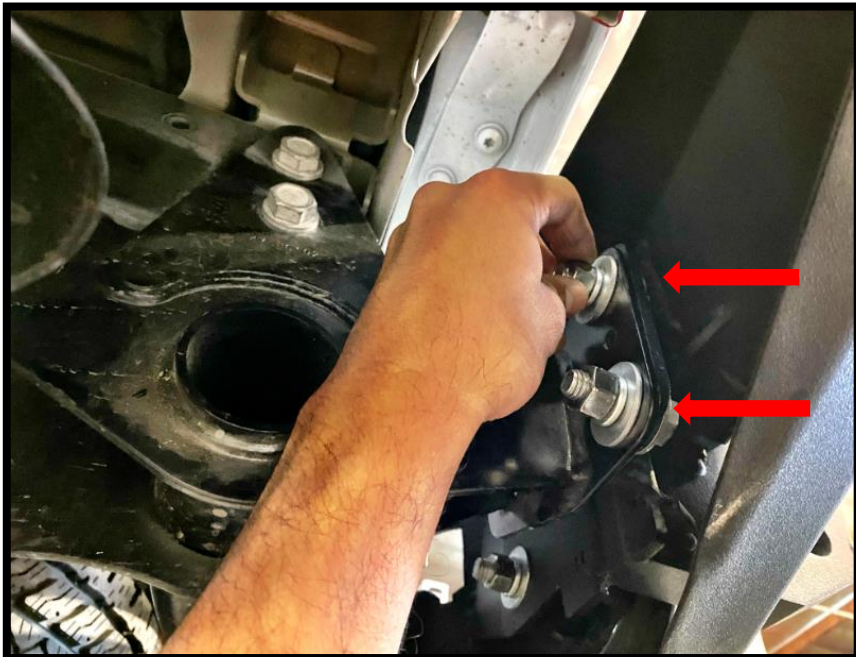
- Remove the (4) plastic plugs from the bezel brackets that are preinstalled in the Tralline rear bumper,
- Install the OEM parking sensors in the Tralline rear bumper by pressing each bezel in from the front of the bumper into place in the bezel bracket, then press the bezel retainer onto the bezel from the backside. Next press the sensor into the bezel from the back side.
- Transfer the OEM bumper wiring harness to the Tralline rear bumper and connect to the parking sensors.

GORRHINO®

INSTALLATION INSTRUCTIONS



With assistance, position bumper onto OEM bumper mounts.



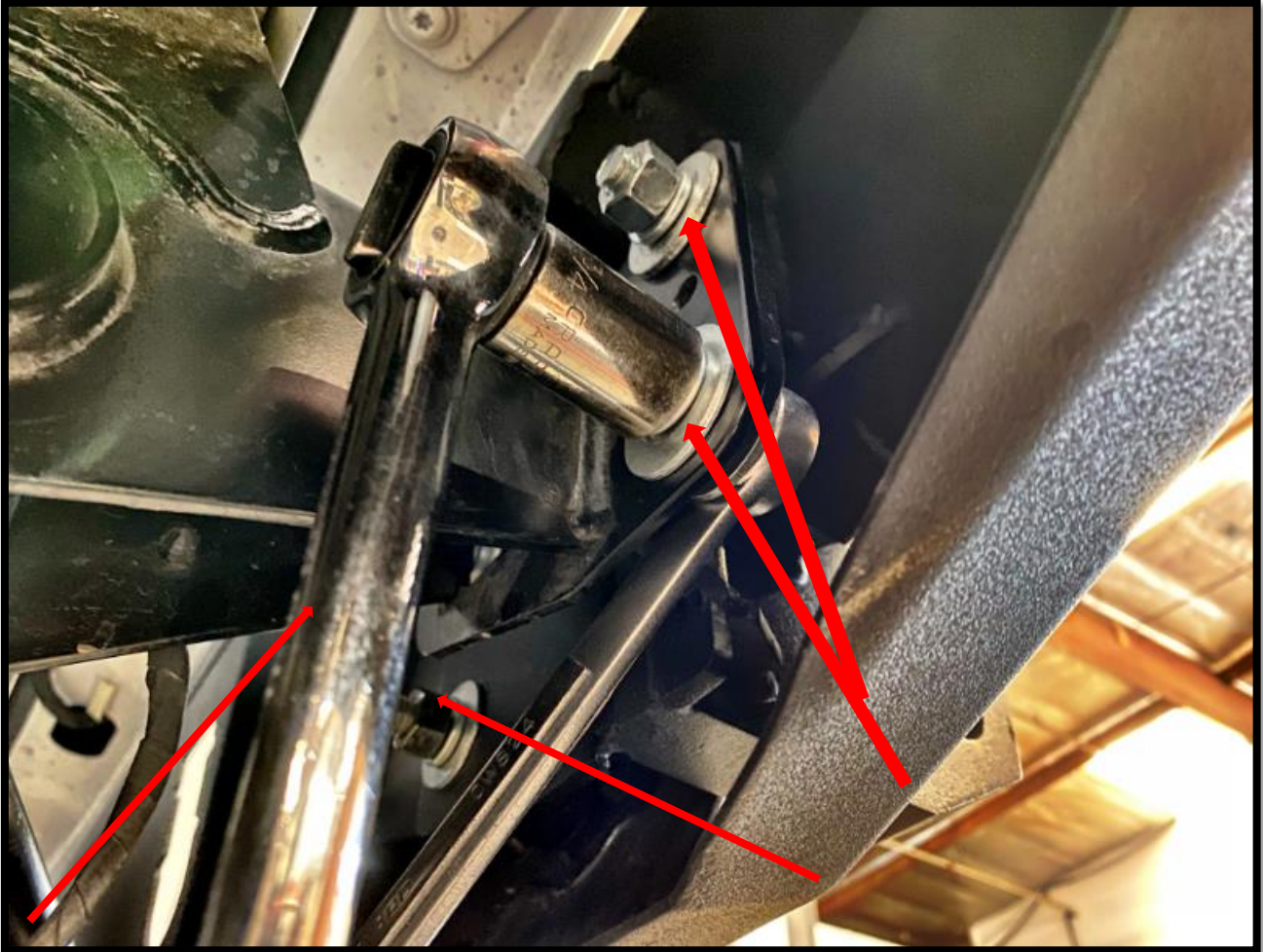
PARTS AND HARDWARE NEEDED

QTY	DESCRIPTION
8	½" FLAT WASHER
4	½" LOCK WASHER
4	½" x 1 ½" HEX BOLT
4	½" HEX NUT

Position one hex head bolt with flat washer on the backside of the Trailline bumper. It should be an exposed stud once positioned onto OEM bumper mount. Install flat washer, lock washer and hex nut. Leave finger tight. Repeat the same steps for the remaining mounting provisions (4 total).

GO RHINO®

INSTALLATION INSTRUCTIONS



Begin to fasten ½" hardware with ¾" wrench or socket. Be sure to fasten all four nuts (4 per side). Begin to align bumper to square up with the bed.

*******Warning*******

It is the installers responsibility to check tailgate clearance when adjusting the bumper. Failure to do so will result in damage to the tailgate or prevent it from opening.

GO RHINO®

INSTALLATION INSTRUCTIONS



Reinstall OEM license plate lights (left and right). Refer to OEM manual on how to remove from the OEM bumper.



Reinstall OEM trailer plug. Refer to OEM manual on how to remove from the OEM bumper.

Reconnect license plate light harness and trail plug harness. Please note that the harness(s) might be loose, so secure it with the appropriate tape or zip tie (if desired). Verify that electrical components are operating.