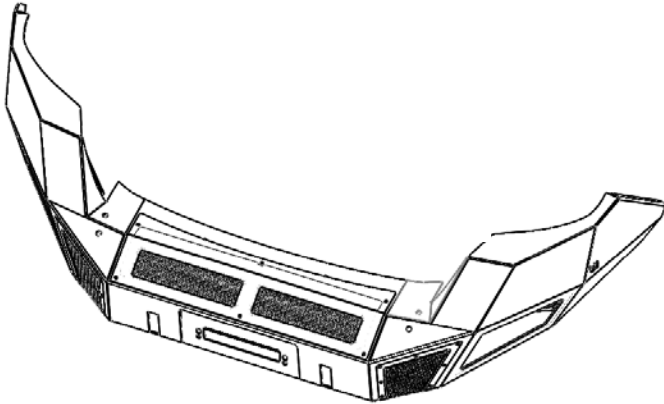


# GO RHINO®

## INSTALLATION INSTRUCTIONS

PART NO.

● 24388T



PRODUCT DESCRIPTION:

● FRONT BUMPER  
REPLACEMENT

APPLICATION:

● TOYOTA TACOMA

### PRODUCT SAFETY & LEGAL DISCLAIMER

- **IMPORTANT READ ALL INSTRUCTIONS CAREFULLY BEFORE INSTALLING, FAILURE TO DO SO MAY CAUSE PERSONAL INJURY OR DAMAGE TO PRODUCT AND/OR PROPERTY.**
- **Review the product package and contents prior to beginning the installation.** Take care when opening the packaging and removing items. If a return is needed you will want to return the product in its original packaging if possible.
- This instruction guide is provided as a GENERAL installation guide, some vehicles vary dimensionally and may require additional steps.
- Test fit the product on the vehicle prior to any third party modifications and or finishing. The manufacturer and/or distributors do not accept responsibility for third party charges, labor and or third part replacement modifications. Some modifications may void the factory warranty.
- Exercise due-diligence when installing this product. The manufacturer and distributors of this product do not accept any responsibility for vehicle damage or personal injury resulting from the installation of this product. Careless installation and operation can result in serious injury or equipment damage.
- This product is for general off-road use. All liability for installation and use rests with the owner/operator.
- **INSTALLER:** Once installation is complete, please return this guide along with other documentation included in this product back to the consumer for future reference. The manufacturer/distributors of this product do not guarantee this particular version will be available at a later date.



# INSTALLATION INSTRUCTIONS

## INJURY HAZARD

Please complete a shop and tool inspection prior to beginning the installation.

- Always make sure you have a clean, dry and well lit work area.
- Always remove jewelry, loose fitting clothing and wear protective gloves and eye protection.
- Always use extreme caution when jacking or raising a vehicle for work. Set the emergency brake and use tire/wheel blocks and jack stands. Refer to the vehicle manufacturer hand book. Utilize the vehicle manufacturers designated lifting points.
- Always use appropriate and adequate care in lifting parts during disassembly and installation. Seek help in lifting heavy or large items into place. Utilize jacks and or lifting devices when available.
- Always insure products are secure during disassembly and installation.
- Always wear eye protection and take steps to protect any exposed skin during the installations. Drilling, cutting and grinding plastic and metal may create flying particles that can cause injury.
- Always use extreme caution when drilling, cutting and or grinding on a vehicle. Thoroughly inspect the area to be drilled, on both sides of material, prior to modification and relocate any objects that may become damaged.
- Always assemble and tighten all fasteners per the installation instructions.
- Always route electrical cables carefully. Avoid moving parts, parts that may become hot and rough or sharp edges.
- Always insulate and protect all exposed wiring and electrical connections.

## MAINTENANCE AND CARE

- Always perform regular inspections and maintenance on mounts and related fasteners.
- Periodically check and tighten all fasteners.
- Stripped, fractured, or bent fasteners must be replaced.
- After washing the vehicle make sure to fully dry all surfaces.
- In areas with cold temperatures make sure to wash the product often to remove harmful materials used on road ways.
- Never use abrasive cleaners or polish compounds. Clean with a gentle soap and water. If you use wax use a non-abrasive automotive wax such as pure carnauba wax.

## WARNING

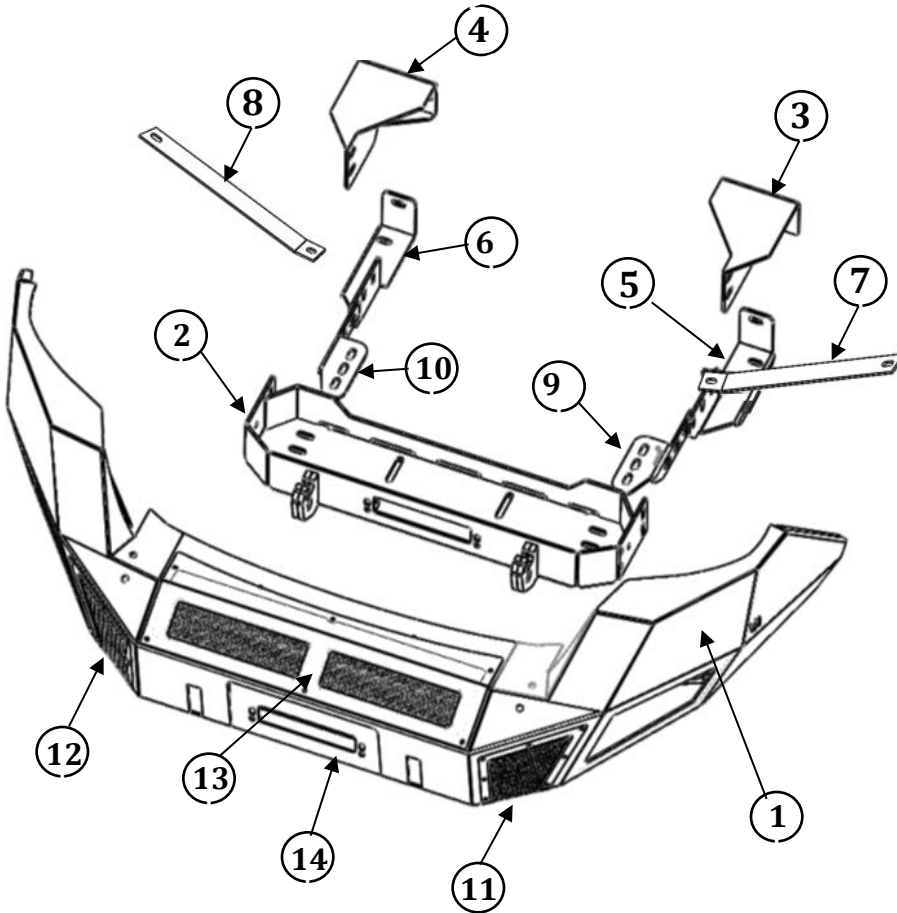
Some products have been designed to work together with factory rear sensor systems, factory forward facing sensor systems and factory air bags.

- Installation of some of these products may alter the factory sensor system performance.
- Factory sensors may read shackles or hooks protruding from the fairlead and or tow hooks.
- All sensor testing is completed by Go Rhino Products and or third party testing labs on modified vehicles.
- Sensor sensitivity, factory sensor housing, orientation, and operating conditions are all variables that will influence functionality of the sensors.
- Installation of some product may effect the factory air bag systems.
- Some products allow the use of third party products such as winches, shackles, hooks, etc. Follow the respective manufacturers operating instructions for use with our products.
- Make sure to fully understand the product, it's intended use and operation prior to use.
- Above all... be safe!

# GO RHINO®

## INSTALLATION INSTRUCTIONS

PARTS INCLUDED IN THIS LIST:



1	1	FRONT BUMPER REPLACEMENT	
2	1	MOUNTING PLATE / WINCH TRAY	
3	1	DRIVER MAIN BRACKET	
4	1	PASSENGER MAIN BRACKET	
5	1	DRIVER AUXILIAR LOWER BRACKET	
6	1	PASSENGER AUXILIAR LOWER BRACKET	
7	1	DRIVER SIDE AUXILIARY BRACKET	
8	1	PASSENGER SIDE AUXILIARY BRACKET	
9	1	DRIVER WINCH TRAY BRACKET	
10	1	PASSANGER WINCH TRAY BRACKET	
11	1	DRIVER SIDE VENT COVER	
12	1	PASSENGER SIDE VENT COVER	
13	1	WINCH COVER	
14	1	LICENSE PLATE BRACKET	
15	2	LIGHT POD PLATE	
16	4	HOLE PLUG	
17	20	½ X 1 ½" HEX BOLT	64 FT/LBS.
18	6	½ X 1 ½" CARRIAGE BOLT	64 FT/LBS.
20	2	½ X 4 ½" HEX BOLT	64 FT/LBS.
21	42	½" FLAT WASHER	
22	26	½" LOCK WASHER	
23	22	½" HEX NUT	
24	2	3/8" x 1 ¼" HEX BOLT	35 FT/LBS.
25	2	3/8" HEX NUT	
26	4	3/8" FLAT WASHER	
27	2	3/8" LOCK WASHER	
28	2	SPACER WASHER	
29	38	¼ x ¾" BUTTON HEAD BOLT	15 FT/LBS.
30	2	3/4" K lath screw 3 FT/LBS.	

Go Rhino recommends you, the installer, read this installation instruction manual from front to back before installing the product.

### TOOLS NEEDED FOR INSTALLATION:

- 3/4" Socket & Wrench
- 10mm Socket & Wrench
- 14mm Socket & Wrench
- 9/16" Socket & Wrench
- Slotted Blade Screwdriver
- Ratchet & Extension

ESTIMATED TIME FOR INSTALLATION:

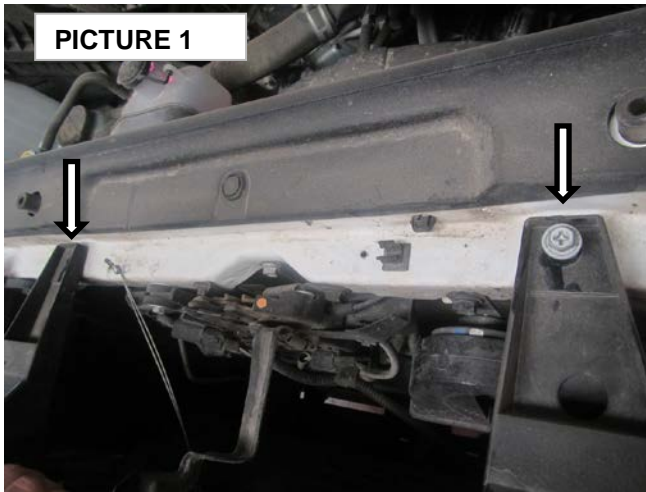
90 Minutes

# GORRHINO®

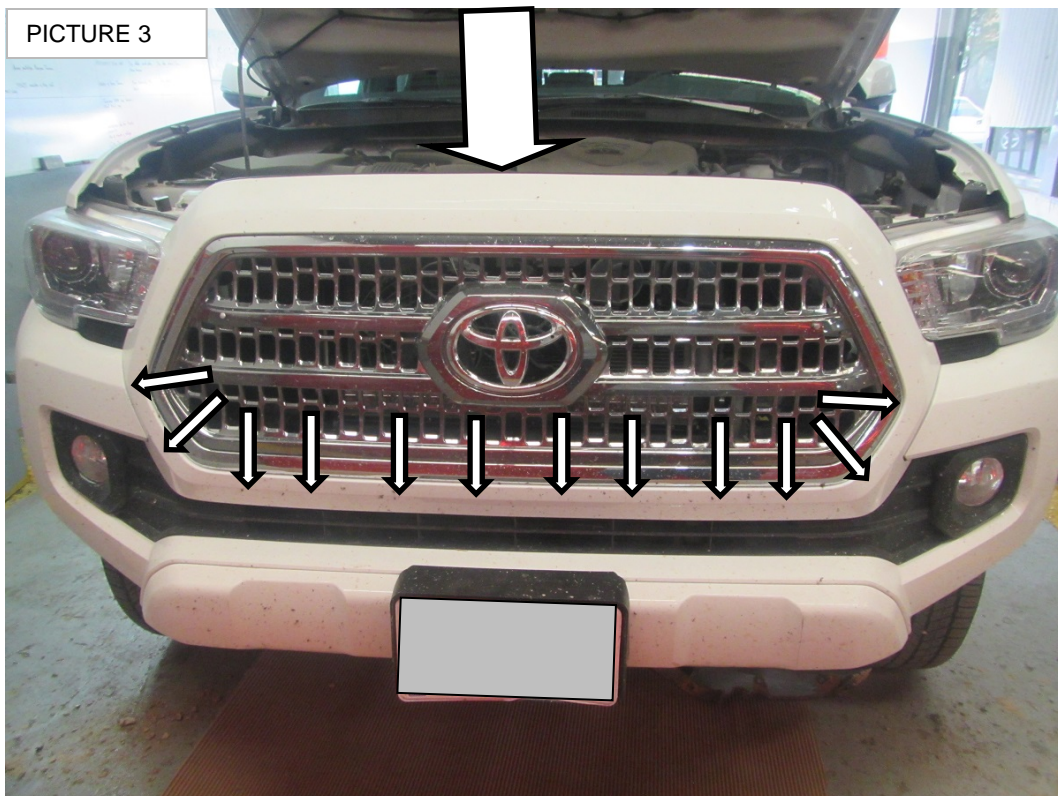
## INSTALLATION INSTRUCTIONS

**Step-1** Begin the installation on the top of the vehicle, remove two grill screws (PICTURE 1 ).

**Step-2** Remove two clip securing in back to the front grille. (PICTURE 2).



**Step-3** Pull up & out the grill holders carefully to the front, and then insert one hand between grill & frame, then remove grill holders (10 clips), then pull out the grill.(PICTURE 3)



# GO RHINO®

## INSTALLATION INSTRUCTIONS

**Step-4** In front half of lower cover, remove the screws from driver & passenger sides as show in pictures 4, 5, 6 & 7.



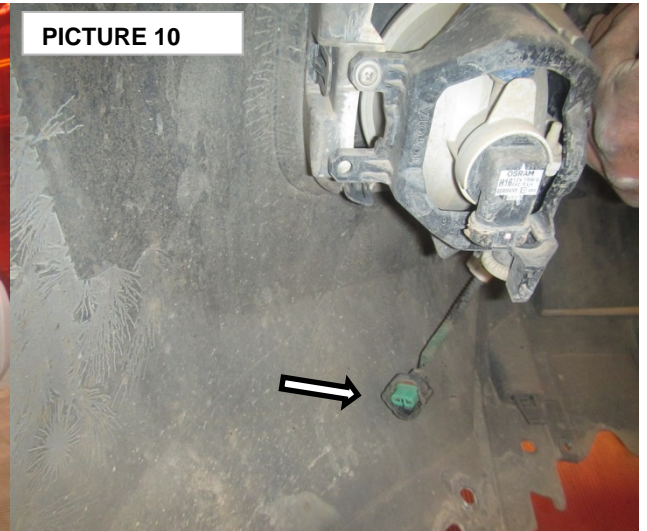
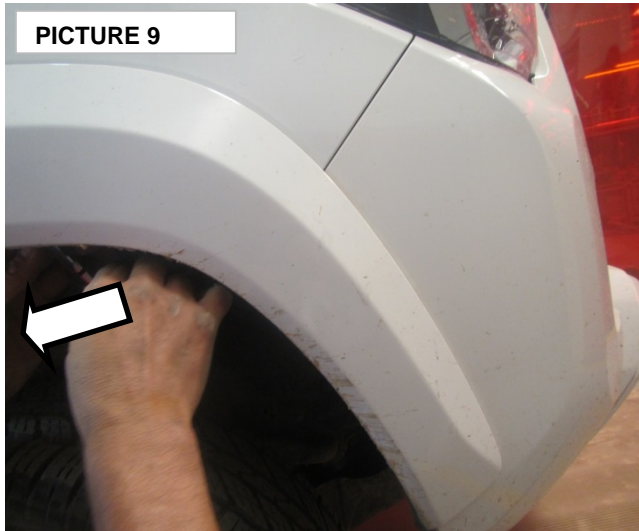
**Step-5** Remove the down lower cover screw & all bottom deflector screws. (PICTURE 8)



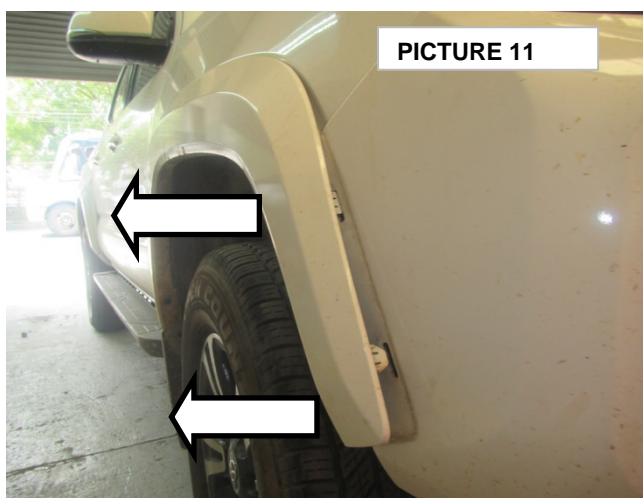
# GO RHINO®

## INSTALLATION INSTRUCTIONS

**Step-6** Remove the lower covers from the passenger and driver sides. (PICTURE 10) If equipped with front park assist and/or fog lamps, disconnect the sensor and/or lamps wiring pig tail from the vehicle wiring harness. (PICTURE 10)



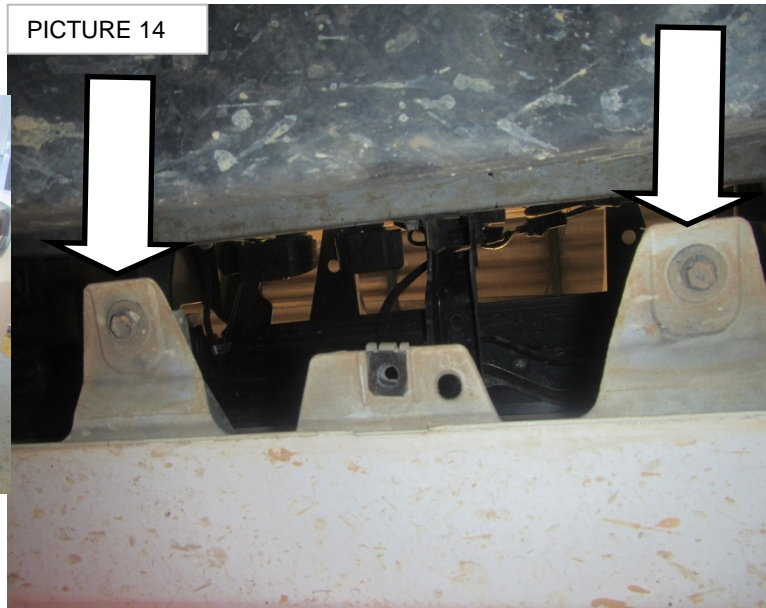
**Step-7** Release enough of the plastic clips holding your fender flare on to be able to pull it back and out of your way. You may remove this flare completely if you desire, but it is not necessary. (PICTURES 11 &12)



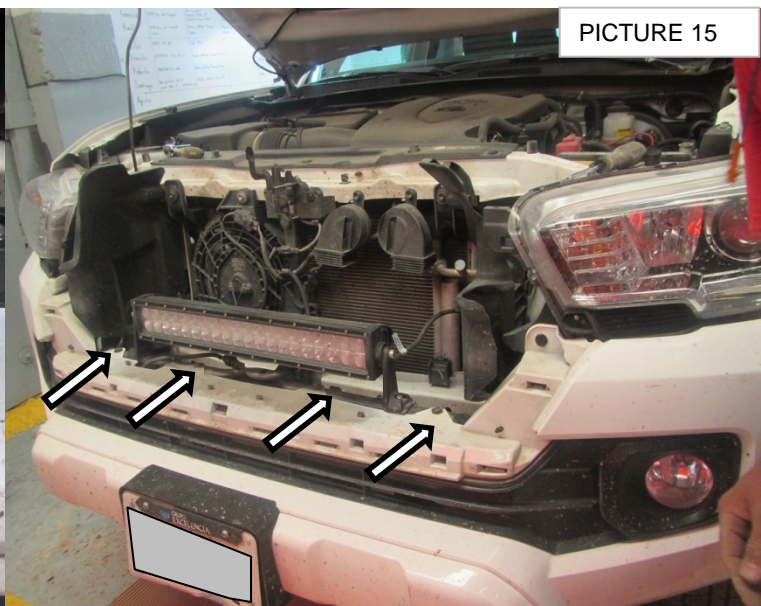
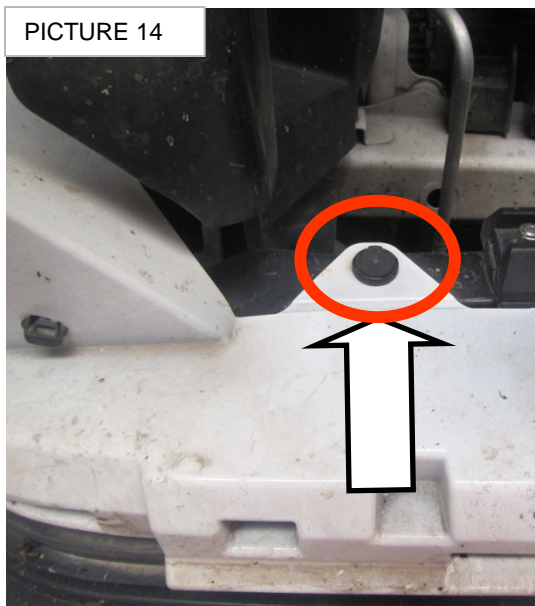
# GORRHINO®

## INSTALLATION INSTRUCTIONS

**Step-8** Remove four front bumper lower screw. (PICTURES 13 & 14)



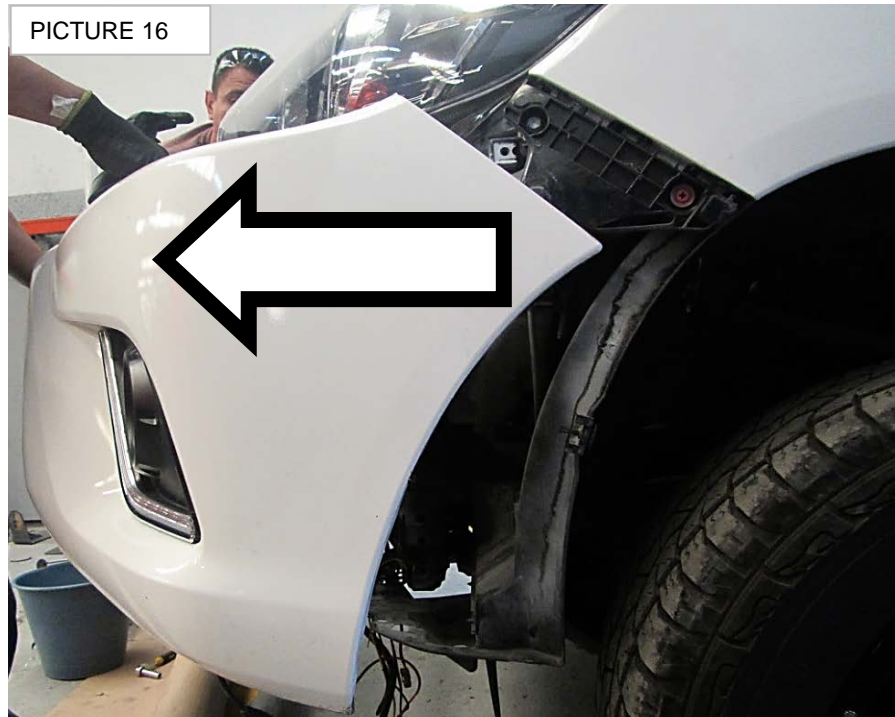
**Step-9** Remove four securing clip from bumper as indicate. (PICTURES 14 & 15)



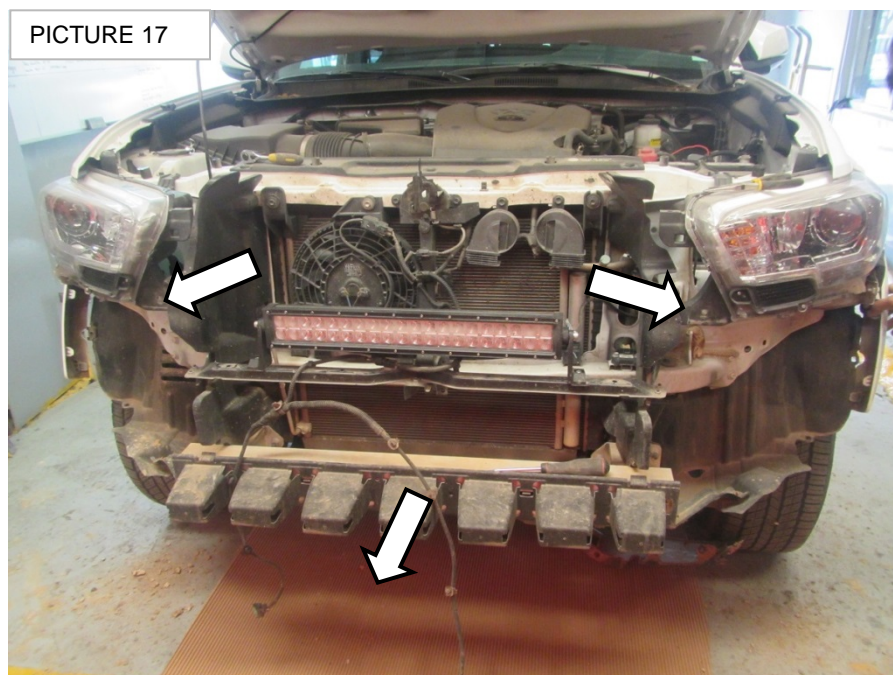
# GO RHINO®

## INSTALLATION INSTRUCTIONS

**Step-9** With assistance remove the bumper from the vehicle as indicate. (PICTURES 16)



**Step-10** Pull out the sides & lower plastic cover toward out to the vehicle. This parts don't used again. (PICTURES 17)

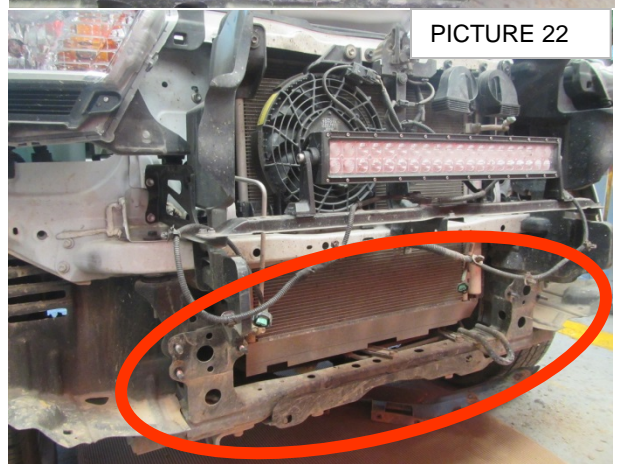
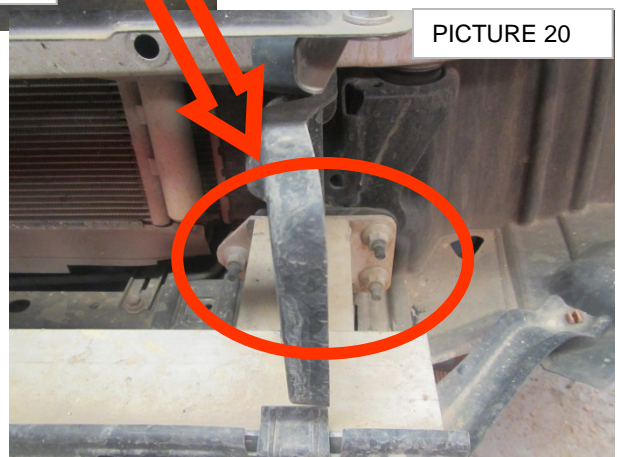
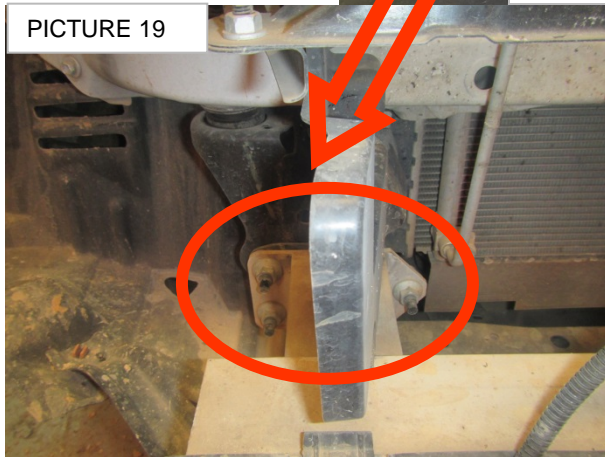
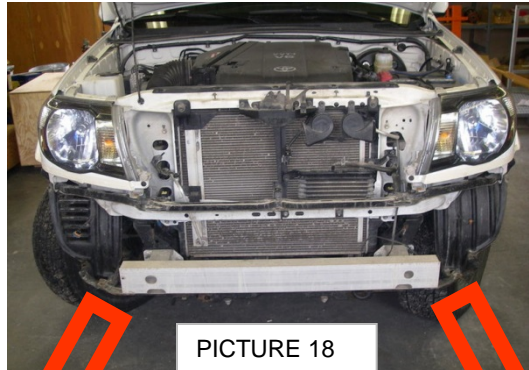




# GORRHINO®

## INSTALLATION INSTRUCTIONS

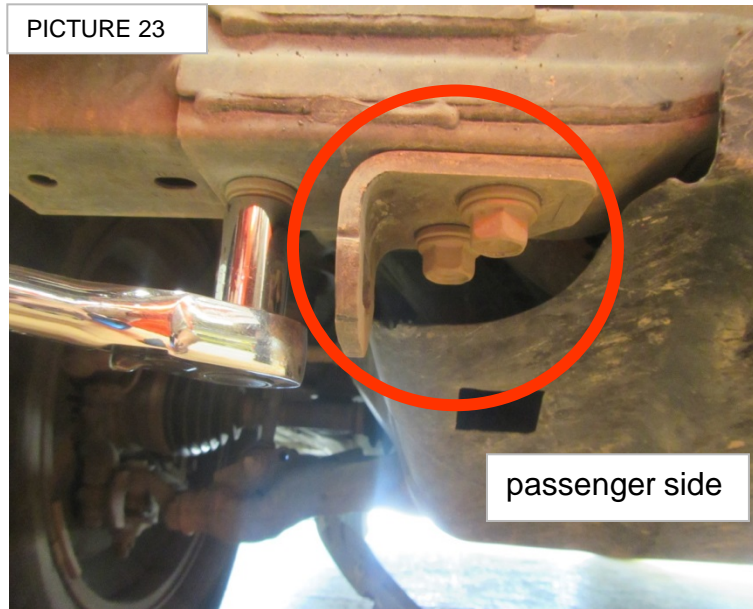
**Step-11** Remove the six nuts of aluminium Bumper Reinforcement, and pull out the Bumper Reinforcement (PICTURES 18, 19, 20, 21 & 22)



# GORRHINO®

## INSTALLATION INSTRUCTIONS

**Step-12** Remove the main frame extension of driver & passenger side. In passenger side remove pull tow hook. (PICTURE 23)



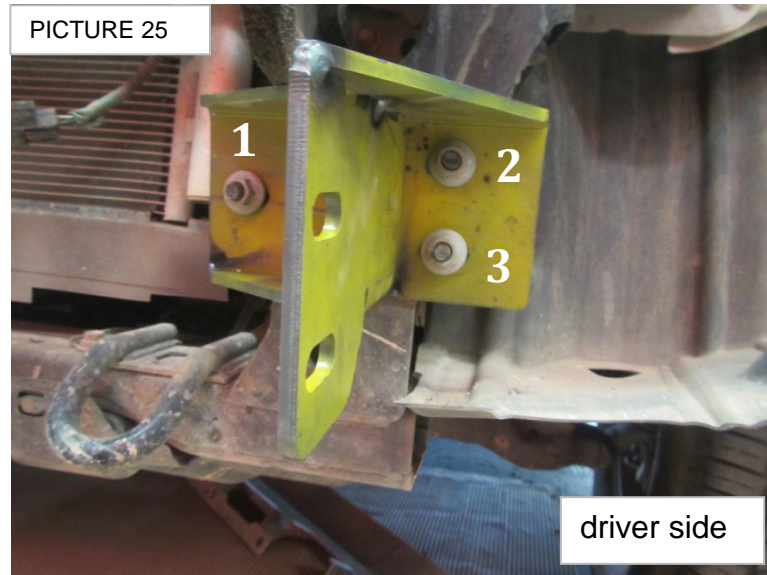
**Step-13** Remove screws of driver & passenger side front bumper holder . (PICTURE 24)



# GORRHINO®

## INSTALLATION INSTRUCTIONS

**Step-14** Install main brackets set as show, using the six nuts of aluminium Bumper Reinforcement (PICTURE 25)



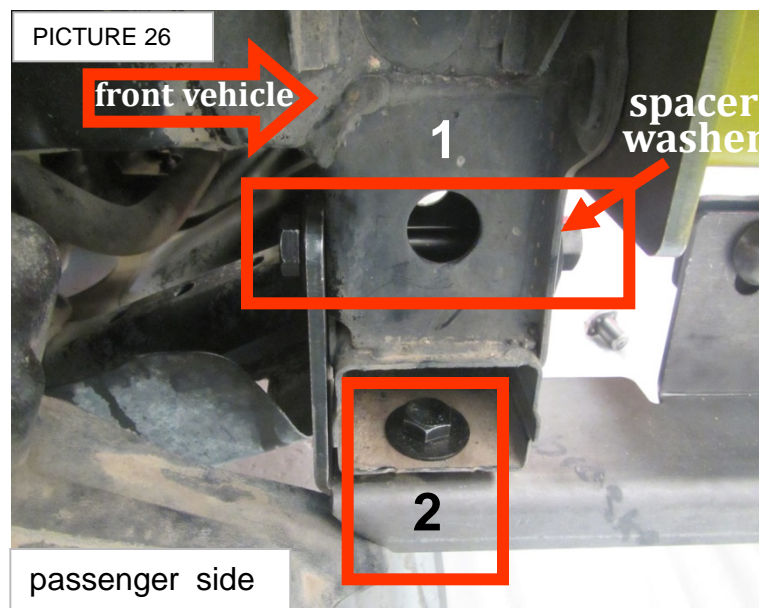
**Step-15** Install auxiliar lower bracket set as:

1.- Use 1/2 X 4 1/2" hex head bolt (2), 1/2" flat washer (2), spacer washer (2), lock washer (2) & 1/2" hex nut (2). Note: **The spacer washer is installed in front side.**

2.- Use 1/2 X 1 1/2" hex head bolt (2), 1/2" flat washer (4), lock washer (2) & 1/2" hex nut (2).

Note: **Not tight the nuts & bolts.**

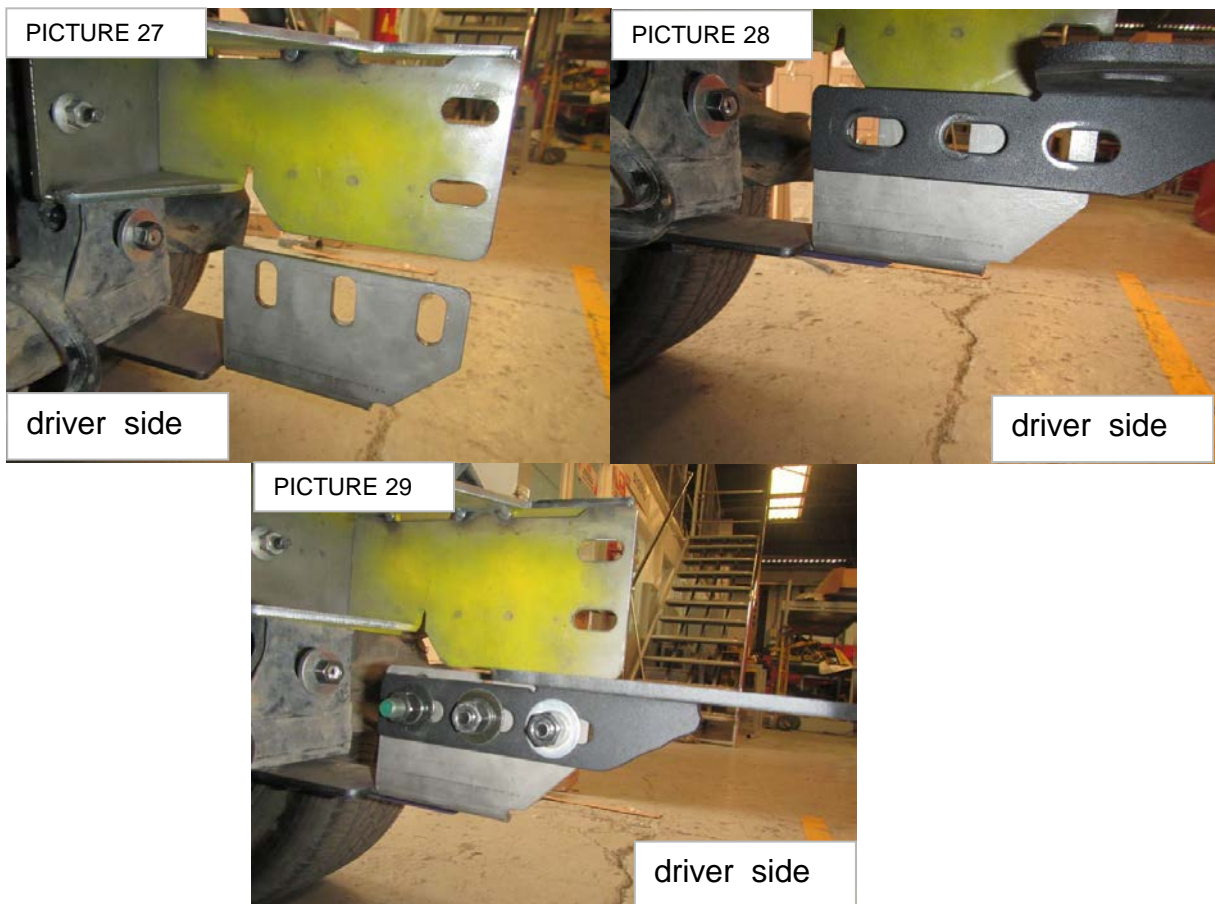
(PICTURE 26)



# GORRHINO®

## INSTALLATION INSTRUCTIONS

**Step-16** On auxiliar lower bracket , Install winch tray brackets set as show , use 1/2" x 1 1/2" hex head bolt (6), flat washer (12) & 1/2" hex nut (6). **not tight the nuts & bolts.**  
(PICTURE 27, 28 & 29 - repeat in passenger side)



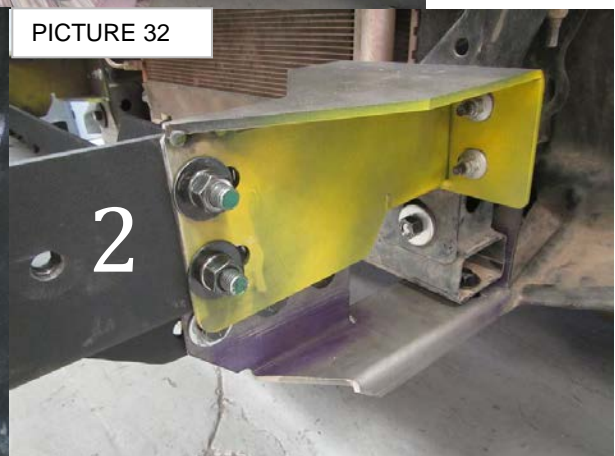
# GORRHINO®

## INSTALLATION INSTRUCTIONS

**Step-17** Position the mounting plate / Winch tray on top of winch tray brackets:

- 1.- Use 1/2" x 1 1/2" carriage bolt, (6), flat washer (6), lock washers (6) & 1/2" hex nut (6).
- 2.- Use 1/2" x 1 1/2" hex head bolt (4), flat washer (8), lock washers (4) & 1/2" hex nut (4).

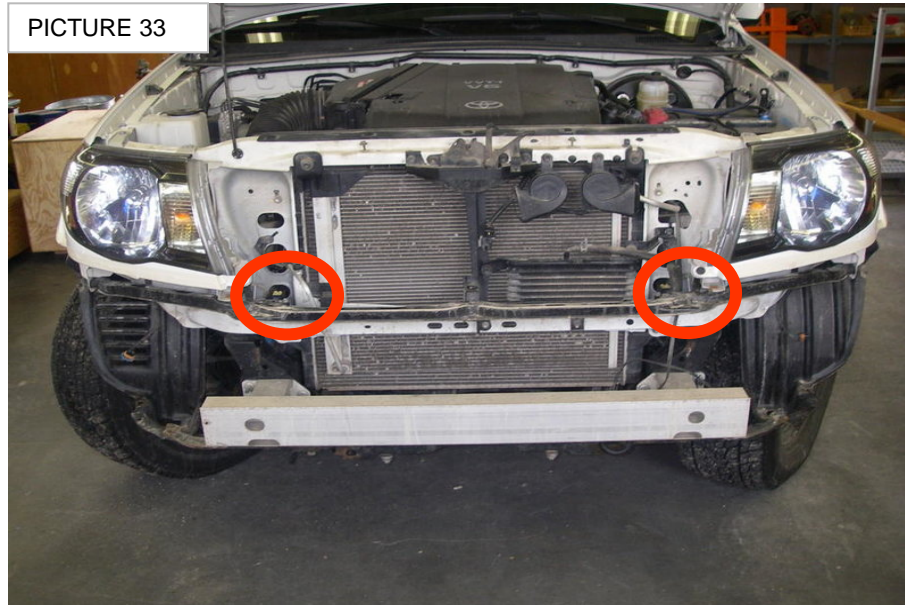
Note: **not tight the nuts & bolts.** (PICTURE 30, 31 & 32)



# GO RHINO®

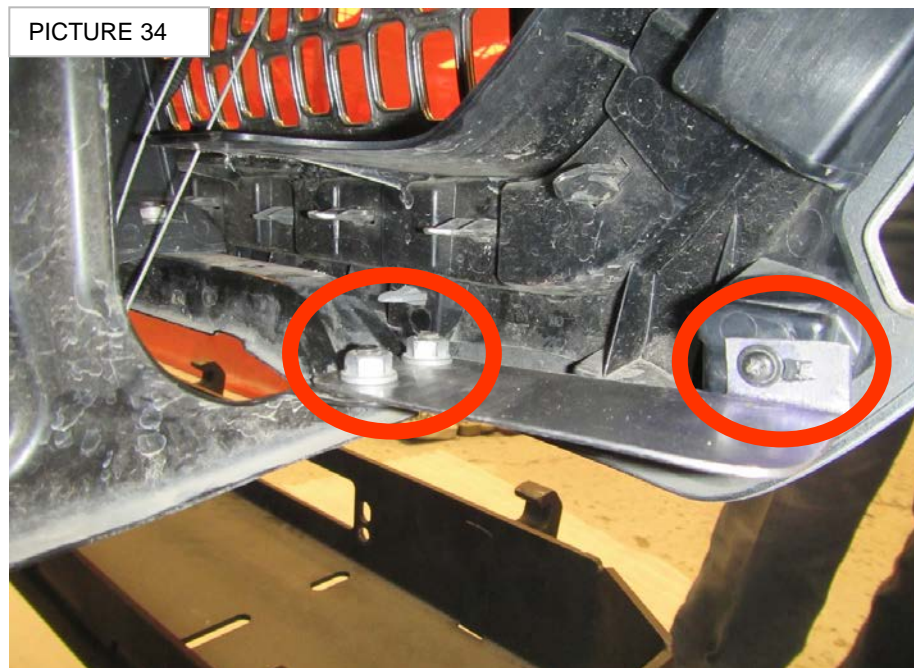
## INSTALLATION INSTRUCTIONS

**Step-18** Before reinstall the front grill, remove 4 nuts (10mm), 2 in each side of front frame. (PICTURE 33 )



**Step-19** Remove 2 k lath screws on lower back of front grill, put the bracket grill and install the k lath screws from hardware kit (**don't tight**), re install the front grill, re install the 4 (10mm)nut. (PICTURE 34 )

Note: **tight the 10mm nuts at 10 lb-ft; k lath screw at 3 lb-ft.**



# GO RHINO®

## INSTALLATION INSTRUCTIONS

**Step-20** Cut thru the lower covers approximate 3" from the upper end ( PICTURE 35 & 36). Reattach the rest of the lower cover in they original position .



**Step-21** Follow the shape of dashboard, cut the side fender. ( PICTURE 37 & 38). Reinstall the cut fenders on position with the clips.



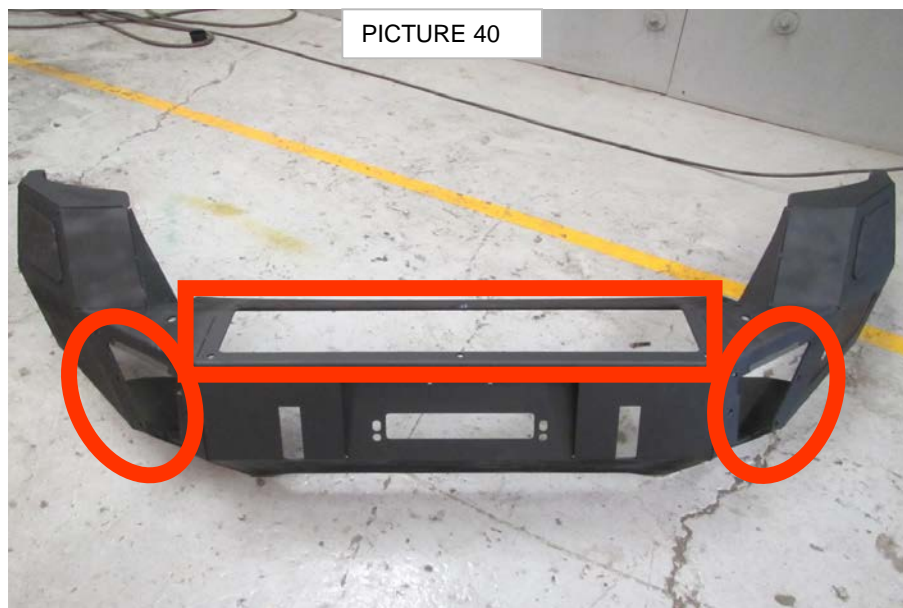
# GORRHINO<sup>®</sup>

## INSTALLATION INSTRUCTIONS

**Step-22** Remove 14mm Body support nut (2). (PICTURE 39)



**Step-23** Remove the 1/4" button head allen screw of the central and side mesh covers. Be careful with plastic flat washers. (PICTURE 40)





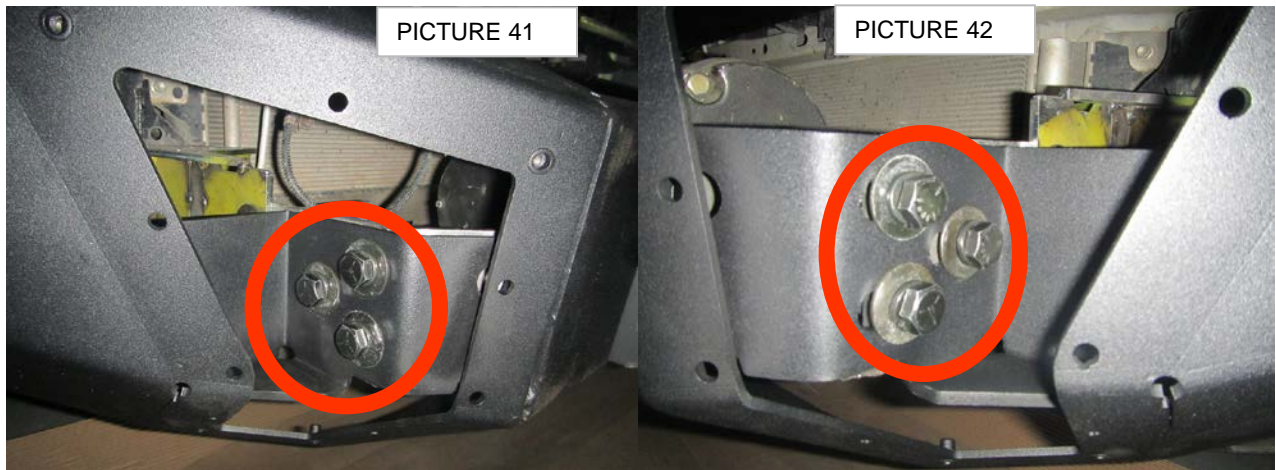
# GO RHINO®

## INSTALLATION INSTRUCTIONS

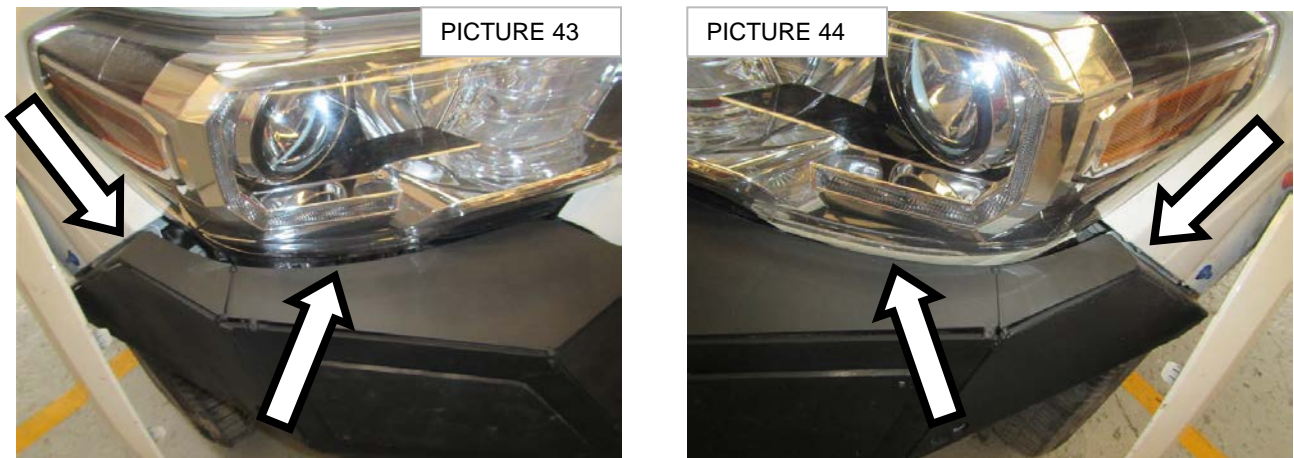
**Step-24** With assistance, aligned the bumper main brackets with the winch tray, and use:

1.- Use 1/2" x 1 1/2" hex bolt, (6), flat washer (6), & lock washers (6).

Note: **not tight the nuts & bolts.** (PICTURE 41 & 42)



**Step-25** Line up the bumper with the shape of dashboard & headlamps (**Be carefully with headlamps**) and (PICTURE 43 & 44)



# GO RHINO<sup>®</sup>

## INSTALLATION INSTRUCTIONS

**Step-26** Install the side auxiliary bracket from bumper to body support screw. (PICTURE 45)

Use 1/2" x 1 1/2" hex head bolt (4), flat washer (8), lock washers (4) & 1/2" hex nut (4) on bumper side, and 3/8" flat washer & 3/8" hex nut(2) removed on step22 for chassis side.

Tight the main brackets 3/8" hex nuts at 40 lb-ft

Tight all the 1/2" hex head bolts & 1/2"nuts at **64 lb-ft.**



**Step-27** Install the winch cover and driver and passenger side front vent covers to the bumper shell using 1/4 x 3/4" button head bolts & plastic flat washers, removed to install bumper. ( Step 21)

Tight bolts, at **15 lb-ft.** (PICTURE 46)



# GORRHINO®

## INSTALLATION INSTRUCTIONS

**Step-28** If installing a winch, install the roller fairlead to the bumper shell at this time. Refer to the winch manufacturer's instructions for installation. If installing an optional light bar, install the light bar to the bumper replacement at this time. Refer to the light bar instructions for installation.

**Step-29** If your state law requires a front license plate, attach the license plate bracket to the holes in the face of the bumper shell, using the supplied 3/8" bolt, washer and nuts, and the license plate to the ( 2 ) obround holes in the license plate bracket using the supplied 1/4" bolts and nuts. ( PICTURE 47).

