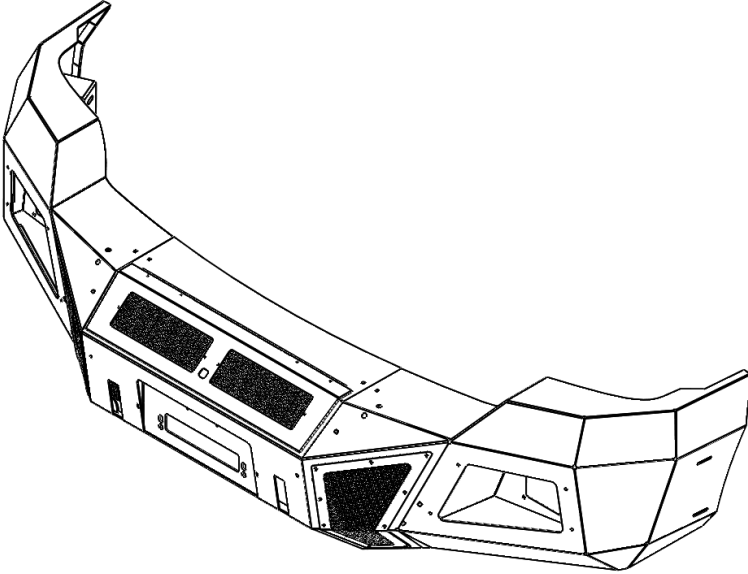


# GO RHINO®

## INSTALLATION INSTRUCTIONS



### PART NO.

- 24376T

### PRODUCT DESCRIPTION:

- BR11 FRONT BUMPER REPLACEMENT

### APPLICATION:

- FORD SUPER DUTY F-250, F-350 2/4WD

### PRODUCT SAFETY & LEGAL DISCLAIMER

- **IMPORTANT READ ALL INSTRUCTIONS CAREFULLY BEFORE INSTALLING, FAILURE TO DO SO MAY CAUSE PERSONAL INJURY OR DAMAGE TO PRODUCT AND/OR PROPERTY.**
- **Review the product package and contents prior to beginning the installation.** Take care when opening the packaging and removing items. If a return is needed you will want to return the product in its original packaging if possible.
- This instruction guide is provided as a GENERAL installation guide, some vehicles vary dimensionally and may require additional steps.
- Test fit the product on the vehicle prior to any third party modifications and or finishing. The manufacturer and/or distributors do not accept responsibility for third party charges, labor and or third part replacement modifications. Some modifications may void the factory warranty.
- Exercise due-diligence when installing this product. The manufacturer and distributors of this product do not accept any responsibility for vehicle damage or personal injury resulting from the installation of this product. Careless installation and operation can result in serious injury or equipment damage.
- This product is for general off-road use. All liability for installation and use rests with the owner/operator.
- **INSTALLER:** Once installation is complete, please return this guide along with other documentation included in this product back to the consumer for future reference. The manufacturer/distributors of this product do not guarantee this particular version will be available at a later date.



## INSTALLATION INSTRUCTIONS

### INJURY HAZARD

Please complete a shop and tool inspection prior to beginning the installation.

- Always make sure you have a clean, dry and well lit work area.
- Always remove jewelry, loose fitting clothing and wear protective gloves and eye protection.
- Always use extreme caution when jacking or raising a vehicle for work. Set the emergency brake and use tire/wheel blocks and jack stands. Refer to the vehicle manufacturer hand book. Utilize the vehicle manufacturers designated lifting points.
- Always use appropriate and adequate care in lifting parts during disassembly and installation. Seek help in lifting heavy or large items into place. Utilize jacks and or lifting devices when available.
- Always insure products are secure during disassembly and installation.
- Always wear eye protection and take steps to protect any exposed skin during the installations. Drilling, cutting and grinding plastic and metal may create flying particles that can cause injury.
- Always use extreme caution when drilling, cutting and or grinding on a vehicle. Thoroughly inspect the area to be drilled, on both sides of material, prior to modification and relocate any objects that may become damaged.
- Always assemble and tighten all fasteners per the installation instructions.
- Always route electrical cables carefully. Avoid moving parts, parts that may become hot and rough or sharp edges.
- Always insulate and protect all exposed wiring and electrical connections.

### MAINTENANCE AND CARE

- Always perform regular inspections and maintenance on mounts and related fasteners.
- Periodically check and tighten all fasteners.
- Stripped, fractured, or bent fasteners must be replaced.
- After washing the vehicle make sure to fully dry all surfaces.
- In areas with cold temperatures make sure to wash the product often to remove harmful materials used on road ways.
- Never use abrasive cleaners or polish compounds. Clean with a gentle soap and water. If you use wax use a non-abrasive automotive wax such as pure carnauba wax.

### WARNING

Some products have been designed to work together with factory rear sensor systems, factory forward facing sensor systems and factory air bags.

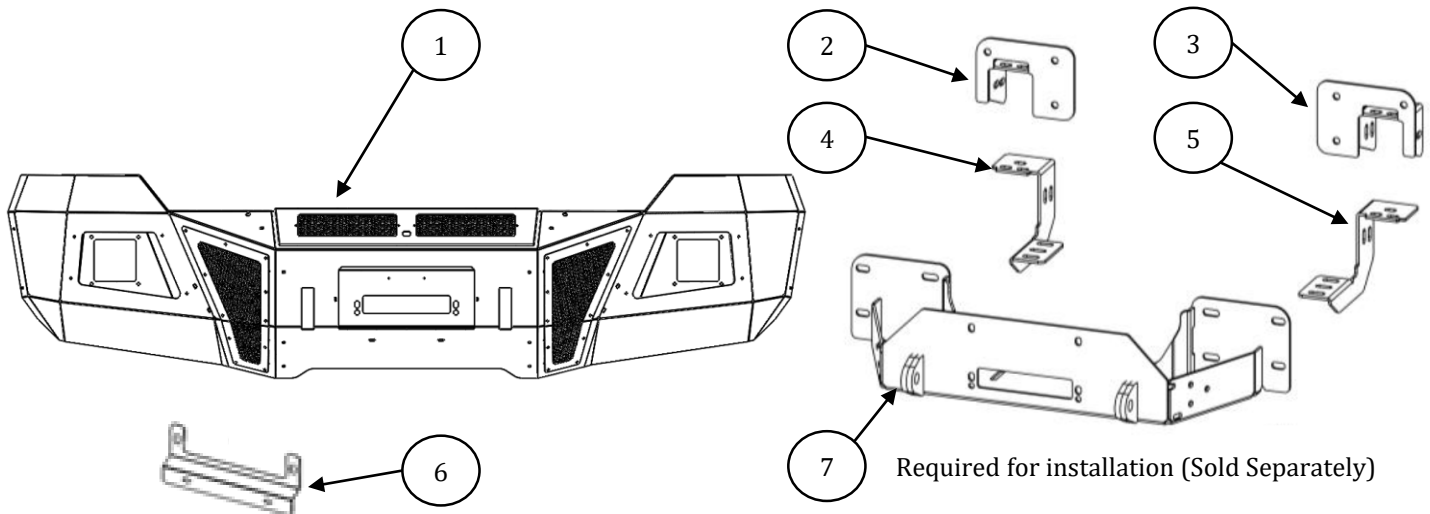
- Installation of some of these products may alter the factory sensor system performance.
- Factory sensors may read shackles or hooks protruding from the fairlead and or tow hooks.
- All sensor testing is completed by Go Rhino Products and or third party testing labs on modified vehicles.
- Sensor sensitivity, factory sensor housing, orientation, and operating conditions are all variables that will influence functionality of the sensors.
- Installation of some product may effect the factory air bag systems.
- Some products allow the use of third party products such as winches, shackles, hooks, etc. Follow the respective manufacturers operating instructions for use with our products.
- Make sure to fully understand the product, it's intended use and operation prior to use.
- Above all... be safe!

# GO RHINO®

## INSTALLATION INSTRUCTIONS

### PARTS INCLUDED IN THIS LIST:

ITEM	QTY.	DESCRIPTION	ITEM	QTY.	DESCRIPTION	ITEM	QTY.	DESCRIPTION
1	1	BR11 Bumper Replacement Shell	9	6	½ x 1 ½" Carriage head bolt	17	6	3/8 x 1 1/4" Hex head bolt
2	1	Passenger Frame Bracket	10	6	7/16 x 1 ½" Hex head bolt	18	6	3/8" Hex nut
3	1	Driver Frame Bracket	11	12	7/16" Flat washer	19	12	3/8" Flat washer
4	1	Passenger Auxiliary Bracket	12	6	7/16" Lock washer	20	6	3/8" Lock washer
5	1	Driver Auxiliary Bracket	13	6	7/16" Hex nut	21	6	1/4" Flat washer
6	1	License Plate Bracket	14	34	1/2" Flat washer	22	34	1/4" Lock hex nut
7	1	Mounting Plate/Winch Tray	15	26	1/2" Lock washer		1	KTE-G143402G4
8	20	½ x 1 ½" Hex head bolt	16	20	1/2" Hex nut	23	20	¼ x 3/4" Sems bolt



Go Rhino recommends you, the installer, read this installation instruction manual from front to back before installing the product.

### TOOLS NEEDED FOR INSTALLATION:

- 13mm, 15mm, 18mm, 7/16", 9/16" & 3/4" Sockets
- 13mm, 15mm, 18mm, 7/16", 9/16" & 3/4" Wrenches
- T10 & T15 TORX Driver
- Slotted Blade Screw Driver
- 5/32" Hex Key
- Ratchet, Ratchet Extensions & Swivel Joint Adapter

ESTIMATED TIME FOR INSTALLATION:

2 Hour

# GO RHINO®

## INSTALLATION INSTRUCTIONS

### OEM Bumper Removal

**Step-1** Remove the plastic fasteners and rubber air deflector from the bumper and bottom of the vehicle, (Photo 1).

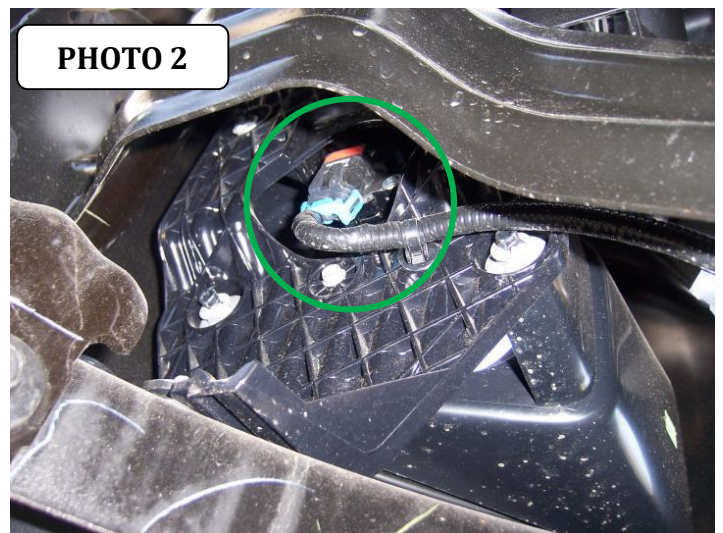
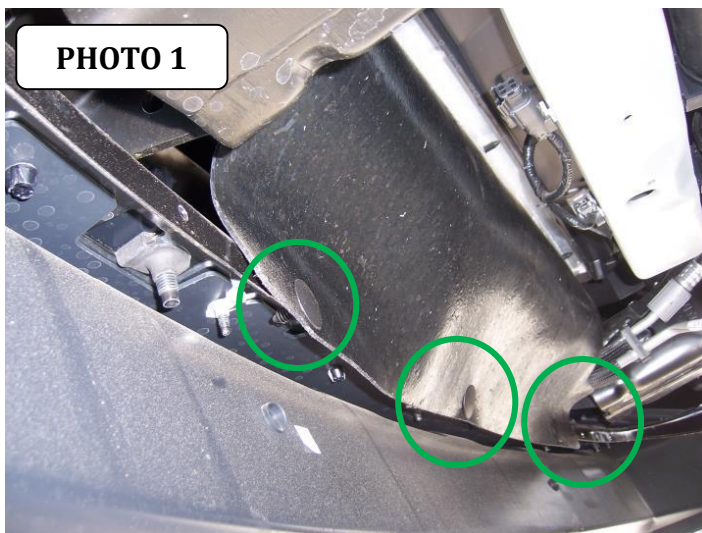
Note: If the vehicle has these options or equipment.

### Fog Lights

Unplug the fog light wiring harness and remove the plastic fastener securing the wiring harness to the bumper, (Photo 2).

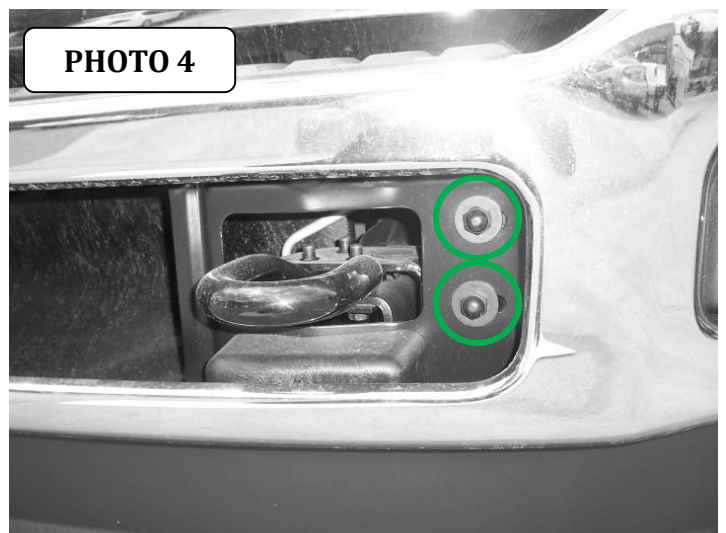
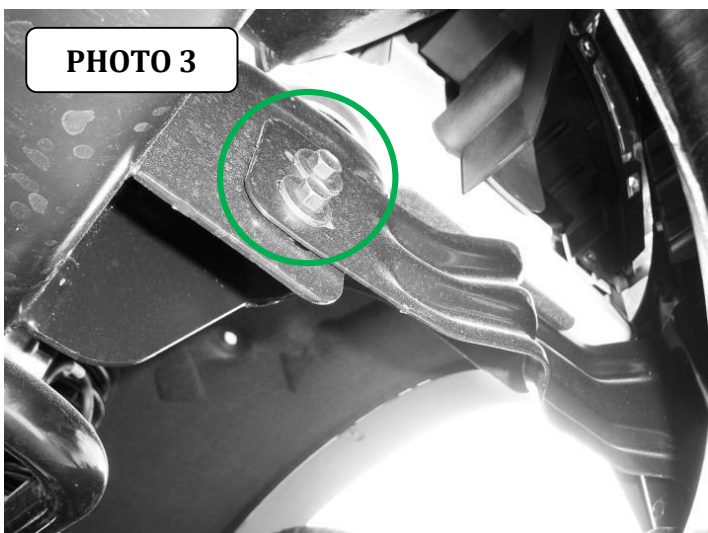
### Engine Block Heater

Remove the plastic fastener securing the power cord to the bumper.



**Step-2** Remove the bolts (2) per side securing the bumper support brackets to the bumper, and loose the bolts (2) per side securing the support bracket to the vehicle frame, (Photo 3).

**Step-3** Remove the bolts (2) per side securing the front of the bumper to the bumper brackets, (Photo 4). Remove the bumper from the vehicle and set it aside.

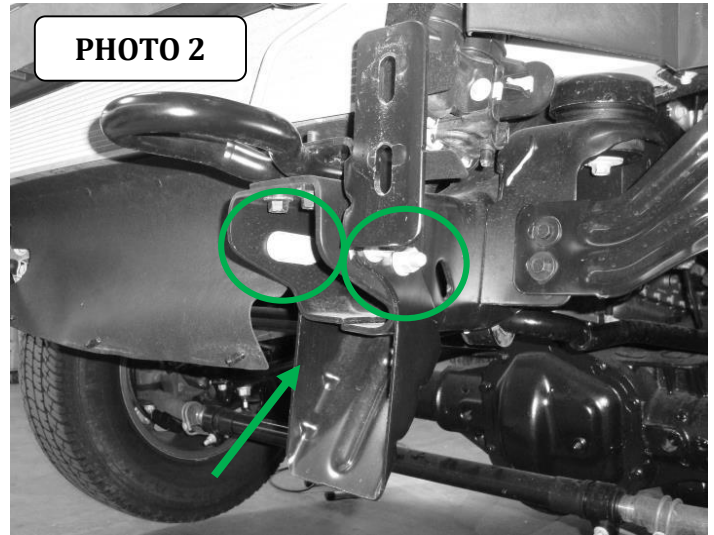
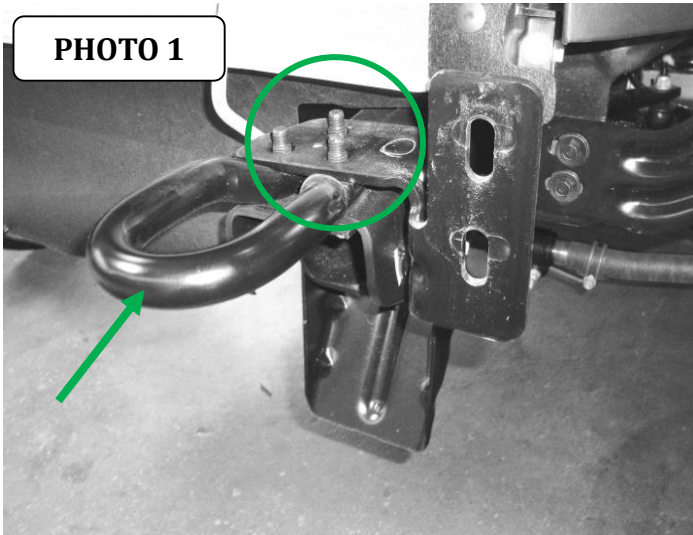


# GO RHINO®

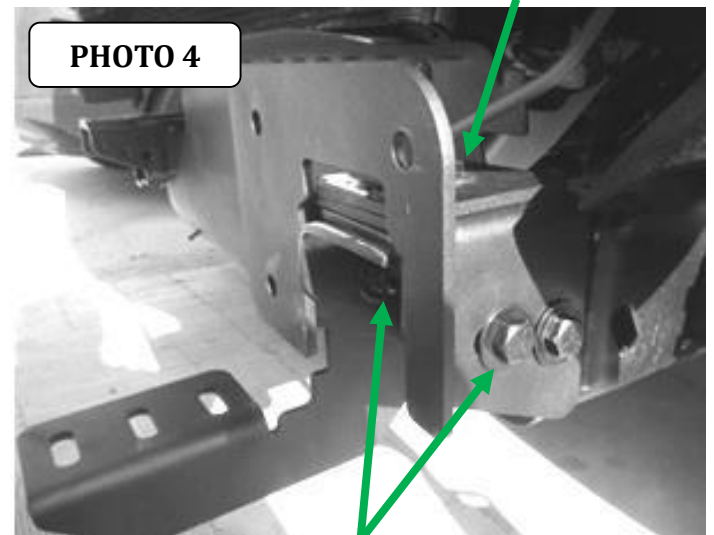
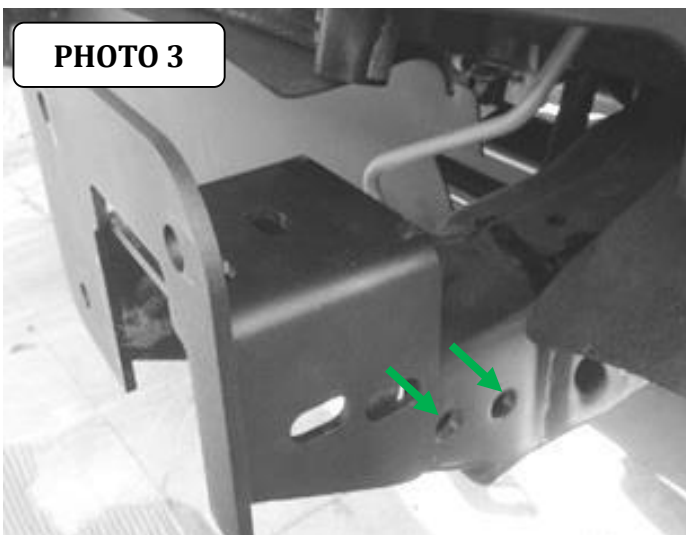
## INSTALLATION INSTRUCTIONS

### BR 10 Bumper Replacement Installation

**Step-1** Remove the bolts (3) per side securing the tow hooks and bumper bracket assembly to the frame, (Photo 1). If equipped remove the nuts and bolt plates securing the under rider guards to the frame, (Photo 2).



**Step-2** Install the driver's side frame bracket by positioning the bracket over the top and sides of the frame. Position the driver side auxiliary bracket on top of the frame bracket align the holes and secure the auxiliary bracket and frame bracket to the top of the frame using (3) 7/16" x 2" hex bolts (6) 7/16" flat washers, (3) 7/16" lock washers and (3) 7/16" hex nuts. Secure the frame bracket and auxiliary bracket to the sides of the frame using (4) 1/2" x 1 1/2" hex bolts, (8) 1/2" flat washers, (4) 1/2" lock washers and (4) 1/2" hex nuts, (Photo 3 & 4). Leave the nuts and bolts loose for final adjustment. Repeat this step to install the passenger side brackets.



7/16" hex bolts, washers & hex nuts

1/2" hex bolts, washers & hex nuts

# GORRHINO<sup>®</sup>

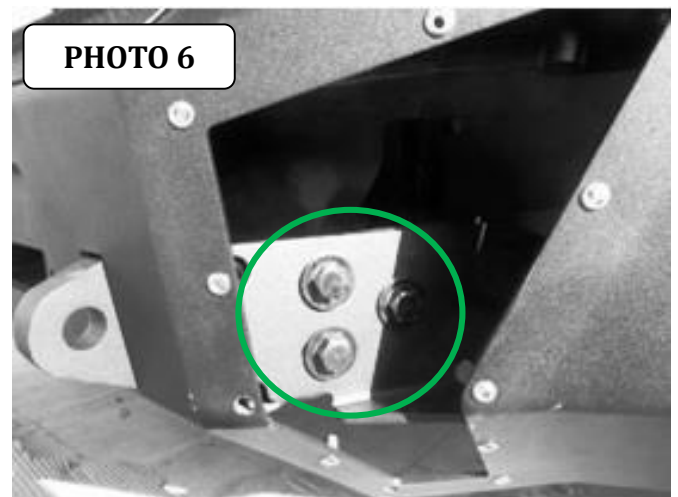
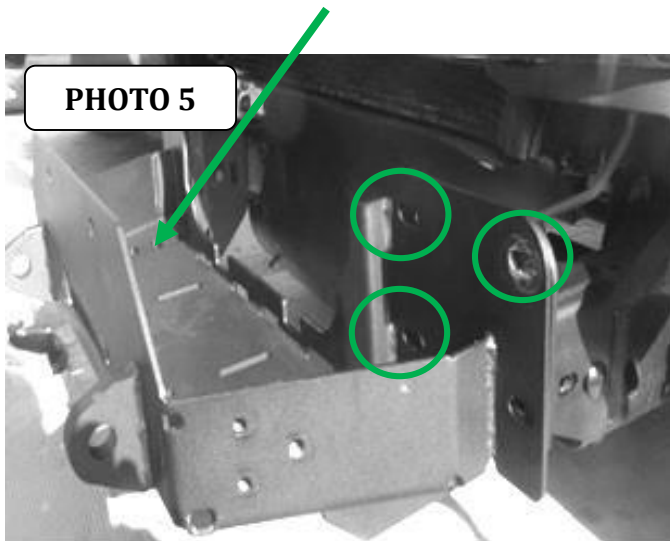
## INSTALLATION INSTRUCTIONS

**Step-3** Position the winch tray on top of the auxiliary brackets. Secure the winch tray to each frame bracket using (3) ½" x 1 ½" hex bolts, (3) ½" flat washers, (3) ½" lock washers and (3) ½" hex nuts, and to the auxiliary bracket using (3) ½" x 1 ½" carriage bolts, (3) ½" flat washers, (3) ½" lock washers and (3) ½" hex nuts, (Photo 5).

Adjust and position the winch tray mounting flanges approximately ¼" off center from the frame bracket flanges toward the driver side of the vehicle and tighten all factory and supplied nuts and bolts.

**Step-4** With assistance lift the bumper shell up to the vehicle, align the holes in the bumper shell brackets with the weld nuts on the winch tray and secure the bumper shell brackets to each side of the winch tray using (3) ½" x 1 1/2" hex bolts, (3) ½" lock washers and (3) ½" flat washers, (Photo 6). Leave the bolts loose for final adjustment.

### 1/2" carriage bolts, washers & hex nuts



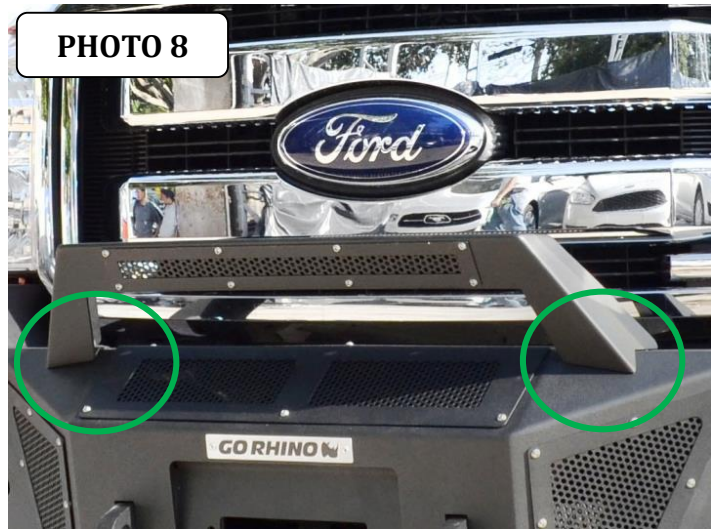
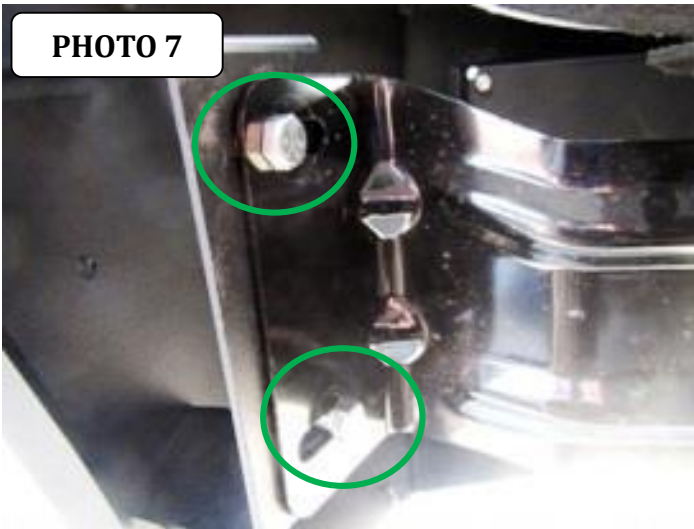
**Step-5** Align the holes and attach each of the factory bumper support brackets to the bumper shell support brackets using (2) 3/8" x 1 1/4" hex bolts, (2) 3/8" flat washers, (2) 3/8" lock washers and (2) 3/8" hex nuts, (Photo 7).

**Step-6** With assistance, adjust and hold the bumper shell visual alignment, then tighten the support bracket factory and supplied nuts and bolts then all remaining nuts and bolts.

**Step-6** If installing a winch, install the roller fairlead to the bumper shell at this time. Refer to the winch manufacturer's instructions for installation. If installing an optional light bar, install the light bar to the bumper shell at this time. Refer to the light bar instructions for installation.

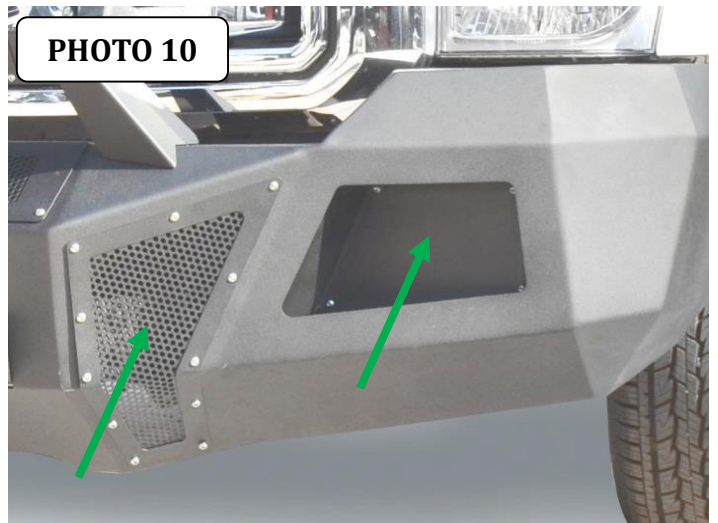
# GORRHINO<sup>®</sup>

## INSTALLATION INSTRUCTIONS



**Step-8** Install the winch cover and driver and passenger side front vent covers to the bumper shell using the supplied  $\frac{1}{4}$ " x  $\frac{3}{4}$ " button head bolts, (Photo 9 & 10). **Note:** Do not over tighten bolts, reference tightening torque (71 in. lbs.).

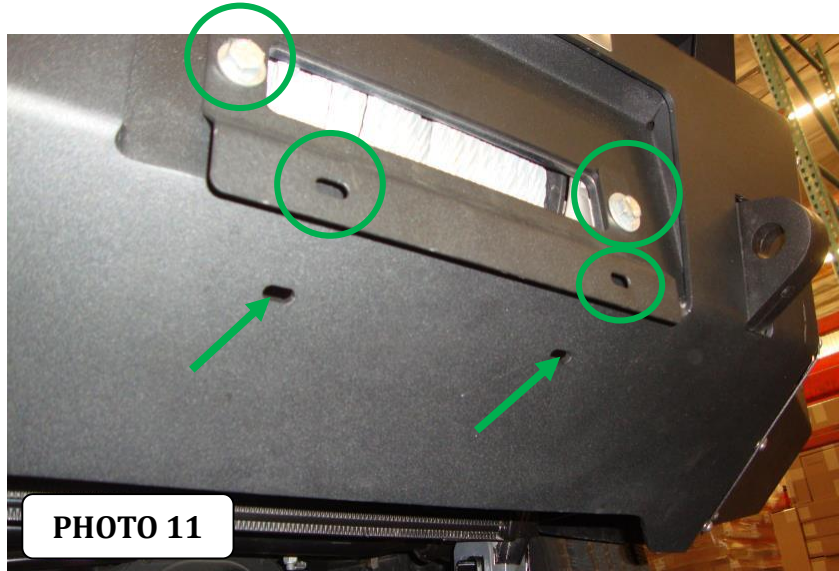
**Step-9** Install the flush mount light pods to the bumper shell using (4)  $\frac{1}{4}$ " x  $\frac{3}{4}$ " button head bolts and (4)  $\frac{1}{4}$ " nylon lock nuts, (Photo 10).



If your state law requires a front license plate, attach the license plate bracket to the holes in the face of the bumper shell, using the supplied  $\frac{3}{8}$ " bolts, washers and nuts, and the license plate to the (2) obround holes in the license plate bracket using the supplied  $\frac{1}{4}$ " bolts and nuts. (Photo 11).

# GORRHINO®

## INSTALLATION INSTRUCTIONS



If installing a winch, attach the license plate directly to the (2) obround holes in the lower face of the bumper shell using the supplied  $\frac{1}{4}$ " bolts and nuts.

Remember to check and retighten all factory and supplied nuts and bolts periodically. nuts, (Photo 11).