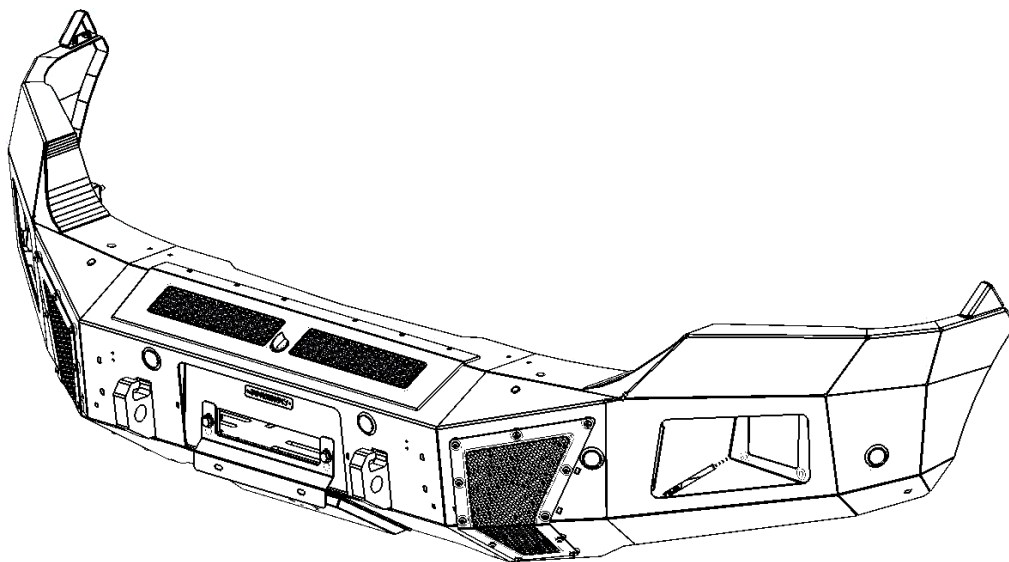


# GO RHINO®

## INSTALLATION INSTRUCTIONS



### PART NO.

- 24131T

### PRODUCT DESCRIPTION:

- BR5.5 BUMPER REPLACEMENT

### APPLICATION:

- RAM 1500

**EXCLUDES:** (Sport, Express, Rebel & TRX Models)

### PRODUCT SAFETY & LEGAL DISCLAIMER

- **IMPORTANT READ ALL INSTRUCTIONS CAREFULLY BEFORE INSTALLING, FAILURE TO DO SO MAY CAUSE PERSONAL INJURY OR DAMAGE TO PRODUCT AND/OR PROPERTY.**
- **Review the product package and contents prior to beginning the installation.** Take care when opening the packaging and removing items. If a return is needed you will want to return the product in its original packaging if possible.
- This instruction guide is provided as a GENERAL installation guide, some vehicles vary dimensionally and may require additional steps.
- Test fit the product on the vehicle prior to any third party modifications and or finishing. The manufacturer and/or distributors do not accept responsibility for third party charges, labor and or third part replacement modifications. Some modifications may void the factory warranty.
- Exercise due-diligence when installing this product. The manufacturer and distributors of this product do not accept any responsibility for vehicle damage or personal injury resulting from the installation of this product. Careless installation and operation can result in serious injury or equipment damage.
- This product is for general off-road use. All liability for installation and use rests with the owner/operator.
- **INSTALLER:** Once installation is complete, please return this guide along with other documentation included in this product back to the consumer for future reference. The manufacturer/distributors of this product do not guarantee this particular version will be available at a later date.



## INSTALLATION INSTRUCTIONS

### INJURY HAZARD

Please complete a shop and tool inspection prior to beginning the installation.

- Always make sure you have a clean, dry and well lit work area.
- Always remove jewelry, loose fitting clothing and wear protective gloves and eye protection.
- Always use extreme caution when jacking or raising a vehicle for work. Set the emergency brake and use tire/wheel blocks and jack stands. Refer to the vehicle manufacturer hand book. Utilize the vehicle manufacturers designated lifting points.
- Always use appropriate and adequate care in lifting parts during disassembly and installation. Seek help in lifting heavy or large items into place. Utilize jacks and or lifting devices when available.
- Always insure products are secure during disassembly and installation.
- Always wear eye protection and take steps to protect any exposed skin during the installations. Drilling, cutting and grinding plastic and metal may create flying particles that can cause injury.
- Always use extreme caution when drilling, cutting and or grinding on a vehicle. Thoroughly inspect the area to be drilled, on both sides of material, prior to modification and relocate any objects that may become damaged.
- Always assemble and tighten all fasteners per the installation instructions.
- Always route electrical cables carefully. Avoid moving parts, parts that may become hot and rough or sharp edges.
- Always insulate and protect all exposed wiring and electrical connections.

### MAINTENANCE AND CARE

- Always perform regular inspections and maintenance on mounts and related fasteners.
- Periodically check and tighten all fasteners.
- Stripped, fractured, or bent fasteners must be replaced.
- After washing the vehicle make sure to fully dry all surfaces.
- In areas with cold temperatures make sure to wash the product often to remove harmful materials used on road ways.
- Never use abrasive cleaners or polish compounds. Clean with a gentle soap and water. If you use wax use a non-abrasive automotive wax such as pure carnauba wax.

### WARNING

Some products have been designed to work together with factory rear sensor systems, factory forward facing sensor systems and factory air bags.

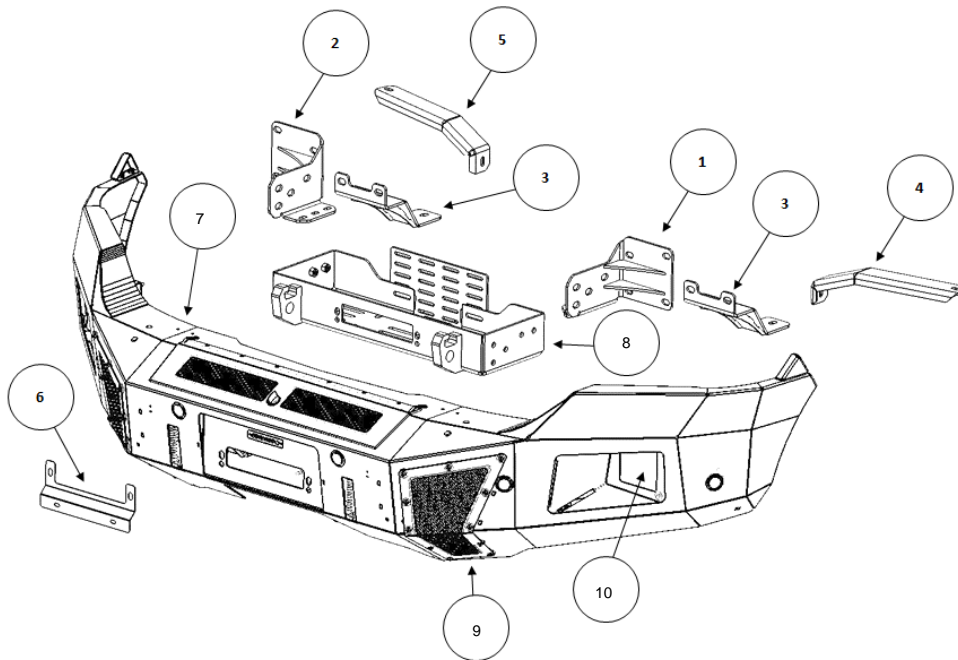
- Installation of some of these products may alter the factory sensor system performance.
- Factory sensors may read shackles or hooks protruding from the fairlead and or tow hooks.
- All sensor testing is completed by Go Rhino Products and or third party testing labs on modified vehicles.
- Sensor sensitivity, factory sensor housing, orientation, and operating conditions are all variables that will influence functionality of the sensors.
- Installation of some product may effect the factory air bag systems.
- Some products allow the use of third party products such as winches, shackles, hooks, etc. Follow the respective manufacturers operating instructions for use with our products.
- Make sure to fully understand the product, it's intended use and operation prior to use.
- Above all... be safe!

# GO RHINO®

## INSTALLATION INSTRUCTIONS

### PARTS INCLUDED IN THIS LIST:

ITEM	QTY.	DESCRIPTION	ITEM	QTY.	DESCRIPTION	ITEM	QTY.	DESCRIPTION
1	1	Frame Bracket (driver)	10	2	Ligh Pod Plates (pre installed)	19	24	1/2" Lock Washer
2	1	Frame Bracket (passenger)	11	4	3/8 x 1 1/4" Hex Bolt	20	14	1/2" Hex Nut
3	1	Auxiliary Bracket (driver & passenger)	12	2	3/8 x 5" Hex Bolt	21	2	M12 x 1.75 x 40mm Hex Bolt
4	1	Support Bracket (driver)	13	12	3/8" Flat Washer	22	4	1/4 x 1" Hex head bolt
5	1	Support Bracket (passenger)	14	6	3/8" Lock Washer	23	4	1/4" Flat Washer
6	1	License Plate Bracket	15	6	3/8" Hex Nut	24	4	1/4" Lock Washer
7	1	Bumper Shell	16	10	1/2 x 1 1/2" Hex Bolt		4	1/4" Hex Nut
8	1	Winch Tray	17	12	1/2 x 1 1/2" Carriage Bolt			
9	2	Vent Covers (pre installed)	18	26	1/2" Flat Washer			



Go Rhino recommends you, the installer, read this installation instruction manual from front to back before installing the product.

### TOOLS NEEDED FOR INSTALLATION:

- 8mm, 10mm, 13mm, 15mm, 18mm, 19mm, 7/16", 9/16" & 3/4" Sockets
- 8mm, 10mm, 15mm, 18mm, 7/16", 9/16" & 3/4" Wrenches
- Slotted Blade Screw Driver
- 5/32" Hex Key
- Ratchet, Ratchet Extensions & Swivel Joint Adapter

ESTIMATED TIME FOR INSTALLATION:

2 Hour

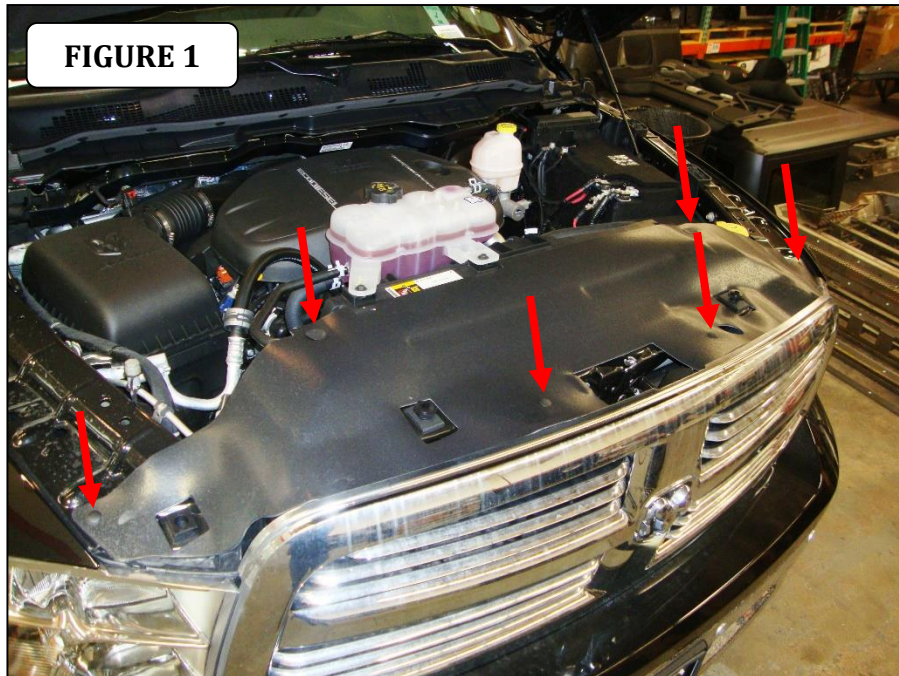
# GO RHINO®

## INSTALLATION INSTRUCTIONS

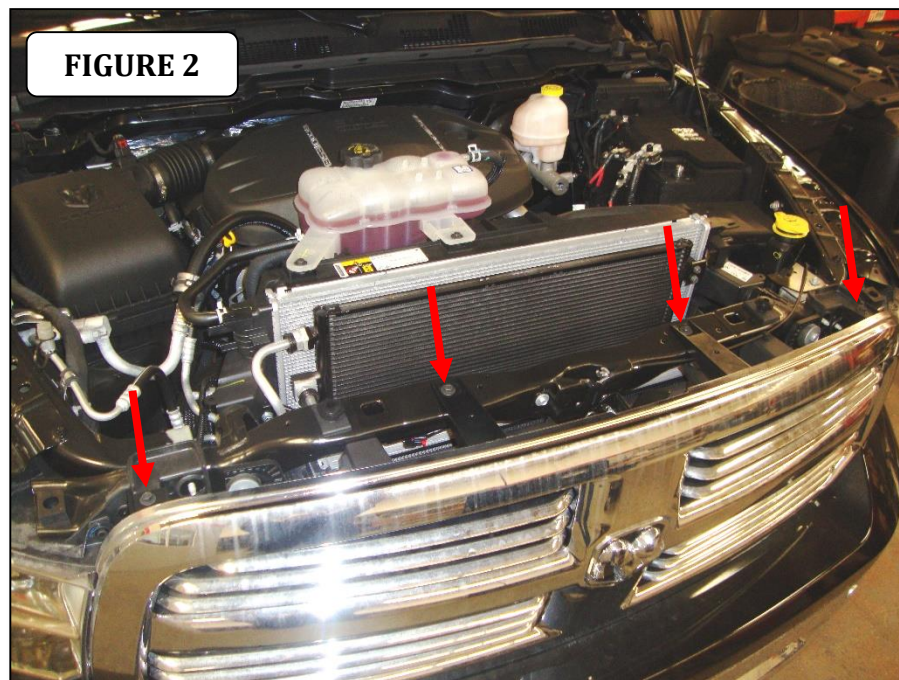
### OEM Bumper Removal

**Step-1** Open the hood and disconnect the vehicle battery or batteries.

**Step-2** Remove the (6) plastic tree clips securing the radiator cover to the radiator support. Using a flat blade screwdriver, pull the head of the tree clip up, remove the tree clips, and lift radiator dust cover off. This will allow access to the bolts securing the top of the grille, (FIGURE 1).



**Step-3** Remove the (4) screws securing the top of the grille to the radiator support, (FIGURE 2). Unsnap the pins located behind the grille on each side midway and bottom, and then remove the grille from the vehicle.

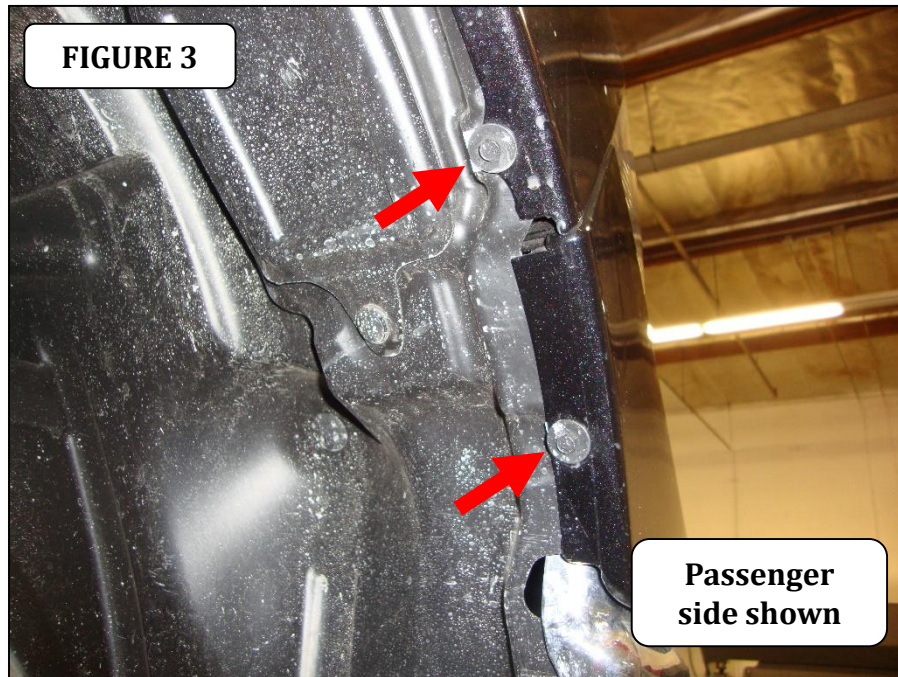




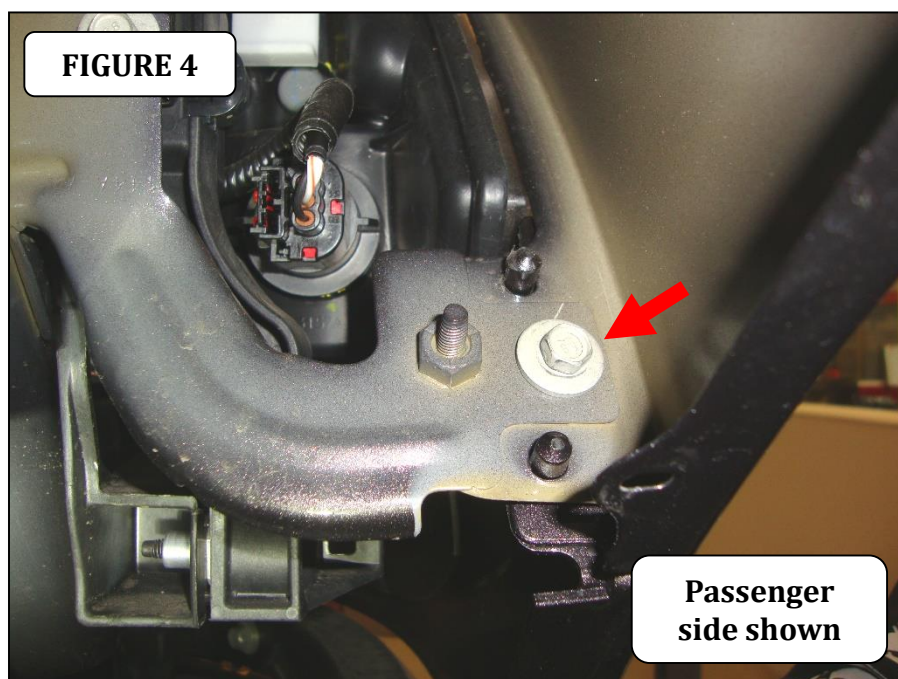
# GO RHINO®

## INSTALLATION INSTRUCTIONS

**Step-4** On each side of the vehicle, remove (2) screws securing the fender liner and bumper valance, (FIGURE 3).



**Step-5** Pull the fender liner back for access and remove the bolt securing the bumper valance to the fender, (FIGURE 4).

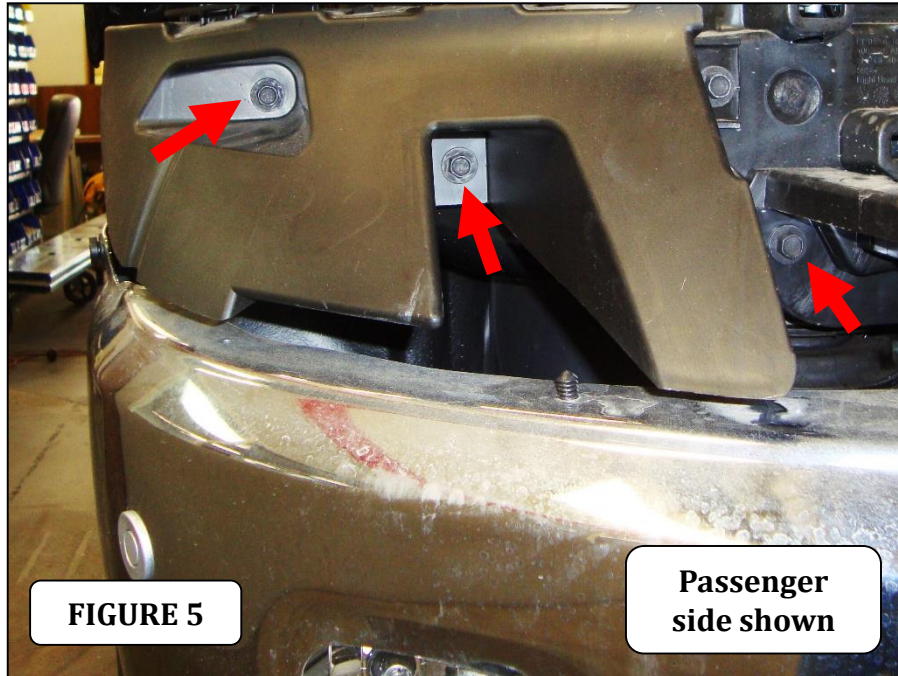


# GO RHINO®

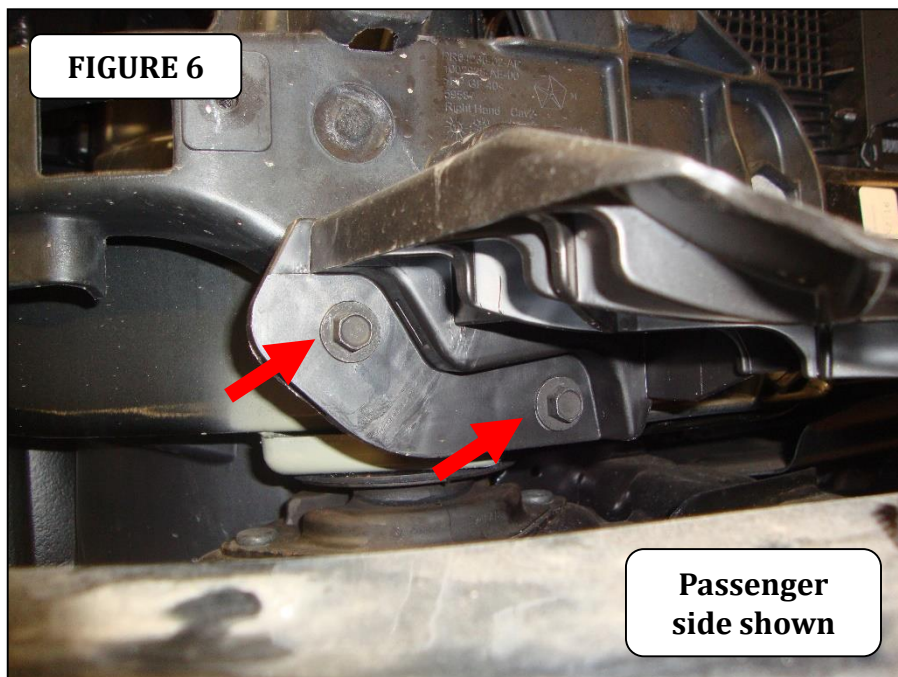
## INSTALLATION INSTRUCTIONS

**Step-6** Working from side to side pull outward on the valance to unsnap the clips and remove the valance from the vehicle.

**Step-7** On each side of the vehicle, remove (3) screws securing bumper valance corner support bracket, (FIGURE 5). Remove the valance corner support bracket from the vehicle.



**Step-8** On each side of the vehicle, remove (2) bolts securing the bumper valance center support bracket, (FIGURE 6). Remove the valance center support bracket from the vehicle.



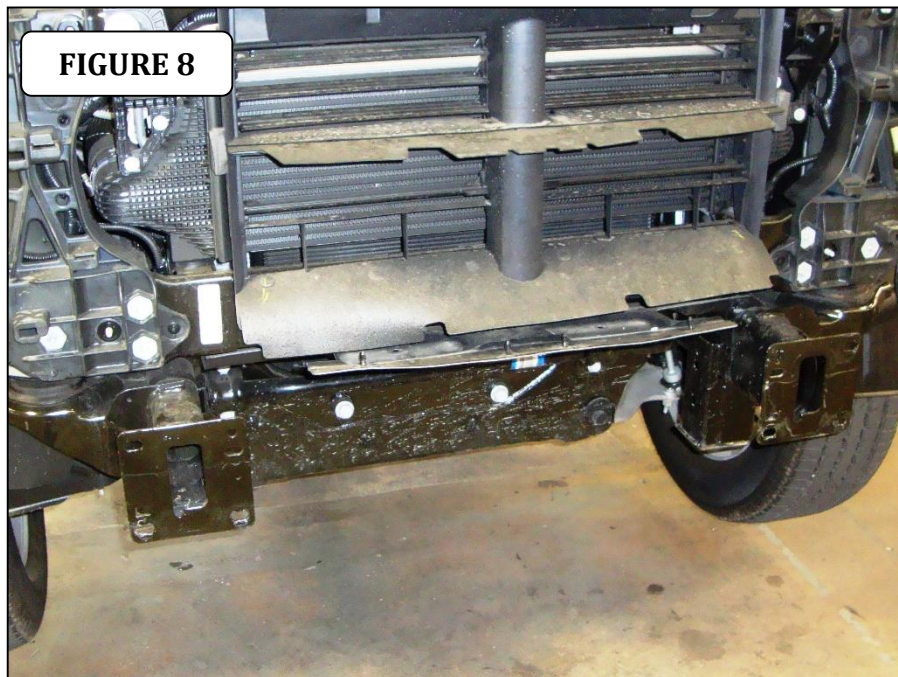
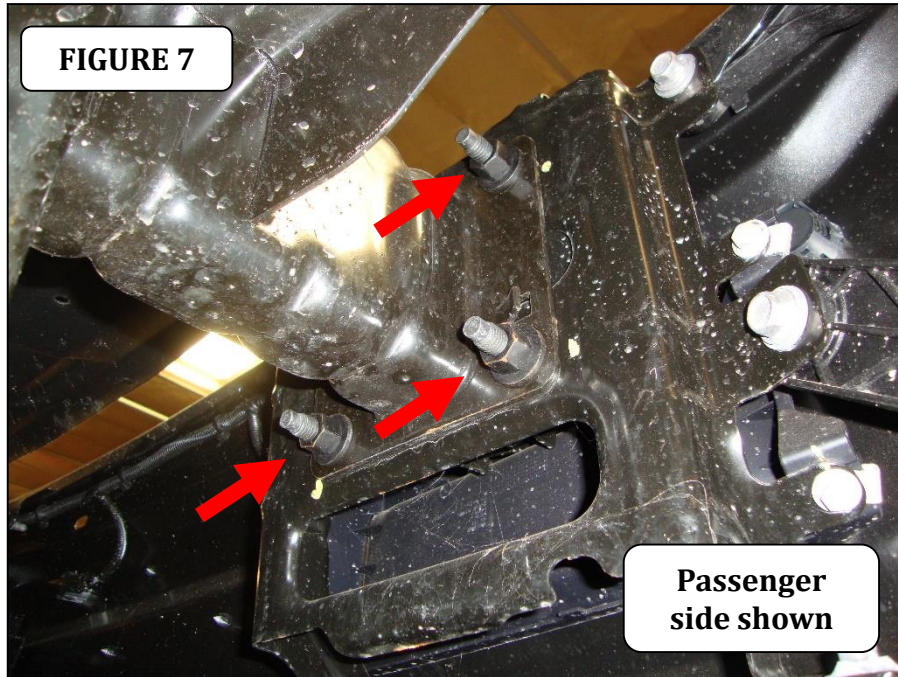


# GO RHINO®

## INSTALLATION INSTRUCTIONS

**Step-9** If equipped, disconnect the fog light and Part Assist bumper wiring harnesses from the vehicle wiring harnesses.

**Step-10** Support the factory bumper, and on each side of the vehicle, remove the (3) nuts securing the bumper connector bracket to the flange on the end of the frame rail, (FIGURE 7). With assistance, remove the bumper from the vehicle, (FIGURE 8).



**Step-11** Reinstall the factory grille and radiator dust cover.



# GO RHINO<sup>®</sup>

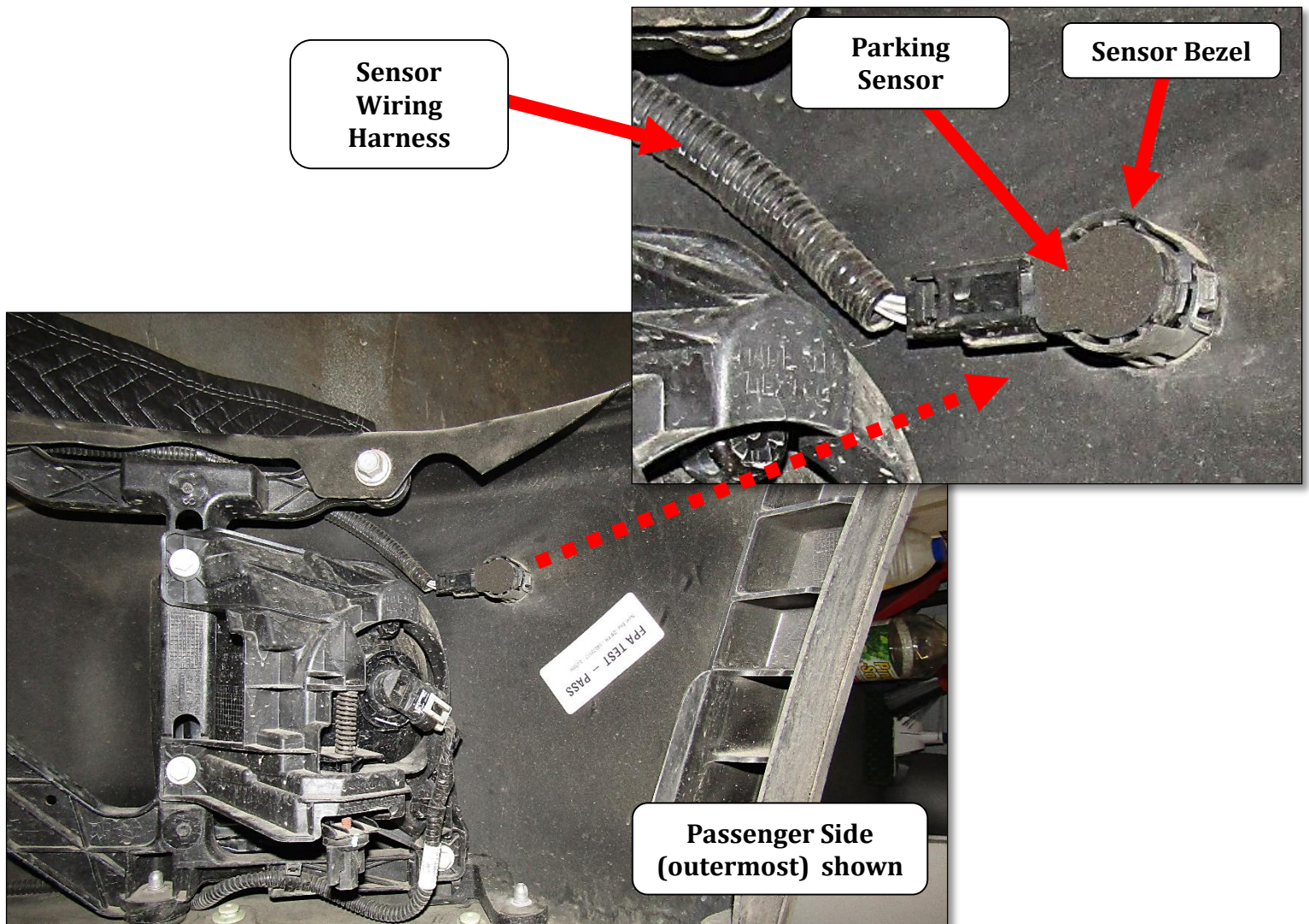
## INSTALLATION INSTRUCTIONS

If your vehicle is not equipped with front Park Assist, move ahead to page 10 of the BR5.5 Bumper Installation instructions. If your vehicle is equipped with front Park Assist, continue with the following steps. **Note:** The Par Assist sensors and sensor bezels have to be installed in the BR5.5 bumper replacement in the same position as removed from the OEM bumper.

**Step-1** Disconnect the parking sensors from the OEM bumper wiring harness and remove the wiring harness from the OEM bumper.

**Step-2** Remove each parking sensor from the plastic bezel by gently spreading the bezel tabs and pulling out on the back of the sensor. Note: Do not push on the front of the sensor as this may damage it.

**Step 3** Remove the parking sensor bezels from the OEM bumper by depressing the tabs around the base and pushing the bezel out through the front of the bumper.





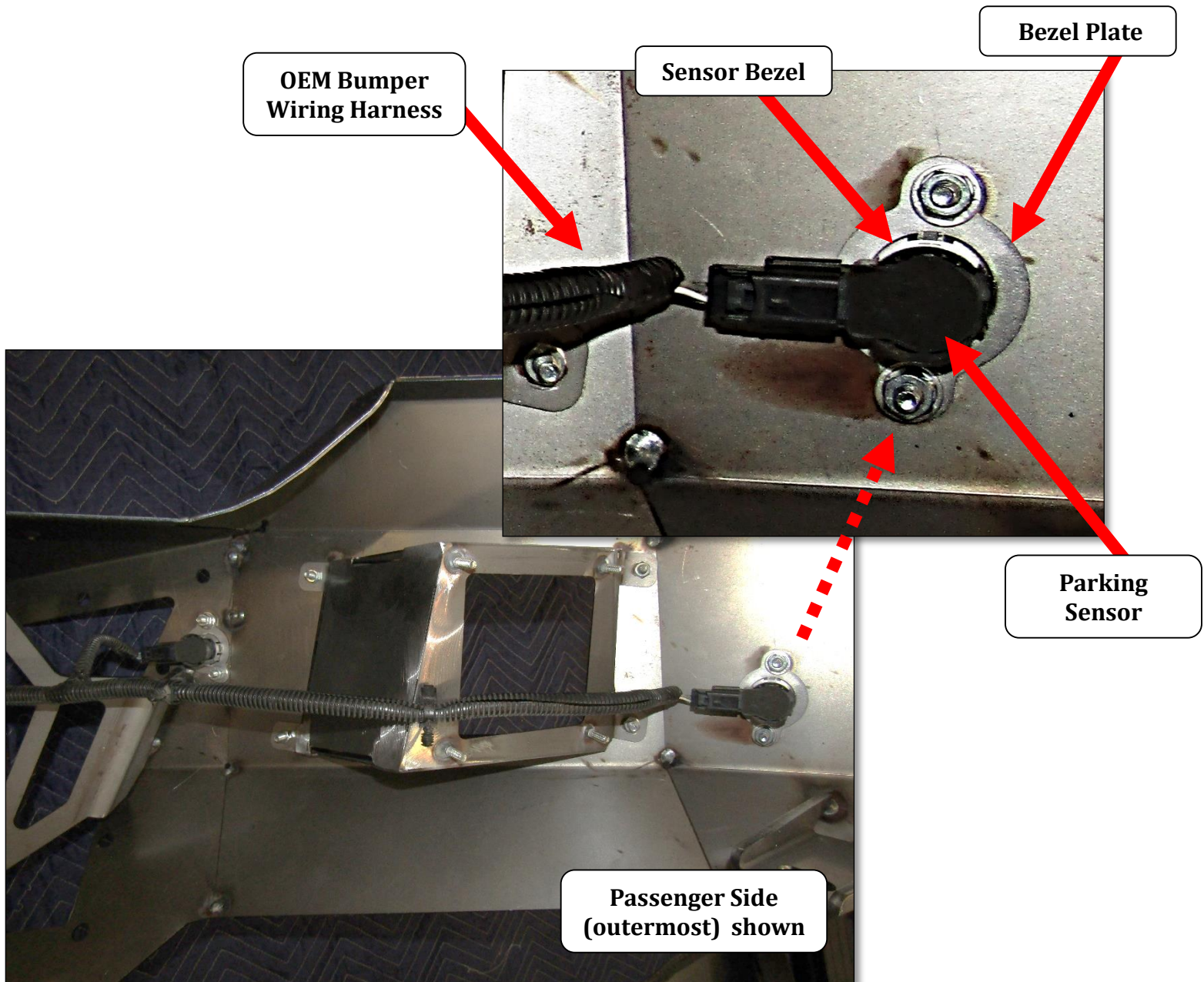
# GORRHINO<sup>®</sup>

## INSTALLATION INSTRUCTIONS

**Step-4** Remove the (6) plastic plugs from the sensor bezel plates that are pre installed in the BR5.5 bumper replacement.

**Step-5** Aline the protrusions on each sensor bezel with the profile in the matching bezel plate, then from the front of the BR5.5 bumper push the bezel through the profile in the plate until the tabs around the base lock in position. **Note:** The Park Assist sensors and bezels have to be installed in the BR5.5 bumper replacement in the same position as removed from the OEM bumper.

**Step-6** Install the parking sensors in the sensor bezels and transfer the OEM bumper wiring harness to the BR5.5 bumper replacement and re-connect to the parking sensors.

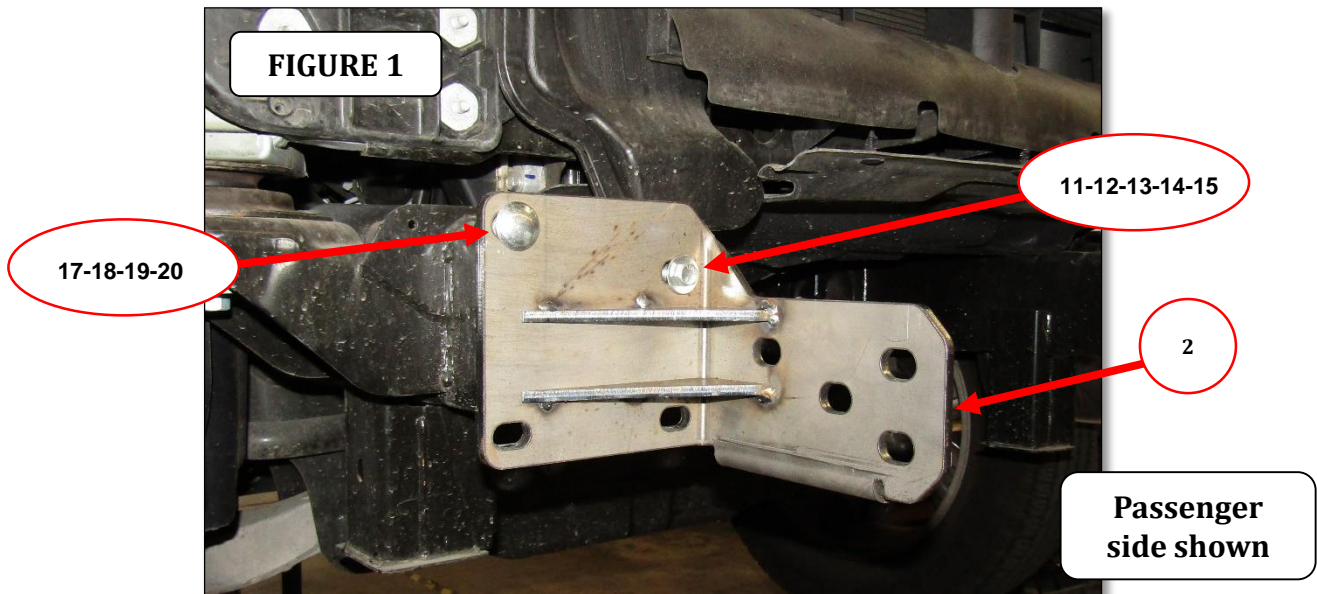


# GO RHINO®

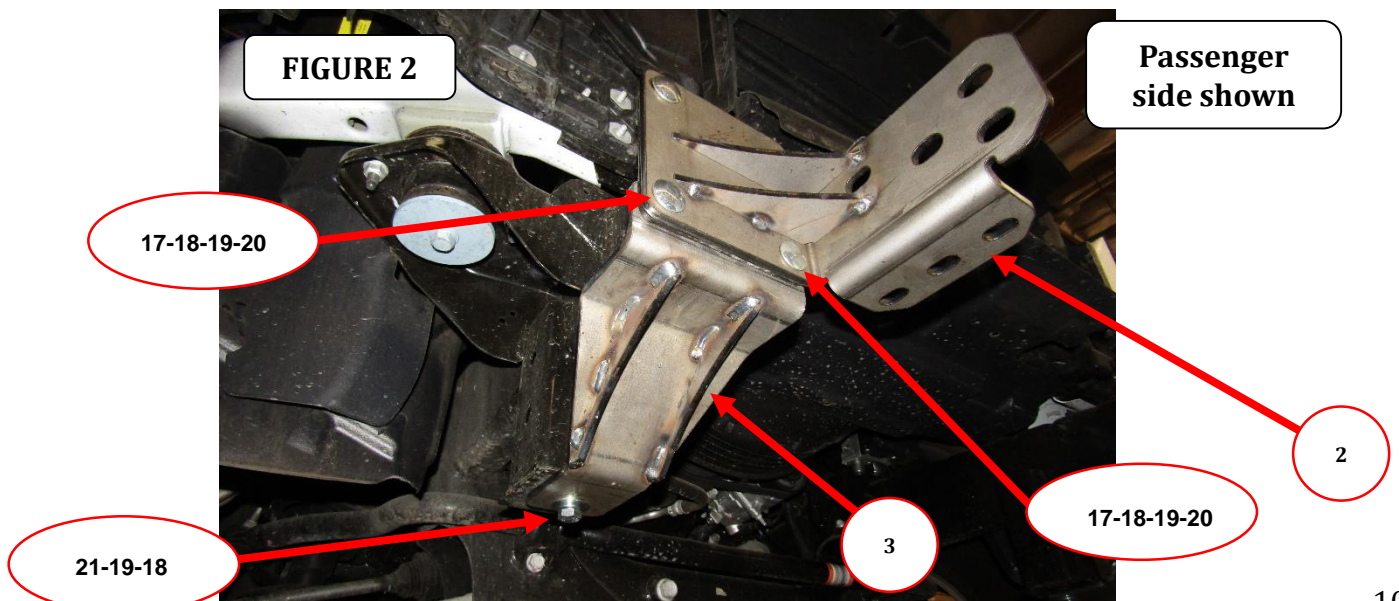
## INSTALLATION INSTRUCTIONS

### BR5.5 Bumper Installation

**Step-1** Position the passenger side frame bracket up to flange on the end of the frame, align the (2) holes in the top of the frame bracket with the holes in the flange and secure the frame bracket to the outer side of the flange using (1) ½" x 1 ½" carriage bolt, (1) ½" flat washer, (1) ½" lock washer and (1) ½" hex nut, and to the inner side using (1) 3/8" x 1 1/4" hex bolt, (2) 3/8" flat washers, (1) 3/8" lock washer and (1) 3/8" hex nut, (FIGURE 1). Leave the nuts and bolts loose for final adjustment.



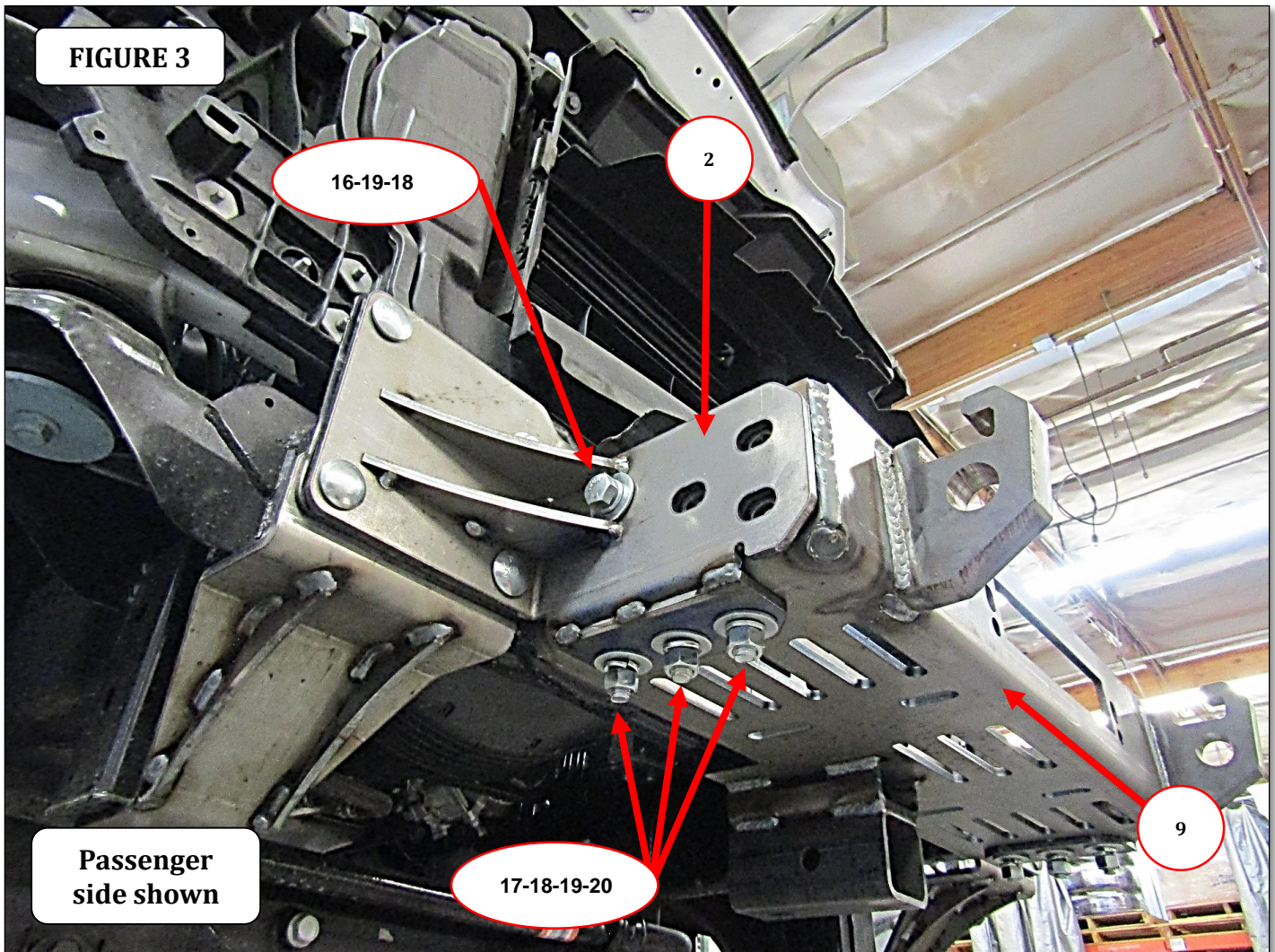
**Step-2** Position one of the auxiliary brackets behind the flange on the end of the frame, and on the bottom of the tow hook frame stanchion. Secure the auxiliary bracket and the frame bracket to the flange using (2) ½" x 1 ½" carriage bolts, (2) ½" flat washers, (2) ½" lock washers and (2) ½" hex nuts. Secure the opposite end of the auxiliary bracket to the tow hook frame stanchion using (1) M12 x 40mm hex bolt, (1) ½" flat washer and (1) ½" lock washer, (FIGURE 2). Leave the nuts and bolts loose for final adjustment. Repeat step 1 and 2 to install the driver side frame bracket and auxiliary bracket.





## INSTALLATION INSTRUCTIONS

**Step-3** Position the winch tray between the frame brackets with the bottom of the winch tray resting on the flange of the frame brackets. Align the holes and secure the sides of the winch tray to each frame bracket using (1) ½" x 1 ½" hex bolt, (1) ½" lock washer and (1) ½" flat washer. Attach the bottom of the winch tray to the flange of each frame bracket using (3) ½" x 1 ½" carriage bolts, (3) ½" flat washers, (3) ½" lock washers and (3) ½" hex nuts, (FIGURE 3). Leave the nuts and bolts loose for final adjustment.

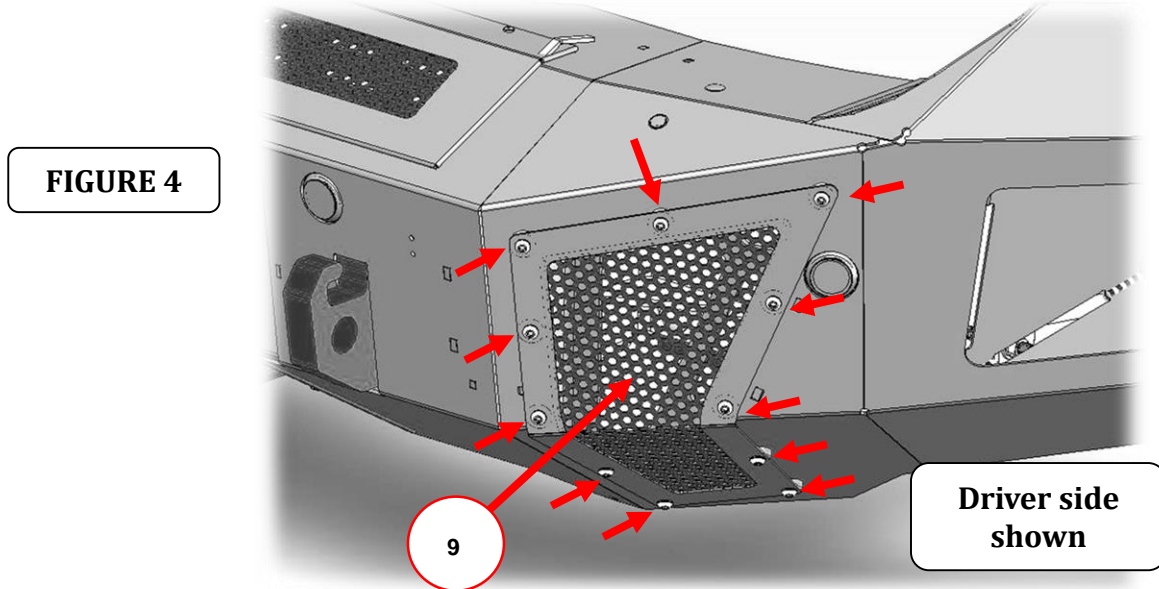


**Note:** If you are installing a winch, place the winch in the winch tray and refer to the winch manufacturer's instructions for installation. Do not install the fairlead at this time.

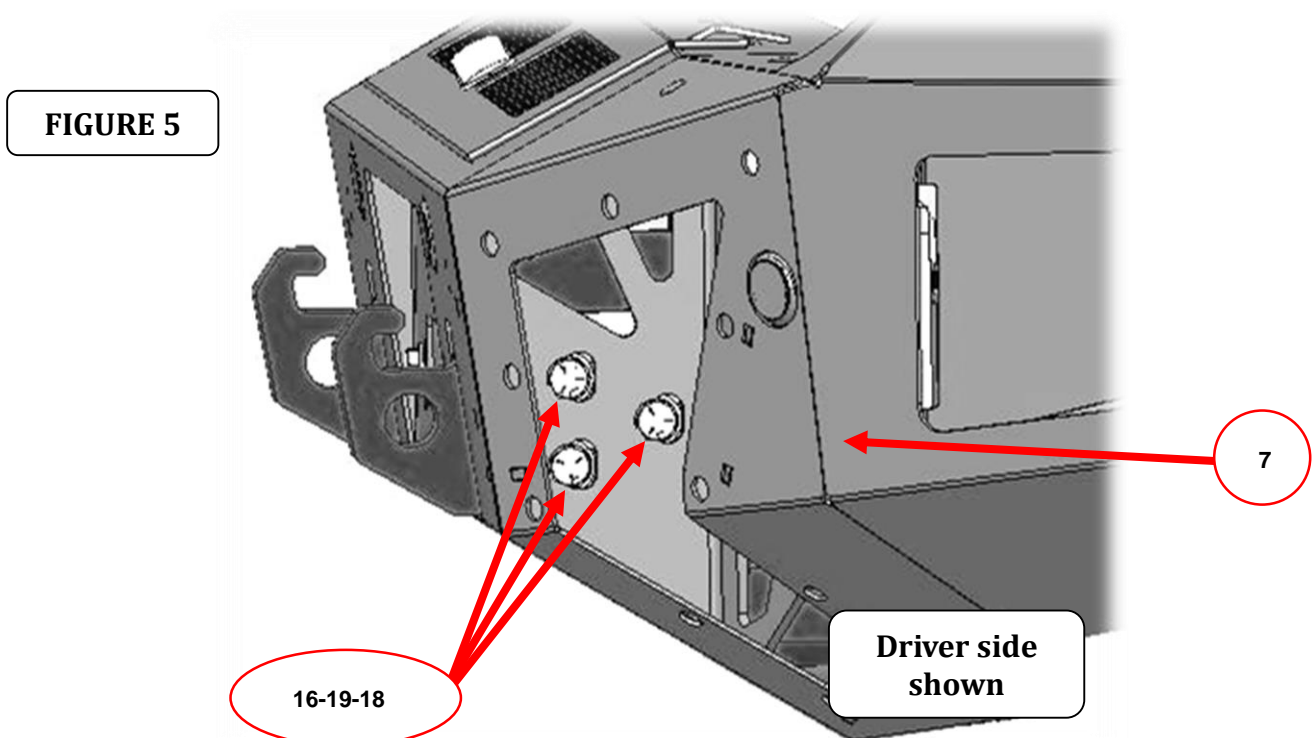
# GORRHINO<sup>®</sup>

## INSTALLATION INSTRUCTIONS

**Step-4** The pre-installed Mesh Vent Covers need to be removed from each side of the bumper using hand tools to slowly remove the bolts, (FIGURE 4). Note: Using an air assisted impact or ratchet will damage the bolt threads and rubber rivet-nut assembly.



**Step-5** With assistance lift the bumper shell up to the vehicle, align the holes in the bumper shell brackets with the holes in the frame brackets, and weld nuts on the winch tray. Secure the bumper shell bracket to each side of the winch tray using (3) ½" x 1 1/2" hex bolts, (3) ½" lock washers and (3) ½" flat washers, (FIGURE 5). Leave the bolts loose for final adjustment.

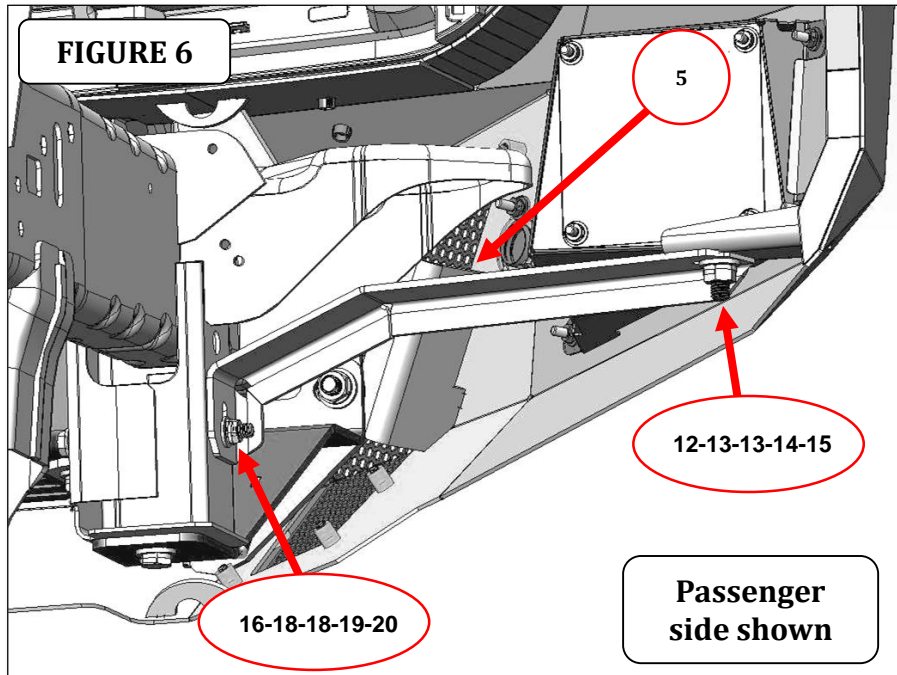




# GO RHINO®

## INSTALLATION INSTRUCTIONS

**Step-6** Secure the passenger side support bracket to the side of the tow hook frame stanchion using (1) 3/8" x 5" hex bolt (2) 3/8" flat washers, (1) 3/8" lock washer and (1) 3/8" hex nut. Attach the opposite end of the support bracket to the bumper shell bracket using (1) 1/2" x 1 1/2" hex bolt, (2) 1/2" flat washers, (1) 1/2" lock washer and (1) 1/2" hex nut, (FIGURE 6). Repeat this step to install the driver side support bracket.



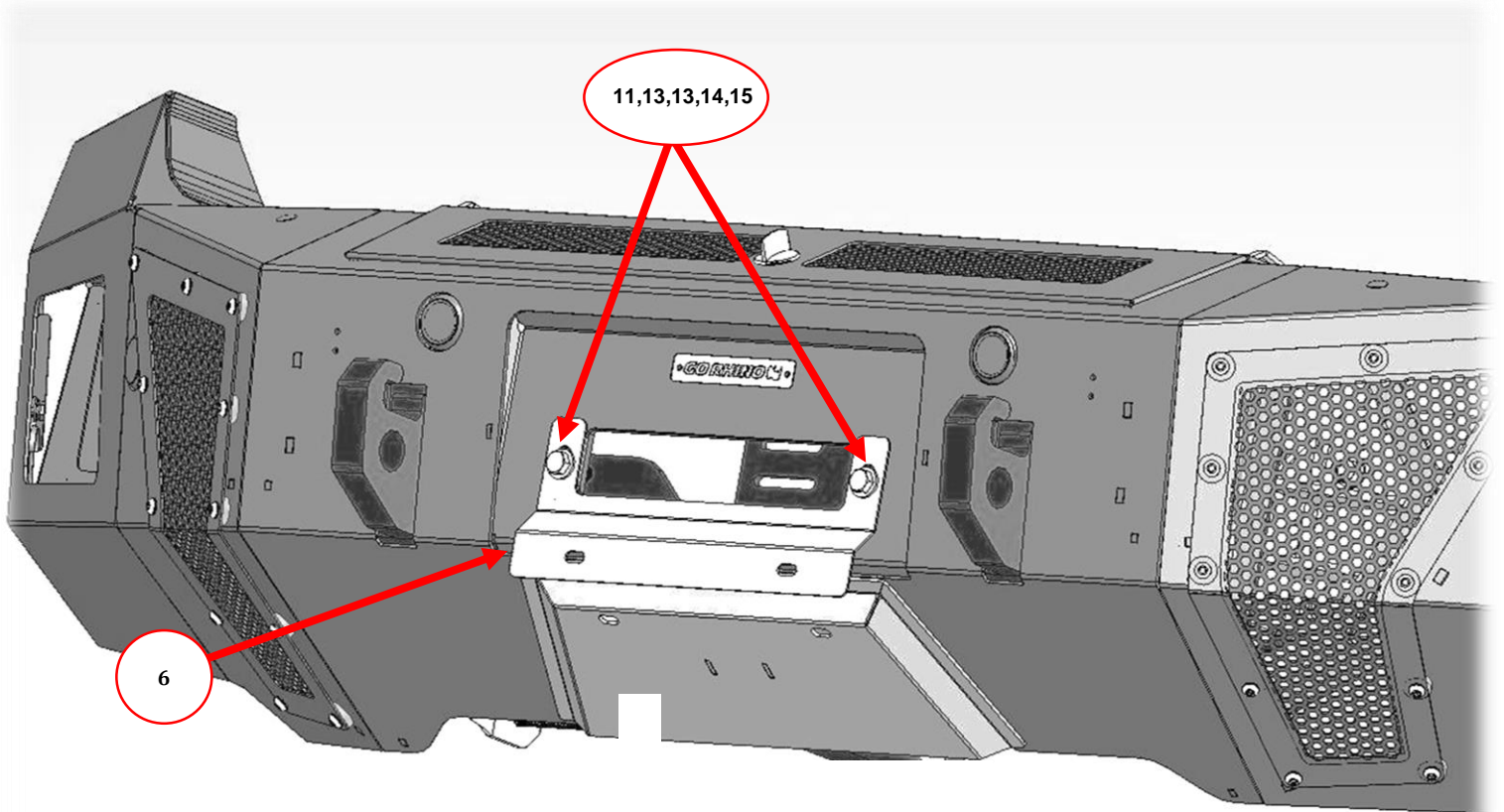
**Step-7** With assistance, adjust and hold the bumper shell visual alignment position, then tighten all supplied nuts and bolts securing the brackets, winch tray and bumper shell.



# GO RHINO®

## INSTALLATION INSTRUCTIONS

**Step-13** If your state law requires a front license plate, attach the license plate bracket to the holes in the face of the bumper shell, using the supplied 3/8" bolts, washers and nuts. Attach the license plate to the holes in the license plate bracket. If installing a winch, attach the license plate directly to the holes in the hitch cover, (FIGURE 8).



**FIGURE 8**

**Remember to check and retighten all factory and supplied nuts and bolts periodically.**