

GO RHINO! PRODUCTS 3000 SERIES INSTALLATION INSTRUCTIONS
03-06 FORD EXPEDITION 2/4WD PART NO. 3285 B-C

REV.B 6/09

<u>QTY</u>	<u>PARTS DESCRIPTION</u>	<u>QTY</u>	<u>PARTS DESCRIPTION</u>
1	P200 PLUG KIT	4	1/2" X 1 1/2" HEX BOLTS
6	1/4" X 3/4" BUTTON HEAD BOLTS	4	1/2" FLAT WASHERS
6	1/4" LOCK WASHERS	4	1/2" LOCK WASHERS
6	1/4" FLAT WASHERS	4	1/2" HEX NUTS
6	1/4" HEX NUTS	2	1122LP LICENSE PLATE BRACKETS
4	5/16" X 1" HEX BOLTS	1	1122AD DRIVER SIDE UPPER BRACKET
4	5/16" LOCK WASHERS	1	1122AP PASSENGER SIDE UPPER BRACKET
4	5/16" HEX NUTS	1	1122BD DRIVER SIDE LOWER BRACKET
6	3/8" X 1" BUTTON HEAD BOLTS	1	1122BP PASSENGER SIDE LOWER BRACKET
6	3/8" X 1" HEX BOLTS	5	1/4" PLASTIC PIN GRIPS
6	3/8" LOCK WASHERS		
6	3/8" HEX NUTS		

ASSEMBLY INSTRUCTIONS

STEP 1. BEGIN THE ASSEMBLY BY LOOSELY ATTACHING THE BOTTOM STEP TUBE TO THE GRILLE GUARD SIDE PLATES USING THE 3/8" X 1" BUTTON HEAD BOLTS.

STEP 2. INSTALL THE TUBE CONNECTORS FROM THE P200 PLUG KIT INTO THE TOP TUBE.

STEP 3. POSITION THE CENTER PLATE BETWEEN THE GRILLE GUARD SIDE PLATES. ATTACH USING THE 3/8"

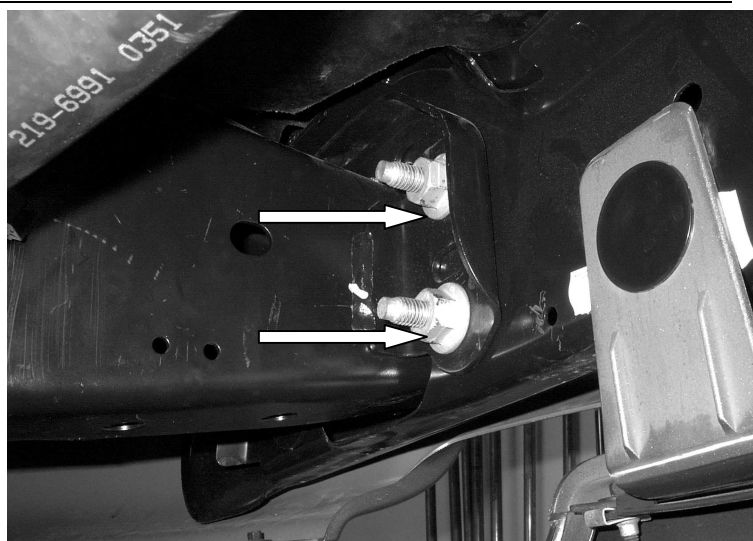
HEX HEAD BOLTS SUPPLIED.

STEP 4. ALIGN THE GRILLE AND TIGHTEN ALL NUTS AND BOLTS.

INSTALLATION INSTRUCTIONS

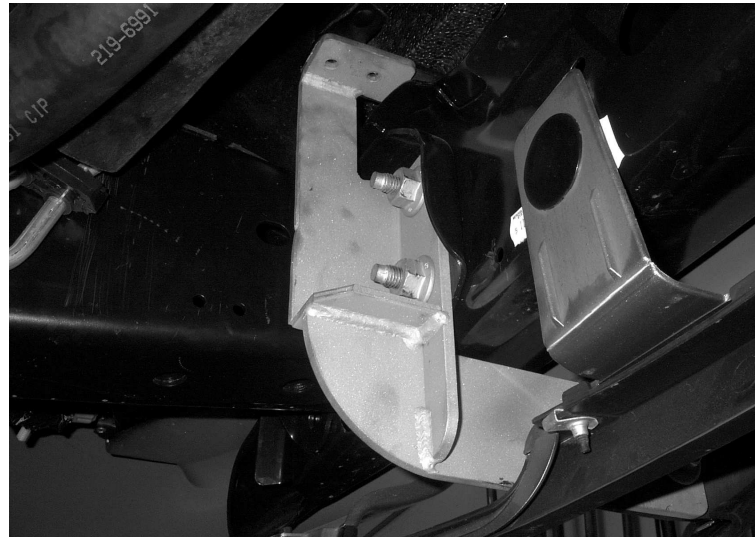
STEP 1. REMOVE THE LICENSE PLATE AND MOUNTING BRACKET FROM THE FRONT BUMPER.

STEP 2. BEGINNING WITH THE DRIVER SIDE, LOCATE AND REMOVE THE TWO HEX NUTS FROM THE BOLT ASSEMBLY THAT SECURE THE BUMPER TO THE FRAME FLANGE.



NOTE: REMOVE THE (3) PLASTIC RIVETS AND PULL BACK THE RUBBER SPLASH GUARD TO EASE THE INSTALLATION.

STEP 3. POSITION 1122BD LOWER BRACKET OVER THE BOLTS, AND ATTACH IT TO THE FRAME FLANGE USING THE FACTORY NUTS. (FINGER TIGHTEN ONLY).

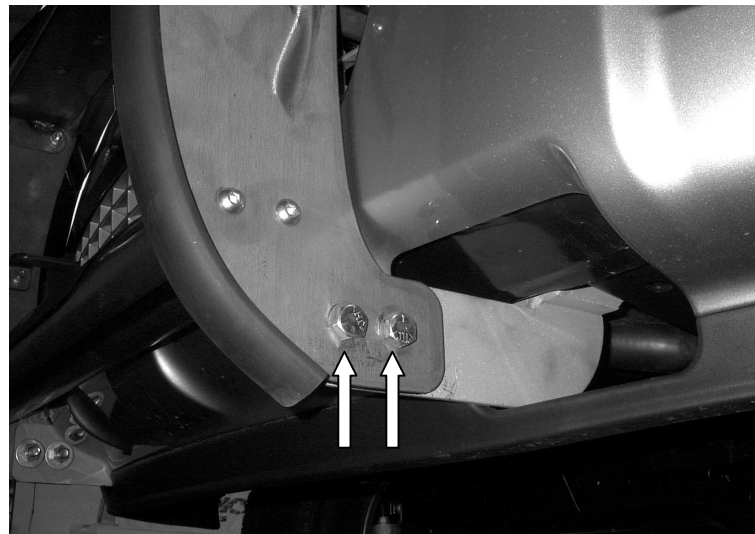


STEP 4. INSERT 1122AD UPPER BRACKET THROUGH THE OPENING IN THE GRILLE, AND ATTACH IT TO 1122BD LOWER BRACKET USING THE 5/16" HEX HEAD BOLTS. (FINGER TIGHTEN ONLY).

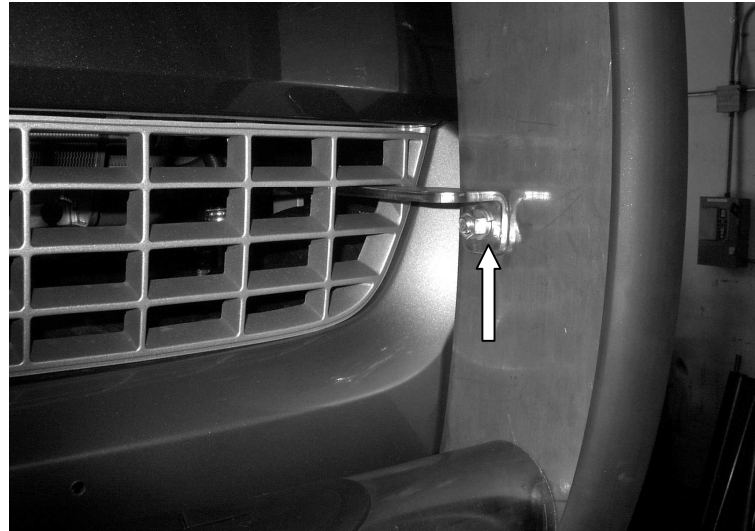


STEP 5. REPEAT THE ABOVE STEPS FOR THE PASSENGER SIDE BRACKETS.

STEP 6. ATTACH THE GRILLE GUARD ASSEMBLY TO THE LOWER BRACKETS USING THE 1/2" FASTENERS.



STEP 7. ATTACH THE GRILLE GUARD ASSEMBLY TO THE UPPER BRACKETS USING THE 3/8" FASTENERS.



STEP 8. ALIGN THE GRILLE GUARD ASSEMBLY WITH THE FRONT OF THE VEHICLE AND TIGHTEN ALL MOUNTING NUTS AND BOLTS.

STEP 9. ATTACH 1122LP LICENSE PLATE BRACKETS AND THE LICENSE PLATE TO THE BOTTOM SIDE OF THE GRILLE GUARD CENTER PLATE, USING THE 1/4" FASTENERS.



STEP 10. RE-ATTACH THE RUBBER SPLASH GUARD USING THE PLASTIC RIVETS SUPPLIED.
