

INSTALLATION INSTRUCTIONS

Dakar Sport 52123(1-4) / Dakar 52123(1BB-4BB) / Rhino Charger BB52123(1B-4PS)

02 – 03 Dodge Ram 1500/2500/3500

Parts List :

QTY	(1) Hardware kit including :
(1) Bull nose	(8) 3/8 x 1 1/4" Hex head bolts
(2) Mounting brackets (Driver & Passenger)	(8) 3/8" Flat washers
	(8) 3/8" Hex nuts

Tools Required :

9/16" Socket	Small flat tip screwdriver
9/16" Wrench	Ratchet

Instructions :

Approximated installation time: 20 min.

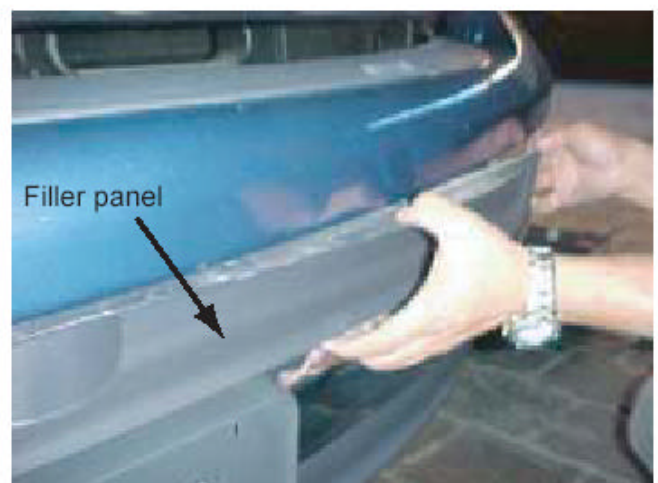
1. Read and understand instructions completely before beginning installation.
2. The center bumper filler must be removed so brackets can be mounted to frame surface. From the backside of bumper, use a screwdriver to push out the center of plastic rivet as shown in Picture 1. Once the center is pushed out, push out the main body of the rivet. Remove all four rivets and the bumper filler. Picture 2.
3. Cut the bumper filler with the indications shown in Illustration 1. Install filler panel.
4. Locate holes on front of frame face. Place the mounting bracket up to the two holes closest to the outside of vehicle, as shown in Picture 3. Install 3/8 x 1 1/4" hex head bolts, flat washers and lock nuts. Leave loose. Repeat for opposite side. **Note:** Mounting bracket has 5 mounting holes, 2500/3500 series pick ups, use the outer most hole locations on the mounting bracket. If your vehicle is 1500 series pick up, use the inner most hole locations on the mounting bracket.
5. Place the Bull nose up to the mounting brackets and bolt them together using 1/2 x 2" hex head bolts, flat and lock washers. Leave hardware loose.
6. Make any final adjustments to the alignment of the Bull nose and tighten all bolts.
7. You may need to periodically re-tighten the bolts.

Assembly Diagram :

Picture 1



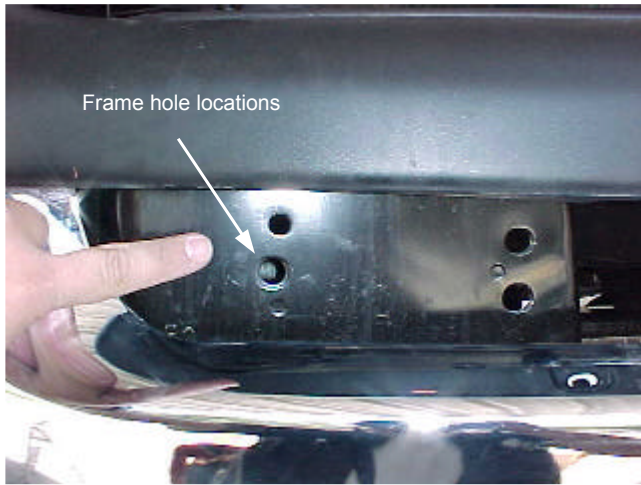
Picture 2



INSTALLATION INSTRUCTIONS

Dakar Sport 52123(1-4) / Dakar 52123(1BB-4BB) / Rhino Charger BB52123(1B-4PS)
02 – 03 Dodge Ram 1500/2500/3500

Picture 3



Picture 4

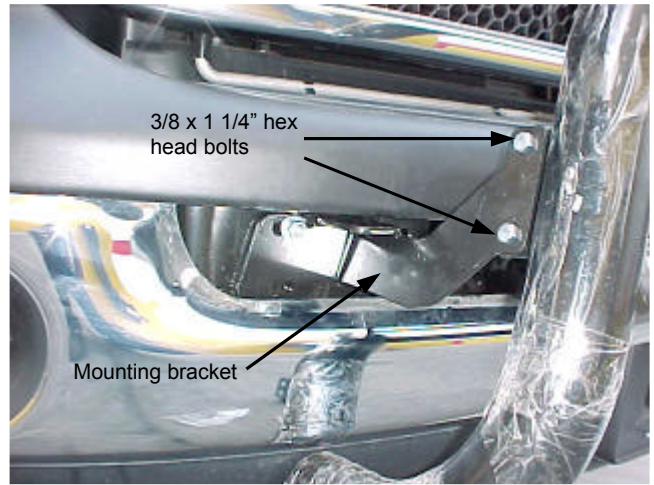
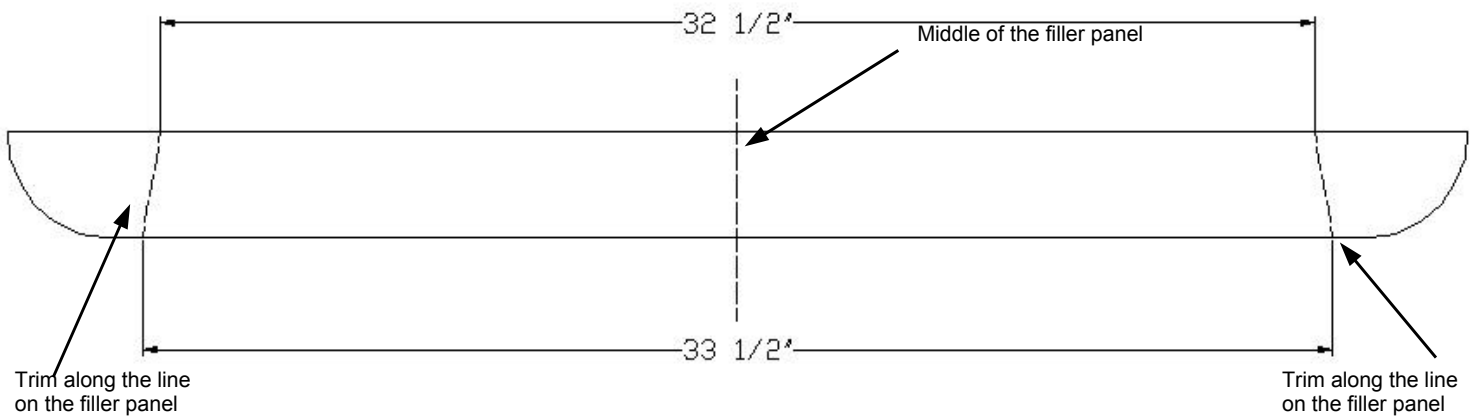


Illustration 1



Cleaning and care instructions :

Protect the finish with a non-abrasive automotive wax, (e.g. Pure Carnauba) on a regular basis. The use of any soap, polish, or wax that contains an abrasive is detrimental to the finish, as the compounds scratch the finish and cause corrosion.

INSTALATION INSTRUCTIONS

Bull Bar Frame

Part's List:

1Pc. - Bull Bar Frame

Required Tools:

Refer to the Bracket Installation instructions.

Steps:

1. Install the brackets (sold separately) on the vehicle.
2. Place the Bullbar frame into the brackets
3. Align and adjust the bullbar frame.
4. Tighten all the hardware.
5. Install auxilliary ligths (sold separately) on the welded plates shown on illstration.

