



## INSTALLATION INSTRUCTIONS

*RHINO! CHARGER* PART NUMBER 5598 (B-PS)

2011 FORD F-250, F-350 AND F-450 SUPER DUTY P/U 2/4WD

**Do not attempt to install this product on any vehicle other than the one it is designed for and listed above!**

### Parts List

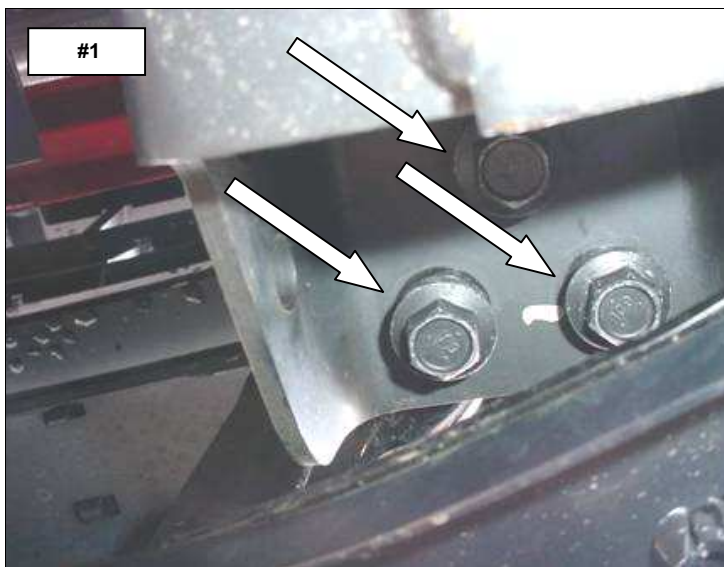
| <u>QTY</u> | <u>Part Description</u> | <u>QTY</u> | <u>Part Description</u>          |
|------------|-------------------------|------------|----------------------------------|
| 6          | 3/8" x 1" Carriage Bolt | 2          | 55981) Tubular Spacer            |
| 8          | 3/8" Flat Washer        | 2          | 55980) Upper Bracket             |
| 6          | 3/8" Lock Washer        | 1          | 5223940) Driver Lower Bracket    |
| 6          | 3/8" Hex Nut            | 1          | 5223940) Passenger Lower Bracket |
| 2          | 10m x 60m Hex Bolt      |            |                                  |

### Installation

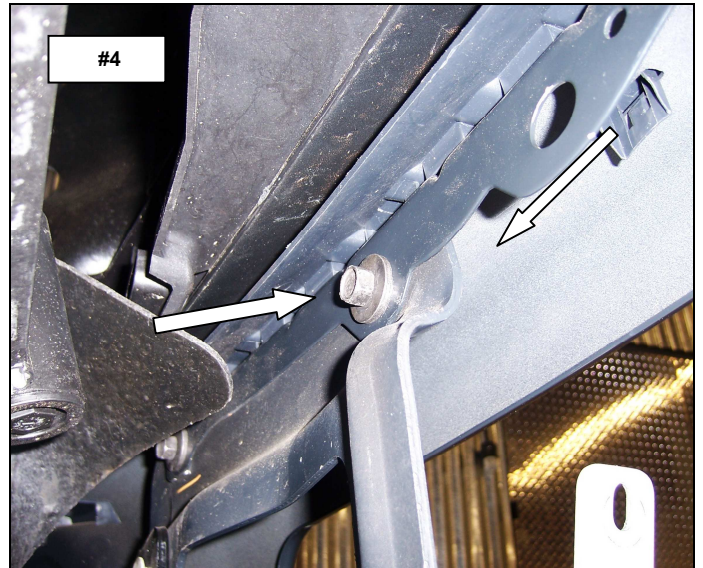
Read the installation instructions completely and verify that all of the parts listed are accounted for.

**Step-1** Beginning with the driver side loosen the (3) bolts that attach the tow hook to the frame. Access the bolts from the opening in the bottom of the frame. **Photo #1**

**Step-2** Slide the lower bracket into place between the tow hook and the frame. Leave the tow hook bolts loose for final adjustment. **Photo #2 & #3**

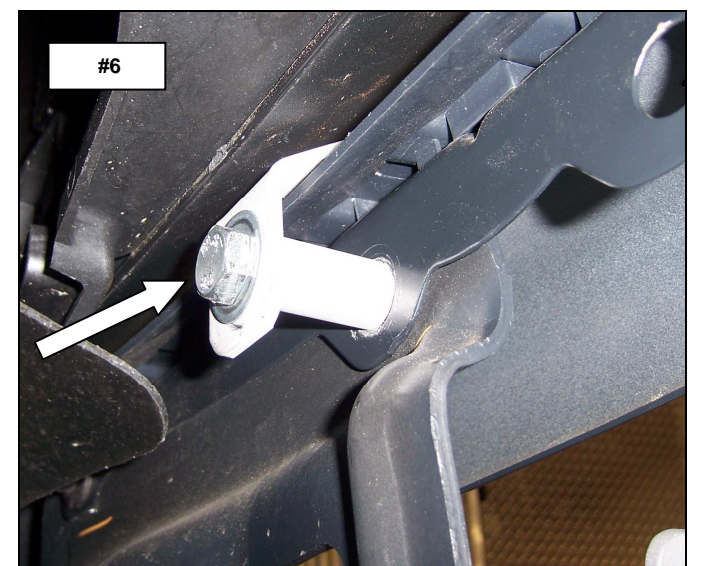
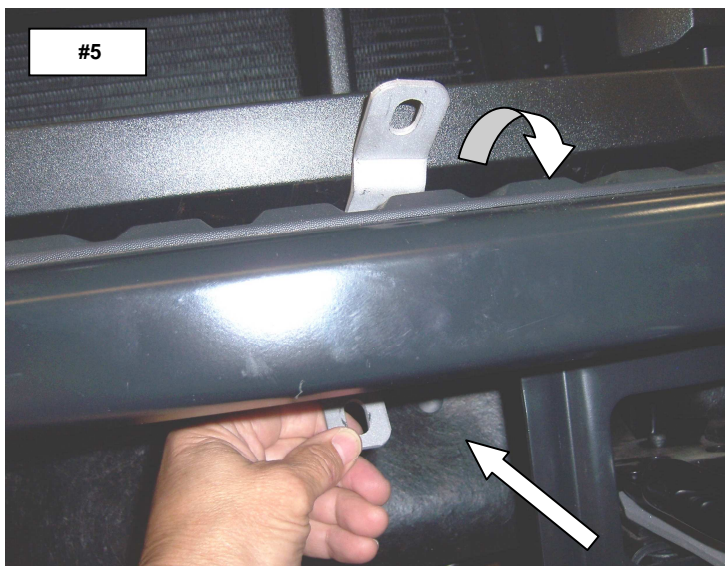


**Step-3** From behind the bumper locate and remove the bumper bolt. **Photo #4**



**Step-4** Position one of the upper brackets behind the bumper, so the longer leg of the bracket extends out between the top of the bumper and the bottom of the grille. **Photo #5**

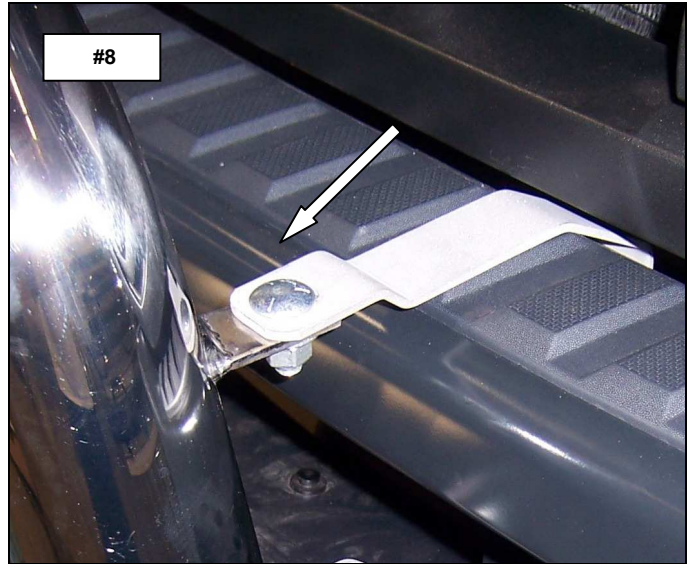
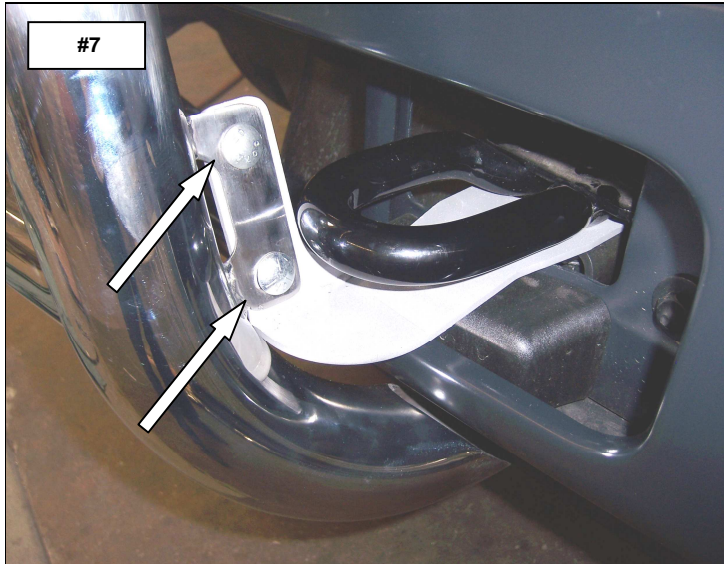
**Step-5** Attach the upper bracket to the bumper using (1) 10m X 60m hex bolt, (1) 3/8" flat washer and (1) tubular spacer. Leave the bolt loose for final adjustment. **Photo #6**



Repeat the above steps to install the passenger side lower and upper brackets.

**Step-6** Attach the Rhino Charger to the lower brackets using (2) 3/8" x 1" carriage bolts, (2) 3/8" flat washers, (2) 3/8" lock washers and (2) 3/8" hex nuts for each side. **Photo #7**

**Step-7** Attach the Rhino Charger to the upper brackets using (1) 3/8" x 1" carriage bolt, (1) 3/8" flat washer, (1) 3/8" lock washer and (1) 3/8" hex nut for each side. **Photo #8**



**Step-8** Align the Rhino Charge bar and bracket assembly and tighten all nuts and bolts. Remember to check and re-tighten the hardware periodically.



**Please do not return this product to place of purchase.**