



INSTALLATION INSTRUCTIONS

RHINO! CHARGER PART NUMBER 5516 (B-PS)

2007-2010 Chevrolet Silverado 1500 & GMC Sierra 1500 P/U 2/4WD

Do not attempt to install this product on any vehicle other than the one it is designed for and listed above!

Parts List

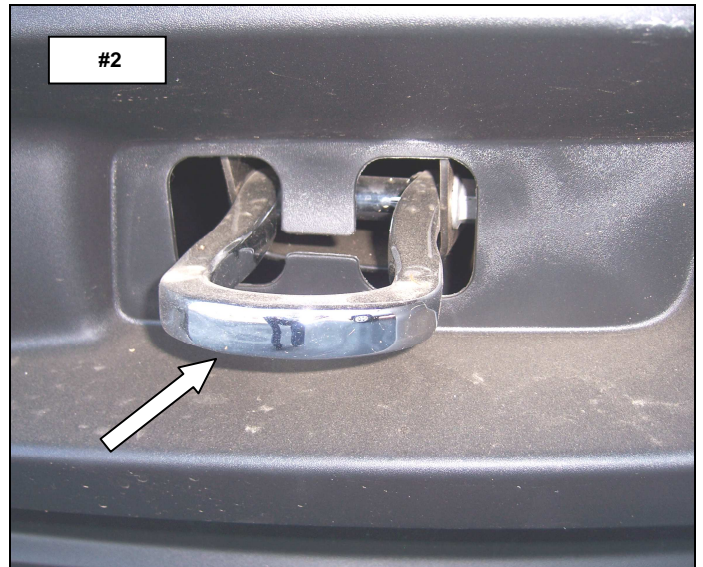
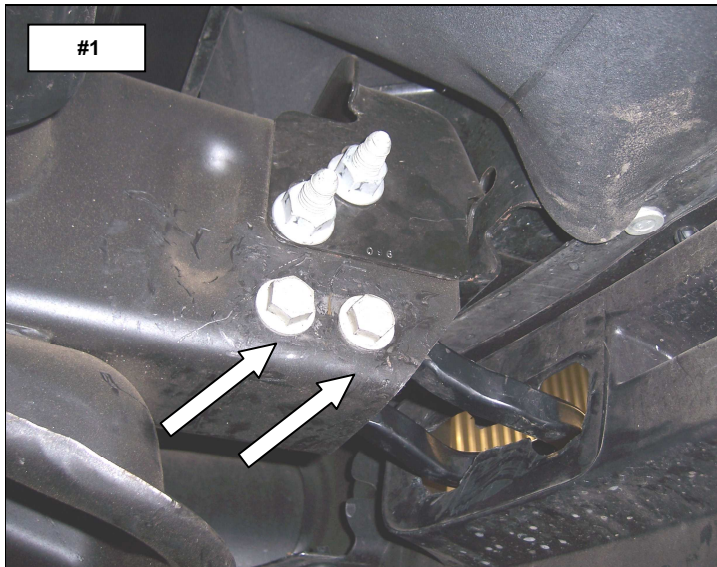
<u>QTY</u>	<u>Part Description</u>	<u>QTY</u>	<u>Part Description</u>
4	3/8" x 1" Carriage Bolt	4	1/2" Hex Nut
4	3/8" Flat Washer	6	1/2" Flat Washer
4	3/8" Lock Washer 3/8"	4	1/2" Lock Washer
4	Hex Nut	1	55161) Driver Bracket
2	1/2" Rod Bolt	1	55162) Passenger Bracket
2	1/2" X 5 1/2" Hex Bolt	1	5217602) Rhino Charger

Installation

Read the installation instructions completely and verify that all of the parts listed are accounted for.

Step-1 Beginning with the driver side remove the bolts and tow hook from the frame rail. **Photo #1 & #2**

Note: The tow hook will not be re-installed.



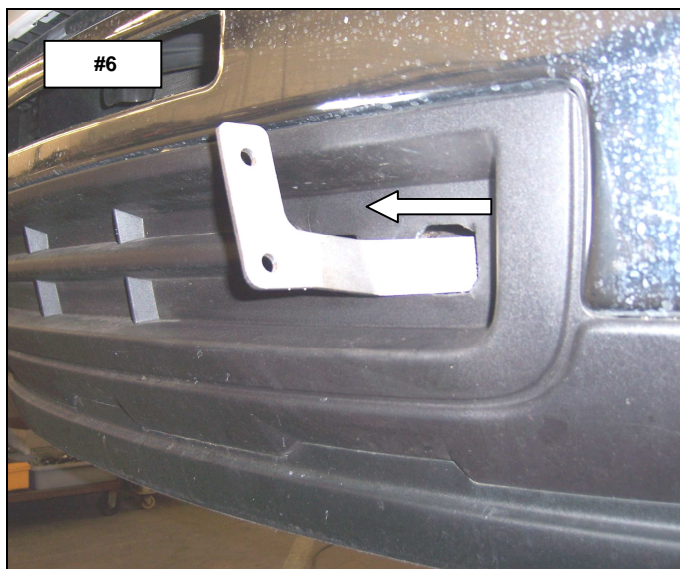
Chevrolet Silverado Models

Step-2 From the front of the vehicle, bend down the tab in the plastic bumper valance and slide the driver side bracket through the tow hook opening. **Photo #3 & #4**

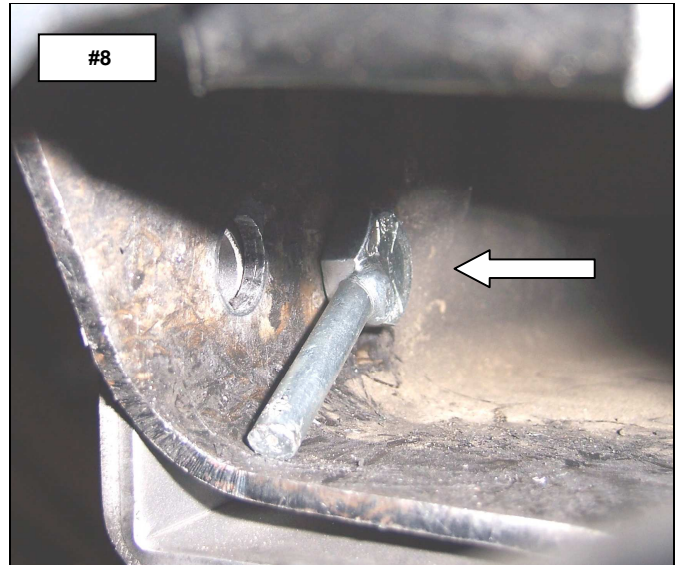
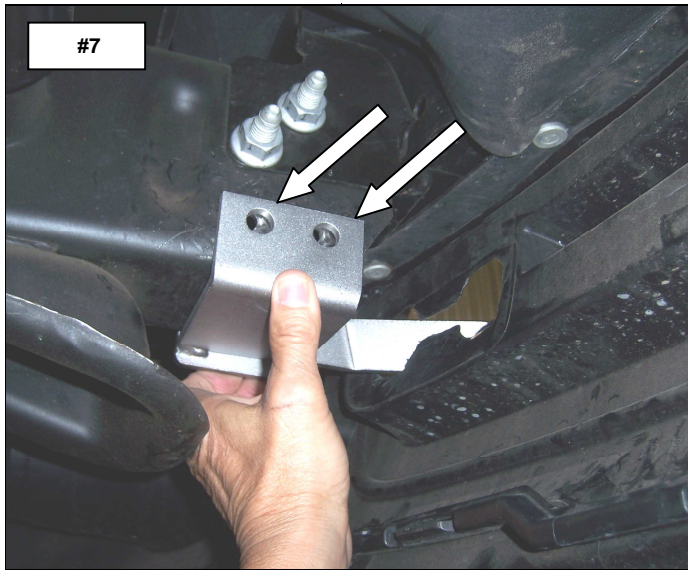


GMC Sierra Models

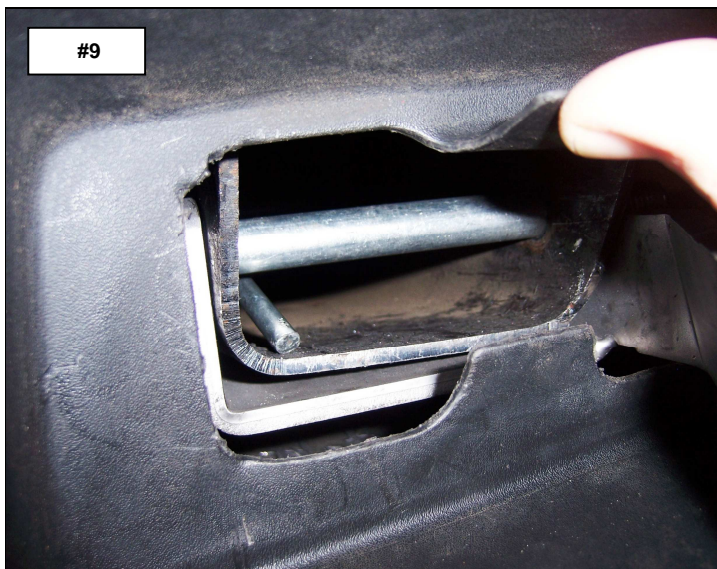
Step-2 From behind the bumper valance, position the driver side bracket so the leg of the bracket extends out through the tow hook opening, then rotate and align the bracket with the frame. **Photo #5 & #6**



Step-3 Align the bracket with the tow hook holes in the frame and install (1) ½” rod bolt into the frame, so the threads extend out through the rear tow hook mounting hole and bracket. **Photo #7 & #8**

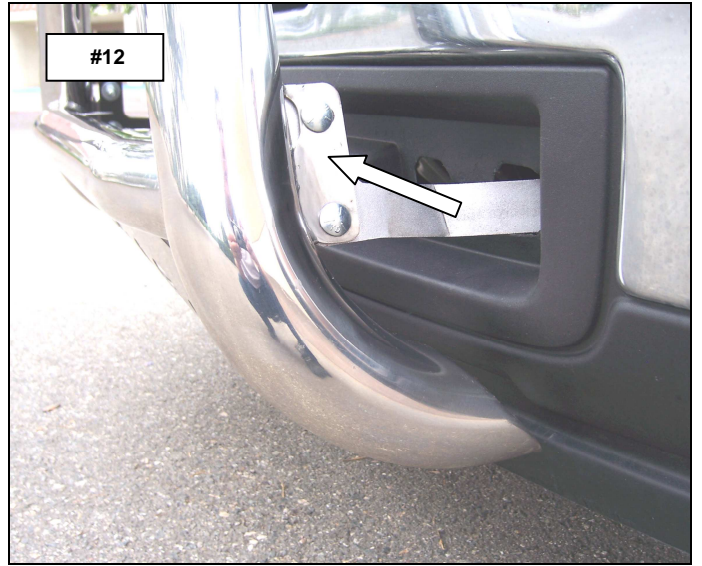


Step-4 Install (1) ½” x 5 ½” hex bolt with (1) flat washer through the bracket and front tow hook mounting holes. Secure the bracket using (2) ½” flat washers ½” (2) lock washers and (2) ½” hex nuts. Leave the nuts and bolts loose for final adjustment. **Photo #9 & #10**



Repeat the above steps to install the passenger bracket.

Step-5 Attach the Rhino Charger bar to the mounting brackets using (2) 3/8" x 1" carriage bolts, (2) 3/8" flat washers, (2) 3/8" lock washers and (2) 3/8" hex nuts for each side. **Photo #11 & #12**



Step-6 Align the Rhino Charger bar, bracket assembly and tighten all nuts and bolts. Remember to check and re-tighten the hardware periodically.

