



3000 SERIES STEPGUARD

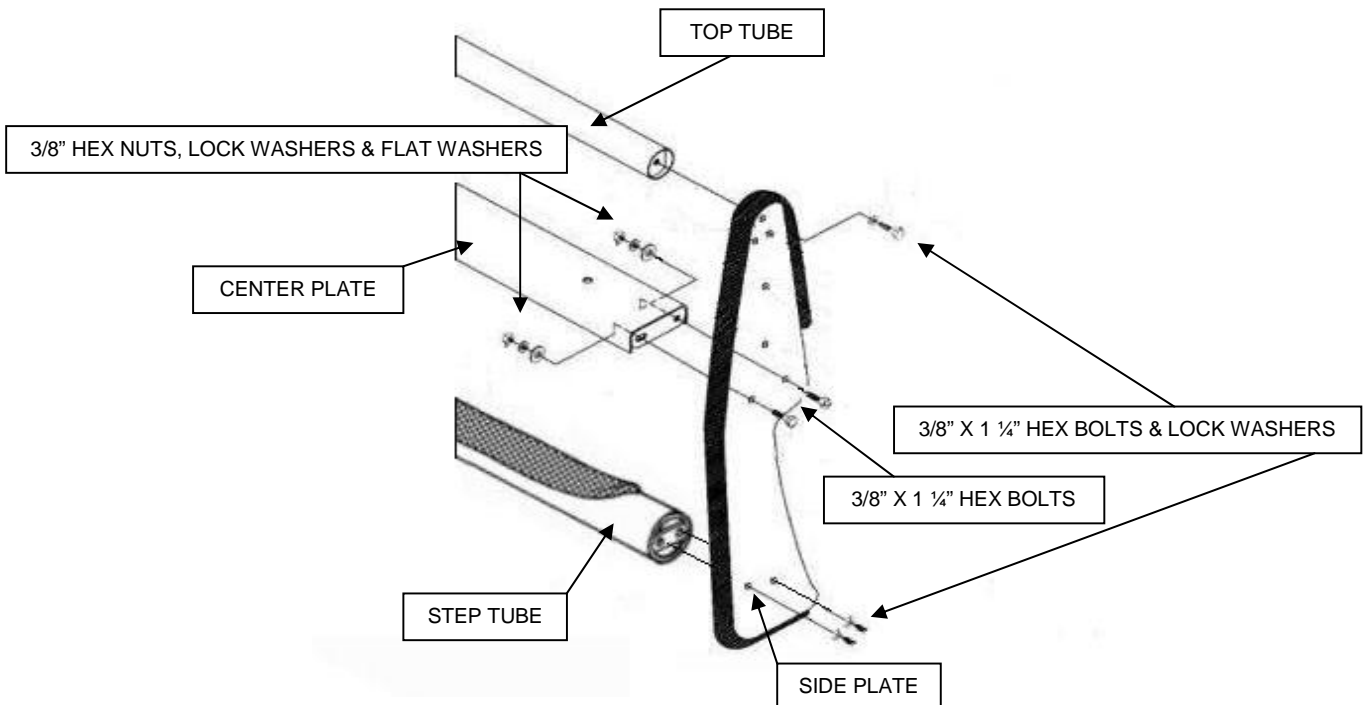
GRILLE GUARD ASSEMBLY INSTRUCTIONS

PART NO. 3371B & 3371C 2011 FORD F-250, F-350 & F-450 SUPER DUTY 2/4WD

Do not attempt to install this product on any vehicle other than the one it is designed for and listed above!

PARTS LIST

<u>QTY</u>	<u>PART DESCRIPTION</u>	<u>QTY</u>	<u>PART DESCRIPTION</u>
10	3/8" X 1 1/4" HEX BOLT	2	3371) SIDE PLATE
10	3/8" LOCK WASHER	1	ST3912) 3" X 39 1/2" BOTTOM STEP TUBE
4	3/8" HEX NUT	1	CP3912) 39 1/2" CENTER PLATE
4	3/8" FLAT WASHER	1	TT3912) 2" X 39 1/2" TOP TUBE



ASSEMBLY

READ THE ASSEMBLY AND INSTALLATION INSTRUCTIONS COMPLETELY BEFORE YOU BEGIN.

NOTE: THIS INSTALLATION REQUIRES CUTTING OR REMOVAL OF THE AIR DAM.

STEP-1 BEGIN THE GRILLE GUARD ASSEMBLY BY LAYING THE COMPONENTS OUT ON A PROTECTIVE SURFACE.

STEP-2 POSITION THE GRILLE GUARD SIDE PLATES WITH THE FRONT EDGE DOWN AND THE TOP AND BOTTOM STEP TUBE BETWEEN THE SIDE PLATES.

STEP-3 ATTACH THE TOP AND BOTTOM STEP TUBE TO THE SIDE PLATES USING THE 3/8" X 1 1/4" HEX BOLTS AND LOCK WASHERS. DO NOT TIGHTEN.

STEP-4 POSITION THE CENTER PLATE BETWEEN THE GRILLE GUARD SIDE PLATES, WITH THE SLOTTED MOUNTING HOLES IN THE CENTER PLATE DOWN.

STEP-5 INSERT THE 3/8" X 1 1/4" HEX BOLTS THROUGH THE HOLES IN THE SIDE PLATES AND CENTER PLATE, AND INSTALL THE 3/8" FLAT WASHERS, LOCK WASHER AND HEX NUTS. DO NOT TIGHTEN.

STEP-6 ALIGN THE GRILLE GUARD, AND TIGHTEN ALL NUTS AND BOLTS.



3000 SERIES STEPGUARD

GRILLE GUARD INSTALLATION INSTRUCTIONS

PART NO. 3371B & 3371C 2011 FORD F-250, F-350 & F-450 SUPER DUTY 2/4WD

Do not attempt to install this product on any vehicle other than the one it is designed for and listed above!

PARTS LIST

<u>QTY</u>	<u>PART DESCRIPTION</u>	<u>QTY</u>	<u>PART DESCRIPTION</u>
8	1/2" X 1 1/2" HEX BOLT	1	572394AA) DRIVER UPPER BRACKET
10	1/2" LOCK WASHER	1	572394AA) PASSENGER UPPER BRACKET
10	1/2" FLAT WASHER	1	5323943) DRIVER LOWER BRACKET
10	1/2" HEX NUT	1	5323943) PASSENGER LOWER BRACKET
2	378312) 1/2" BOLT PLATE		

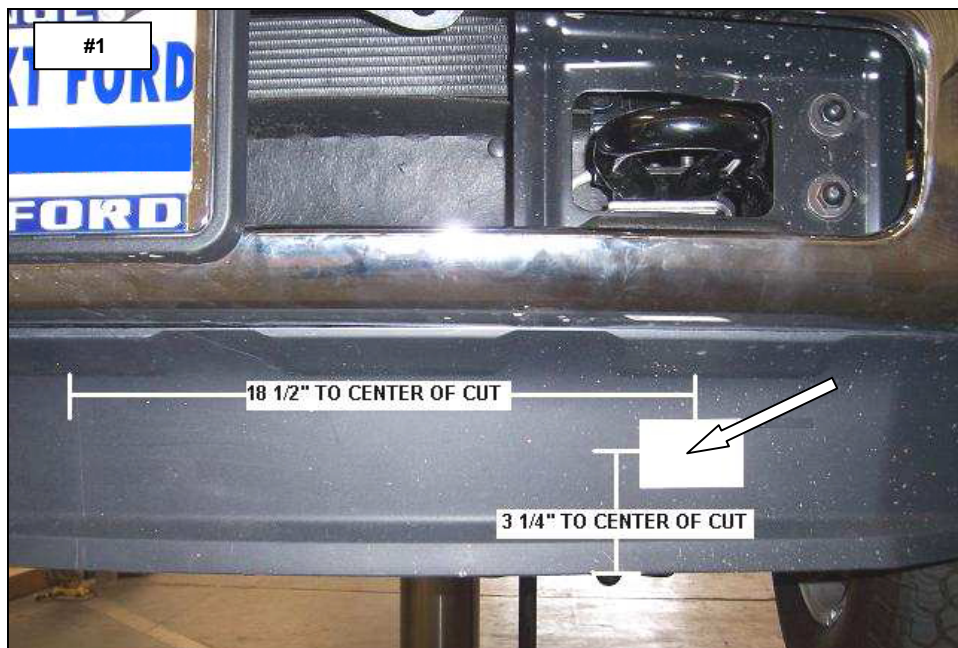
INSTALLATION

READ THE ASSEMBLY AND INSTALLATION INSTRUCTIONS COMPLETELY BEFORE YOU BEGIN.

NOTE: THIS INSTALLATION REQUIRES CUTTING OR REMOVAL OF THE AIR DAM.

STEP-1 AN OPENING MUST BE CUT OUT IN THE AIR DAM TO ALLOW THE LOWER MOUNTING BRACKETS TO EXTEND THROUGH. BEGINNING WITH THE DRIVER SIDE, MEASURE FROM THE CENTER OF THE AIR DAM 18 1/2" AND UP FROM THE BOTTOM 3 1/4" AND MARK THE CENTER OF THE OPENING TO BE CUT OUT. **PHOTO #1**

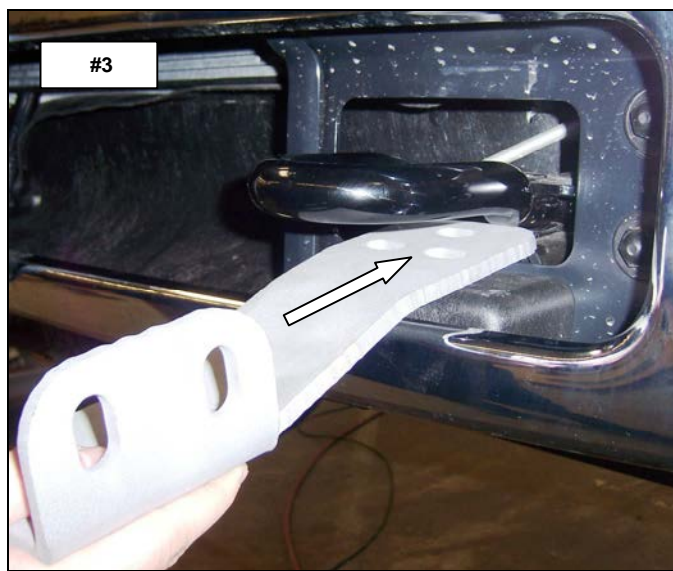
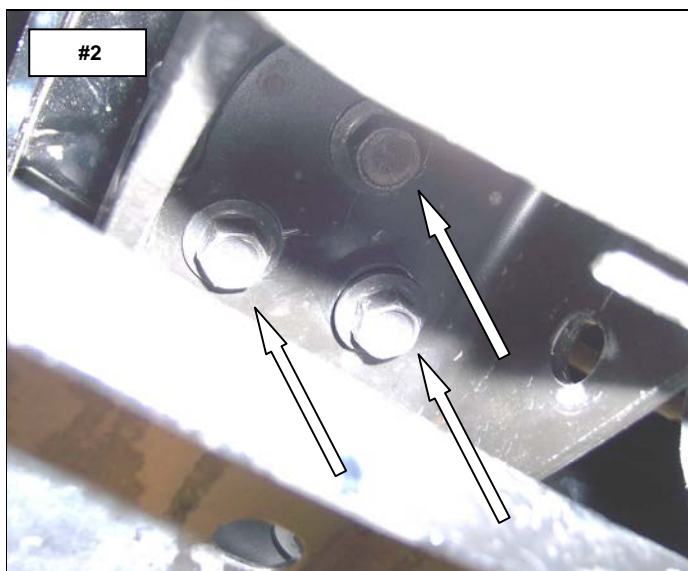
STEP-2 USE A UTILITY KNIFE AND CAREFULLY CUT OUT A 3" WIDE BY 2" HIGH SECTION FROM THE AIR DAM. **MEASURE AND CUT OUT THE OPENING IN THE PASSENGER SIDE OF THE AIR DAM.**



STEP-3 REMOVE THE (3) BOLTS THAT ATTACH THE TOW HOOK TO THE FRAME. TO REMOVE THE TOW HOOK BOLTS, ACCESS THEM FROM THE OPENING IN THE BOTTOM OF THE FRAME. **PHOTO #2**

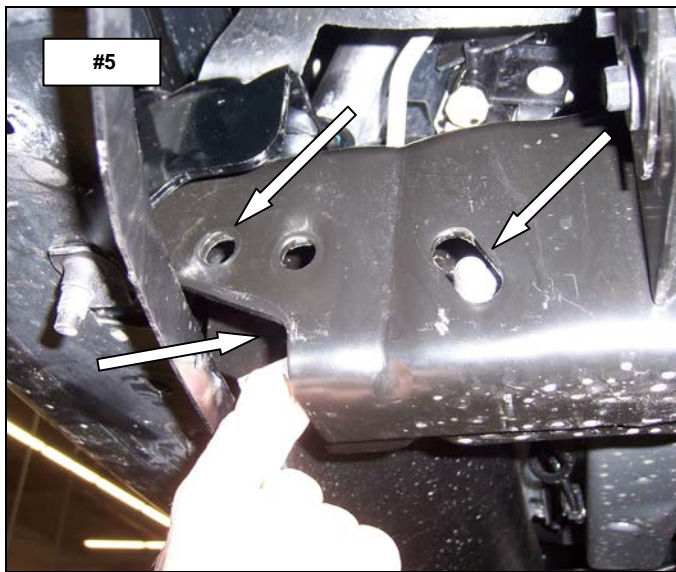
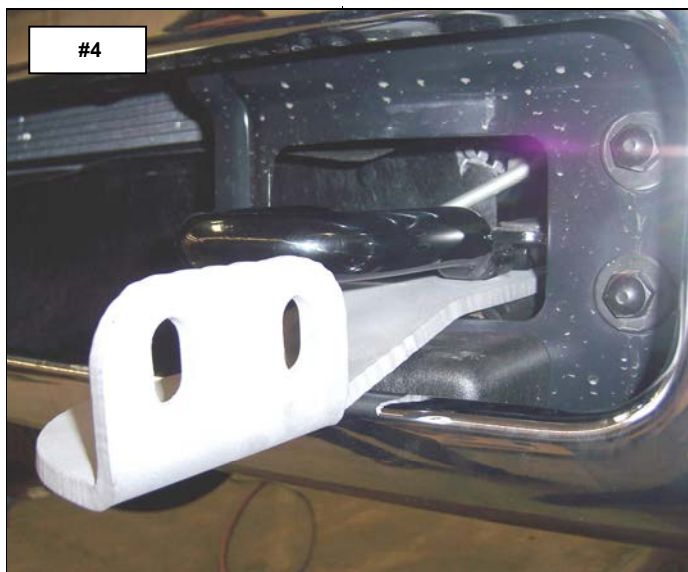
STEP-4 LIFT THE BUMPER AND THE TOW HOOK. POSITION THE UPPER BRACKET BY SLIDING IT BETWEEN THE TOW HOOK AND THE FRAME. **PHOTO #3**

NOTE: THE AIR DAM WAS REMOVED FROM THE VEHICLE FOR PHOTO PURPOSES.



STEP-5 ATTACH THE UPPER BRACKET AND TOW HOOK TO THE FRAME USING THE FACTORY TOW HOOK BOLTS, DO NOT TIGHTEN. **PHOTO #4**

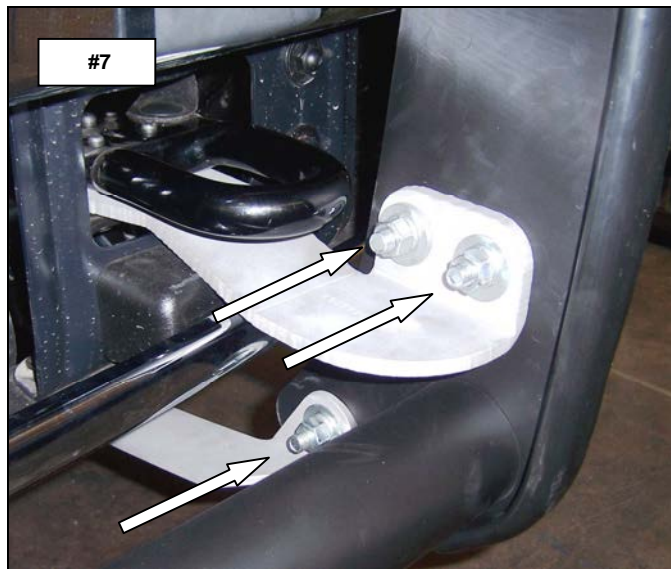
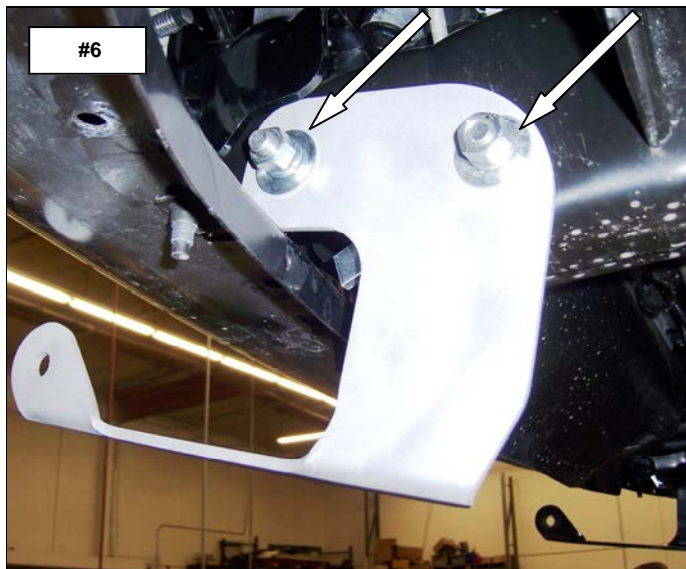
STEP-6 LOCATE THE HOLES IN THE SIDE OF THE FRAME RAIL. POSITION ONE OF THE 1/2" BOLT PLATES INSIDE THE FRAME WITH THE THREADS OF THE BOLT EXTENDING OUT THROUGH THE OBOUNDED HOLE. **PHOTO #5**



STEP-7 POSITION THE LEG OF THE DRIVER SIDE LOWER BRACKET THROUGH THE OPENING CUT OUT IN THE AIR DAM AND ATTACH THE BRACKET TO THE SIDE OF THE FRAME USING THE BOLT PLATE (1) 1/2" X 1 1/2" HEX BOLT, (2) 1/2" FLAT WASHERS (2) 1/2" LOCK WASHERS AND (2) 1/2" HEX NUTS, DO NOT TIGHTEN. **PHOTO #6**

REPEAT THE ABOVE STEPS TO INSTALL THE PASSENGER SIDE UPPER AND LOWER BRACKETS.

STEP-8 ATTACH THE GRILLE AND BRUSH GUARD ASSEMBLY TO THE UPPER AND LOWER BRACKETS USING THE 1/2" X 1 1/2" HEX BOLTS, 1/2" FLAT WASHERS, 1/2" LOCK WASHERS AND 1/2" HEX NUTS, DO NOT TIGHTEN. **PHOTO #7**



STEP-9 ALIGN THE GRILLE GUARD ASSEMBLY WITH THE FRONT OF THE VEHICLE AND TIGHTEN ALL NUTS AND BOLTS.

