



## 3000 SERIES STEPGUARD

### COMPLETE GRILLE & BRUSH GUARD ASSEMBLY INSTRUCTIONS

PART NO. 3324MB & 3324MC 08-09 FORD E-SERIES 2/4WD

**Do not attempt to install this product on any vehicle other than the one it is designed for and listed above!**

#### PACKING LIST

<u>QTY</u>	<u>PARTS DESCRIPTION</u>	<u>QTY</u>	<u>PARTS DESCRIPTION</u>
4	1/4" X 3/4" BUTTON HEAD BOLTS	1	3325P PASSENGER BRUSH GUARD
14	3/8" X 1" BUTTON HEAD BOLTS	1	3325D DRIVER BRUSH GUARD
4	3/8" X 1 1/4" HEX BOLTS	1	F15P PASSENGER HEAD LIGHT PROTECTOR
14	3/8" LOCK WASHERS	1	F15D DRIVER HEAD LIGHT PROTECTOR
10	3/8" HEX NUTS	1	TT3293 2" X 38 1/4" TOP TUBE
4	3/8" FLAT WASHERS	1	CP3293 38 1/4" CENTER PLATE
2	3323 SIDE PLATES	1	ST3293 3" X 38 1/4" BOTTOM STEP TUBE

#### ASSEMBLY INSTRUCTIONS

**READ THE ASSEMBLY AND INSTALLATION INSTRUCTIONS COMPLETELY BEFORE YOU BEGIN.**

**STEP 1.** BEGIN BY LAYING THE COMPONENTS OUT ON A PROTECTIVE SURFACE.

**STEP 2.** POSITION THE GRILLE GUARD SIDE PLATES WITH THE FRONT EDGE DOWN AND THE TOP AND BOTTOM STEP TUBE BETWEEN THE SIDE PLATES.

**STEP 3.** ATTACH THE TOP TUBE TO THE SIDE PLATES USING (2) 3/8" X 1 1/4" HEX BOLTS AND LOCK WASHERS. DO NOT TIGHTEN.

**STEP 4.** ATTACH THE STEP TUBE TO THE SIDE PLATES USING (4) 3/8" X 1" BUTTON HEAD BOLTS. DO NOT TIGHTEN.

**STEP 5.** POSITION THE CENTER PLATE BETWEEN THE GRILLE GUARD SIDE PLATES, WITH THE **SLOTTED HOLES** IN THE CENTER PLATE DOWN.

**STEP 6.** INSERT (2) 3/8" X 1" BUTTON HEAD BOLTS THROUGH THE HOLES IN THE SIDE PLATES AND CENTER PLATE WITH THE **THREADS EXTENDING INWARD** AND INSTALL 3/8" FLAT WASHERS, LOCK WASHER AND HEX NUTS. DO NOT TIGHTEN.

**STEP 7.** INSTALL LOCK AND FLAT WASHERS ON (2) 3/8" X 1 1/4" HEX BOLTS, AND INSERT THE BOLTS THROUGH THE HOLES IN THE CENTER AND SIDE PLATES WITH THE **THREADS EXTENDING OUTWARD**.

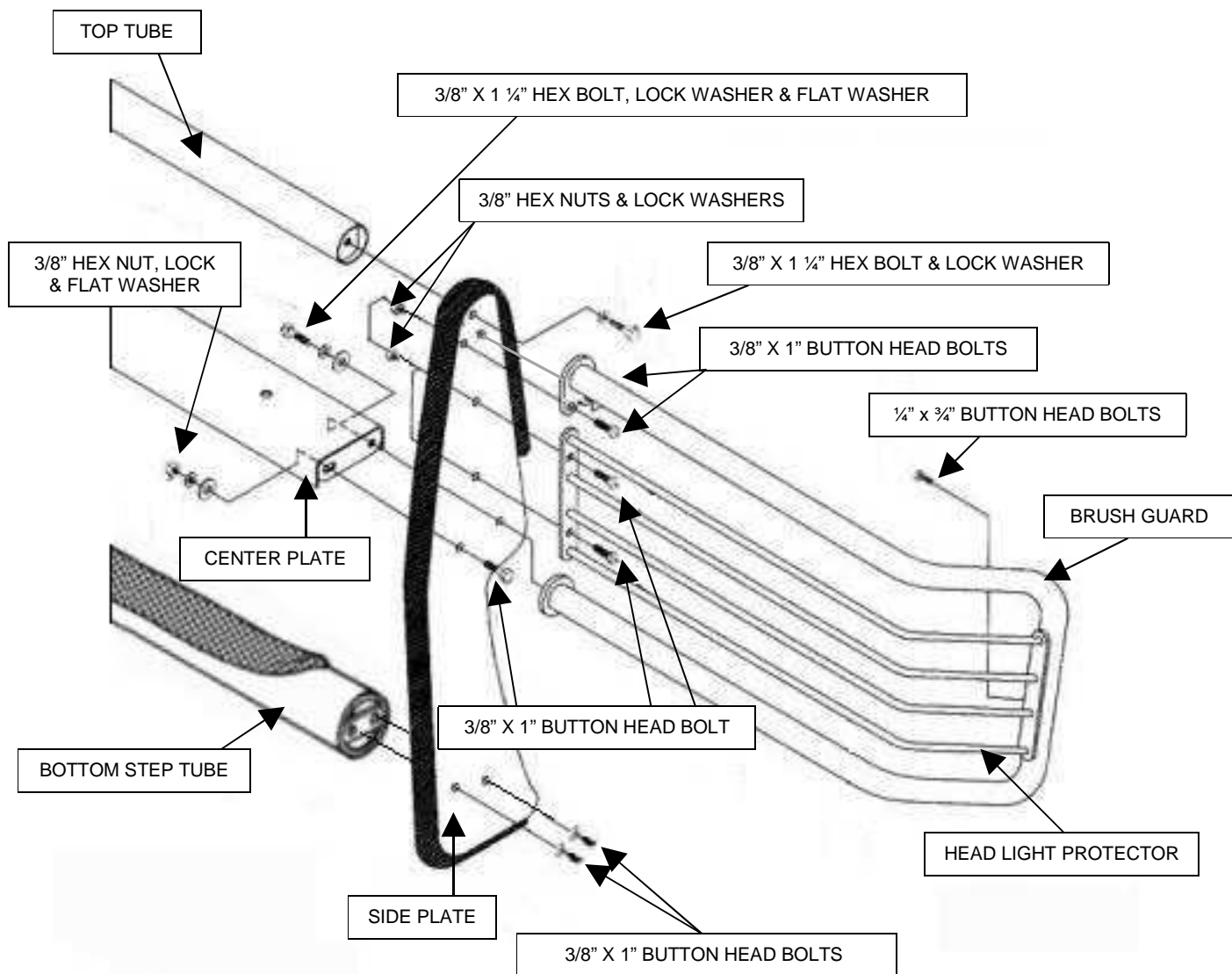
**STEP 8.** TIGHTEN THE TOP TUBE.

**STEP 9.** ATTACH THE BOTTOM OF THE DRIVER SIDE BRUSH GUARD TO THE SIDE PLATE USING THE 3/8" X 1 1/4" HEX BOLT INSTALLED IN STEP #7, AND THE TOP OF THE BRUSH GUARD TO THE SIDE PLATE USING (2) 3/8" X 1" BUTTON HEAD BOLTS, LOCK WASHERS AND HEX NUTS.

**STEP 10.** ATTACH THE DRIVER SIDE HEAD LIGHT PROTECTOR TO THE BRUSH GUARD USING (2) 1/4" X 3/4" BUTTON HEAD BOLTS, AND TO THE SIDE PLATE USING 2) 3/8" X 1" BUTTON HEAD BOLTS, LOCK WASHERS AND HEX NUTS.

REPEAT THE ABOVE STEP TO INSTALL THE PASSENGERS SIDE BRUSH GUARD AND HEAD LIGHT PROTECTOR

**STEP 11.** ALIGN THE GRILLE AND BRUSH GUARD ASSEMBLY, AND TIGHTEN ALL NUTS AND BOLTS.





## **3000 SERIES STEPGUARD**

COMPLETE GRILLE & BRUSH GUARD

INSTALLATION INSTRUCTIONS

PART NO. 3324MB & 3324MC 08-09 FORD E-SERIES 2/4WD

**Do not attempt to install this product on any vehicle other than the one it is designed for and listed above!**

### **PACKING LIST**

<b><u>QTY</u></b>	<b><u>PART DESCRIPTION</u></b>	<b><u>QTY</u></b>	<b><u>PART DESCRIPTION</u></b>
2	¼" X ¾" HEX BOLTS	4	½" X 1 ½" HEX BOLTS
2	¼" FLAT WASHERS	4	½" FLAT WASHERS
2	¼" NYLON LOCK NUTS	4	½" LOCK WASHERS
4	8M-1.25 X 30M HEX BOLTS	4	½" HEX NUTS
4	5/16" LOCK WASHERS	1	32411 DRIVER LOWER BRACKET
4	5/16" FLAT WASHERS	1	32412 PASSENGER LOWER BRACKET
4	3/8" X 1 ¼" HEX BOLTS	1	32431 DRIVER AUXILIARY BRACKET
4	3/8" FLAT WASHERS	1	32432 PASSENGER AUXILIARY BRACKET
4	3/8" LOCK WASHERS	1	32421 DRIVER UPPER BRACKET
4	3/8" HEX NUTS	1	32422 PASSENGER UPPER BRACKET
		1	32442 LICENSE PLATE BRACKET

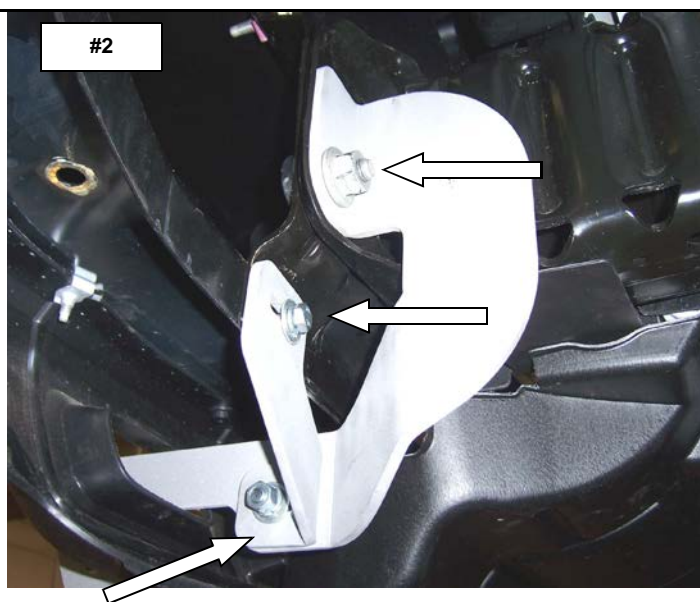
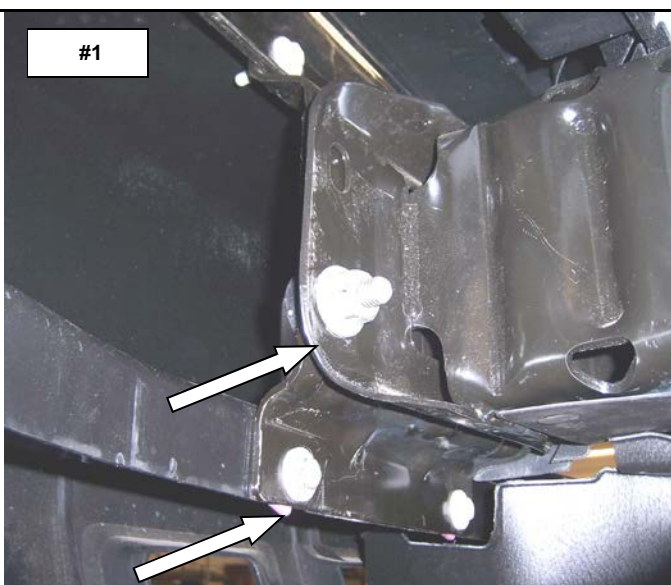
### **INSTALLATION INSTRUCTIONS**

**READ THE ASSEMBLY AND INSTALLATION INSTRUCTIONS COMPLETELY BEFORE YOU BEGIN.**

**REMOVE THE LICENSE PLATE AND PLASTIC MOUNTING BRACKET FROM THE FRONT BUMPER.**

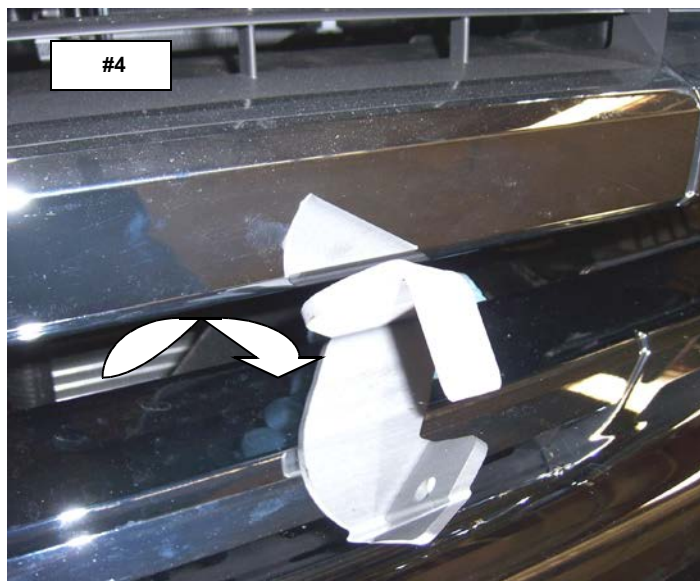
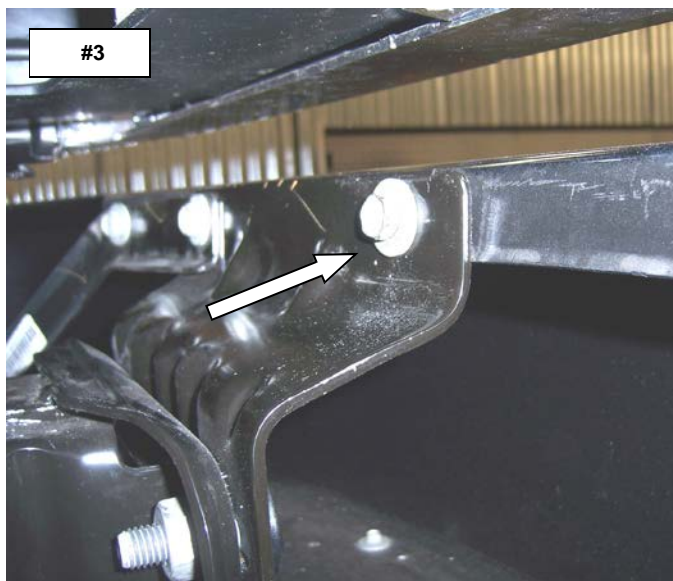
**STEP 1.** BEGINNING WITH THE DRIVER SIDE, LOCATE AND REMOVE THE LOWER BUMPER BOLT AND THE HEX NUT SECURING THE BUMPER BRACKET TO THE FRAME RAIL. **PHOTO #1**

**STEP 2.** POSITION THE DRIVER SIDE LOWER BRACKET OVER THE BUMPER BRACKET BOLT AND RE-INSTALL THE FACTORY NUT. DO NOT TIGHTEN. ATTACH THE DRIVER SIDE AUXILIARY BRACKET TO THE BUMPER BRACKET USING (1) 8M HEX BOLT, 5/16" LOCK WASHER AND FLAT WASHER, AND TO THE LOWER BRACKET USING (1) 3/8" X 1 ¼" HEX BOLT, FLAT WASHERS LOCK WASHER AND HEX NUT. DO NOT TIGHTEN. **PHOTO #2**



**STEP 3.** LOCATE AND REMOVE THE UPPER BUMPER BOLT. **PHOTO #3**

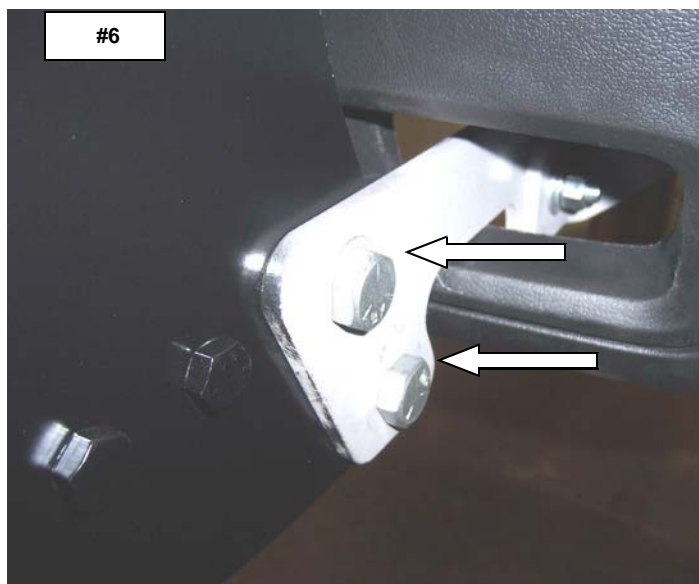
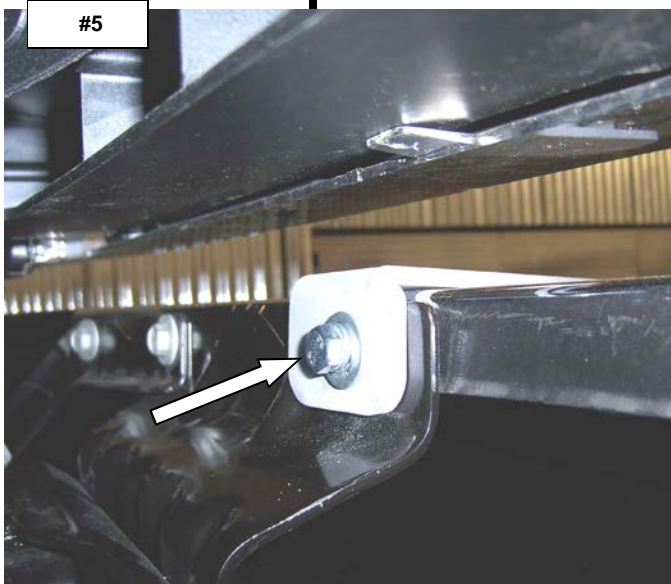
**STEP 4.** FROM BEHIND THE BUMPER, INSERT THE UPPER BRACKET THROUGH THE OPENING BETWEEN THE GRILLE AND BUMPER. **PHOTO #4**



**STEP 5.** ATTACH THE UPPER BRACKET TO THE BUMPER BRACKET USING (1) 8M HEX BOLT, LOCK WASHER AND FLAT WASHER. DO NOT TIGHTEN **FIG #5**

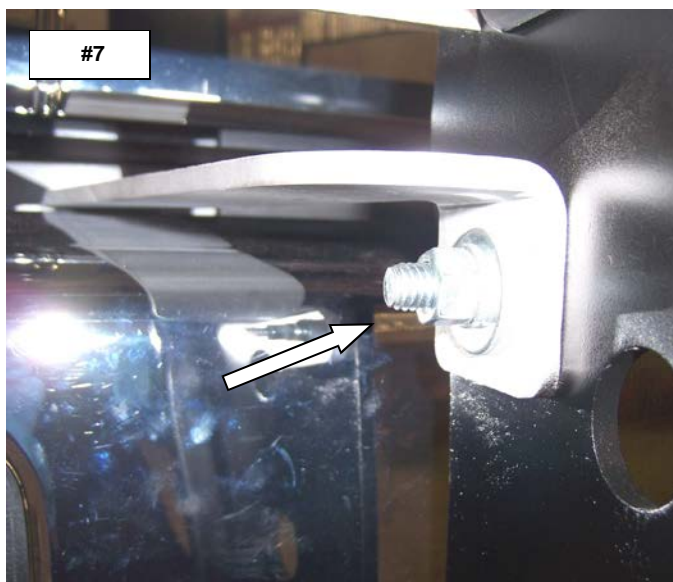
**REPEAT THE ABOVE PROCEDURE TO INSTALL THE PASSENGER SIDE BRACKETS.**

**STEP 6.** ATTACH THE GRILLE GUARD ASSEMBLY TO THE LOWER BRACKETS USING (4) 1/2" X 1 1/2" HEX BOLTS, FLAT WASHERS, LOCK WASHERS AND HEX NUTS. DO NOT TIGHTEN. **PHOTO #6**

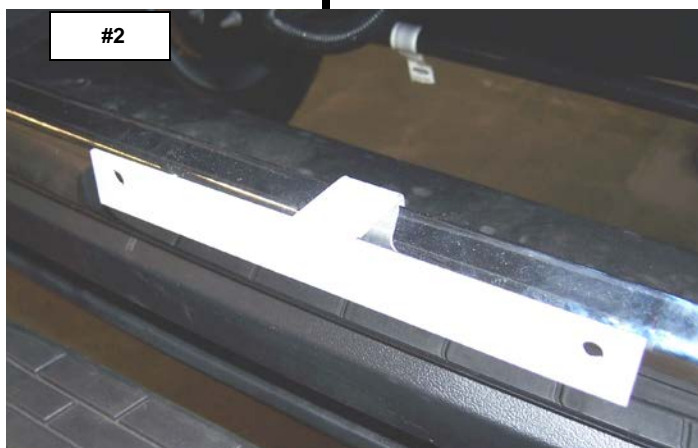
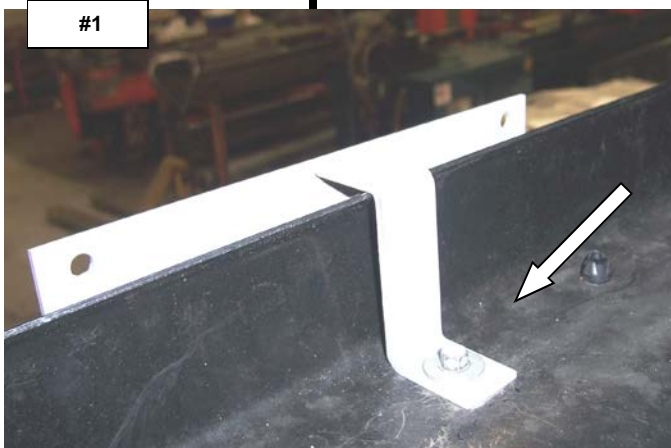


**STEP 7.** ATTACH THE GRILLE GUARD ASSEMBLY TO THE UPPER BRACKETS USING (2) 3/8" X 1 1/4" HEX BOLTS, FLAT WASHERS, LOCK WASHERS AND HEX NUTS. **PHOTO #7**

**STEP 8.** ALIGN THE GRILLE GUARD ASSEMBLY WITH THE FRONT OF THE VEHICLE AND TIGHTEN ALL NUTS AND BOLTS. **PHOTO #8**



IF YOU'RE STATE LAW REQUIRES A FRONT LICENSE PLATE, LOCATE AND REMOVE THE VALANCE BOLT AND ATTACH THE SUPPLIED LICENSE PLATE BRACKET TO THE INSIDE OF THE BUMPER USING THE FACTORY BOLT. **PHOTO #1 & 2**



ATTACH THE BOTTOM OF THE LICENSE PLATE TO THE BRACKET USING (2) 1/4" X 3/4" HEX BOLTS, FLAT WASHERS AND LOCK NUTS. **PHOTO #3**

