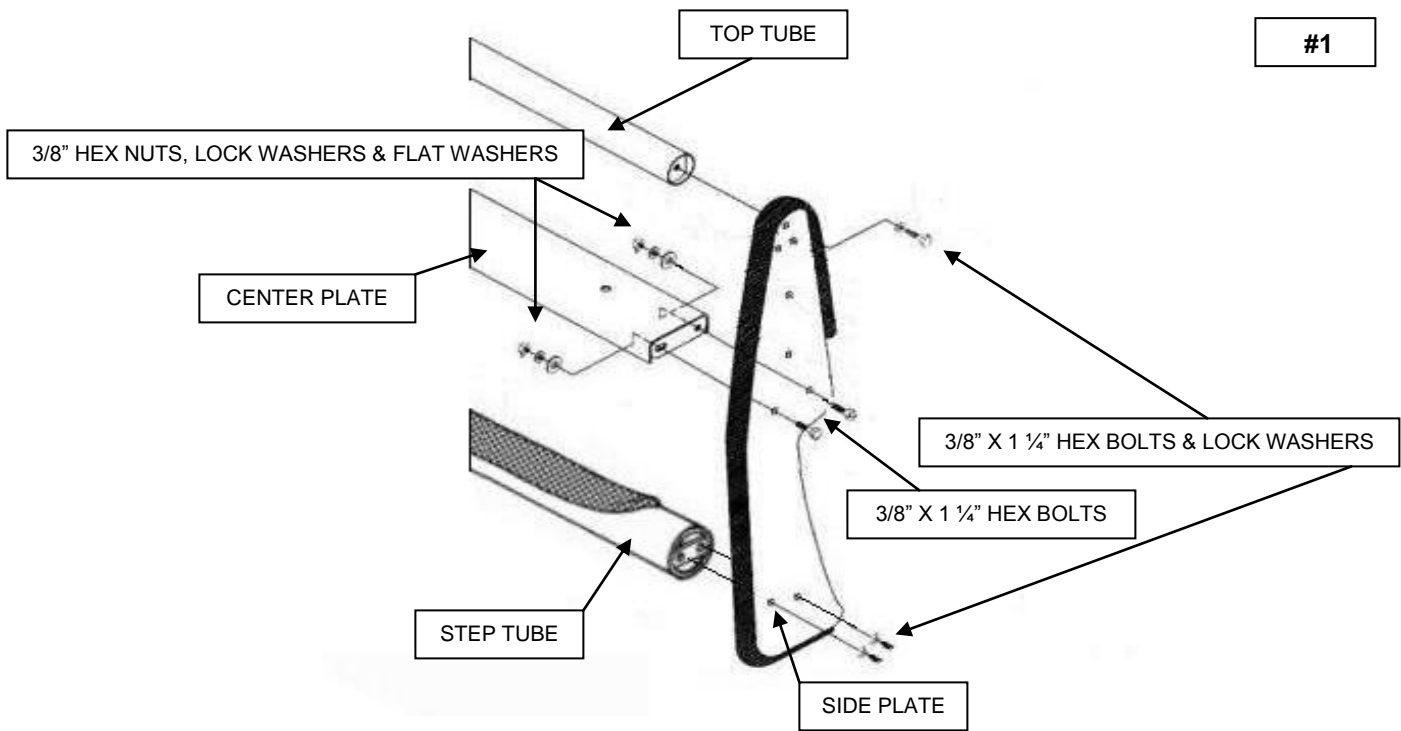
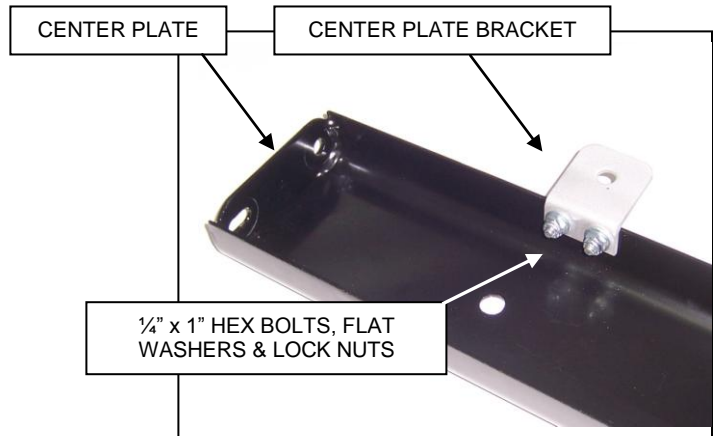




Installation Instructions (assembly)
3000 Series StepGuard (Grille Guard) Part Number 3219B, 3219C
2010-2016 Dodge Ram 2500 HD & 3500HD 2/4WD
 (Not compatible with ParkSense® Front Park Assist)

<u>QTY</u>	<u>PART DESCRIPTION</u>
4	1/4" X 1" HEX BOLT
4	1/4" FLAT WASHER
4	1/4" LOCK NUT
10	3/8" X 1 1/4" HEX BOLT
10	3/8" LOCK WASHER
4	3/8" HEX NUT
4	3/8" FLAT WASHER
2	3219 SIDE PLATE
1	ST3934) 3" X 39 3/4" BOTTOM STEP TUBE
1	CP3219) 39 3/4" CENTER PLATE
1	TT3934) 2" X 39 3/4" TOP TUBE
2	21930) CENTER PLATE BRACKET



ASSEMBLY

READ THE ASSEMBLY AND INSTALLATION INSTRUCTIONS COMPLETELY BEFORE YOU BEGIN.

STEP-1 BEGIN THE ASSEMBLY BY LAYING THE COMPONENTS OUT ON A PROTECTIVE SURFACE.

STEP-2 ATTACH THE (2) CENTER PLATE BRACKETS TO THE CENTER PLATE USING (4) 1/4" X 1" HEX BOLTS, (4) 1/4" FLAT WASHERS, AND (4) 1/4" LOCK NUTS. **PHOTO #1**

STEP-3 POSITION THE GRILLE GUARD SIDE PLATES WITH THE FRONT EDGE DOWN AND THE TOP TUBE, CENTER PLATE AND BOTTOM STEP TUBE BETWEEN THE SIDE PLATES.

STEP-4 ATTACH THE TOP TUBE TO THE SIDE PLATES USING (2) 3/8" X 1 1/4" HEX BOLTS AND (2) 3/8" LOCK WASHERS. ATTACH THE CENTER PLATE USING (4) 3/8" X 1 1/4" HEX BOLTS, (4) 3/8" FLAT WASHERS, (4) 3/8" LOCK WASHERS AND (4) 3/8" HEX NUTS AND THE BOTTOM STEP TUBE USING (4) 3/8" X 1 1/4" HEX BOLTS AND (4) 3/8" LOCK WASHERS. ALIGN THE GRILLE GUARD ASSEMBLY AND TIGHTEN ALL NUTS AND BOLTS.



Installation Instructions
3000 Series StepGuard (Grille Guard) Part Number 3219B, 3219C
2010-2016 Dodge Ram 2500 HD & 3500HD 2/4WD

PARTS LIST

<u>QTY</u>	<u>PART DESCRIPTION</u>	<u>QTY</u>	<u>PART DESCRIPTION</u>
4	3/8" X 1" HEX BOLT	4	1/2" X 1 1/4" HEX BOLT
4	3/8" X 1 1/4" HEX BOLT	4	1/2" FLAT WASHER
4	3/8" X 2" HEX BOLT	4	1/2" LOCK NUT
8	3/8" LOCK WASHER	2	21920) UPPER BRACKET
12	3/8" FLAT WASHER	1	21901) DRIVER SIDE MAIN BRACKET
4	3/8" HEX NUT	1	21902) PASSENGER SIDE MAIN BRACKET

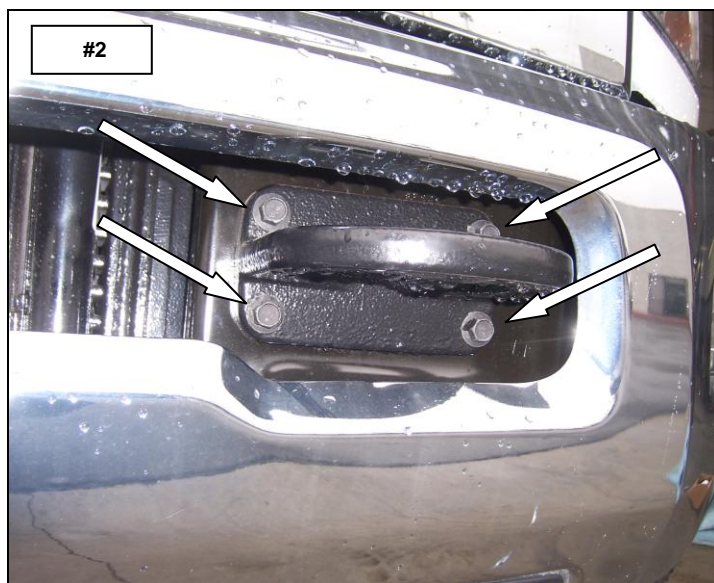
INSTALLATION

READ THE ASSEMBLY AND INSTALLATION INSTRUCTIONS COMPLETELY BEFORE YOU BEGIN.

NOTE: THIS INSTALLATION REQUIRES REMOVAL OF THE PLASTIC BUMPER GRILLE ON 5.7-LITER GAS ENGINE MODELS. FOR MODELS WITH OUT THE FACTORY TOW HOOK PACKAGE, ATTACH THE DRIVER AND PASSENGER SIDE MAIN BRACKETS TO THE VEHICLE USING THE 3/8" X 1 1/4" HEX BOLTS, 3/8" FLAT WASHERS, 3/8" LOCK WASHERS AND 3/8" HEX NUTS SUPPLIED.

STEP-1 BEGINNING WITH THE DRIVER SIDE, LOCATE AND REMOVE THE (4) BOLTS AND NUTS SECURING THE TOW HOOK TO THE VEHICLE. **PHOTO #2**

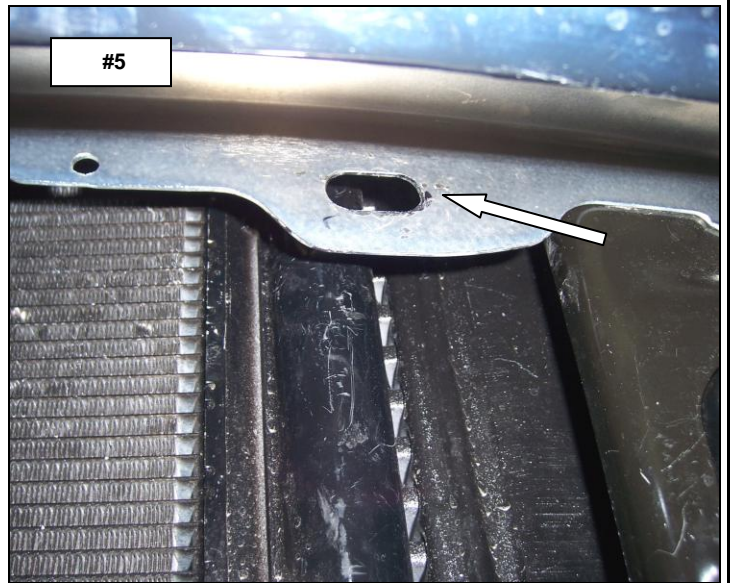
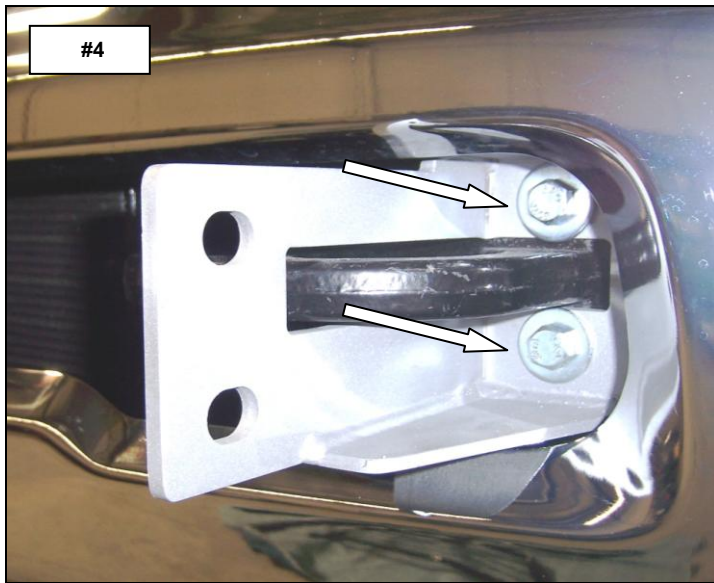
STEP-2 POSITION THE DRIVER SIDE MAIN BRACKET OVER THE TOW HOOK. **PHOTO #3**



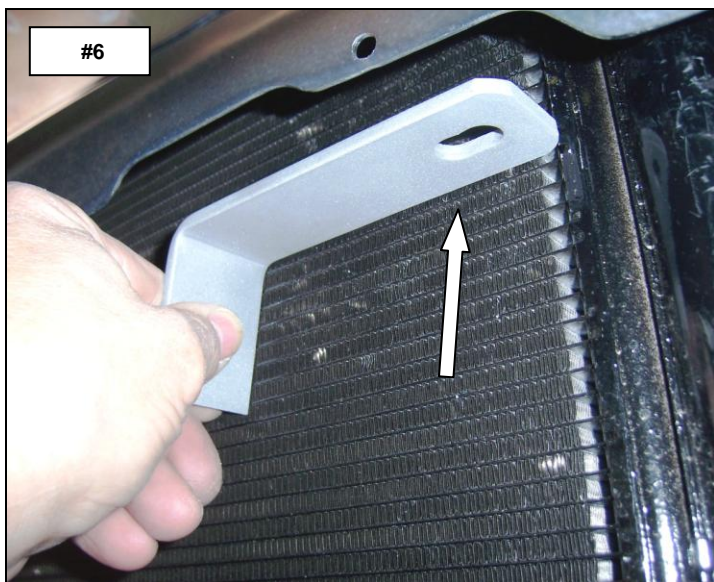
STEP-3 ATTACH THE TOW HOOK AND THE DRIVER SIDE MAIN BRACKET TO THE VEHICLE USING (2) 3/8" X 2" HEX BOLTS, (4) 3/8" FLAT WASHERS (2) 3/8" LOCK WASHERS AND (2) 3/8" HEX NUTS. **PHOTO #4**

RE-ATTACH THE LEFT SIDE OF THE TOW HOOK TO THE VEHICLE USING (2) OF THE FACTORY TOW HOOK BOLTS AND NUTS. DO NOT TIGHTEN.

STEP-4 LOCATE THROUGH THE OPENING IN THE BUMPER, THE OBOURD HOLE IN THE BUMPER FLANGE. **PHOTO #5**



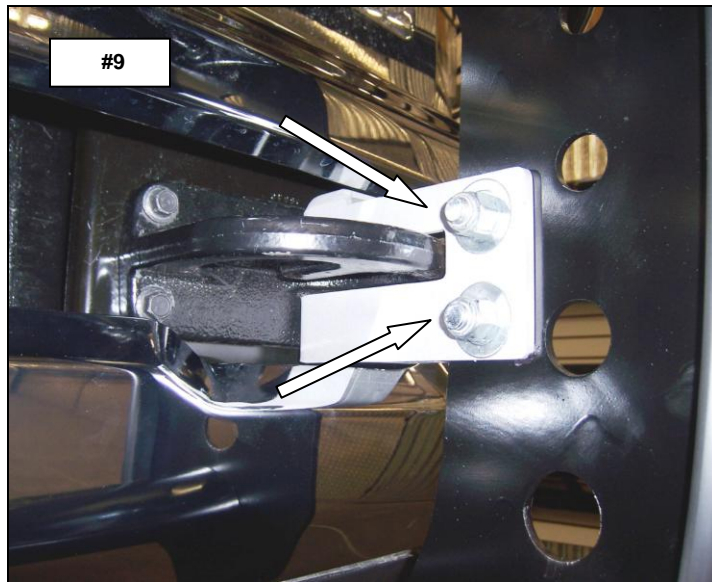
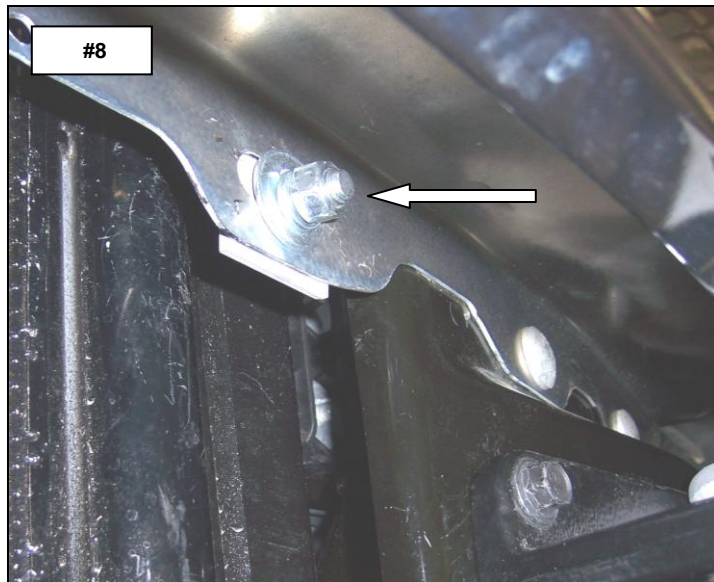
STEP-5 POSITION ONE OF THE UPPER BRACKETS THROUGH THE OPENING AND BEHIND THE BUMPER, SO THE LONGER LEG OF THE BRACKET EXTENDS OUT BETWEEN THE TOP OF THE BUMPER AND THE BOTTOM OF THE GRILLE. **PHOTOS #6 & #7**



STEP-6 ATTACH THE UPPER BRACKET TO THE BUMPER FLANGE USING (1) 3/8" X 1" HEX BOLT, (1) 3/8" FLAT WASHER, (1) 3/8" LOCK WASHER AND (1) 3/8" HEX NUT. DO NOT TIGHTEN. **PHOTO #8**

REPEAT THE ABOVE PROCEDURE TO INSTALL THE MAIN AND UPPER BRACKET ON THE PASSENGER SIDE.

STEP-7 ATTACH THE GRILLE AND BRUSH GUARD ASSEMBLY TO THE MAIN BRACKETS USING (4) 1/2" X 1 1/4" HEX BOLTS, (4) 1/2" FLAT WASHERS AND (4) 1/2" LOCK NUTS. DO NOT TIGHTEN. **PHOTO #9**



STEP-8 ATTACH THE CENTER PLATE BRACKETS TO THE UPPER BRACKETS USING (2) 3/8" X 1" HEX BOLTS, (2) FLAT WASHERS, (2) LOCK WASHERS AND (2) HEX NUTS. **PHOTO #10**

STEP-9 ALIGN THE GRILLE GUARD ASSEMBLY WITH THE FRONT OF THE VEHICLE AND TIGHTEN ALL NUTS AND BOLTS. **PHOTO #11**

