

Shield Removal and Installation

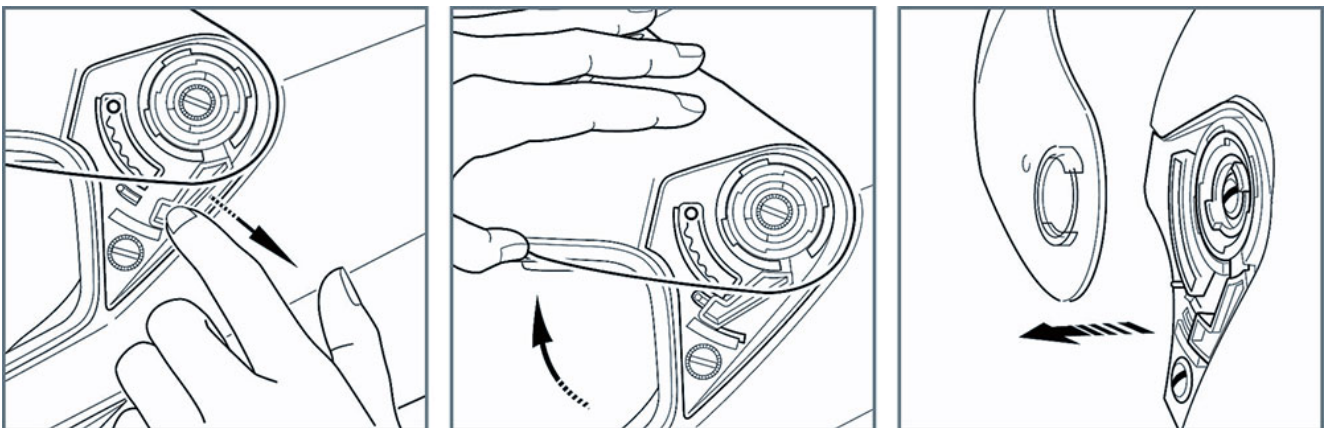
Models

- GM49Y
- FF49
- FF88
- GM64
- GM54
- OF77
- GM67

Outer Shield lens Removal

1. Raise the outer shield into the fully raised position.
2. Locate the side ratchet plates that secure the shield to the helmet.
3. Push down on the pin that locks the ratchet plate retaining arm into the secure position.
4. As you push down on the pin, move the retaining arm on the ratchet plate on the open position. The shield will release from the ratchet plate when the retaining arm is in the open position.

To install the outer shield: reverse the removal process.



Models

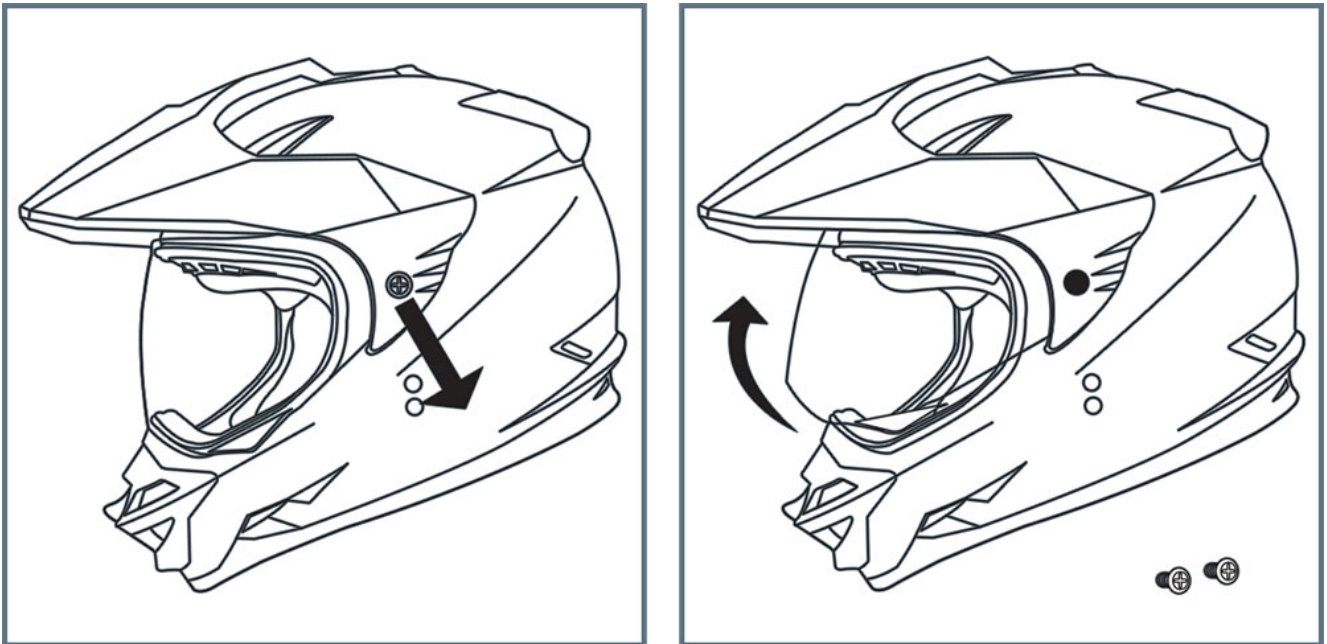
- GM11

Outer Shield lens Removal

1. Remove the two side screws that secure the visor to the helmet.
2. Rotate the lever to release and remove the shield.
3. With the shield in the fully closed position, reinstall the visor and screws.

To install the outer shield: reverse the removal process.

Note: Use the same visor screws to secure the shield side plate covers, that are supplied with helmet, when using the less-visor configuration.



Models

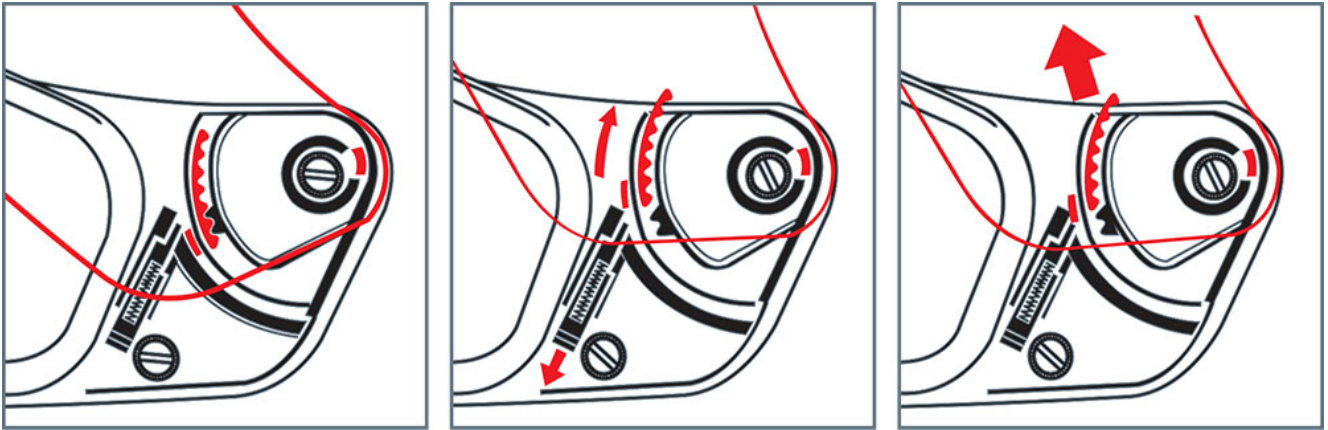
- GM44
- MD04
- GM38
- GM69
- GM17

Outer Shield LENS Removal

(Do ONE side at a time)

1. Lift the shield until one position from the fully open position.
2. Pull down the black RELEASE BAR while at the same time lifting the shield higher until it releases from the inner ratchet plate.
3. Shield will release from ratchet plate once tab has cleared the RELEASE BAR. Repeat the process on the other side to completely remove shield from ratchet plate.

To install the outer shield: reverse the removal process.



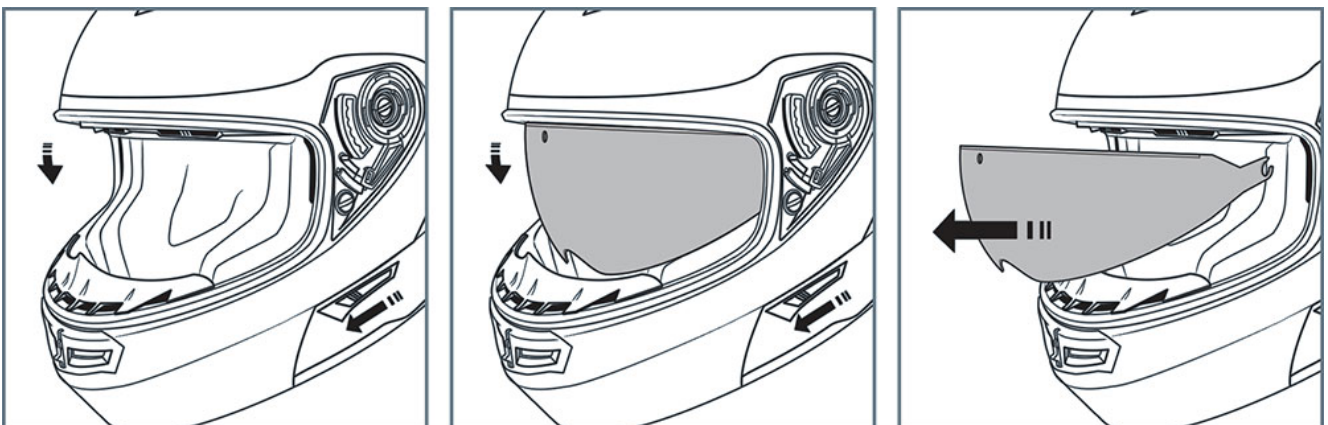
Models

- GM64

Inner Shield lens Removal

1. Lower the inner shield by pushing the slider button located on the left hand side of the helmet completely forward.
2. With the inner shield in the down position, grasp and pull straight out from the helmets eye port on each side of the inner shield to remove. You will feel the inner shield unsnap from the helmet. Note: The sides of the inner shield are simply snapped into place. No tools are needed to remove or install the inner shield.

To install the outer shield: reverse the removal process.



Models

- OF77

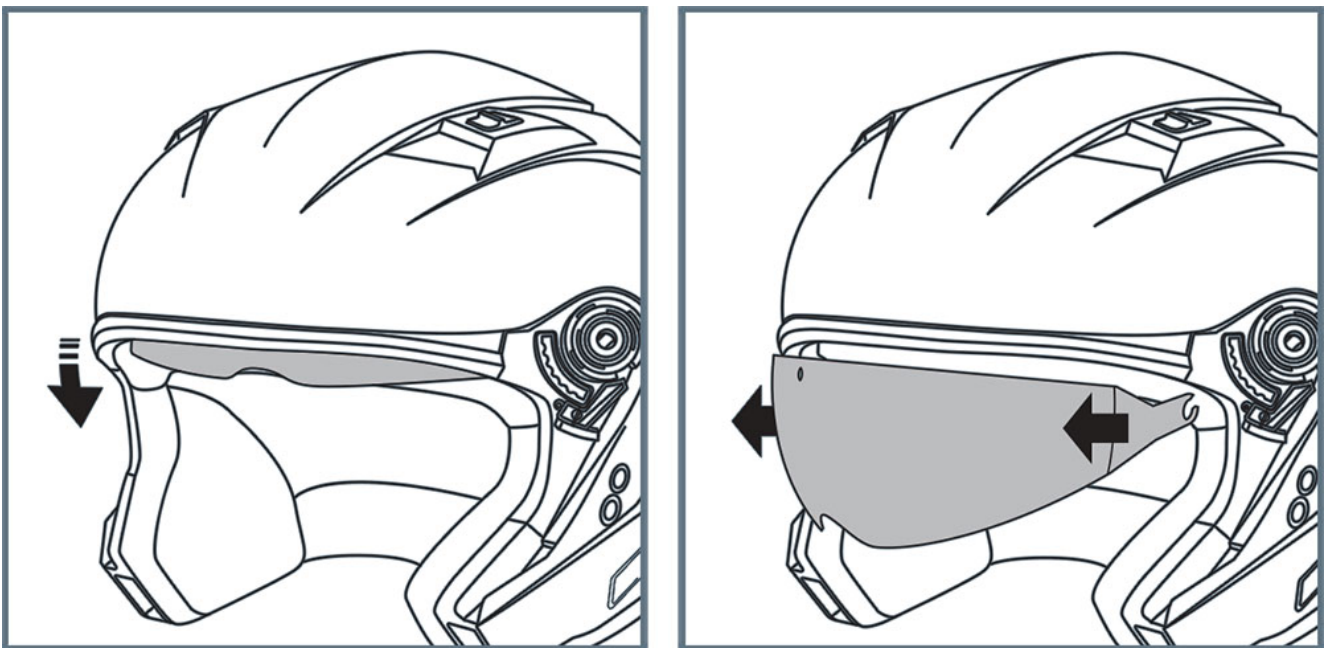
Inner Shield lens Removal

(Do ONE side at a time)

1. Lower the inner shield lens by pushing the slider (located at the left side of helmet) forward into the fully open position.
2. As the inner shield lens into the fully open position, pull the inner shield lens out straight from the helmet eye port (next to the inner shield lens) first. Remove the left side of the inner shield lens first.

To install the outer shield: reverse the removal process.

Note: The sides of inner shield lens simply snap lens into place, no tools are needed to remove or install.



Models

- GM54
- GM67
- GM78

Inner Shield lens Removal

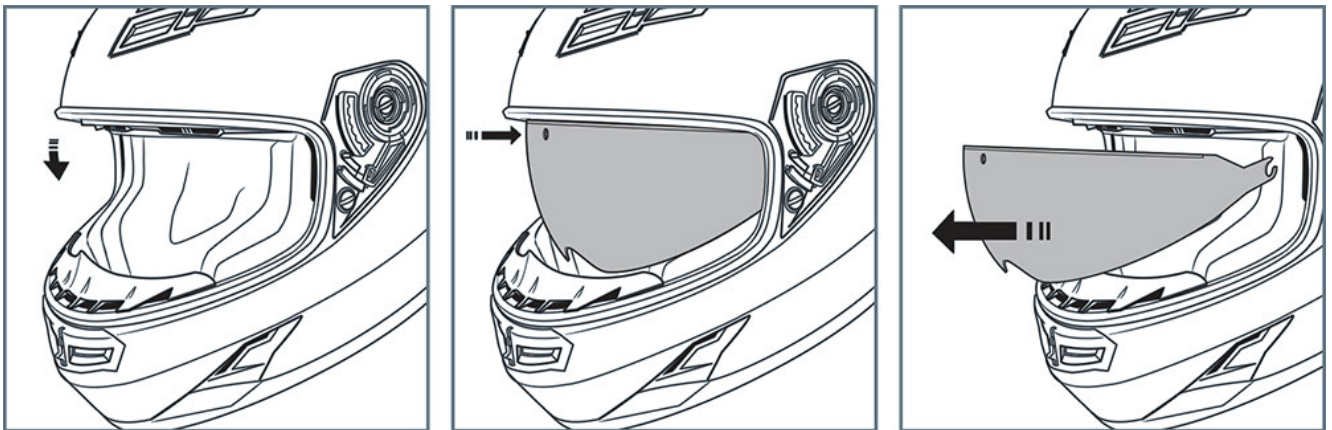
1. Lower the inner shield by pushing the slider button located on the top of the helmet

completely forward into the “service position”.

2. The service position is achieved by pushing on the rearward part of the slider button and sliding it forward over and past the molded in channel that it rides in.
3. When in the service position, the attachment arm that connect to the inner shield will be visible.
4. Take a small, thin, round tool, and push on the attachment arm pin to disengage the arm from the inner shield.
5. When the center attachment arm is free from the inner shield, grasp and pull straight out from the helmets eye port on each side of the inner shield to remove.

To install the outer shield: reverse the removal process.

Note: The sides of the inner shield are simply snapped into place. No tools are needed to remove or install.



Models

- GM32

Inner Sun Shield Removal

Removal

1. Turn the button to let the shield on open position.
2. Pull the inner sun shield out to remove the shield.

Installation

1. Make sure the side button is in the open position, and put the inner sun shield into the groove and push the inner sun shield until hear the click.
2. Try to open / close the inner sun shield and make sure it is installed correct.

