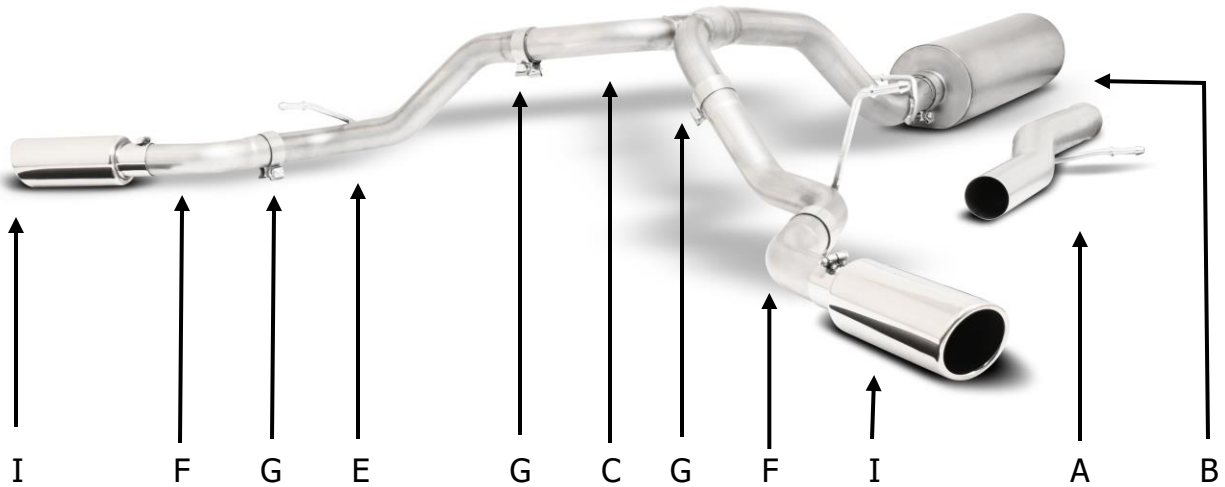




INSTALLATION INSTRUCTIONS

Dual Extreme Exhaust System
 GMC Yukon / Tahoe 5.3L 2WD/4WD
 "Non Factory Dual Exhaust"
 PART # 65683

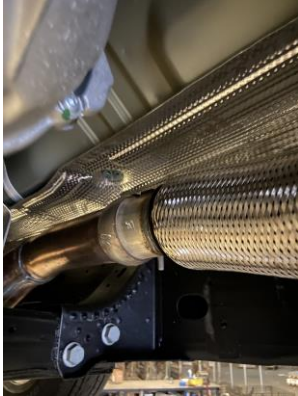


Item	Part Number	Quantity	Description
A	999701090S	1	3" Head Pipe
B	420887-V	1	SFT Muffler
C	999701094S	1	3.0" Over Axle Y- pipe
D	999701094S-B	1	2.50" Passenger side Extension pipe w hanger
E	999701094S-C	1	2.50" Driver side Extension pipe w hanger
F	571-700448S-V	2	2.5" Stainless Exit pipe Notched
G	5762	4	2.5" band clamp
H	5763	2	3.0" band clamp
I	500640	2	Rolled Round Angle Cut Tip
J	BO-906	1	Hanger Bolt Kit
K	800015	1	Driver side Tailpipe Hanger

CAREFULLY READ INSTRUCTIONS BEFORE INSTALLING PRODUCT

When installing this exhaust system make sure to use proper safety precautions. Therefore, make sure instructions are thoroughly read and understood before attempting to install. Use jack stands when working under the vehicle, set parking brake, block tires and use safety glasses and gloves. Allow exhaust system to cool before attempting installation. Severe injury or burns could occur if safety measures are not taken.

SUGGESTED TOOLS: Sawzall or hack-saw, 1/2", 9/16" socket or wrench, 15mm deep socket or wrench. Hanger removal tool or large channel-lock pliers, WD-40 and Jack Stands.



TO REMOVE YOUR STOCK EXHAUST, Un Bolt the back half from the flange LOCATED above the rear suspension, then loosen the front clamp and remove the remaining exhaust. Your Spare Tire & Heat Shield will need to be removed for installation. (FACTORY RUBBER HANGER GROMMETS WILL BE RE-USED, USE WD-40 TO AID IN REMOVAL.)



Install metal hangers #K using Bolt Kit #J. We will Re-use the middle support hanger grommet from the stock exhaust for this bracket.



Install head pipe #A onto you're existing stock Pipe use your factory Band Clamp. Insert welded hanger into rubber grommet. Do not tighten.



Install the Over Axle Assy. #C into the muffler at least 1-1/2" to 2". #C needs to be installed from the back of the car where the Spare Tire Sits. Use clamp #H to secure pipe to the muffler. Do not tighten. Insert hangers into rubber grommet.



Install muffer onto head pipe #A 1-1/2" to 2" with the louvers facing towards the converter. Use a jack stand to support the muffer. Use clamp #H to the secure the muffer to the head pipe. Do not tighten



Install the Over Axle (B) #D onto the PS output of the First Over Axle Pipe then install Over Axle (C). Use clamps #G to secure pipe. Do not tighten. Next, Install the Exit Pipes #E with the tips pre-installed to set height, then tighten using clamps #G.

Re install spare tire and heat shield. Position all pipes and double check all connections prior to tightening clamps.



Finally, go back and tighten all clamps, nuts and bolts. Use stainless steel cleaner and a Scotch Brite pad weekly to prevent tip from discoloration. Inspect all fasteners after 25-50 miles of operation and re-tighten as necessary.

GIBSON EXHAUST systems are designed on a factory stock vehicle. Any aftermarket products installed could increase the sound levels of this Exhaust. Make sure there is a 1" clearance from ALL rubber brake lines, shock boots, fuel lines, tires, etc to prevent heat related damage or fire.

Discover other performance exhaust systems on our website.