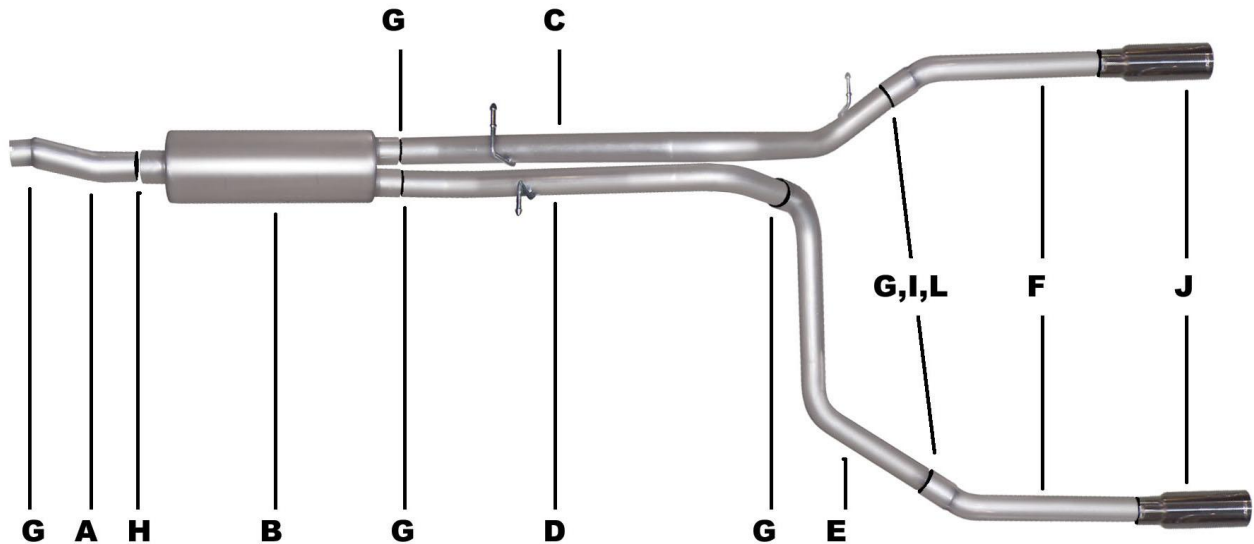




INSTRUCTION MANUAL
CAT-BACK STAINLESS SPLIT REAR EXHAUST
FORD F150/F250 TRUCK 4.2L, 4.6L, 5.4L
STANDARD CAB LONG BED 2/4WD
SUPERCAB SHORT BED & LONG BED 2/4WD
4.6L, 5.4L SUPERCREW, SHORT BED 2/4WD
PART # 69504



ITEM	PART#	QUANTITY	DESCRIPTION
A	321-700176S	1	3" STAINLESS HEADPIPE
B	758219S	1	STAINLESS SUPERFLOW MUFFLER
C	770-700538S	1	2.5" STAINLESS PSGRSIDE OVERAXLE TAILPIPE
D	771-700539S	1	2.5" STAINLESS FRONT DRVR. TAILPIPE
E	772-700540S	1	2.5" STAINLESS DRVR. OVERAXLE TAILPIPE
F	253-500626S	2	2.5" STAINLESS EXIT PIPES
G	5757	7	2.5" CLAMPS
H	OHD300	1	3" CLAMP
I	08269	2	10" METAL HANGER
J	500374	2	3.5" STAINLESS TIPS
K	ZIP	2	ZIP TIES
L	BO-101	2	BOLT KIT FOR 10" HANGER

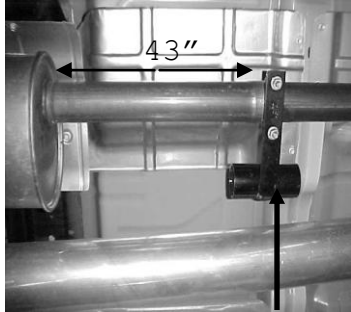
SPARE TIRE MUST BE REMOVED IF OVER 16".
4 W/D'S MUST REMOVE SPARE TIRE. WILL NOT FIT HEAVY DUTY TRUCK

EXHAUST INSTALLATION #69504

WHEN INSTALLING THIS EXHAUST SYSTEM MAKE SURE YOU USE ALL THE PROPER SAFTEY PRECAUTIONS. USE JACK STAND TO SUPPORT THE TRUCK WHILE OFF THE GROUND. SET PARKING BRAKE, BLOCK THE TIRES AND USE SAFTEY GLASSES AND GLOVES. DO NOT WORK WITH HOT PIPES!

SUGGESTED TOOLS:

HACKSAW, JACKSTAND, 1/2" WRENCH & SOCKET, 9/16" SOCKET & WRENCH, WD-40,
TO REMOVE STOCK EXHAUST, SEE BELOW FOR PROPER VEHICLE APPLICATION.

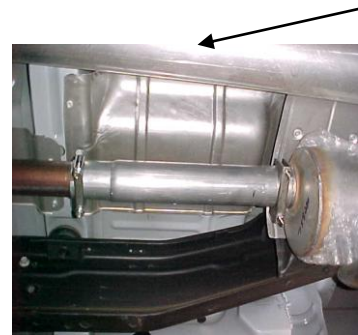


EXTENDED CAB- SHORT&LONG BED STANDARD CAB-LONG BED SUPERCREW – SHORT BED

MEASURE 43" FROM THE REAR OF THE MUFFLER FORWARD AND CUT. YOU WILL BE REMOVING THE STOCK ALIGNMENT PIN. CUT STOCK EXHAUST OFF AND USED WD-40 ON ALL HANGERS. LEAVE RUBBER GROMMETS IN PLACE.



INSTALL THE DRIVERSIDE FRONT TAILPIPE # D TO OUTLET OF MUFFLER NOT MORE THAN 1.5" TO 2". THE TAILPIPE INLET THAT GOES INTO THE MUFFLER IS 4.5" LONG. ATTACH WITH HANGER# G. INSTALL DRIVERSIDE OVERAXLE TAILPIPE # E TO FRONT DRIVERSIDE TAILPIPE, THIS PART HAS A SWEDGE UP ON IT. ATTACH USING CLAMP # G. INSTALL PASSENGER OVERAXLE TAILPIPE TO THE OUTLET OF THE MUFFLER NOT MORE THAN 1.5" TO 2". THE TAILPIPE INLET THAT GOES INTO THE MUFFLER IS 4.5" LONG AND ATTACH WITH CLAMP # G. DO NOT TIGHTEN.

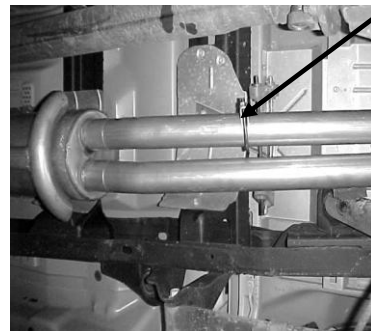


INSTALL NEW HEADPIPE #A AND ATTACH USING CLAMP #G TO FACTORY PIPE.

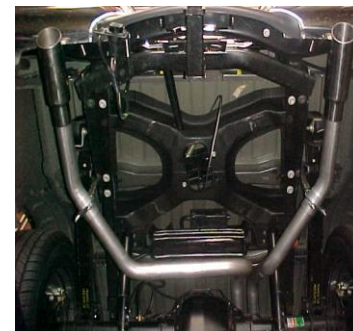


NEXT, ALL TRUCKS

INSTALL MUFFLER ONTO HEADPIPE AT LEAST 1.5" TO 2", AND ATTACH USING CLAMP #H.. USE A JACKSTAND TO SUPPORT THE MUFFLER. DO NOT TIGHTEN.



NEXT INSTALL HANGER # J TO DRIVERSIDE TAILPIPE AND INSERT WELDED HANGER INTO RUBBER GROMMET.MAKE SURE YOU HAVE EQUAL SPACE BETWEEN SHOCK AND SPARE TIRE. THE SPARE TIRE MAY NEED TO BE LOOSEND AND PUSH TO THE DRIVER SIDE AND THEN ROTATE THE OVERAXLE PIPE TO GAIN CLEARANCE.



INTSTALL EXIT PIPES # F TO THE OVERAXLE TAILPIPES USE CLAMP # G TO SECURE USE ZIP TIES FOR BRAKE AND HOSE LINES TO KEEP AWAY FROM PIPES. NOW FIRMLY TIGHTEN ALL BOLTS, CLAMPS AND HANGERS. INSTALL STAINLESS TIPS.