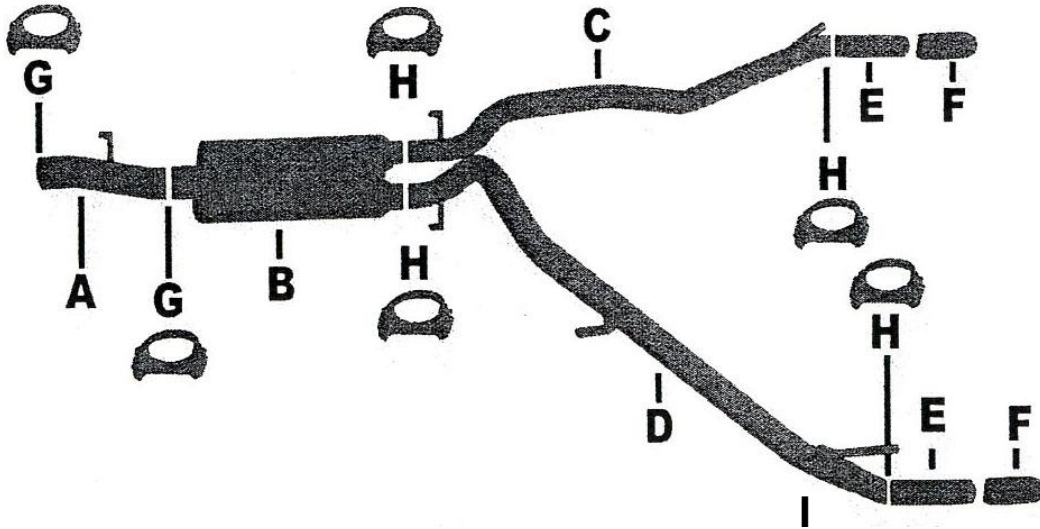




INSTALLATION INSTRUCTIONS
CAT-BACK STAINLESS SPLIT REAR EXHAUST
DODGE RAM 1500 TRUCK
4.7 - 5.7L 2WD CREWCAB, SHORT BED
PART #66565



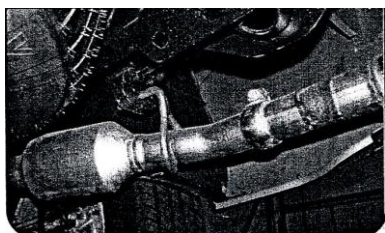
ITEM	PART #	QUANTITY	DESCRIPTION
A	1345-701079S	1	3" Stainless Head Pipe
B	11235S	1	Superflow Stainless CFT Muffler
C	1346-701080S	1	2 1/4" Stainless Pass. Side Tailpipe W/Hangers
D	1347-701081S	1	2 1/4" Stainless Driver Side Tailpipe W/Hangers
E	1231-700988S	2	2 1/4" Exit Pipe
F	500553	2	4" Stainless Tip
G	OHD300	2	3" Clamp
H	5756	4	2 1/4" Clamp
I	4240	1	Rubber Grommet

INSTALLATION INSTRUCTIONS # 66565

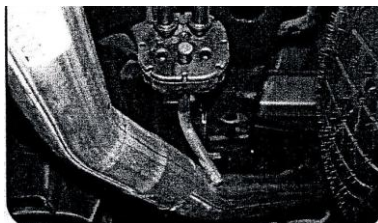
CAREFULLY READ INSTRUCTIONS BEFORE STARTING INSTALLATION.

When installing this exhaust system make sure to use proper safety precautions. Use jack stands when working under the vehicle, set parking brake, block tires and use safety glasses and gloves. Allow exhaust to cool before attempting installation. Severe injury or burns could occur if safety measures are not taken.

SUGGESTED TOOLS: 1/2", 9/16" 15mm wrenches & sockets, WD-40, hacksaw, jack stands.



1. Disconnect the negative battery cable before removal of OEM exhaust. This will allow the computer to reset and recognize the new exhaust. Lay out the exhaust on the floor so it looks like the drawing and compare parts with manual.



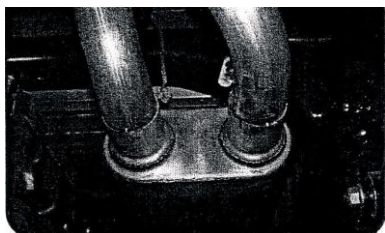
6. Install driver side rear hanger #H into hole located on cross member behind spare tire location (see photo). Use bolt kit #I to secure and attach rubber grommet # L. DO NOT TIGHTEN.



2. To remove the stock exhaust, remove it from the two bolt flange in front of the muffler. Do not discard you will re-use bolts. Disengage the welded hangers using WD-40 from the OEM rubber grommets. Do not damage or remove the rubber grommets as you will reuse them to mount your new system. Now, cut off tailpipe before and after rear axle for removal.

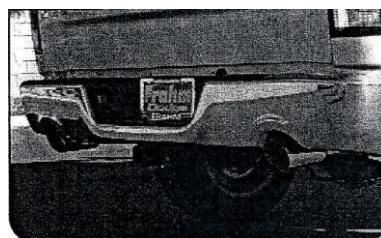


7. Install driver side tailpipe #C into the muffler 1½-2". Use clamp #G to secure tailpipe to muffler. DO NOT TIGHTEN. Insert welded hangers into rubber grommets.

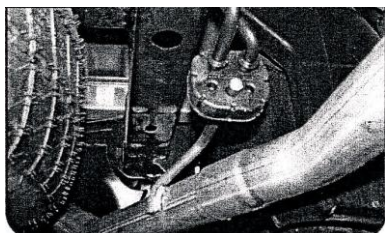


3. 2009 Models Only
Measure 8" from the flange on your new headpipe #A and cut. Attach adapter pipe to new headpipe with the 3" clamp. You will re-use the factory band clamp.

Bolt head pipe #A onto your existing stock front pipe re-using stock bolts. Insert welded hanger into rubber grommet. DO NOT TIGHTEN.



8. Install the exit pipes #E. Use clamp #G to secure exit pipes to tailpipes. DO NOT TIGHTEN. Rotate pipes to adjust for desired look. Re-install spare tire.



4. Install muffler #B onto head pipe #A 1½"-2". Use a jack stand to support the muffler. Muffler outlets will be positioned at the top. Use clamp #F to secure the muffler to the headpipe. DO NOT TIGHTEN.

5. Remove spare tire to install tailpipes. Now install passenger side tailpipe #D into the muffler 1½-2". Use clamp #G to secure tailpipe to muffler. DO NOT TIGHTEN. Insert welded hangers into rubber grommets.

9. Install stainless steel tips #J. Clamp down. When you have everything in place, firmly tighten all bolts and clamps down securely. Use stainless steel cleaner and a Scotch Brite pad weekly to prevent tip from discoloration. Inspect all fasteners after 25-50 miles of operation and re-tighten as necessary.

GIBSON EXHAUST systems are designed on a factory stock vehicle. Any aftermarket products installed could increase the sound levels of this Exhaust.