



PERFORMANCE EXHAUST SYSTEMS

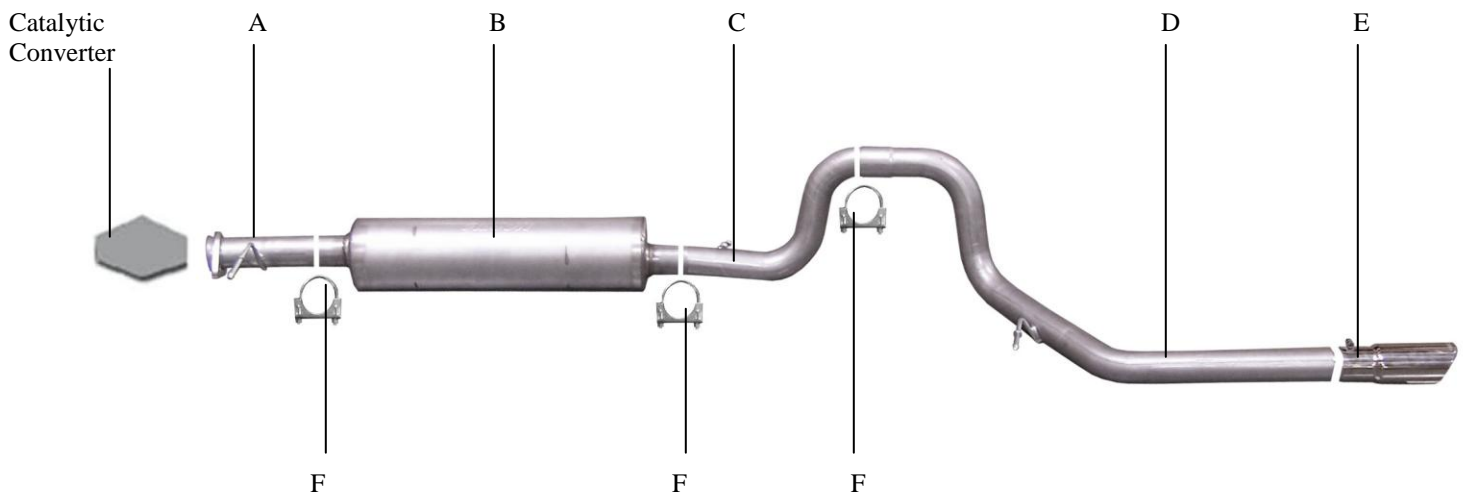
INSTRUCTION MANUAL

CAT-BACK STAINLESS SINGLE EXHAUST

LINCOLN AVIATOR

4.0L, 4.6L-V8, 4 DOOR, 2/4WD

PART# 619998



ITEM	PART#	QTY	DESCRIPTION
A	781-700533S	1	2.5" STAINLESS HEADPIPE W/ HANGER
B	788500S	1	SUPERFLOW STAINLESS MUFFLER
C	486-700353S	1	2.5" STAINLESS TAILPIPE
D	487-700354S	1	2.5" STAINLESS EXIT PIPE
E	500361	1	3 " STAINLESS STEEL TIP
F	5757	3	2.5" CLAMP

INSTALLATION INSTRUCTIONS # 619998

WHEN INSTALLING THIS EXHAUST SYSTEM, MAKE SURE TO USE PROPER SAFETY PRECAUTIONS. USE JACK STANDS WHEN UNDER THE VEHICLE, SET PARKING BRAKE, BLOCK TIRES AND USE SAFETY GLASSES AND GLOVES. **DO NOT WORK WITH HOT PIPES!**

THIS KIT GETS INSTALLED FROM THE BACK FORWARDS!

SUGGESTED TOOLS:

15MM SOCKET & WRENCH, 9/16", 1/2" SOCKET & WRENCH, JACK STAND, WD-40, HACKSAW

LAY OUT THE EXHAUST AND COMPARE PART NUMBERS WITH THE DRAWING.



TO REMOVE STOCK EXHAUST UNBOLT IT FROM THE SLIP-FIT JOINT LOCATED IN THE REAR ABOVE THE AXLE AND SLIDE THE TAILPIPE OUT. NEXT UNBOLT THE 2-BOLT FLANGE LOCATED JUST BEHIND THE CATALYTIC CONVERTER. **DO NOT THROW AWAY STOCK NUTS AND BOLTS YOU WILL NEED TO RE-USE THEM.**

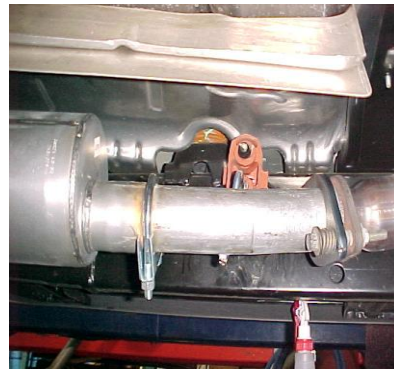
LEAVE ALL RUBBER GEOMETTS ON THE HANGERS. USE WD-40 TO AID IN THE REMOVAL OF EXHAUST AND HANGERS.



INSTALL HEADPIPE #A. SLIDE HEADPIPE INTO MUFFLER 1-1/2" TO 2" USE CLAMP # F TO SECURE HEADPIPE TO MUFFLER. DO NOT TIGHTEN. NEXT USE YOUR STOCK NUTS AND BOLTS TO SECURE HEADPIPE TO STOCK FLANGE.



INSTALL EXIT PIPE # D AND INSERT WELDED HANGER INTO RUBBER GROMMET.



INSTALL TAILPIPE # C. SLIDE IT INTO THE EXITPIPE # D, USE CLAMP # F TO SECURE THE TAILPIPE TOGETHER. DO NOT TIGHTEN.

INSTALL THE STAINLESS STEEL TIP. TO CLEAN TIP USE ANY ALUMINUM OR STAINLESS CLEANER AND A SCOTCH BRITE PAD. GO BACK AND TIGHTEN ALL NUTS, BOLTS AND CLAMPS STARTING IN THE FRONT AND WORKING BACK.



INSTALL MUFFLER # B ONTO TAILPIPE 1-1/2" TO 2" WITH INLET TOWARDS THE MOTOR. USE CLAMP # F TO SECURE THE TAILPIPE AND THE MUFFLER, DO NOT TIGHTEN. INSERT WELDED HANGER INTO RUBBER GROMMET ON THE TAILPIPE. MUFFLER INLET SHOULD BE AT 9 O'CLOCK POSITION.



"MAKE SURE YOU HAVE A 1" CLEARANCE ON ALL PIPES FROM BRAKE AND FUEL LINES, TIRES, SHOCKS, ETC..."